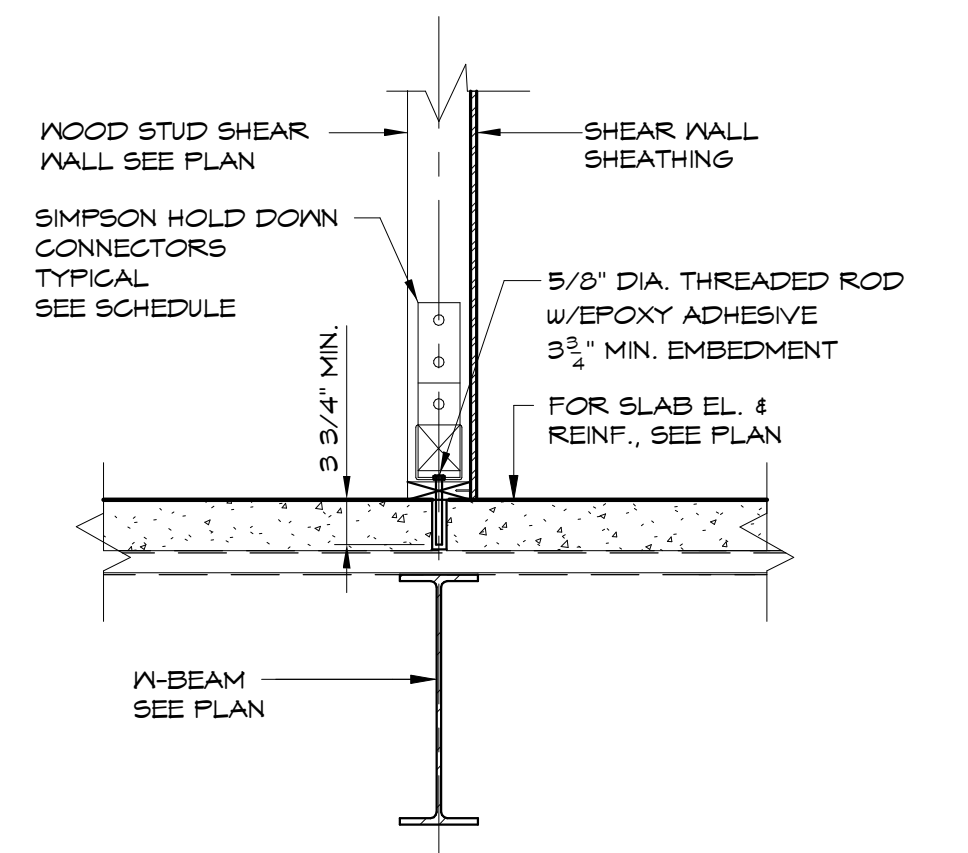
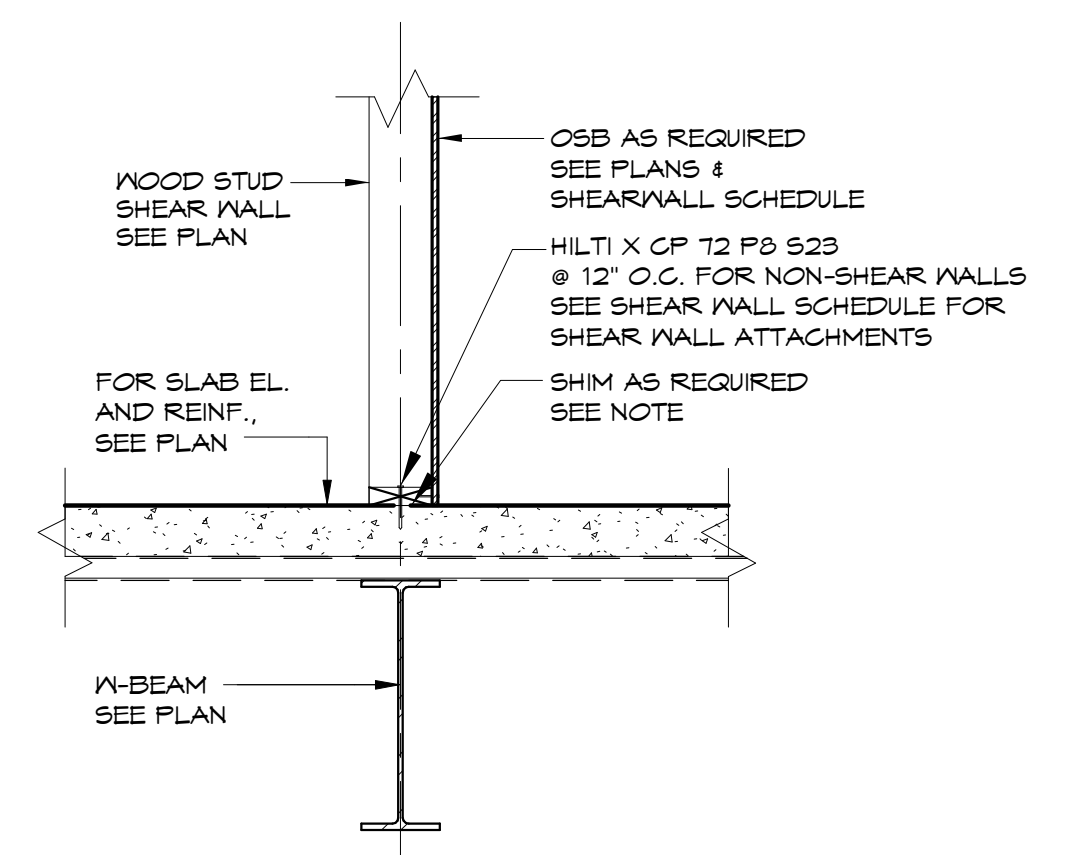


SHEAR WALL SCHEDULE

SW1 - 7/16" PLYWOOD (OSB) ONE SIDED																	
	OSB-SHEATHING NAILING & BLOCKING	GYPSUM INSIDE SHEATHING NAILING & BLOCKING	PLATE FASTENING & SHEAR BLOCKING	SHEAR WALL ANCHORAGE TYPE A		SHEAR WALL ANCHORAGE TYPE B		SHEAR WALL ANCHORAGE TYPE C		SHEAR WALL ANCHORAGE TYPE D		SHEAR WALL ANCHORAGE TYPE E		SHEAR WALL ANCHORAGE TYPE F		SHEAR WALL ANCHORAGE TYPE G	
				WALL CHORDS		WALL CHORDS		WALL CHORDS		WALL CHORDS		WALL CHORDS		WALL CHORDS		WALL CHORDS	
				HOLDDOWNS / FLOOR TIES	HOLDDOWNS / FLOOR TIES	HOLDDOWNS / FLOOR TIES	HOLDDOWNS / FLOOR TIES	HOLDDOWNS / FLOOR TIES	HOLDDOWNS / FLOOR TIES	HOLDDOWNS / FLOOR TIES	HOLDDOWNS / FLOOR TIES	HOLDDOWNS / FLOOR TIES	HOLDDOWNS / FLOOR TIES	HOLDDOWNS / FLOOR TIES	HOLDDOWNS / FLOOR TIES	HOLDDOWNS / FLOOR TIES	
ROOF	8d NAILS @ 4' o.c. 8d NAILS @ 6' o.c.	#6 x 1 1/4 TYPE "S" @ T.O.C. #6 x 1 1/4 TYPE "S" @ T.O.C.	6'-0" O.C. (AT ROOF)							3-2x	3-2x	2-2x	2-2x	2-2x	2-2x		
6TH FLOOR	BLOCKED	UNBLOCKED	4'-0" O.C.							2-C514	2-C514	C514	C514	C514	C514		
5TH FLOOR	8d NAILS @ 4' o.c. 8d NAILS @ 6' o.c.	#6 x 1 1/4 TYPE "S" @ T.O.C. #6 x 1 1/4 TYPE "S" @ T.O.C.	2'-0" O.C.											2-C514	2-C514	2-C516	2-C516
4TH FLOOR	8d NAILS @ 4' o.c. 8d NAILS @ 6' o.c.	#6 x 1 1/4 TYPE "S" @ T.O.C. #6 x 1 1/4 TYPE "S" @ T.O.C.	2'-0" O.C.											3-2x	3-2x	LAM 5 1/4x5 1/4	LAM 5 1/4x5 1/4
3RD FLOOR	8d NAILS @ 4' o.c. 8d NAILS @ 6' o.c.	#6 x 1 1/4 TYPE "S" @ T.O.C. #6 x 1 1/4 TYPE "S" @ T.O.C.	2'-0" O.C.											4-2x	4-2x	3-2x	3-2x
PODIUM	8d NAILS @ 3' o.c. 8d NAILS @ 6' o.c.	#6 x 1 1/4 TYPE "S" @ T.O.C. #6 x 1 1/4 TYPE "S" @ T.O.C.	AT EXTERIOR WALLS - SEE NOTE 4 AT INTERIOR WALLS HLT X-CP-12-F8-S23 @ 4' O.C.											4-2x	4-2x	5-2x	5-2x
	BLOCKED	UNBLOCKED												HD12 1 1/8" DIA. ROD	HD12 1 1/8" DIA. ROD	HHDQ11-SDS2.5 1" DIA. ROD	HHDQ11-SDS2.5 1" DIA. ROD



TYPICAL DETAIL OF STUD WALL EPOXY HOLD-DOWN AT SLAB ON DECK



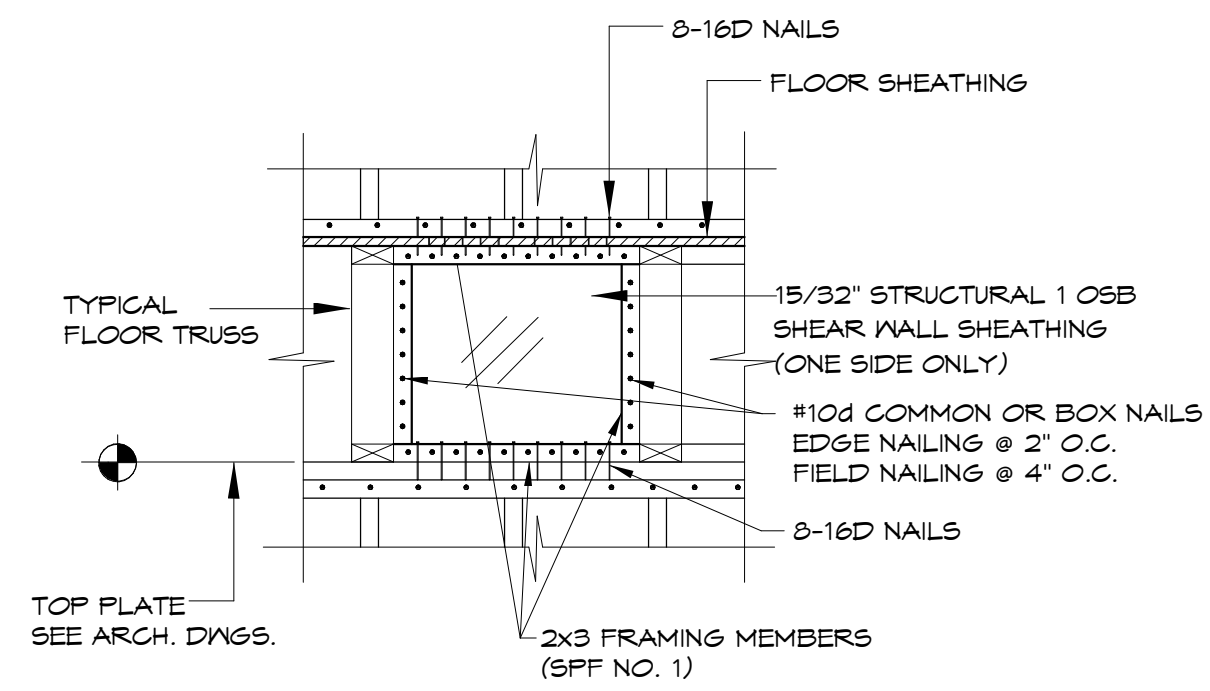
TYPICAL DETAIL OF STUD WALL TO SLAB ON DECK

NOTE: SHIMMING WILL BE REQUIRED DUE TO STEEL FRAMING DEFLECTION. (CONTINUOUS SHIMMING REQUIRED UNDER SHEAR WALLS)

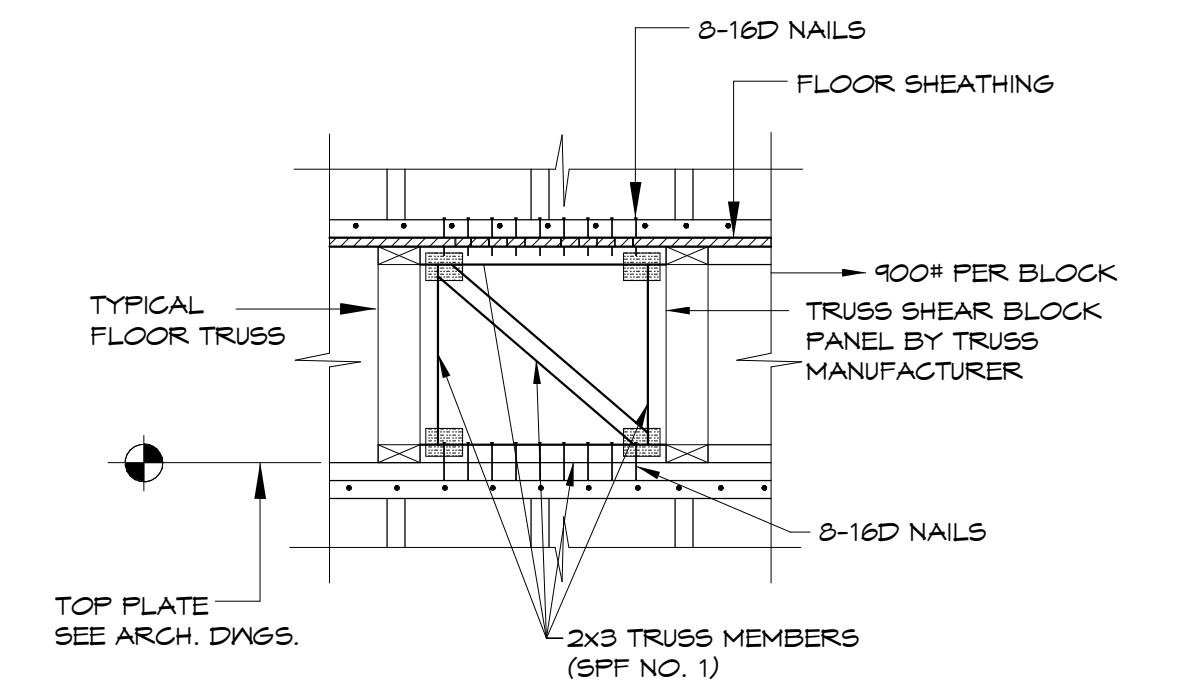
SHEAR WALL SCHEDULE

SW2 - 7/16" PLYWOOD (OSB) ONE SIDED										
	OSB-SHEATHING NAILING & BLOCKING	PLATE FASTENING & SHEAR BLOCKING	SHEAR WALL ANCHORAGE TYPE A		SHEAR WALL ANCHORAGE TYPE B		SHEAR WALL ANCHORAGE TYPE C		SHEAR WALL ANCHORAGE TYPE D	
			WALL CHORDS		WALL CHORDS		WALL CHORDS		WALL CHORDS	
			HOLDDOWNS / FLOOR TIES	HOLDDOWNS / FLOOR TIES	HOLDDOWNS / FLOOR TIES	HOLDDOWNS / FLOOR TIES	HOLDDOWNS / FLOOR TIES	HOLDDOWNS / FLOOR TIES		
ROOF	8d NAILS @ 6' o.c. 8d NAILS @ 6' o.c.	6'-0" O.C. (AT ROOF)	2-2x	2-2x	2-2x	2-2x	2-2x	2-2x		
6TH FLOOR	BLOCKED	6'-0" O.C.	N/A	N/A	C522	C522	N/A	N/A		
5TH FLOOR	8d NAILS @ 6' o.c. 8d NAILS @ 6' o.c.	4'-0" O.C.	2-2x	2-2x	2-2x	2-2x	2-2x	2-2x		
4TH FLOOR	8d NAILS @ 6' o.c. 8d NAILS @ 6' o.c.	4'-0" O.C.	N/A	N/A	HDQ8-SDS3 7/8" DIA. ROD	HDQ8-SDS3 7/8" DIA. ROD	C522	C522		
3RD FLOOR	8d NAILS @ 4' o.c. 8d NAILS @ 6' o.c.	2'-0" O.C.			HDU19 1" DIA. ROD	HDU19 1" DIA. ROD	C518	C518		
PODIUM	8d NAILS @ 4' o.c. 8d NAILS @ 6' o.c.	AT EXTERIOR WALLS - SEE NOTE 4 AT INTERIOR WALLS HLT X-CP-12-F8-S23 @ 5' O.C.			5-2x	5-2x	2-2x	2-2x		
	BLOCKED				HHDQ14-SDS2.5 1 1/4" DIA. ROD	HHDQ14-SDS2.5 1 1/4" DIA. ROD	HHDQ14-SDS2.5 1 1/4" DIA. ROD	HHDQ14-SDS2.5 1 1/4" DIA. ROD		

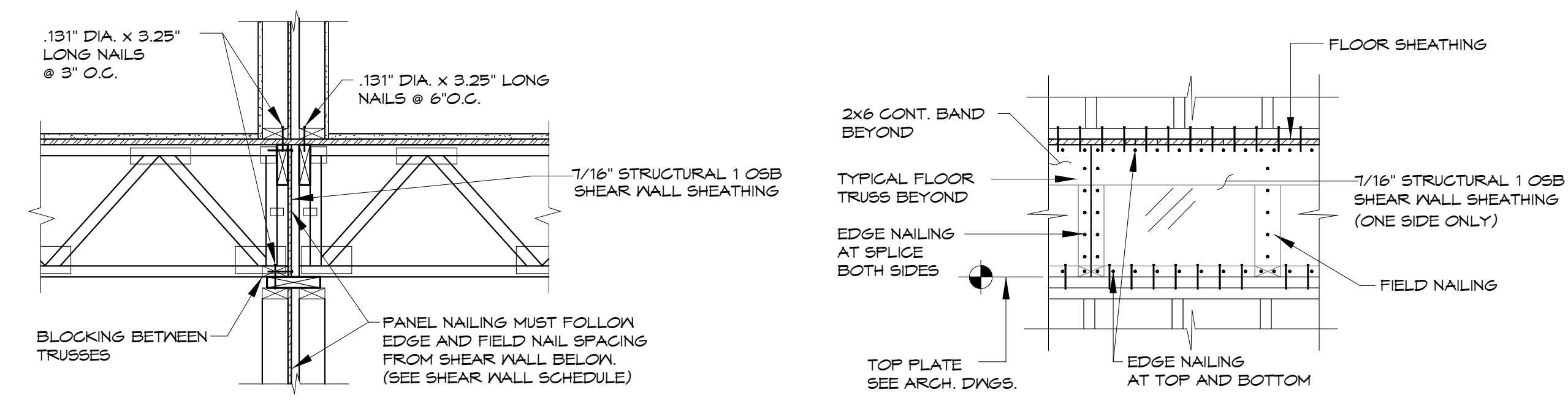
- SHEAR WALL SCHEDULE NOTES:**
- IF PLYWOOD PANELS ARE ORIENTED HORIZONTALLY THE EDGES OF ALL PANELS SHALL BE BLOCKED W/ SOLID 2X. MEMBERS.
 - VERTICALLY ORIENTED PANELS SHALL HAVE SUFFICIENT LENGTH TO SPAN FROM BOTTOM PLATE TO MID HEIGHT OF THE THE TOP PLATE.
 - FILLER PANEL AT FLOOR CAVITIES SHALL BE ATTACHED TO THE TOP PLATE OF THE LOWER WALL AND THE BOTTOM PLATE OF THE HIGHER WALL. NAIL PATTERN SHALL BE THE SAME AS THE LOWER WALL.
 - AT EXTERIOR SHEARWALLS PROVIDE 1/2" DIA. J-BOLT (T MIN. EMBEDMENT) W/ 3"x3" 1/4" PLATE WASHERS (GALV.) @ 3'-0" O.C. OR 1/2" DIA. SIMPSON TITEN HD (4 1/2" MIN. EMBEDMENT) W/ 3"x3" 1/4" PLATE WASHERS (GALV.) @ 3'-0" O.C. OR 1/2" DIA. HILTI HIT-HY 200 ADHESIVE ANCHORS (4" MIN. EMBEDMENT) W/ HAS (GALV.) STEEL ROD W/ 3"x3" 1/4" PLATE WASHERS (GALV.) @ 3'-0" O.C.
 - ALL INTERIOR SHEARWALL SHALL BE ATTACHED BY POWDER ACTUATED FASTENERS. SEE SCHEDULE FOR SPACING.
 - ALL HOLDDOWNS TO BE BY SIMPSON STRONG TIE OR EQUAL.



TYP. PLYWOOD SHEAR BLOCK PANEL DETAIL OPTION #1



TYP. TRUSS SHEAR BLOCK PANEL DETAIL OPTION #2



NOTE: PANEL NAILING PATTERN MUST FOLLOW EDGE AND FIELD NAIL SPACING FROM SHEAR WALL BELOW. SEE SHEAR WALL SCHEDULE.

TYPICAL PLYWOOD SHEAR BLOCK PANEL DETAIL OPTION #3

Prepared For:
NewHeight Group
118 Congress Street, Unit 401
Portland, Maine

Consulting Engineer:
VEITAS VEITAS engineers
638 Granite Street, Suite 1014
Beverly, Massachusetts 02184
Tel: (978) 686-7444 Fax: (978) 266-2605

Architect:
ARCHETYPE architects
48 Union Wharf Portland, Maine 04101
(207) 773-6022 ARCHETYPE@ARCHETYPEPA.COM

Project:
LUMINATO
Newbury Street Portland, Maine

Revisions:	FOUNDATION PERMIT
05/16/16	80% REVIEW DRAWINGS
06/07/16	100% STRUCTURAL DRAWINGS
06/24/16	100% CONSTRUCTION DRAWINGS
07/20/16	100% CONSTRUCTION DRAWINGS

Date: 04/19/16
Scale: 3/4" = 1'-0"
SHEAR WALL SCHEDULE & DETAILS

S303