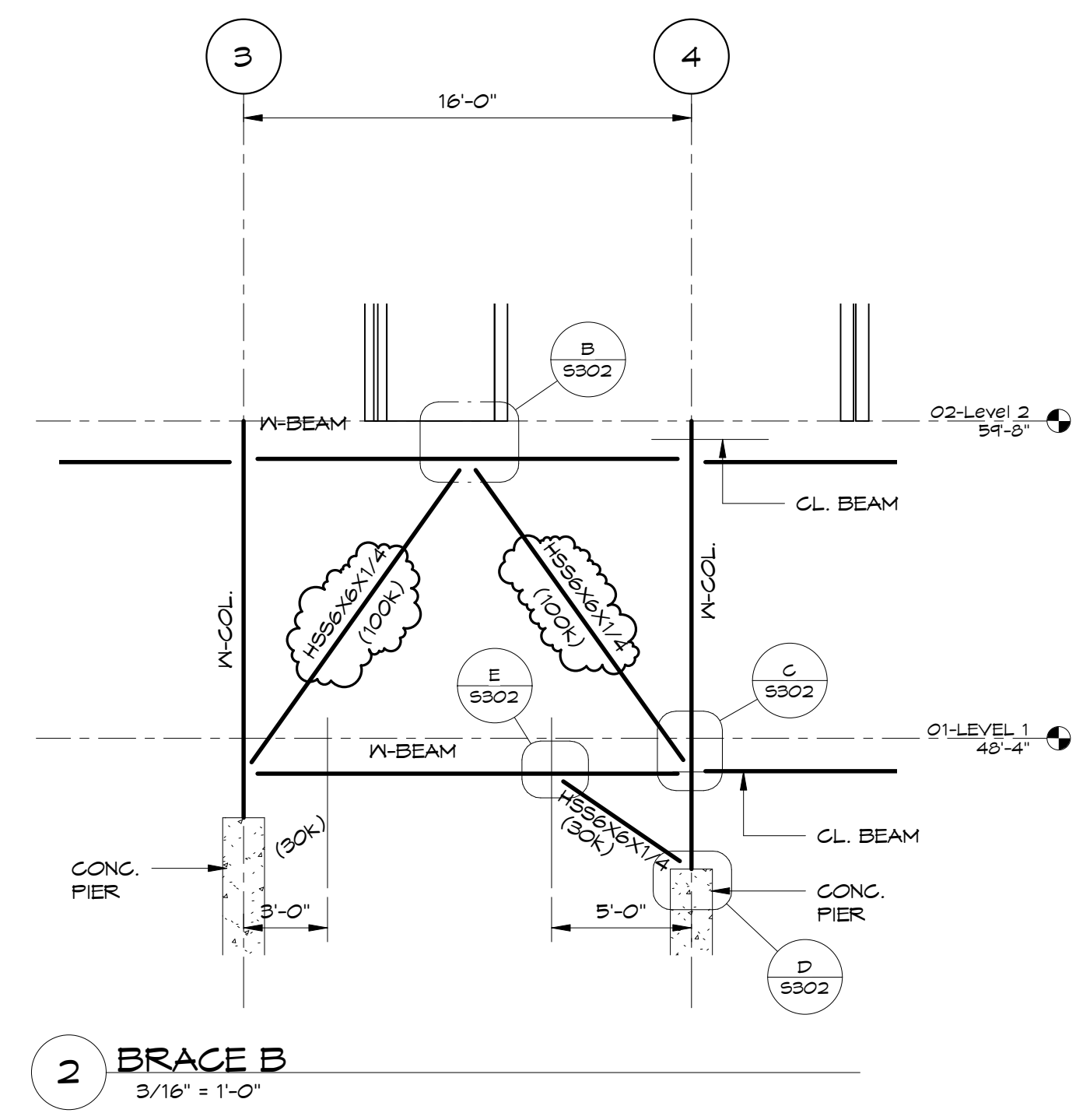
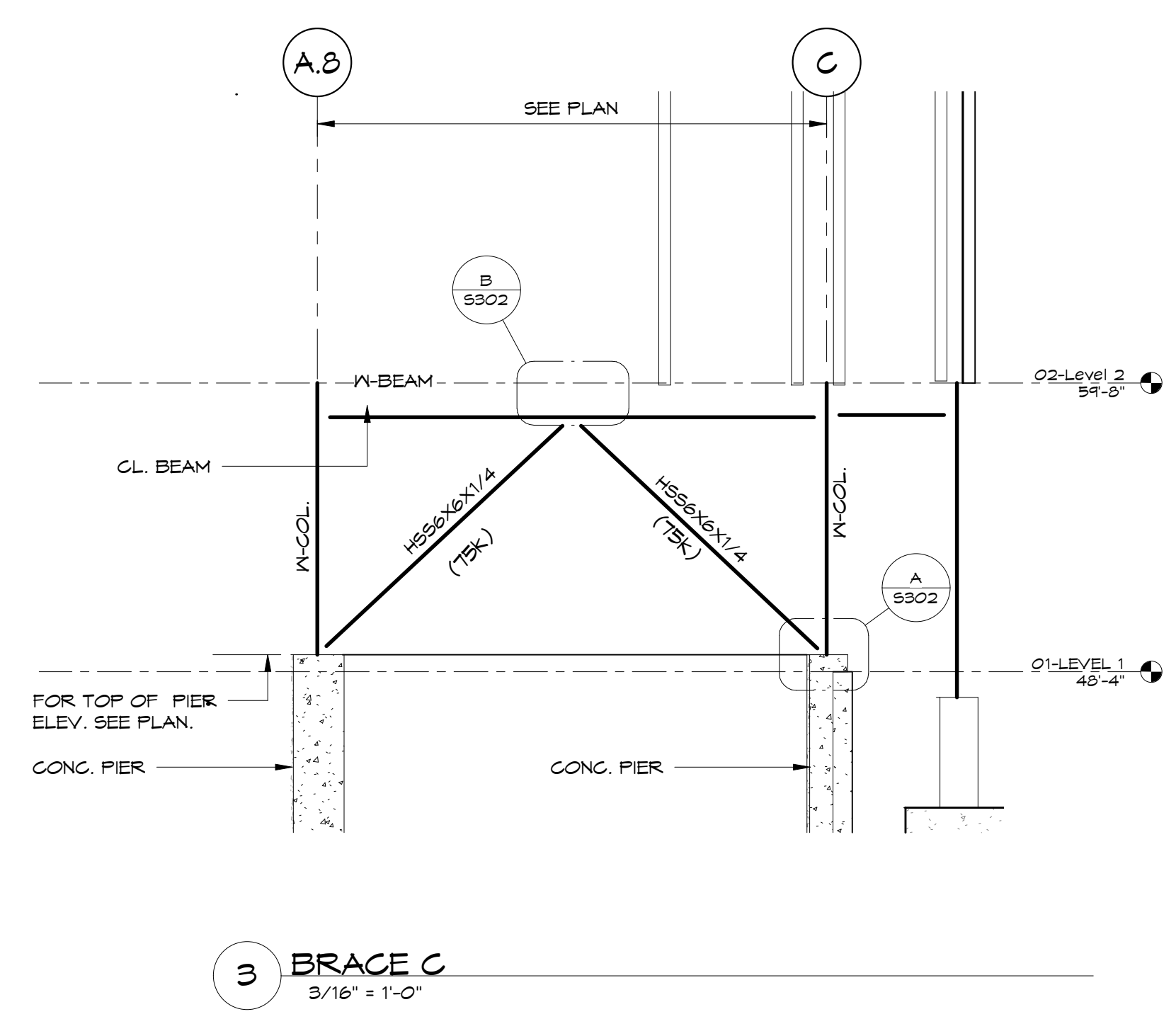


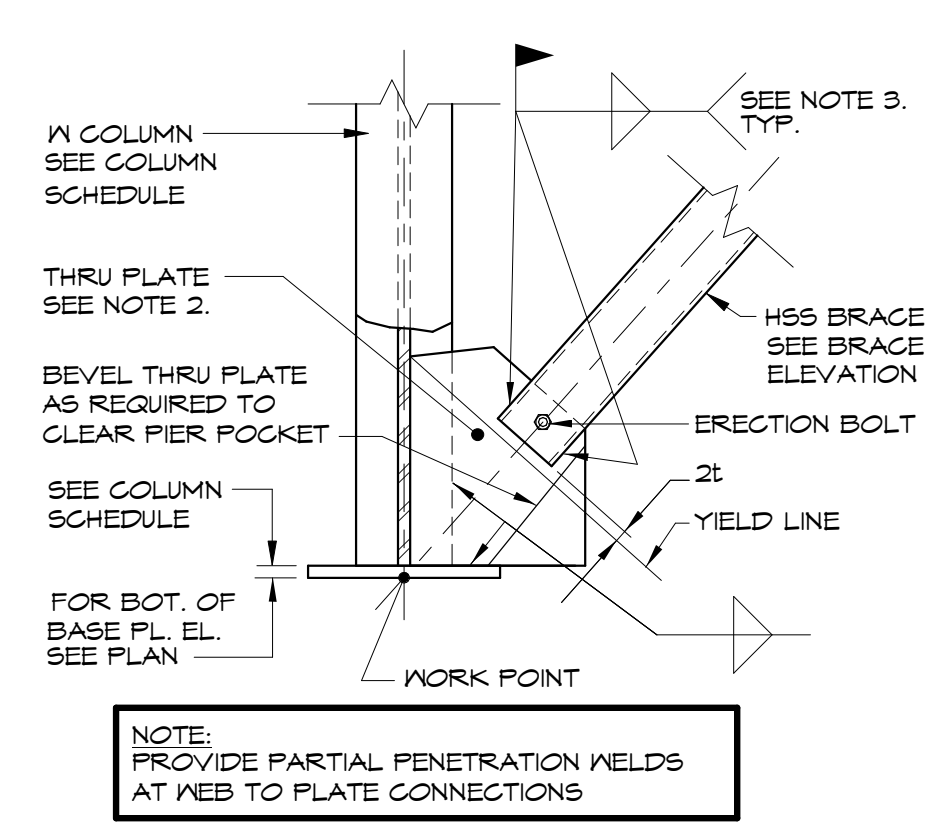
1 BRACE A
3/16" = 1'-0"



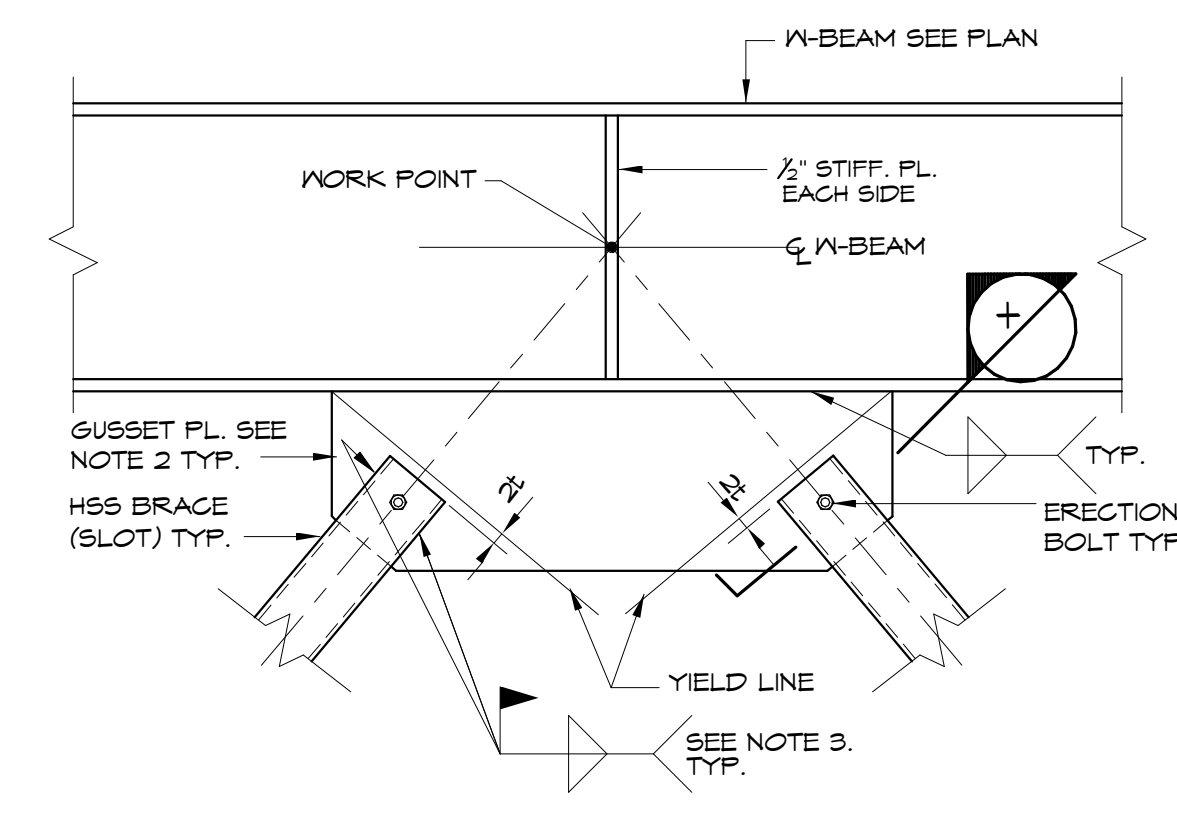
2 BRACE B
3/16" = 1'-0"



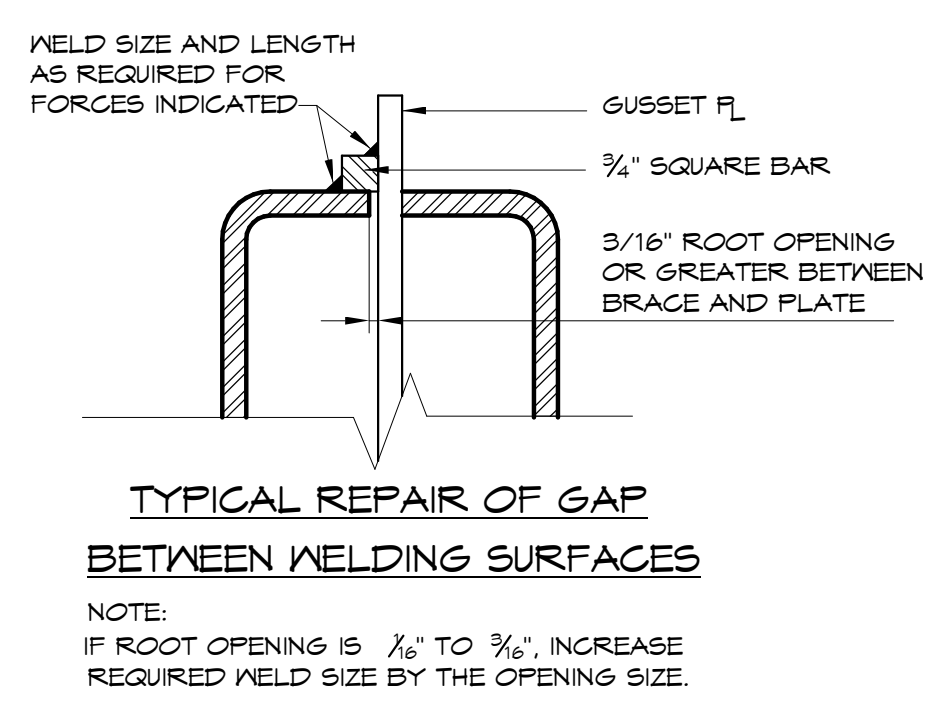
3 BRACE C
3/16" = 1'-0"



A DETAIL
3/4" = 1'-0"

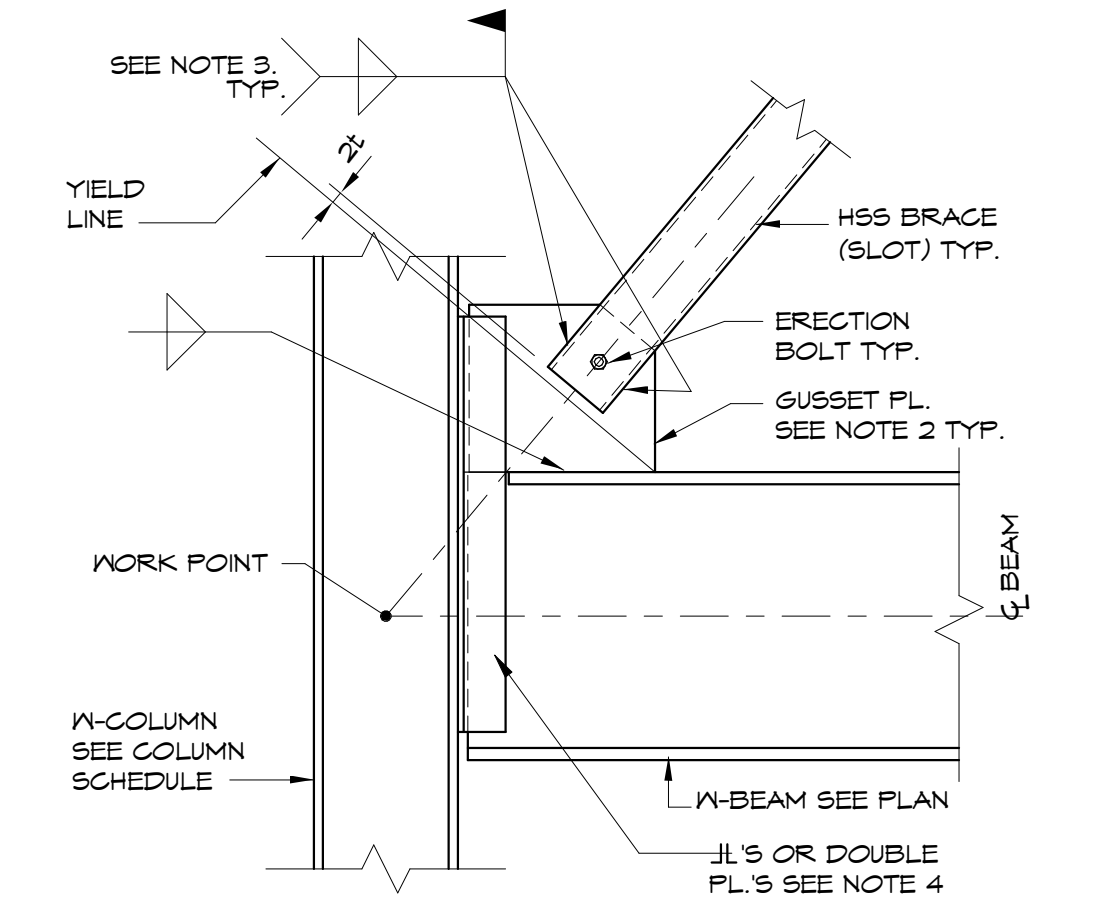


B DETAIL
3/4" = 1'-0"



TYPICAL REPAIR OF GAP BETWEEN WELDING SURFACES

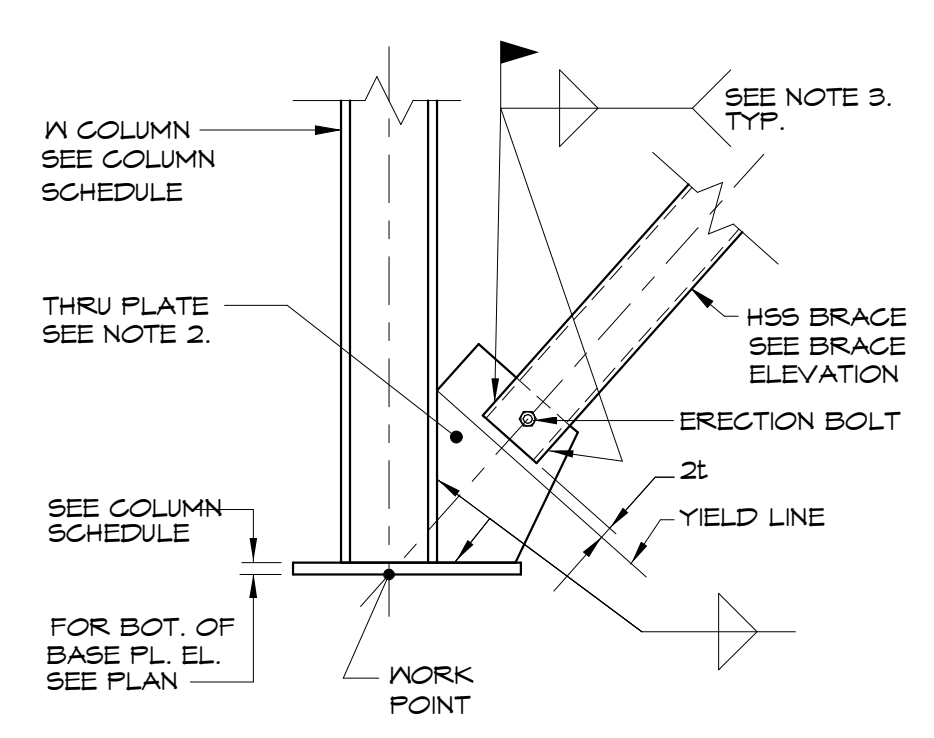
NOTE: IF ROOT OPENING IS 1/8" TO 3/8", INCREASE REQUIRED WELD SIZE BY THE OPENING SIZE.



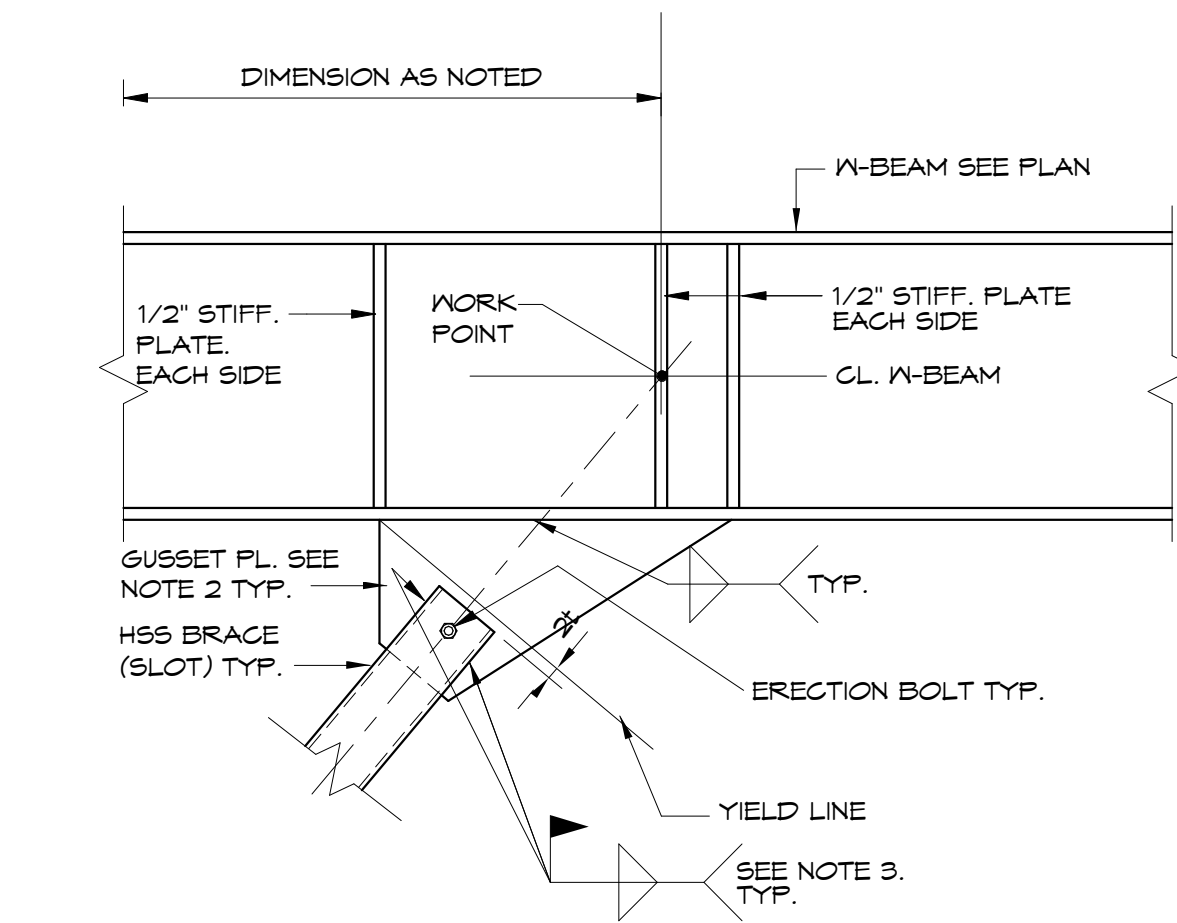
C DETAIL
3/4" = 1'-0"

NOTE
(105K) ETC. INDICATES FACTORED (LRFD) AXIAL FORCE IN THE BRACE MEMBERS FOR THE USE IN CONNECTION DESIGN. TO CHANGE LRFD LOAD TO ASD DIVIDE LRFD BY 1.5 (LRFD/1.5=ASD).

- BRACE DETAIL NOTES:
1. FOR NUMBER, SIZE AND LENGTHS OF ANCHOR BOLTS SEE BASE PLATE DETAILS
 2. ALL BRACE GUSSET PLATES TO BE 1/2" THICK MIN.
 3. DETAILER TO PROVIDE SIZE AND LENGTH OF FIELD FILLET WELDS OF HSS BRACE TO PLATES ON THE ERECTION DRAWINGS.
 4. SHEAR CAPACITY OF CONNECTION TO BE BRACING LOAD PLUS BEAM SHEAR INDICATED ON PLANS.
 5. DETAILER TO REVIEW INSTALLATION OF BRACE MEMBER. SUBMIT DIAGRAM INDICATING HOW BRACE WILL FIT.



D DETAIL
3/4" = 1'-0"



E DETAIL
3/4" = 1'-0"

Prepared For: **NewHeight Group**
118 Congress Street, Unit 401
Portland, Maine

Consulting Engineer: **VEITAS VEITAS** engineers
638 Granite Street, Suite 101
Beverly, Massachusetts 02184
TEL: (781) 266-2800 FAX: (781) 266-2805

Architect: **ARCHETYPE architects**
48 Union Wharf Portland, Maine 04101
(207) 775-6022 ARCHETYPE@ARCHETYPEPA.COM

Project: **LUMINATO**
Newbury Street Portland, Maine

Revisions:	05/16/16	FOUNDATION PERMIT
	06/07/16	80% REVIEW DRAWINGS
	06/24/16	100% STRUCTURAL DRAWINGS
	07/20/16	100% CONSTRUCTION DRAWINGS

Date: 04/19/16
Scale: As indicated

BRACE FRAMES & DETAILS

S302