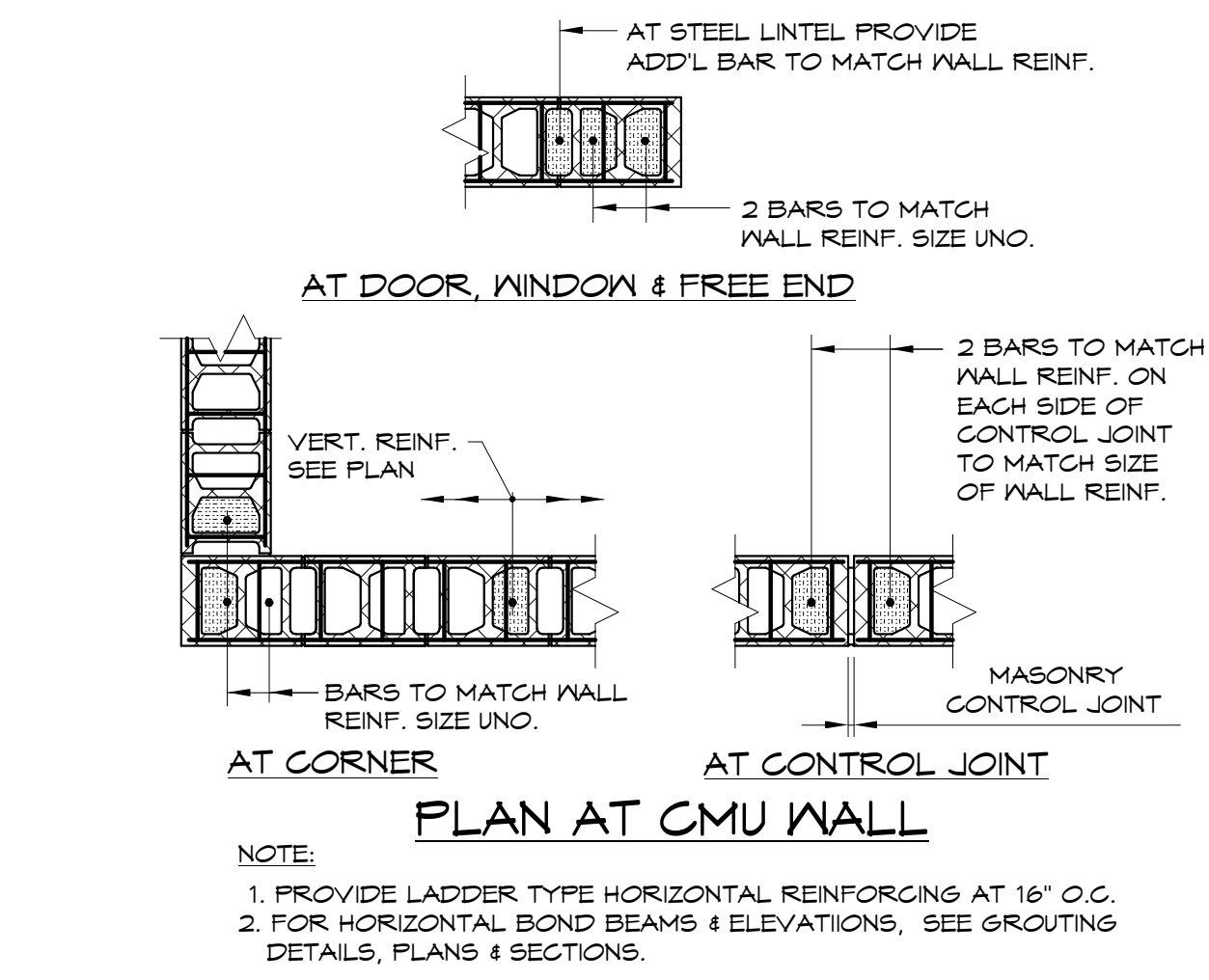
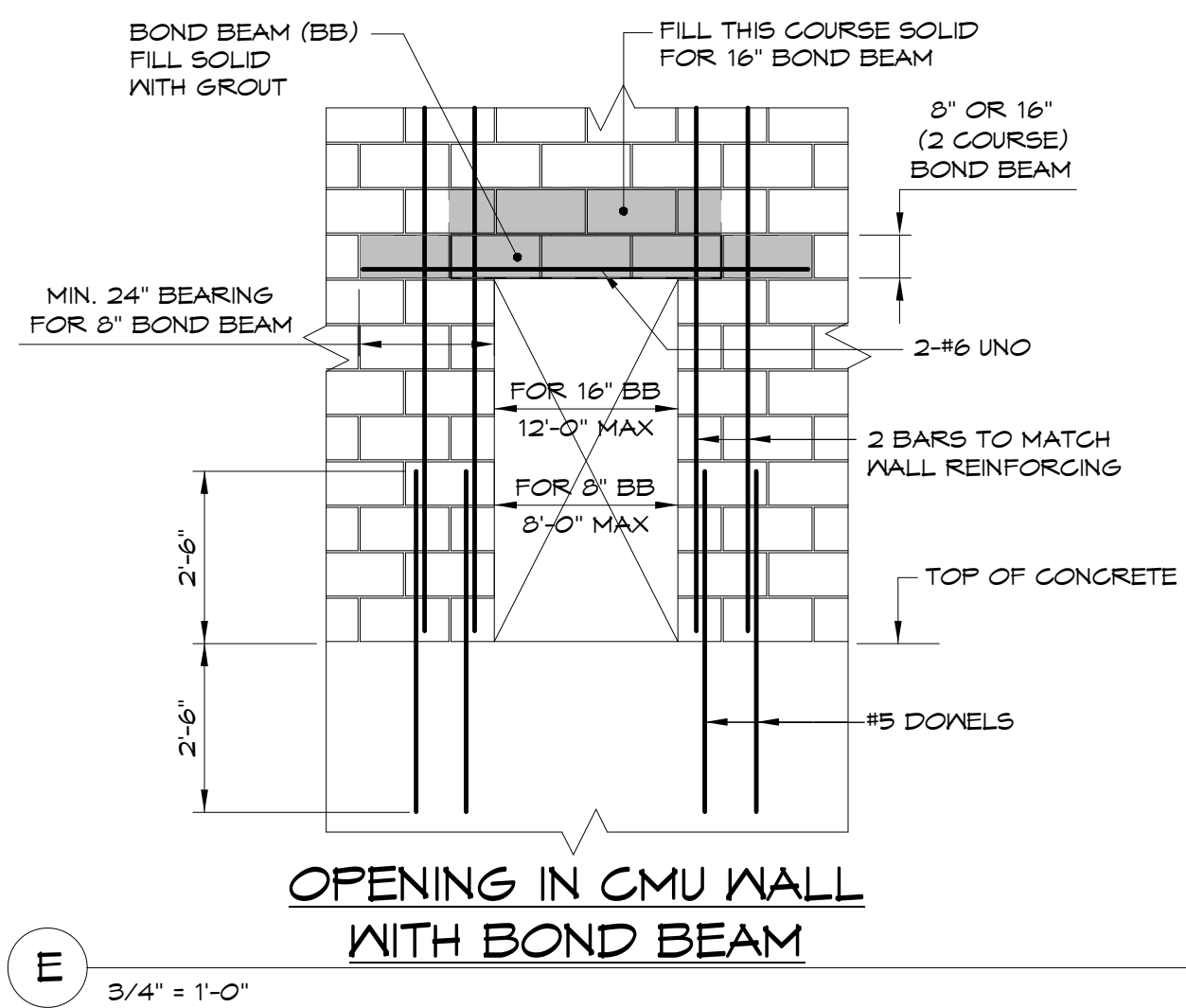


A 3/4" = 1'-0"
TYPICAL LOW LIFT GROUTING DETAIL



B 1/2" = 1'-0"
AT DOOR, WINDOW & FREE END
AT CORNER
AT CONTROL JOINT

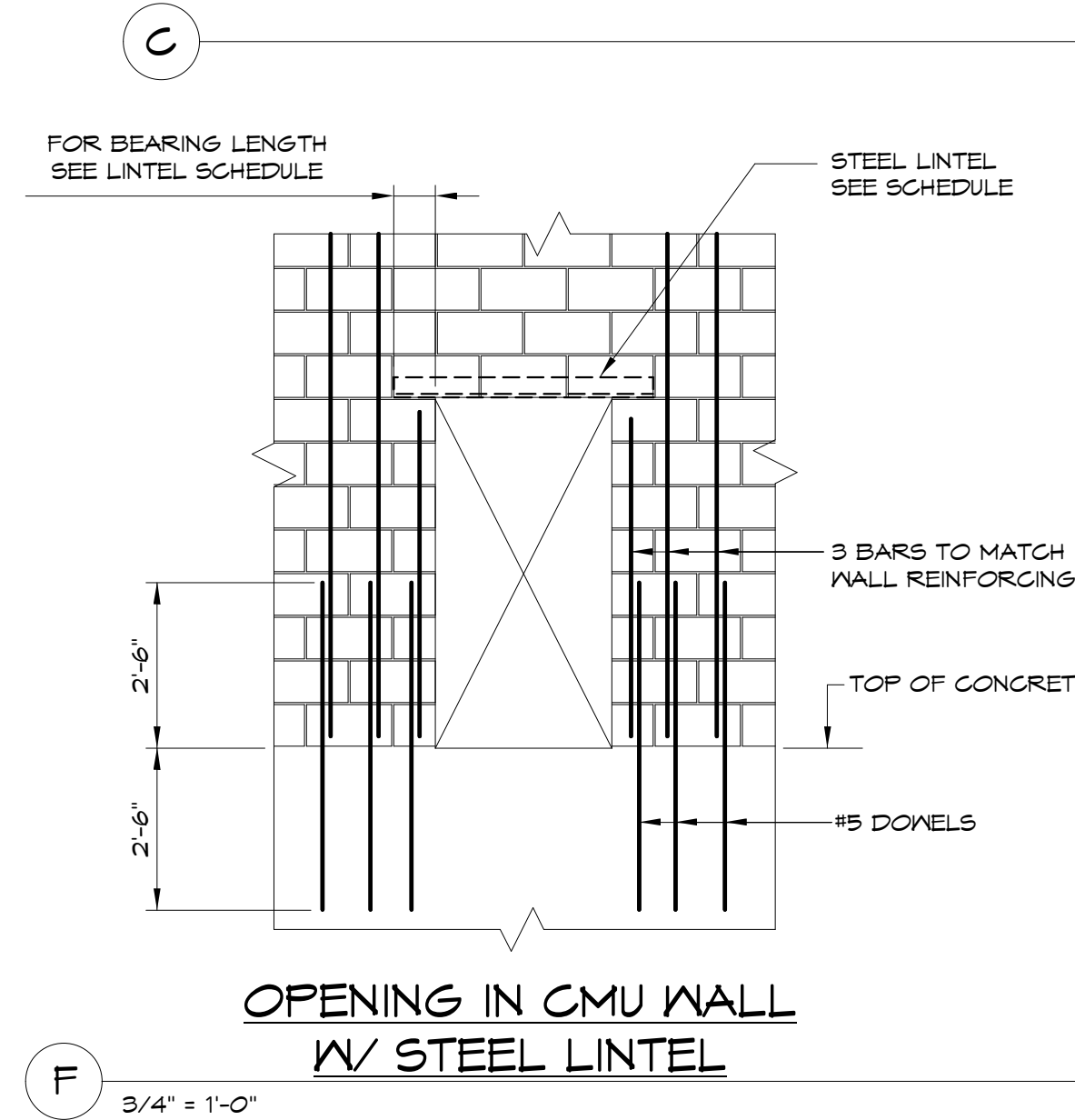


E 3/4" = 1'-0"

LOOSE LINTEL SCHEDULE

OPENING	LINTEL	BEARING EACH END	REMARKS
3'-6" OR LESS	L3 1/2x3 1/2x 1/4"	4"	---
OVER 3'-6" THRU 5'-6"	L4x3 1/2x 1/4"	6"	LLV
OVER 5'-6" THRU 7'-6"	L6x3 1/2x 1/4"	6"	LLV
OVER 7'-6" THRU 9'-0"	L6x3 1/2x 3/8"	6"	LLV

- NOTES:**
1. WHERE ANGLE LINTELS ARE REQUIRED PROVIDE ONE ANGLE FOR EACH 4" OR LESS THICKNESS OF MASONRY.
 2. FOR OPENINGS OVER 6'-0" PROVIDE SOLID MASONRY JAM UNDER LINTEL AT EACH SIDE OF OPENING.
 3. LINTELS INDICATED ON PLAN SUPERSEDE THE REQUIREMENTS OF THIS SCHEDULE.
 4. ALL EXTERIOR LINTELS SHALL BE HOT DIP GALVANIZED.
 5. ALL OTHER LINTELS SHALL BE PRIME PAINTED.



F 3/4" = 1'-0"

Date: 04/19/16
Scale: As indicated
Project: LUMINATO
Architect: ARCHETYPE architects
Consulting Engineer: VEITAS VEITAS engineers
Prepared For: NewHeight Group
Revisions:
05/16/16 FOUNDATION PERMIT
06/07/16 80% REVIEW DRAWINGS
06/24/16 100% STRUCTURAL DRAWINGS
07/20/16 100% CONSTRUCTION DRAWINGS
Address: 48 Union Wharf Portland, Maine 04101
Newbury Street Portland, Maine
118 Congress Street, Unit 401 Portland, Maine
Sheet: S204