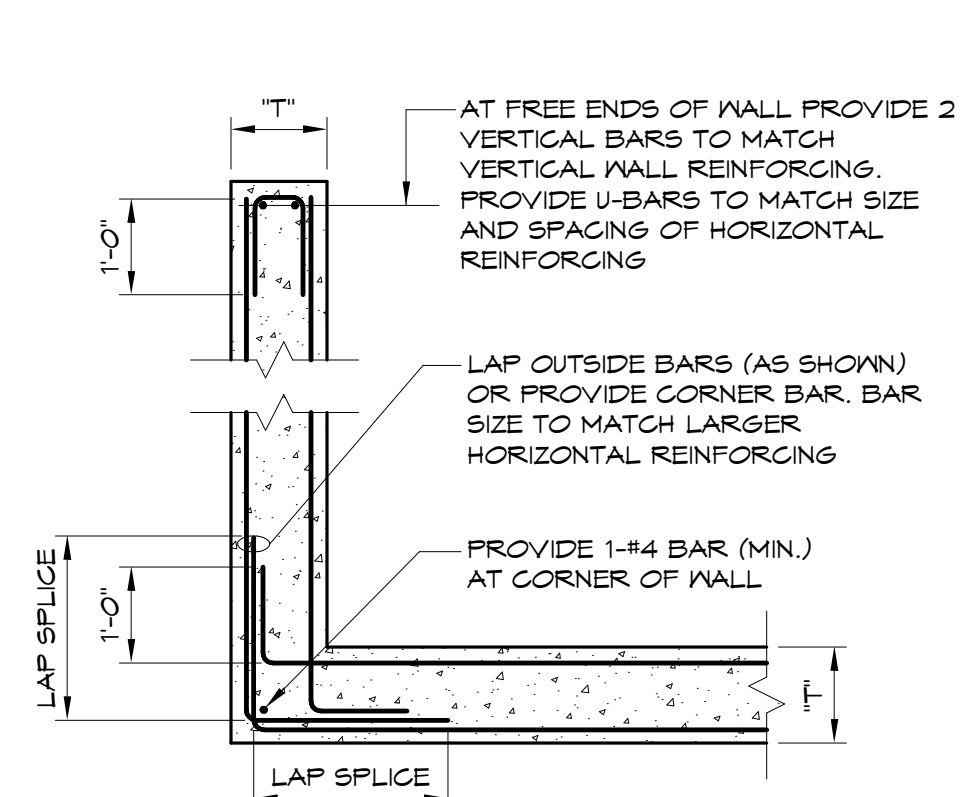
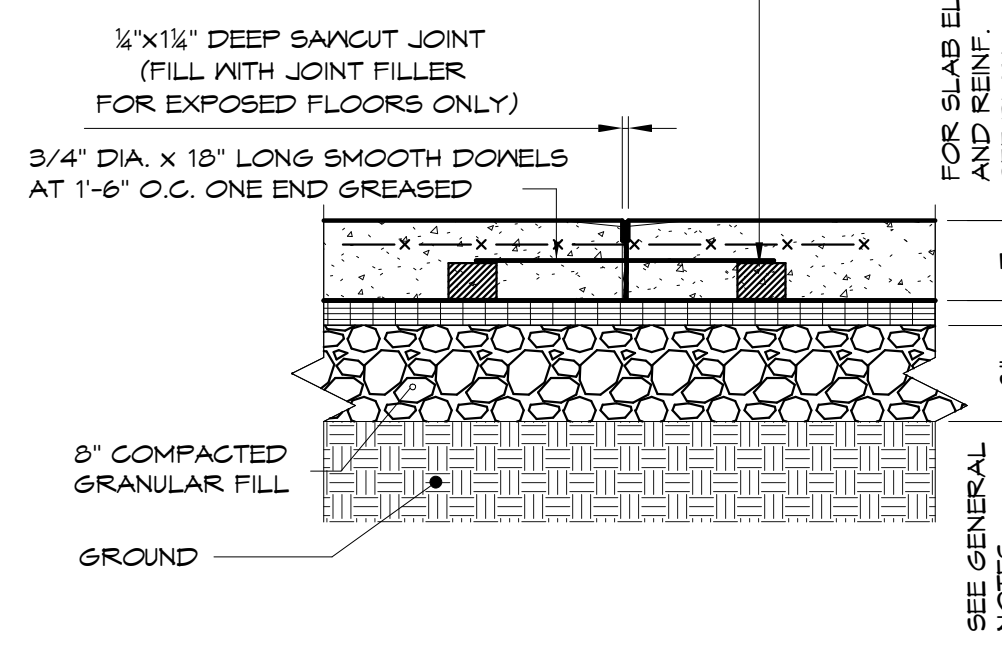


**A HORIZONTAL REINFORCING OF CONCRETE WALLS**  
1/2" = 1'-0"

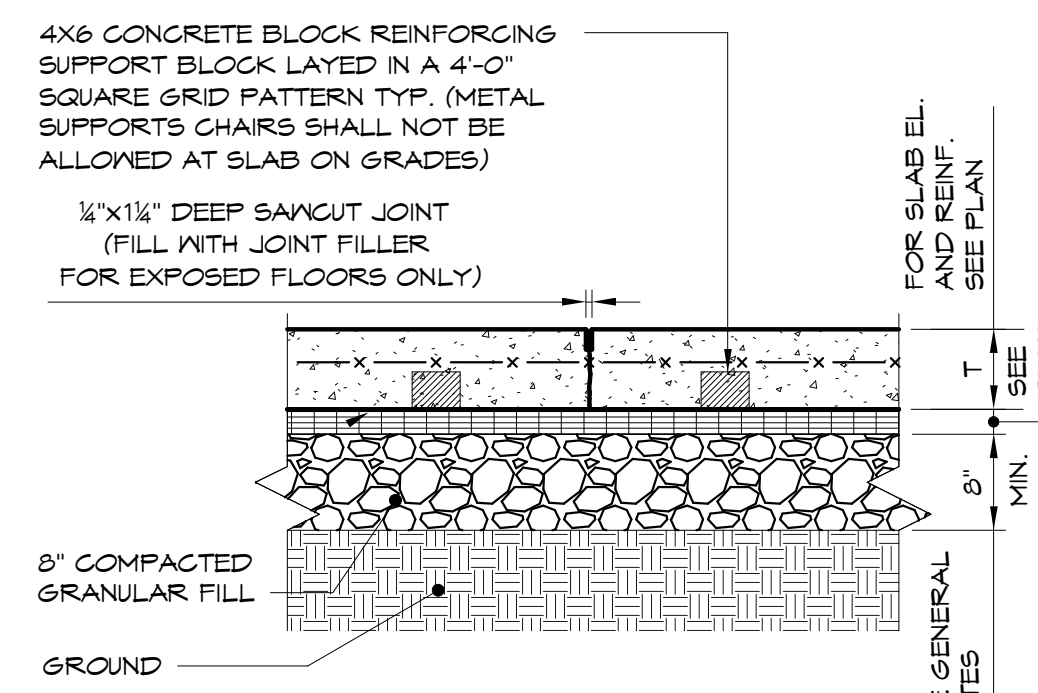


**B HORIZONTAL REINFORCING OF CONCRETE WALLS**  
1/2" = 1'-0"

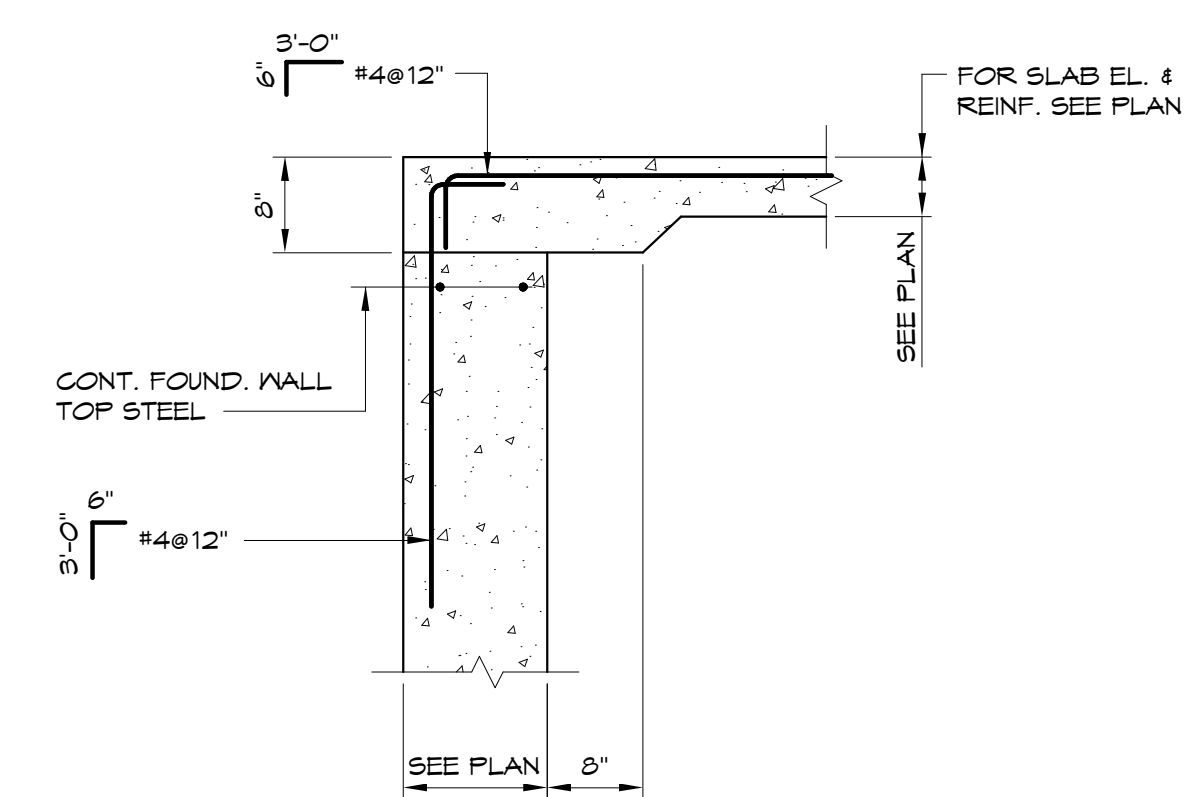
4X6 CONCRETE BLOCK REINFORCING SUPPORT BLOCK LAYED IN A 4'-0" SQUARE GRID PATTERN TYP. (METAL SUPPORTS CHAIRS SHALL NOT BE ALLOWED AT SLAB ON GRADES)



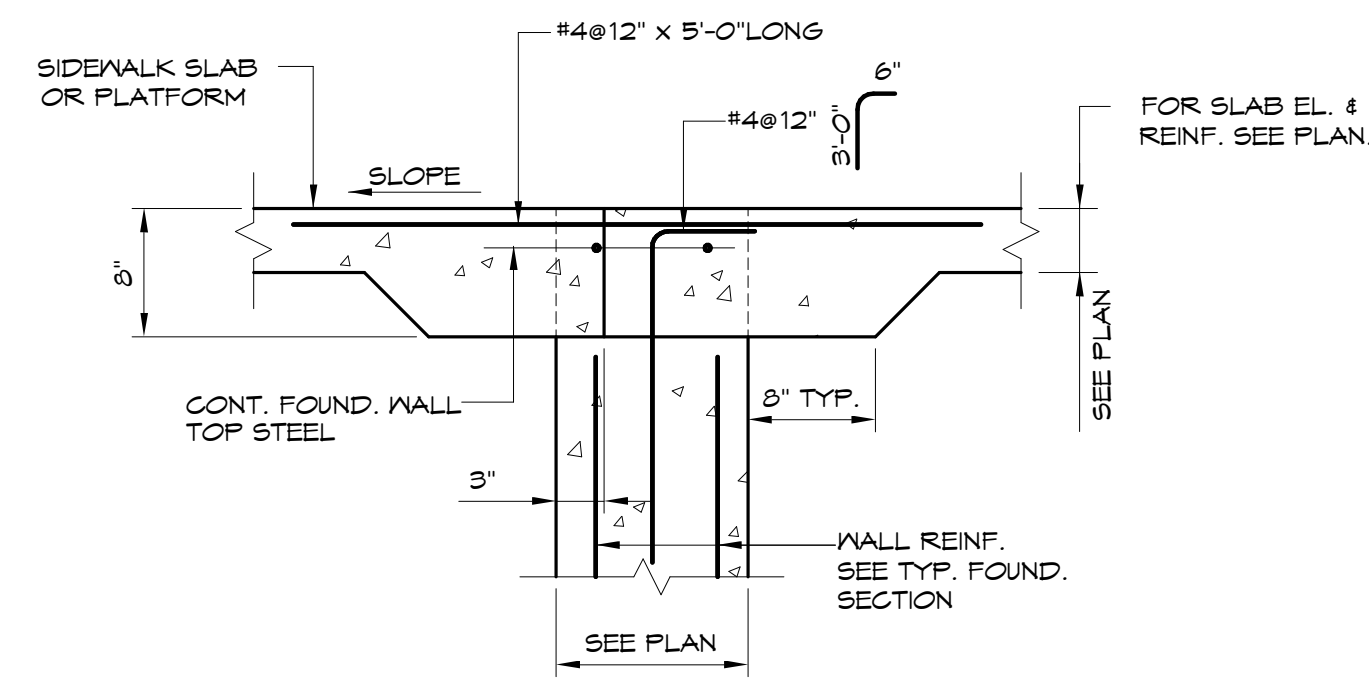
**C TYPICAL SLAB ON GRADE CONSTRUCTION JOINT DETAIL**  
3/4" = 1'-0"



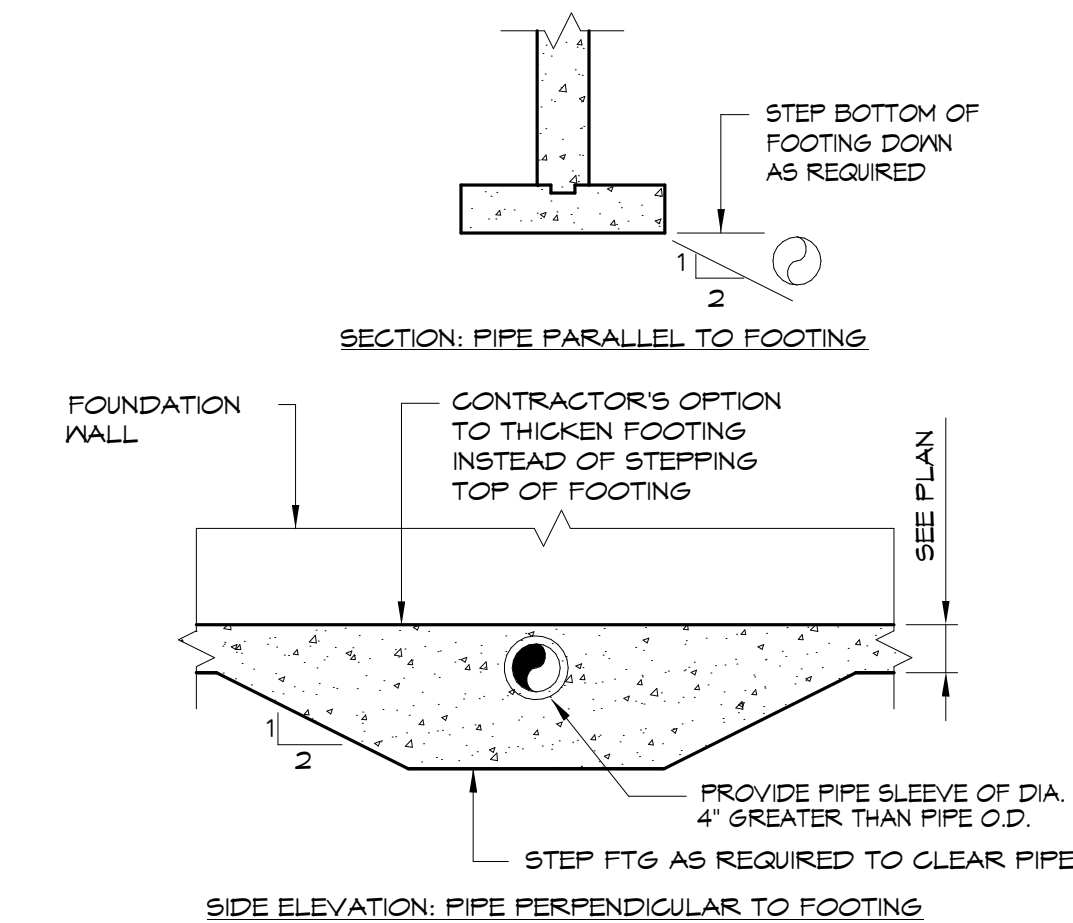
**D TYPICAL SAW CUT CONTROL JOINT DETAIL**  
3/4" = 1'-0"



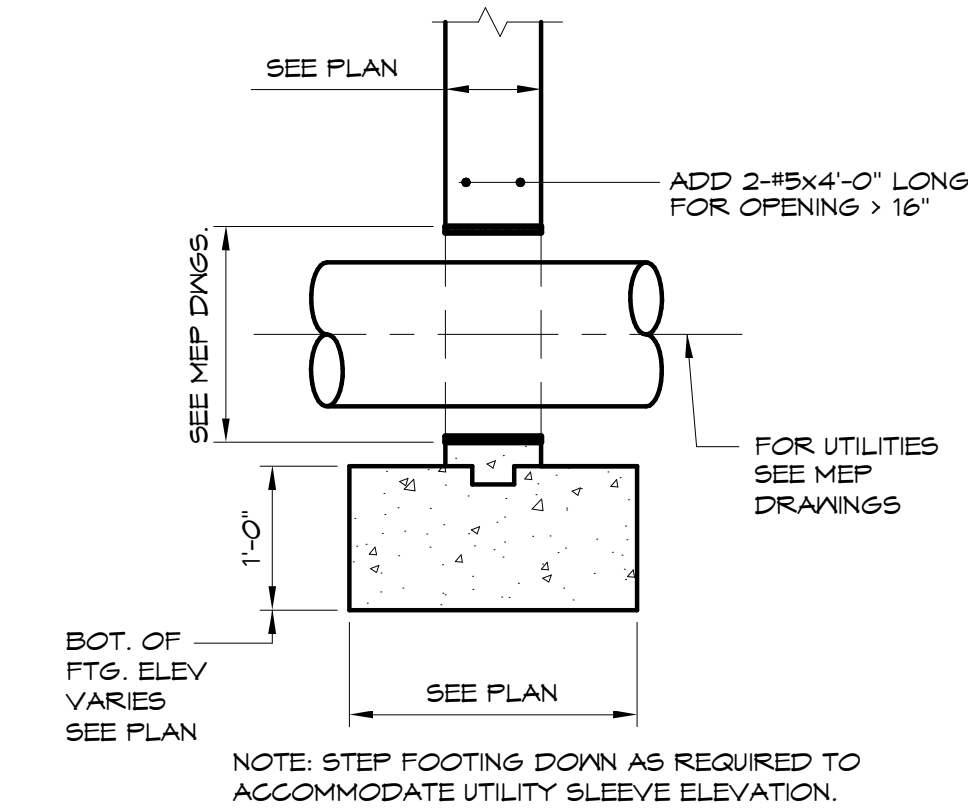
**E TYPICAL WALL SECTION AT DOORWAY**  
3/4" = 1'-0"



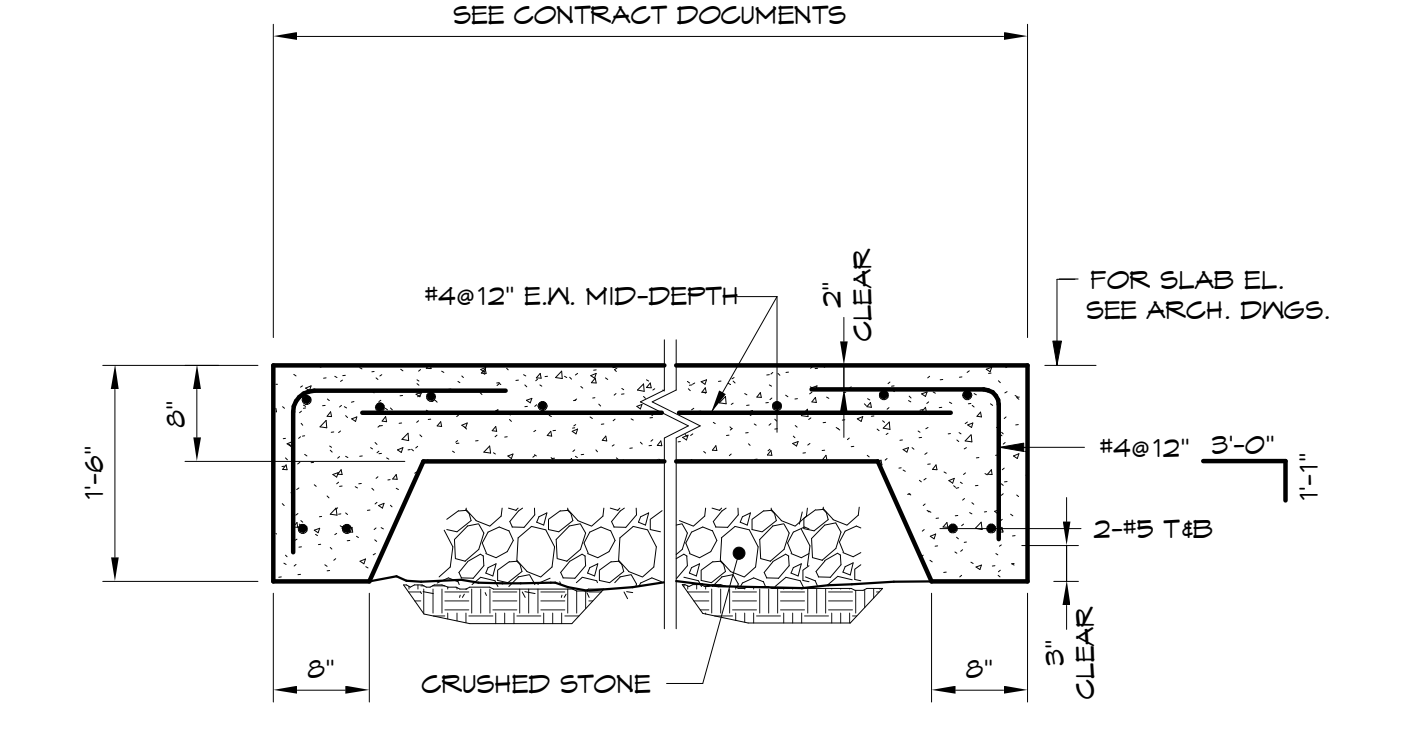
**F TYPICAL WALL SECTION AT DOORWAY W/SIDEWALK OR PLATFORM**  
1" = 1'-0"



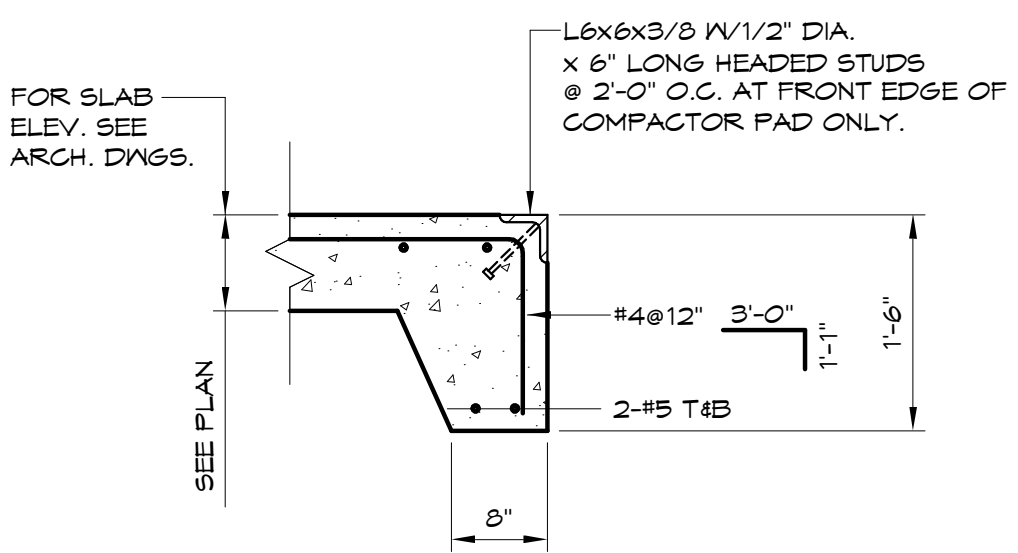
**G TYPICAL FOOTING DETAILS AT PIPE**  
1/2" = 1'-0"



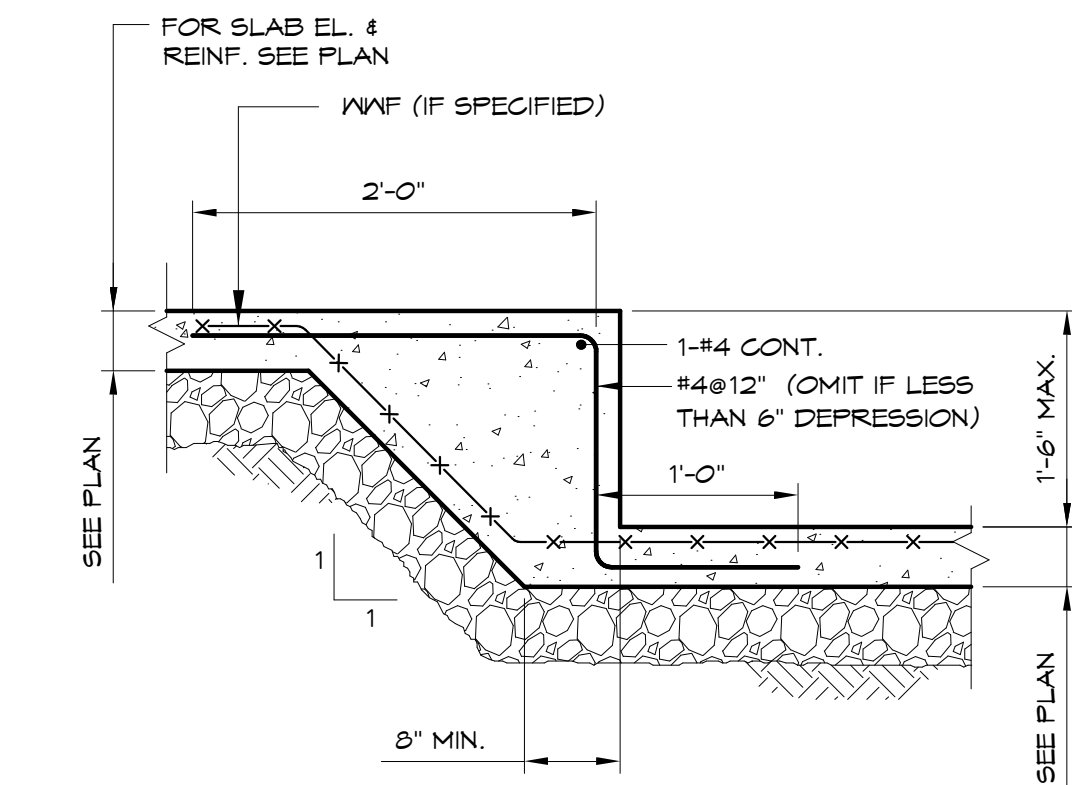
**H TYPICAL UTILITY SLEEVE**  
3/4" = 1'-0"



**J TYPICAL EXTERIOR COMPACTOR PAD DETAIL**  
3/4" = 1'-0"



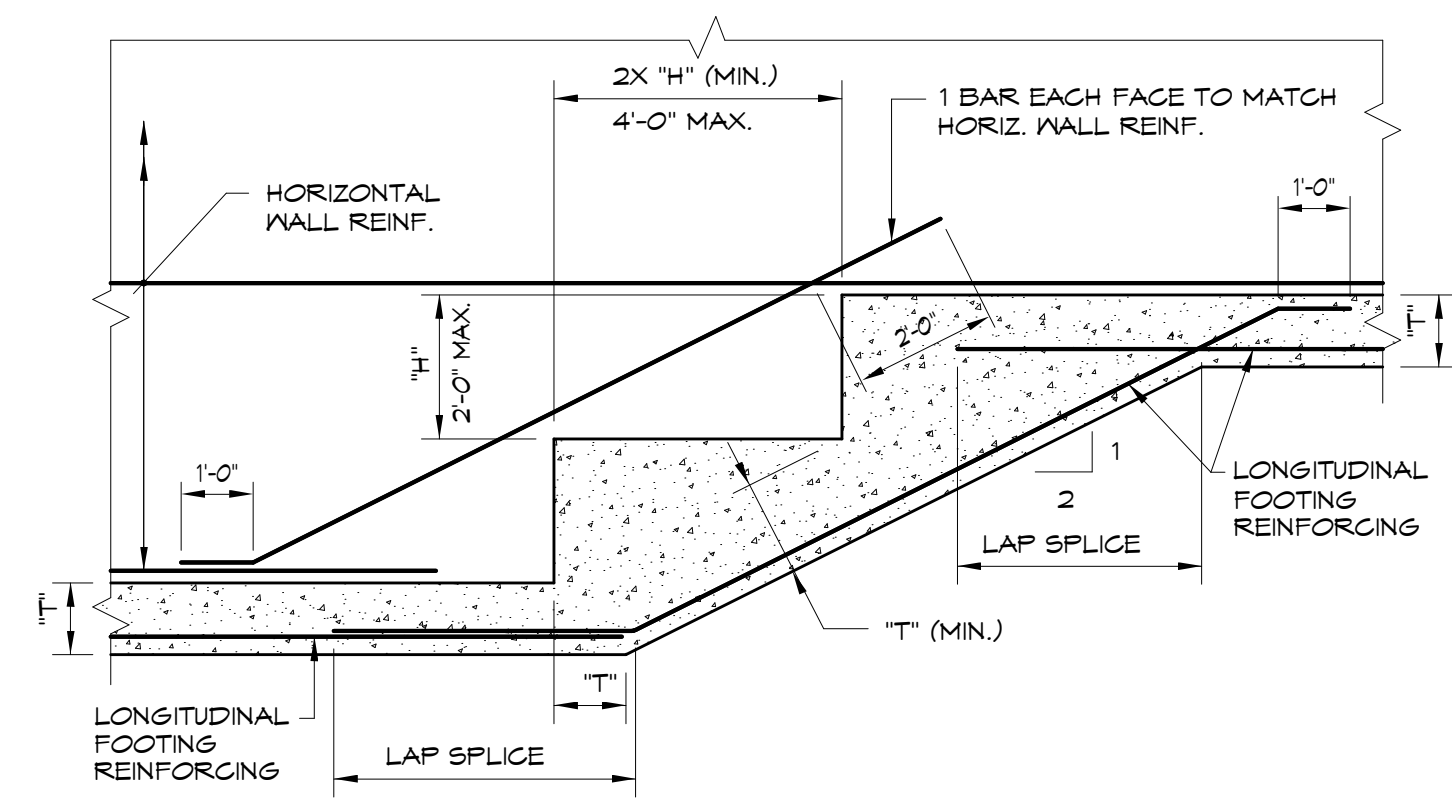
**K TYPICAL EXTERIOR PAD EDGE DETAIL**  
3/4" = 1'-0" 3/4" = 1'-0" (16)



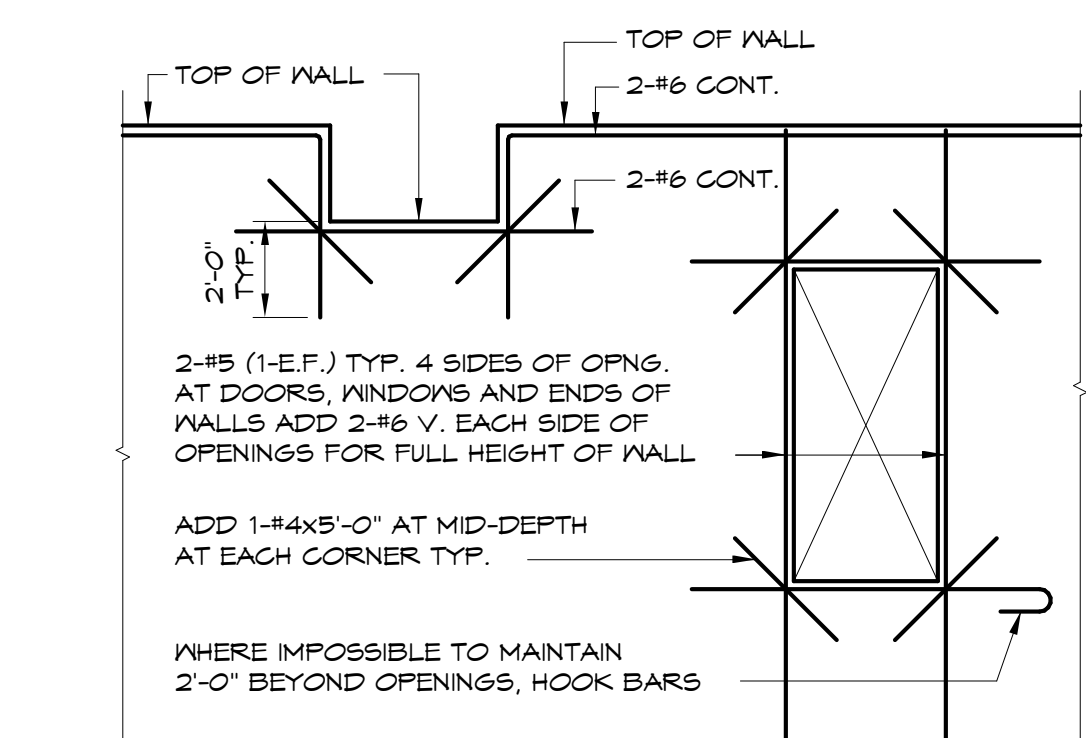
**L DEPRESSION AT SLAB ON GRADE**  
3/4" = 1'-0"

| BAR SIZE | CONCRETE REINFORCING SPLICE SCHEDULE |                       |          |                             |          |
|----------|--------------------------------------|-----------------------|----------|-----------------------------|----------|
|          | "LAP SPLICES"                        | "TENSION LAP SPLICES" |          | "COMPRESSION" "LAP SPLICES" |          |
|          |                                      | ALL CONCRETE          | TOP BARS | OTHER BARS                  | TOP BARS |
| 3        | 14"                                  | 20"                   | 21"      | 24"                         | 19"      |
| 4        | 18"                                  | 31"                   | 29"      | 32"                         | 25"      |
| 5        | 23"                                  | 46"                   | 36"      | 40"                         | 31"      |
| 6        | 27"                                  | 56"                   | 43"      | 48"                         | 37"      |
| 7        | 32"                                  | 61"                   | 63"      | 70"                         | 53"      |

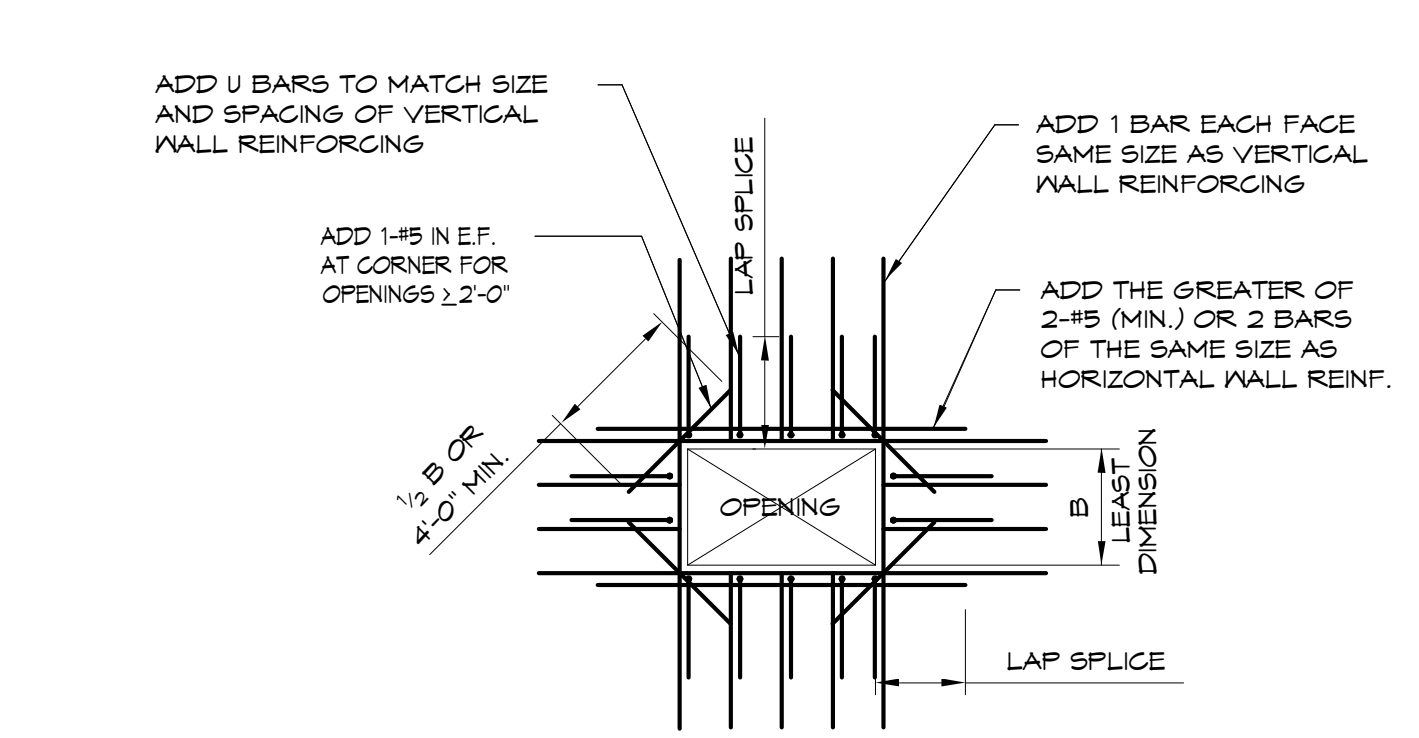
NOTES:  
1. ALL SPLICES TO BE "LAP SPLICES" UNLESS NOTED OTHERWISE IN SECTIONS.  
2. TENSION AND COMPRESSION LAP SPLICE WILL BE INDICATED ON PLANS AND SECTIONS.  
3. A TOP BAR IS A HORIZONTAL WITH AT LEAST 12" OF FRESH CONCRETE BELOW.  
4. EPOXY-COATED REINFORCING SPLICES SHALL BE INCREASED ACCORDING TO AC308.



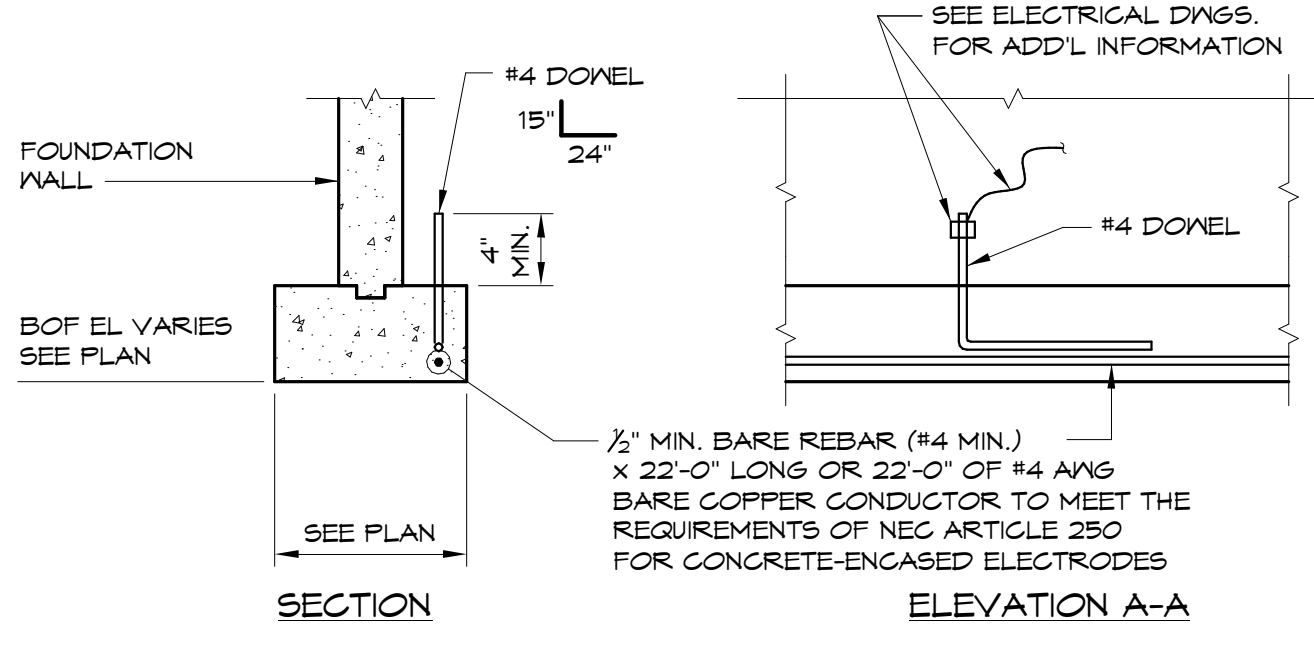
**N CONTINUOUS STEPPED WALL FOOTING**  
3/8" = 1'-0"



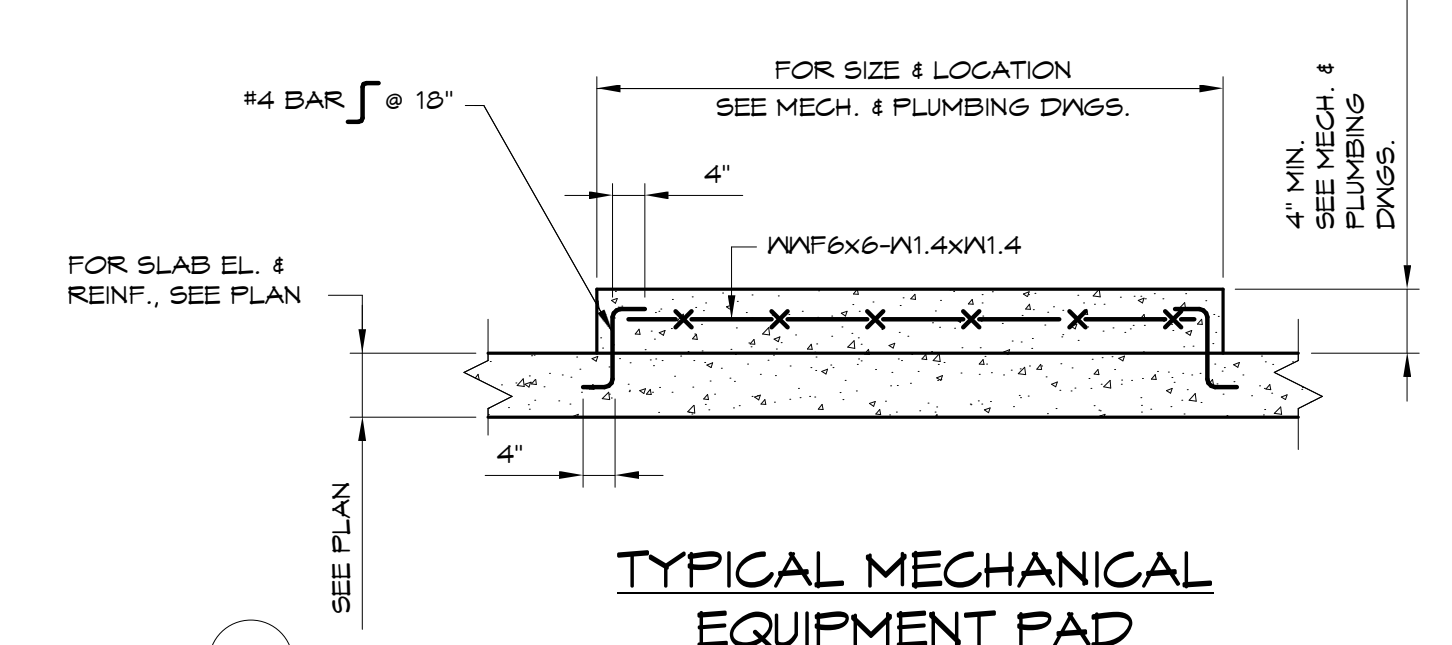
**P TYP. DETAIL AT OPENINGS AND BREAK IN WALLS**  
1/4" = 1'-0"



**Q TYPICAL CONCRETE WALL OPENING**  
1/4" = 1'-0"



**R CONCRETE ENCASED ELECTRODE**  
1/2" = 1'-0"



**S TYPICAL MECHANICAL EQUIPMENT PAD**  
1/2" = 1'-0"

Prepared For: **NewHeight Group**  
118 Congress Street, Unit 401  
Portland, Maine

Consulting Engineer: **VEITAS VEITAS** engineers  
68 Granite Street, Suite 101  
Business, Scarborough, ME 04114  
Tel: (708) 266-7444 Fax: (708) 266-2905

Architect: **ARCHETYPE** architects  
48 Union Wharf Portland, Maine 04101  
(207) 775-6022 ARCHETYPE@ARCHETYPEPA.COM

Project: **LUMINATO**  
Newbury Street Portland, Maine

Revisions:  
05/16/16 FOUNDATION PERMIT  
06/07/16 80% REVIEW DRAWINGS  
06/24/16 100% STRUCTURAL DRAWINGS  
07/20/16 100% CONSTRUCTION DRAWINGS

Date: **04/19/16** As indicated  
**TYPICAL DETAILS**

**S202**