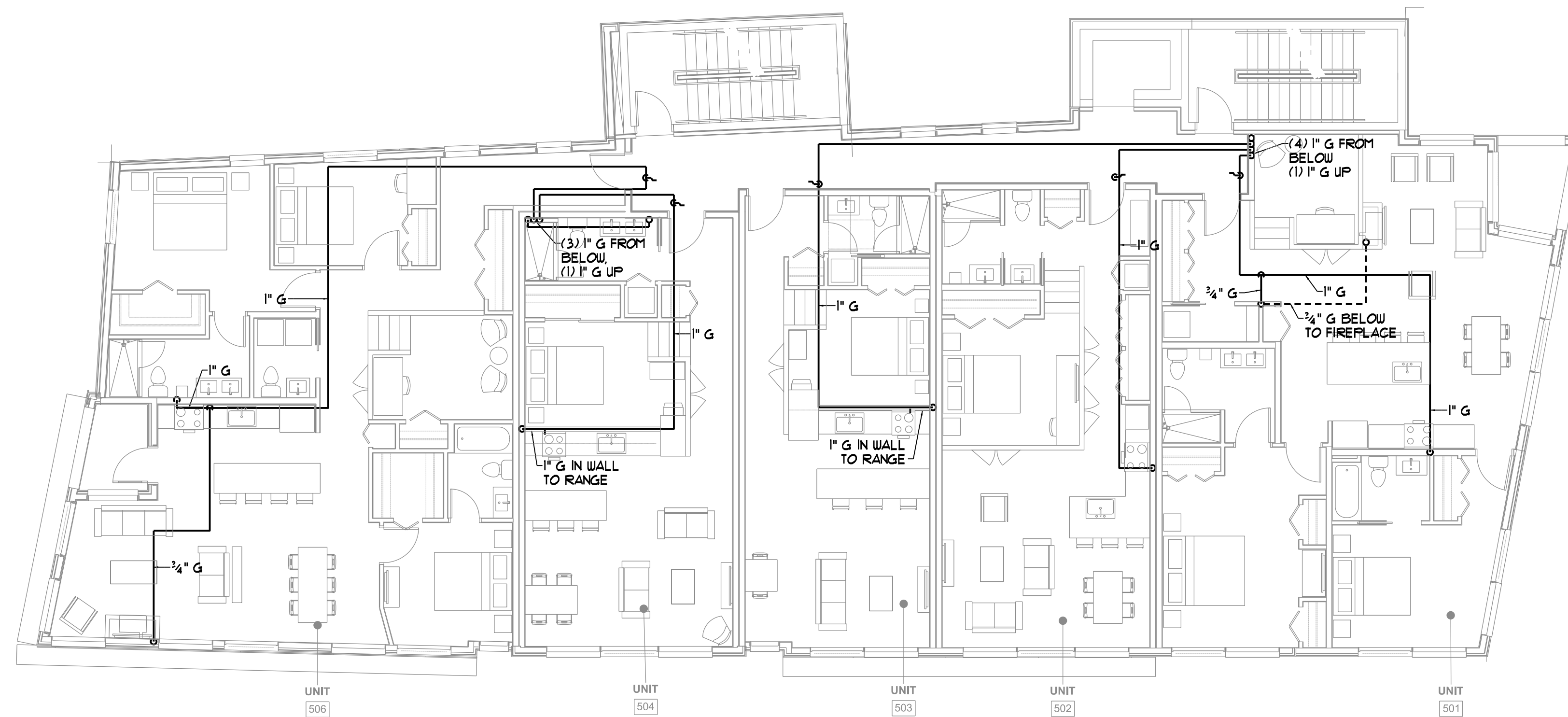
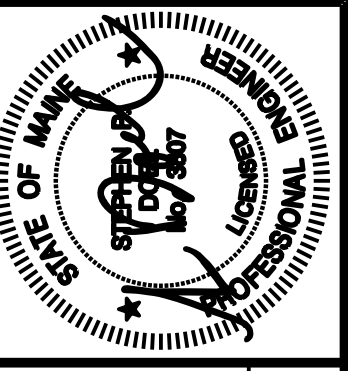


**FOURTH FLOOR GAS PIPING PLAN**  
SCALE - 1/8" = 1'-0"



**FIFTH FLOOR GAS PIPING PLAN**  
SCALE - 1/8" = 1'-0"



Prepared For:  
**NewHeight Group**  
118 Congress Street, Unit 401  
Portland, Maine

Consultant:  
**BENNETT ENGINEERING**  
MECHANICAL - ELECTRICAL  
C07-865-9475

Architect:  
**ARCHETYPE architects**  
48 Union Wharf Portland, Maine 04101  
(207) 772-6027 ARCHETYPE@ARCHETYPEPA.COM

Project:  
**LUMINATO**  
167 Newbury Street Portland, Maine

Revisions:

Date: JUNE 17, 2016  
Scale: As indicated  
**FOURTH & FIFTH FLOOR GAS PIPING PLANS**

**M2.03**