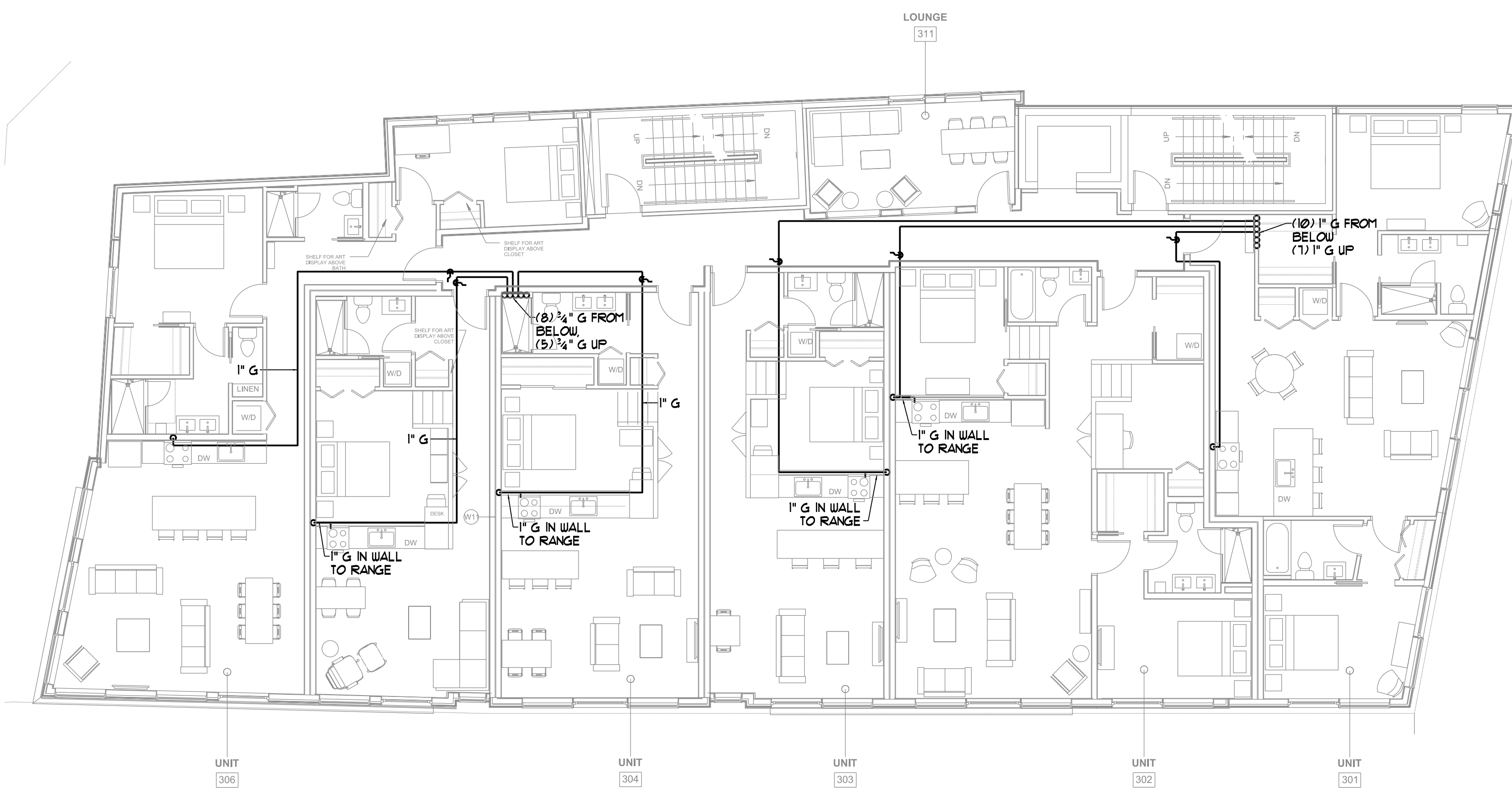
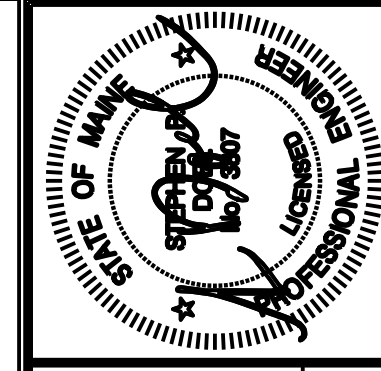


SECOND FLOOR GAS PIPING PLAN
SCALE - 1/8" = 1'-0"



THIRD FLOOR GAS PIPING PLAN
SCALE - 1/8" = 1'-0"



Prepared For:
NewHeight Group
118 Congress Street, Unit 401
Portland, Maine

Consultant:
BENNETT ENGINEERING
MECHANICAL - ELECTRICAL
0270-BE-59475

Architect:
ARCHITECTYPE architects
48 Union Wharf Portland, Maine 04101
(207) 772-6027 ARCHITYPE@ARCHITYPEPA.COM

Project:
LUMINATO
167 Newbury Street Portland, Maine

Revisions:

Date: JUNE 17, 2016
Scale: As indicated
SECOND & THIRD FLOOR GAS PIPING PLANS

M2.02