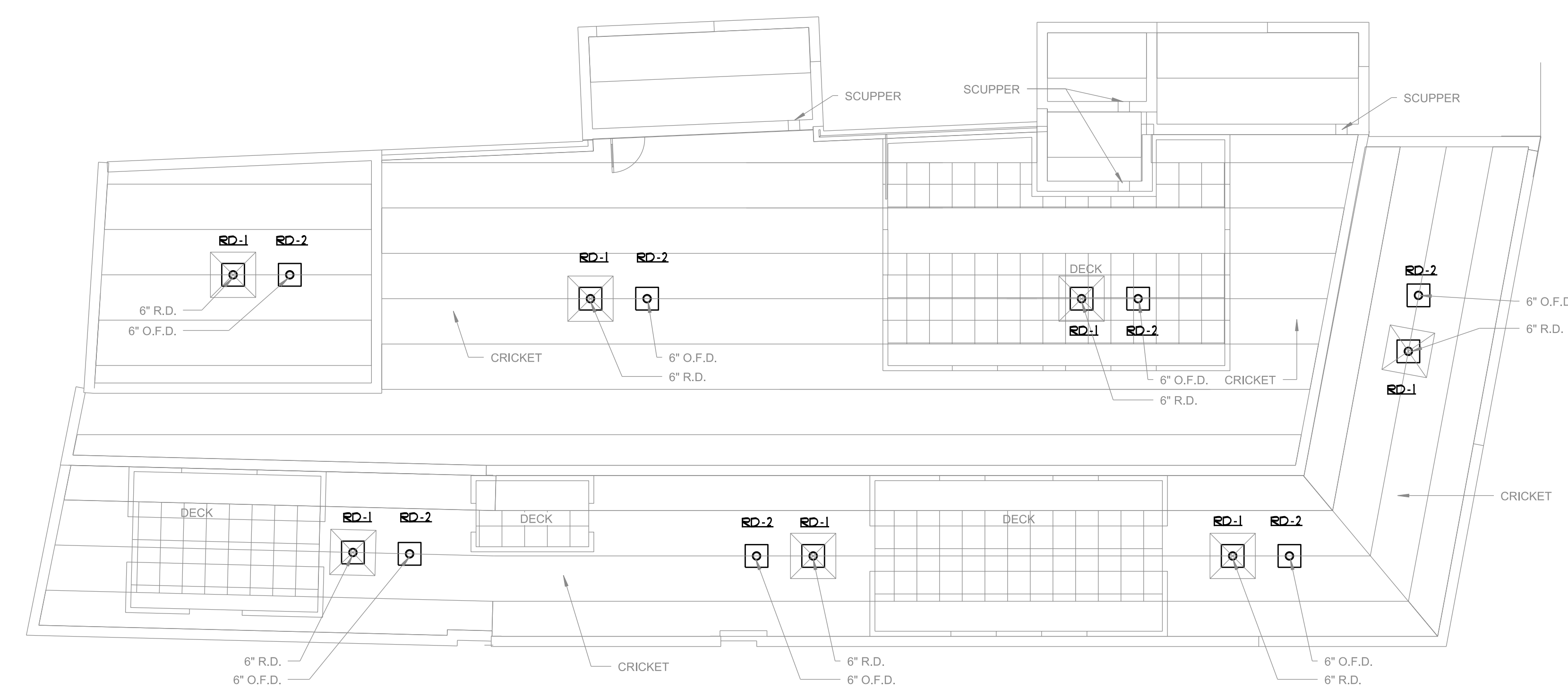


NOTES

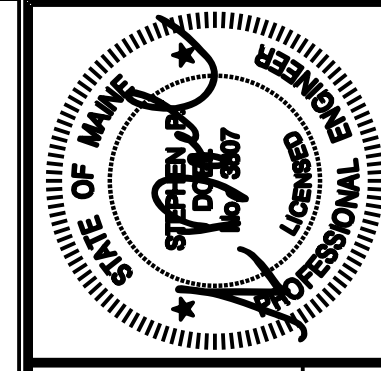
1. BALANCE ALL HOT WATER RECIRC. (RHW) BRANCHES TO 0.5 GPM
2. INSTALL SIZE 'A' WATER HAMMER ARRESTORS UNDER ALL P-4 FIXTURES
3. FIELD ROUTE HEAT PUMP CONDENSATE TO P-2 TAILPIECE. SEE MECHANICAL DRAWINGS FOR HEAT PUMP QUANTITIES AND LOCATIONS

ADD ALTERNATE - FIELD ROUTE 2" CW FROM WATER ENTRANCE IN SPRINKLER ROOM UP TO ROOFTOP IRRIGATION SYSTEM. INSTALL 2" ZURN-WILKINS MODEL 350XL BACKFLOW PREVENTER AND ISOLATION VALVES AT BRANCH TAKEOFF IN SPRINKLER ROOM

SIXTH FLOOR PLUMBING PLAN
SCALE - 1/8" = 1'-0"



ROOF PLUMBING PLAN
SCALE - 1/8" = 1'-0"



Prepared For:
NewHeight Group
118 Congress Street, Unit 401
Portland, Maine

Consultant:
BENNETT ENGINEERING
MECHANICAL - ELECTRICAL
CONSULTANTS
207-865-9475

Architect:
ARCHETYPE architects
48 Union Wharf Portland, Maine 04101
(207) 772-6002 ARCHETYPE@ARCHETYPEPA.COM

Project:
LUMINATO
167 Newbury Street Portland, Maine

Revisions:

Date: JULY 20, 2016
Scale: As indicated
SIXTH FLOOR & ROOF PLUMBING PLANS

M1.04