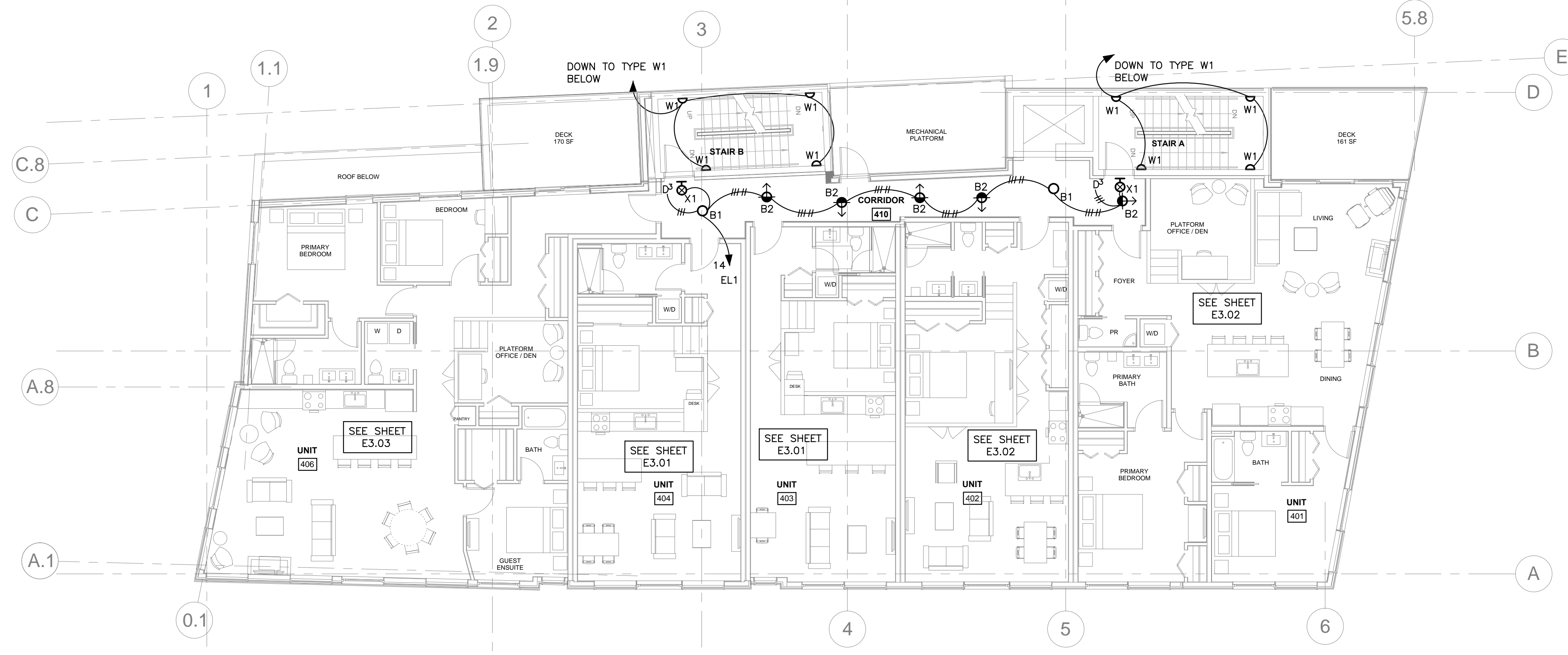


ROUTE CIRCUIT EL1 #16 THROUGH AN EMERGENCY TRANSFER DEVICE (BODINE MODEL # GTD, OR EQUAL) TO ALLOW GENERATOR EMERGENCY SUPPLY REGARDLESS OF DIMMER POSITION.

**2 | FIFTH FLOOR - LIGHTING**  
1/8" = 1'-0"



ROUTE CIRCUIT EL1 #14 THROUGH AN EMERGENCY TRANSFER DEVICE (BODINE MODEL # GTD, OR EQUAL) TO ALLOW GENERATOR EMERGENCY SUPPLY REGARDLESS OF DIMMER POSITION.

**1 | FOURTH FLOOR - LIGHTING**  
1/8" = 1'-0"



**E2.03**

Date: JUNE 17 2016  
Scale: AS NOTED  
FOURTH AND FIFTH FLOOR LIGHTING PLANS

Revisions:  
06/17/16 100% REVIEW SET  
07/22/16 REVISED PLANS

Project: LUMINATO  
Newbury Street Portland, Maine

Architect: ARCHITECTYPE architects  
48 Union Wharf Portland, Maine 04101  
(207) 772-6022 Fax (207) 772-4056

Consultant: Bartlett Design  
ELECTRICAL ENGINEERING  
144 HANCOCK STREET PORTLAND, ME 04101  
TEL: (207) 442-3447 FAX: (207) 442-3000

Prepared For: NewHeight Group

