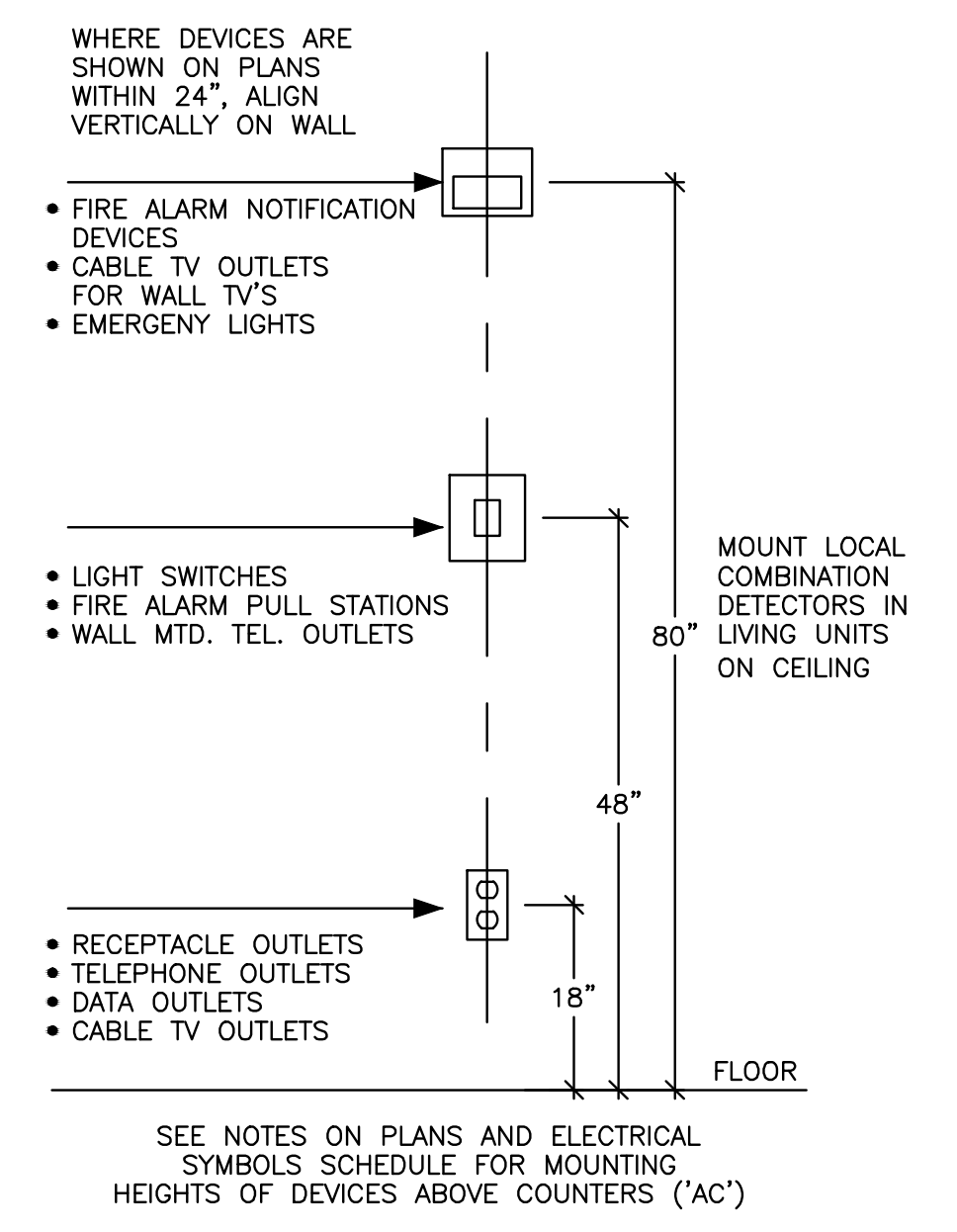


PLAN SYMBOLS

SYMBOL	DESCRIPTION	SYMBOL	DESCRIPTION
	125V, 20A, DUPLEX GROUNDED RECEPTACLE GFI = Ground Fault Type WP = Weatherproof AC = Mount 6" Above Sink or Counter		#2 CEILING MTD. FLUORESCENT LIGHT FIXTURE Circuit Number Fixture Designation
	125V, 20A, QUAD GROUNDED RECEPTACLE		#2 WALL MOUNTED LIGHT FIXTURE Circuit Number Fixture Designation
	250V, SINGLE GROUNDED RECEPTACLE 30A Ampere Rating		#2 RECESSED/CEILING MOUNTED LIGHT FIXTURE Circuit Number Fixture Designation
	SINGLE RJ45 OUTLET		S LIGHT/DEVICE SWITCH 3 = Three-Way Type
	DUPLEX RJ45 OUTLET Wireless Outlet 12" Below Ceiling		D LIGHTING WALL DIMMER
	CABLE TELEVISION OUTLET		ELECTRIC LOAD CENTER/PANELBOARD
	WALL MTD MOTION DETECTOR		
	CEILING MTD MOTION DETECTOR		
	MANUAL MOTOR SWITCH		
	FIRE ALARM SMOKE DETECTOR Indicates Localized Detector		
	FIRE ALARM SMOKE DETECTOR Indicates Localized Detector		
	FIRE ALARM AUDIO VISUAL Indicates Visual Only Candela Rating		
	FIRE ALARM PULL STATION		
	FIRE ALARM HEAT DETECTOR		
	JUNCTION BOX		
	DOOR INTERCOM STATION		
	RECESSED BOX FOR LIVING UNIT CAT5E AND COAX CABLE TERMINATIONS		

SINGLE LINE DIAGRAM SYMBOLS

SYMBOL	DESCRIPTION
	225 AF 200 AT CIRCUIT BREAKER Ampere Frame Rating (3 poles Except as Noted Otherwise) Ampere Trip Rating
	ELECTRICAL CONNECTION
	GROUND CONNECTION
	EQUIPMENT ENCLOSURE
	TRANSFORMER
	200/3 UNFUSED SWITCH No. of Poles Ampere Rating
	UTILITY CO. SERVICE METER

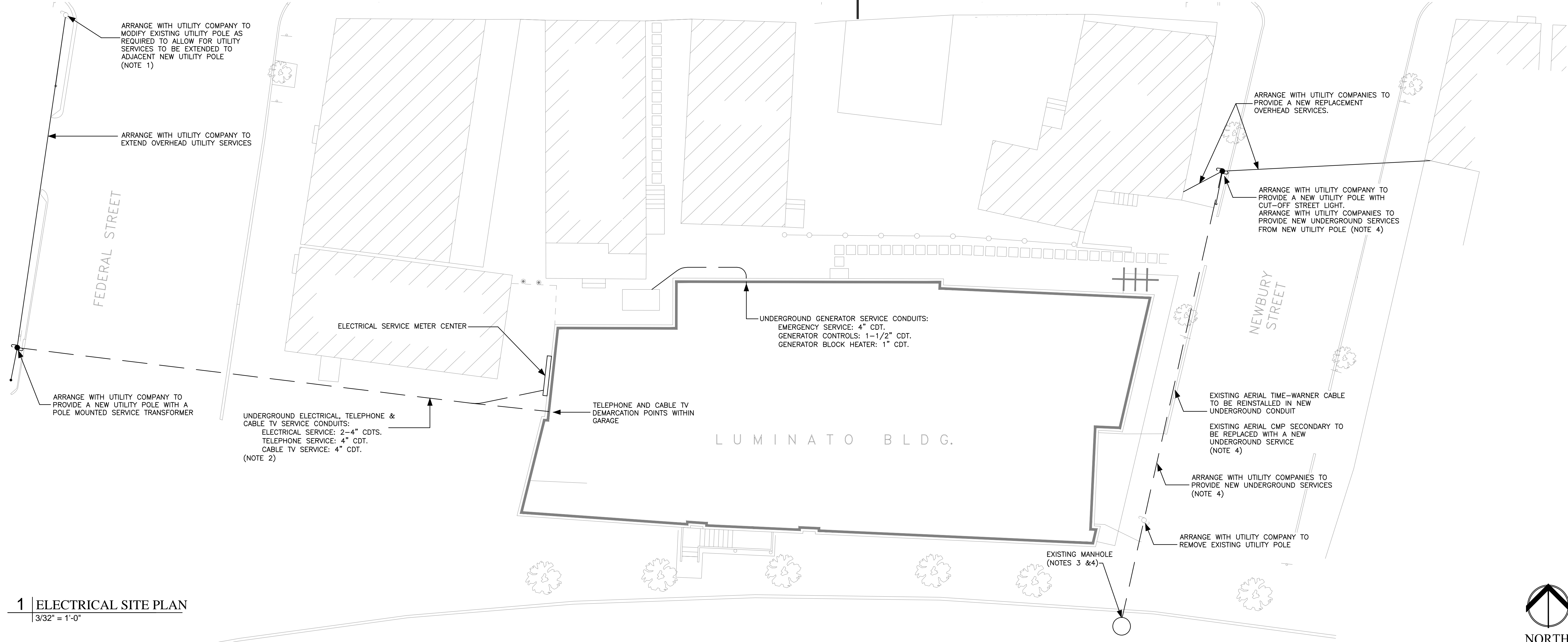


1. PROVIDE STAND-OFF BRACKETS FOR RISER CONDUITS AT NEW UTILITY POLE ON FEDERAL STREET.
2. PROVIDE 3" CONCRETE ENVELOPE FOR UNDERGROUND SERVICE CONDUITS CROSSING FEDERAL STREET.
3. ARRANGE WITH UTILITY COMPANY TO SPLICE EXISTING SECONDARY ELECTRICAL CONDUCTORS THAT EXTEND ALONG FRANKLIN ARTERIAL TO NEW UNDERGROUND SECONDARY ELECTRICAL CONDUCTORS FROM NEW RISER POLE.
4. WHERE INDICATED, ARRANGE WITH CMP AND TIME-WARNER TO PROVIDE THE FOLLOWING UNDERGROUND SERVICE EXTENSIONS:
 - CMP: THE CONTRACTOR SHALL PROVIDE A 4" CONDUIT RISER AT THE NEW UTILITY POLE BEING INSTALLED ON NEWBURY STREET AND SHALL PROVIDE A 4" CONDUIT UNDERGROUND FROM THE RISER TO AN EXISTING MANHOLE LOCATED AT THE END OF NEWBURY STREET AT THE FRANKLIN ARTERIAL. THE CONTRACTOR SHALL PROVIDE NEW SERVICE CONDUCTORS FROM THE RISER TO THE MANHOLE TO MATCH THE EXISTING CONDUCTORS BEING REMOVED BETWEEN THE EXISTING UTILITY POLE BEING ELIMINATED AND THE MANHOLE. CMP SHALL MAKE A SPLICE CONNECTION WITHIN THE MANHOLE.
 - TIME-WARNER: THE CONTRACTOR SHALL PROVIDE A 3" CONDUIT RISER AT THE NEW UTILITY POLE BEING INSTALLED ON NEWBURY STREET AND SHALL PROVIDE A 3" CONDUIT UNDERGROUND TO CONNECT TO THE EXISTING UNDERGROUND CONDUIT AT THE UTILITY POLE BEING ELIMINATED. ARRANGE WITH TIME-WARNER TO REINSTALL THE EXISTING AERIAL SERVICE CABLE WITHIN THE NEW UNDERGROUND CONDUIT.

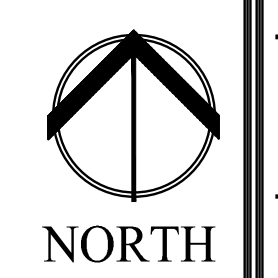
2 ELECTRICAL SYMBOLS

3 DEVICE ALIGNMENT DETAIL

4 DRAWING NOTES



1 ELECTRICAL SITE PLAN
3/32" = 1'-0"



STATE OF MAINE
LICENSED ELECTRICAL ENGINEER
Lawrence C. Bartlett
No. 7928
7/20/16

Prepared For: **NewHeight Group**

Consultant: **Bartlett Design**
144 Union Wharf, Portland, Maine 04101
TEL: (207) 443-3447 FAX: (207) 443-3000

Architect: **ARCHITYPE Architects**
48 Union Wharf, Portland, Maine 04101
(207) 772-6022 Fax (207) 772-4056

Project: **LUMINATO**
Newbury Street, Portland, Maine

Revisions:
06/17/16 100% REVIEW SET
07/22/16 REVISED PLANS

Date: **JUNE 17 2016**
Scale: **AS NOTED**

ELECTRICAL SITE PLAN

E0.01