

Prepared For:
NewHeight Group
 118 Congress Street #401
 Portland, Maine

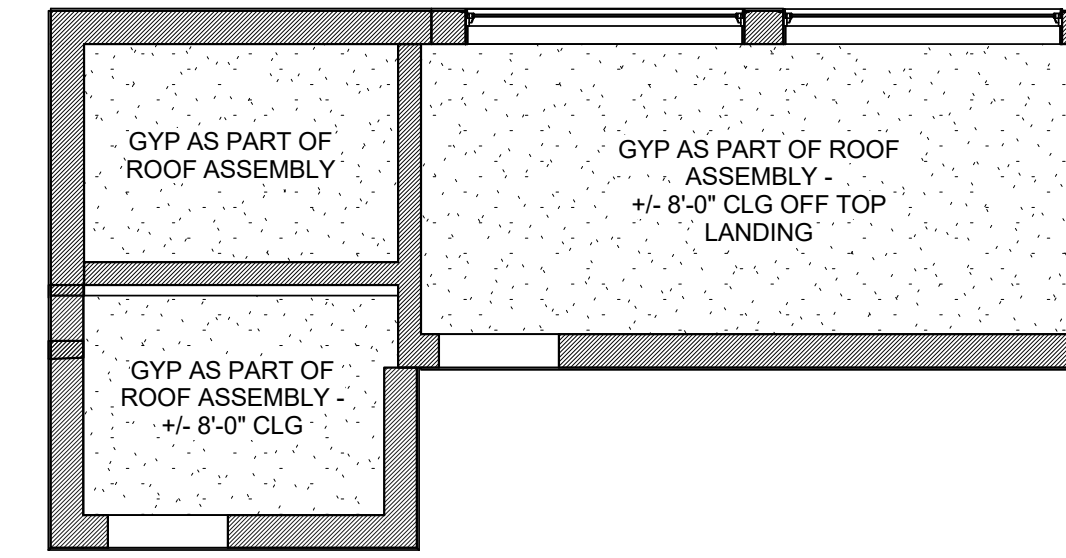
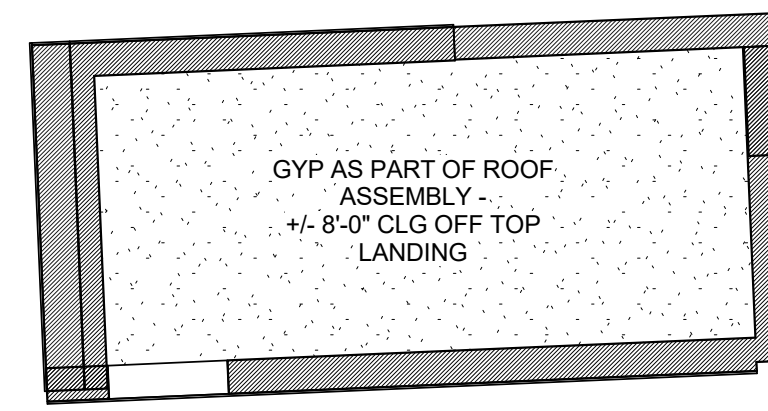
Consultant:
ARCHETYPE
 architects
 48 Union Wharf Portland, Maine 04101
 (207) 772-6022 ARCHETYPE@ARCHETYPEPA.COM

Project:
LUMINATO
 167 Newbury Street Portland, Maine

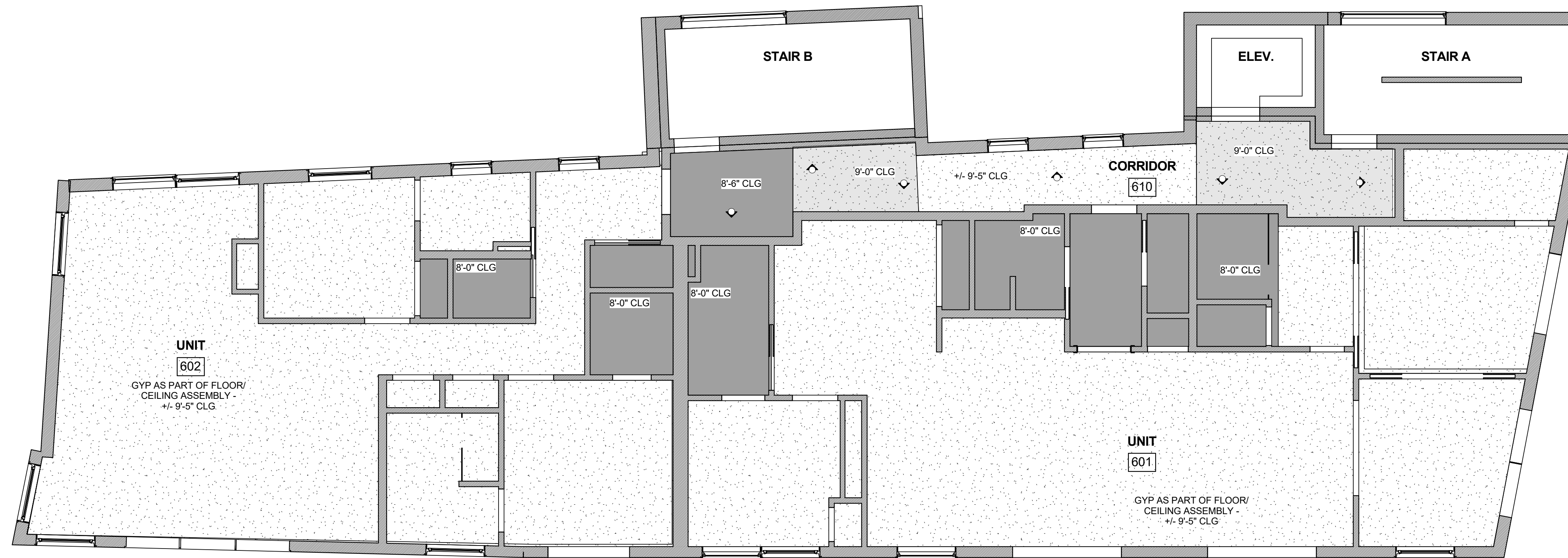
Revisions:
 Scale: As indicated
 Date: JULY 21, 2016

RCP - 6TH FLOOR

A7.06



2 | ROOF REFLECTED CEILING PLAN
 3/16" = 1'-0" 0 2'-0" 4'-0" 8'-0" 16'-0"



REFER TO ELECTRICAL PLANS FOR LIGHTING LAYOUTS

1 | 6TH FLOOR REFLECTED CEILING PLAN
 3/16" = 1'-0" 0 2'-0" 4'-0" 8'-0" 16'-0"

GENERAL NOTE:

1. ARCHITECTURAL CEILING PLANS DO NOT SHOW ALL PROJECT LIGHTS. SEE LIFE SAFETY PLANS FOR LIFE SAFETY FIXTURES AND ELECTRICAL PLANS FOR ADDITIONAL FIXTURES.
2. LIGHTS OR CEILING ELEMENTS NOT DIMENSIONED AND GRAPHICALLY SHOWN AS CENTERED IN A SPACE OR CENTERED ON A WALL OR ELEMENT ARE TO BE LOCATED CENTERED IN THAT SPACE OR ON THAT ELEMENT.
3. PROVIDE FULL LENGTH UNDERCOUNTER LIGHTS FOR ALL PROJECT UPPERS
4. CENTER VANITY SCONES ABOVE VANITIES U.N.O.
5. TRACK LIGHTING LOCATION WITHIN UNITS - WHEN LOCATED ALONG A LENGTH OF WALL AND NOT DIMENSIONED OTHERWISE HOLD TRACK LIGHTING AND WALL WASHERS 2'-0" OFF OF WALL SURFACE.
6. IN UNITS WHERE A FIREPLACE IS SELECTED CENTER TRACK LIGHTING ON FIREPLACE. CONTRACTOR TO CONFIRM WITH ARCHITECT PRIOR TO PURCHASE/ INSTALLATION
7. HOODS ARE TO BE CENTERED ABOVE RANGES. CONTRACTOR TO VERIFY RANGE AND HOOD LOCATIONS AS DIMENSIONED.
8. SEE ELECTRICAL DRAWINGS FOR FIXTURE TYPE.
9. PROVIDE CLOSET LIGHTING AS NOTED IN ELECTRICAL DRAWINGS.

RCP LEGEND

- FIR T&G CEILING
- GYPSUM CEILING - SEE FLOOR ASSEMBLY FOR HEIGHT OFF DECK
- GYPSUM CEILING - 9'-0" A.F.F.
- GYPSUM CEILING - 8'-6" A.F.F.
- LIGHT FIXTURE - ABOVE/UNDER CABINET LIGHTING
- LIGHT FIXTURE - JUNCTION BOX (TRACK OPTION)
- LIGHT FIXTURE - SURFACE MOUNTED
- LIGHT FIXTURE - WALL SCONCE
- LIGHT FIXTURE - RECESSED LIGHT
- JUNCTION BOX