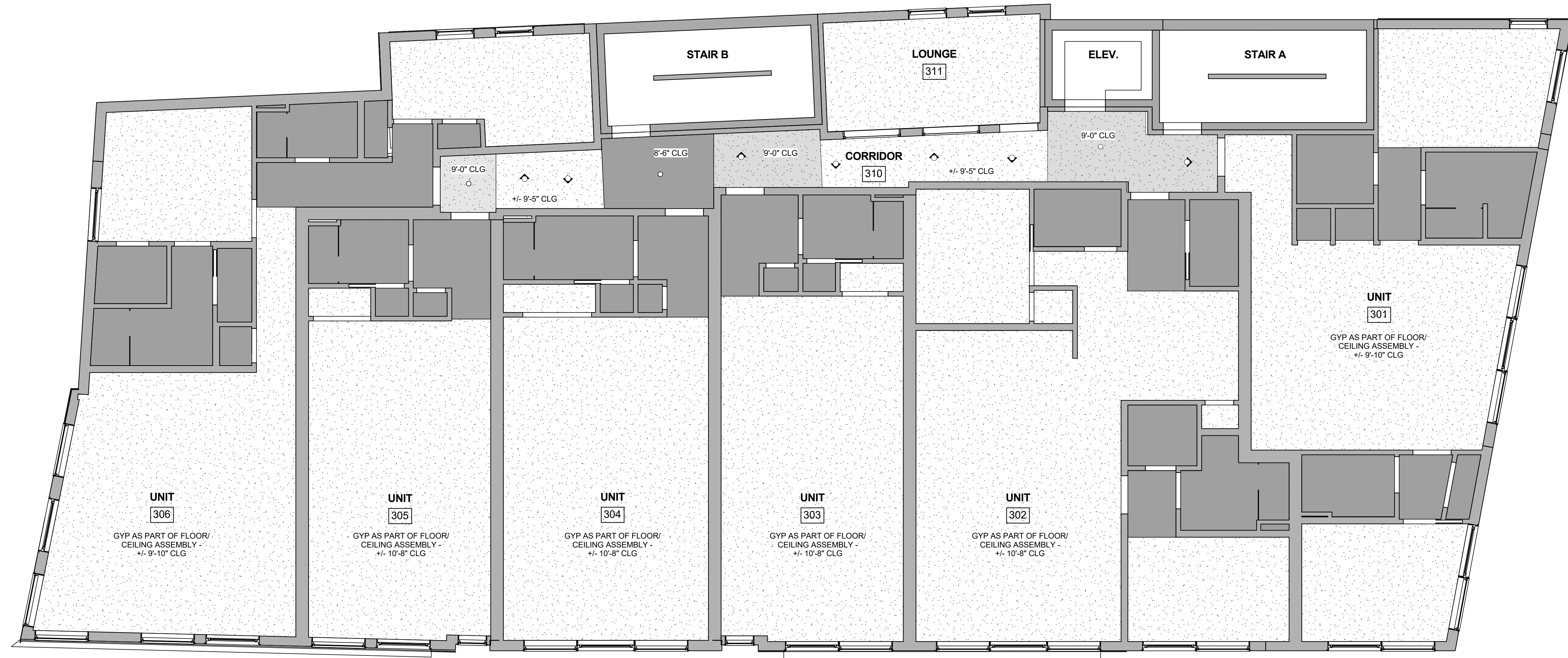


Prepared For:
NewHeight Group
 118 Congress Street #401
 Portland, Maine

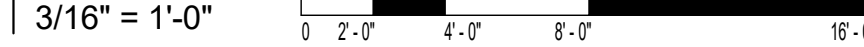
Consultant:
ARCHETYPE architects
 48 Union Wharf Portland, Maine 04101
 (207) 772-6022 ARCHETYPE@ARCHETYPEPA.COM

Architect:
LUMINATO
 167 Newbury Street Portland, Maine



REFER TO ELECTRICAL PLANS FOR LIGHTING LAYOUTS

1 | 3RD FLOOR REFLECTED CEILING PLAN
 3/16" = 1'-0"



GENERAL NOTE:

1. ARCHITECTURAL CEILING PLANS DO NOT SHOW ALL PROJECT LIGHTS. SEE LIFE SAFETY PLANS FOR LIFE SAFETY FIXTURES AND ELECTRICAL PLANS FOR ADDITIONAL FIXTURES.
2. LIGHTS OR CEILING ELEMENTS NOT DIMENSIONED AND GRAPHICALLY SHOWN AS CENTERED IN A SPACE OR CENTERED ON A WALL OR ELEMENT ARE TO BE LOCATED CENTERED IN THAT SPACE OR ON THAT ELEMENT.
3. PROVIDE FULL LENGTH UNDERCOUNTER LIGHTS FOR ALL PROJECT UPPERS
4. CENTER VANITY SCONCES ABOVE VANITIES U.N.O.
5. TRACK LIGHTING LOCATION WITHIN UNITS - WHEN LOCATED ALONG A LENGTH OF WALL AND NOT DIMENSIONED OTHERWISE HOLD TRACK LIGHTING AND WALL WASHERS 2'-0" OFF OF WALL SURFACE.
6. IN UNITS WHERE A FIREPLACE IS SELECTED CENTER TRACK LIGHTING ON FIREPLACE. CONTRACTOR TO CONFIRM WITH ARCHITECT PRIOR TO PURCHASE/ INSTALLATION
7. HOODS ARE TO BE CENTERED ABOVE RANGES. CONTRACTOR TO VERIFY RANGE AND HOOD LOCATIONS AS DIMENSIONED.
8. SEE ELECTRICAL DRAWINGS FOR FIXTURE TYPE.
9. PROVIDE CLOSET LIGHTING AS NOTED IN ELECTRICAL DRAWINGS.

RCP LEGEND

- FIR T&G CEILING
- GYPSUM CEILING - SEE FLOOR ASSEMBLY FOR HEIGHT OFF DECK
- GYPSUM CEILING - 9'-0" A.F.F.
- GYPSUM CEILING - 8'-6" A.F.F.
- LIGHT FIXTURE - ABOVE/UNDER CABINET LIGHTING
- LIGHT FIXTURE - JUNCTION BOX (TRACK OPTION)
- LIGHT FIXTURE - SURFACE MOUNTED
- LIGHT FIXTURE - WALL SCONCE
- LIGHT FIXTURE - RECESSED LIGHT
- JUNCTION BOX

Date: JULY 21, 2016
 Scale: As indicated

RCP - 3RD FLOOR

A7.03