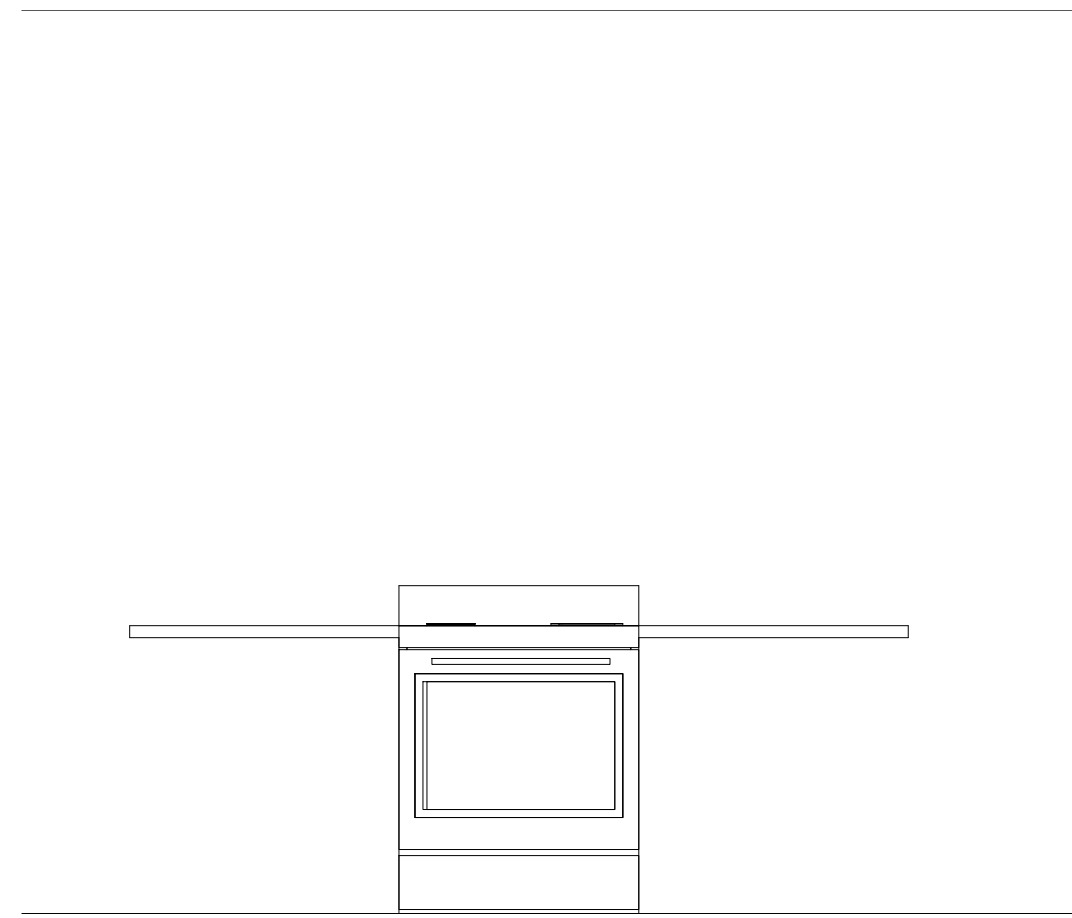


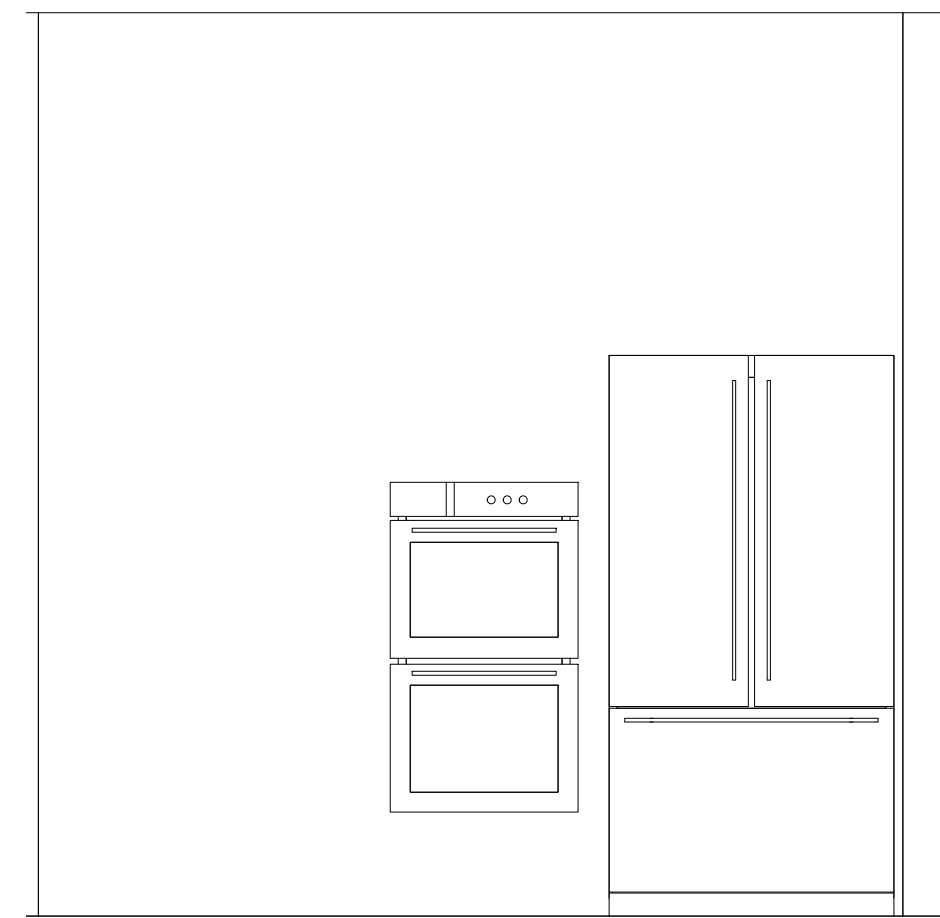
2 | UNIT 601 KITCHEN ELEV. A

1/2" = 1'-0" 0 0'-6" 1'-0" 2'-0" 4'-0"



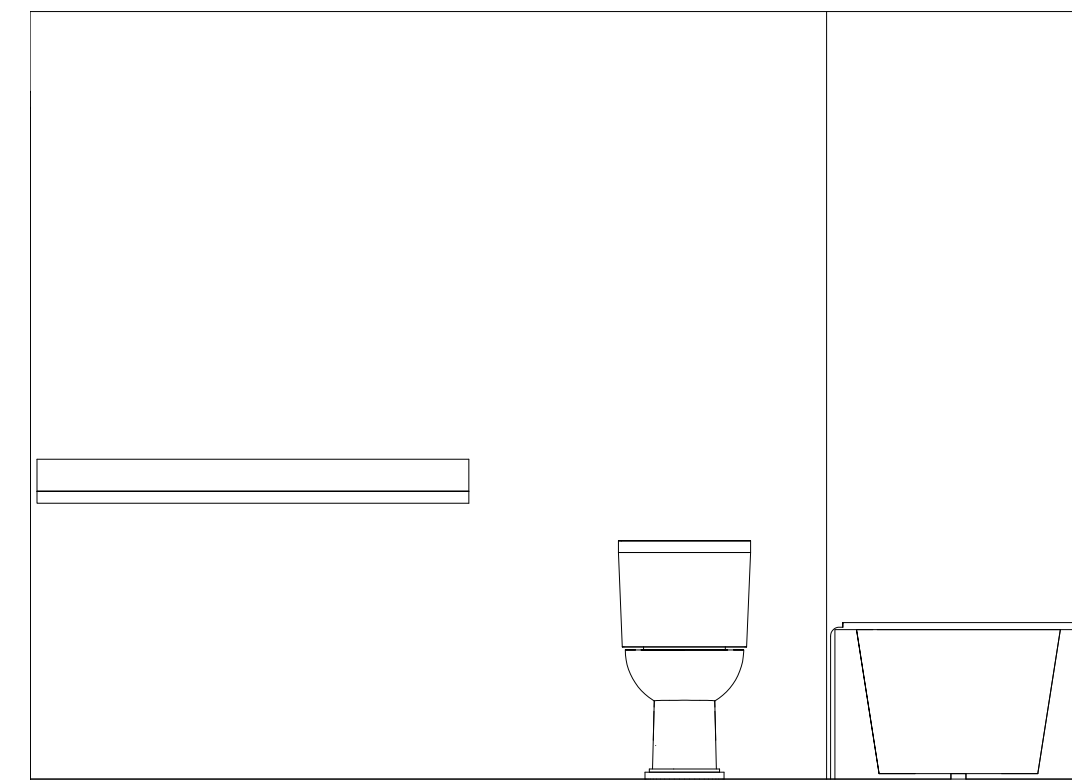
3 | UNIT 601 KITCHEN ELEV. B

1/2" = 1'-0" 0 0'-6" 1'-0" 2'-0" 4'-0"



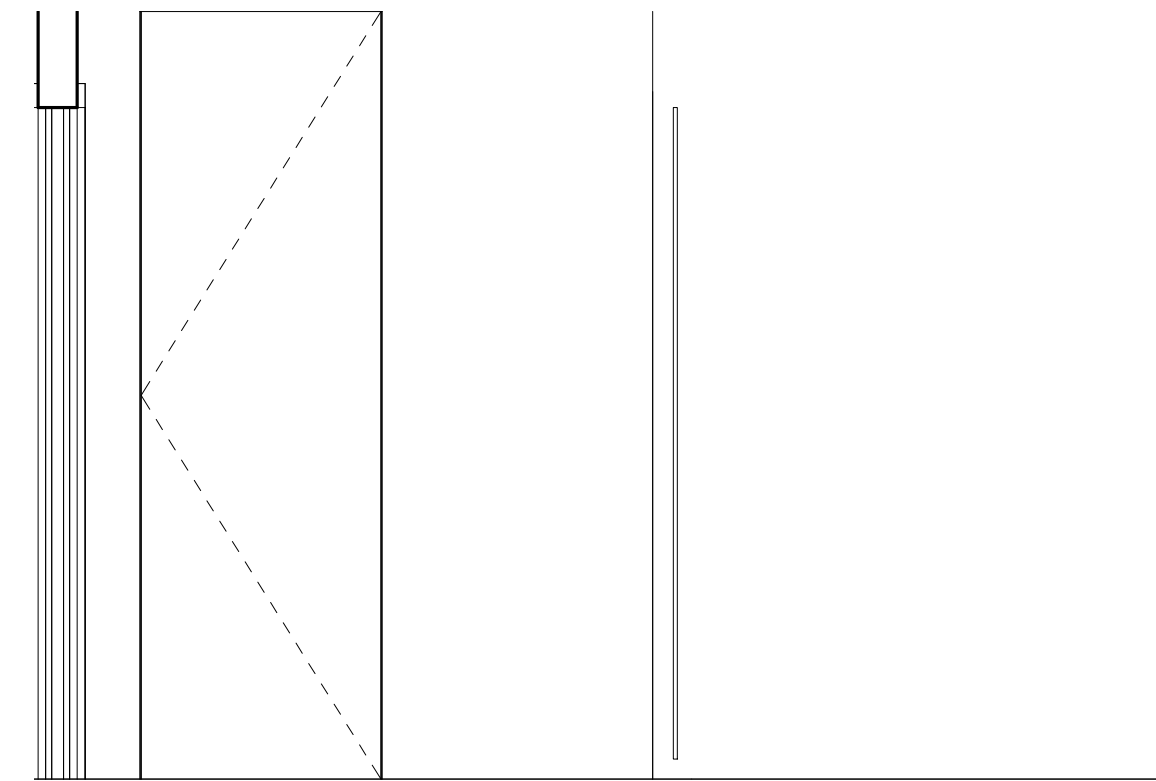
4 | UNIT 601 KITCHEN ELEV. C

1/2" = 1'-0" 0 0'-6" 1'-0" 2'-0" 4'-0"



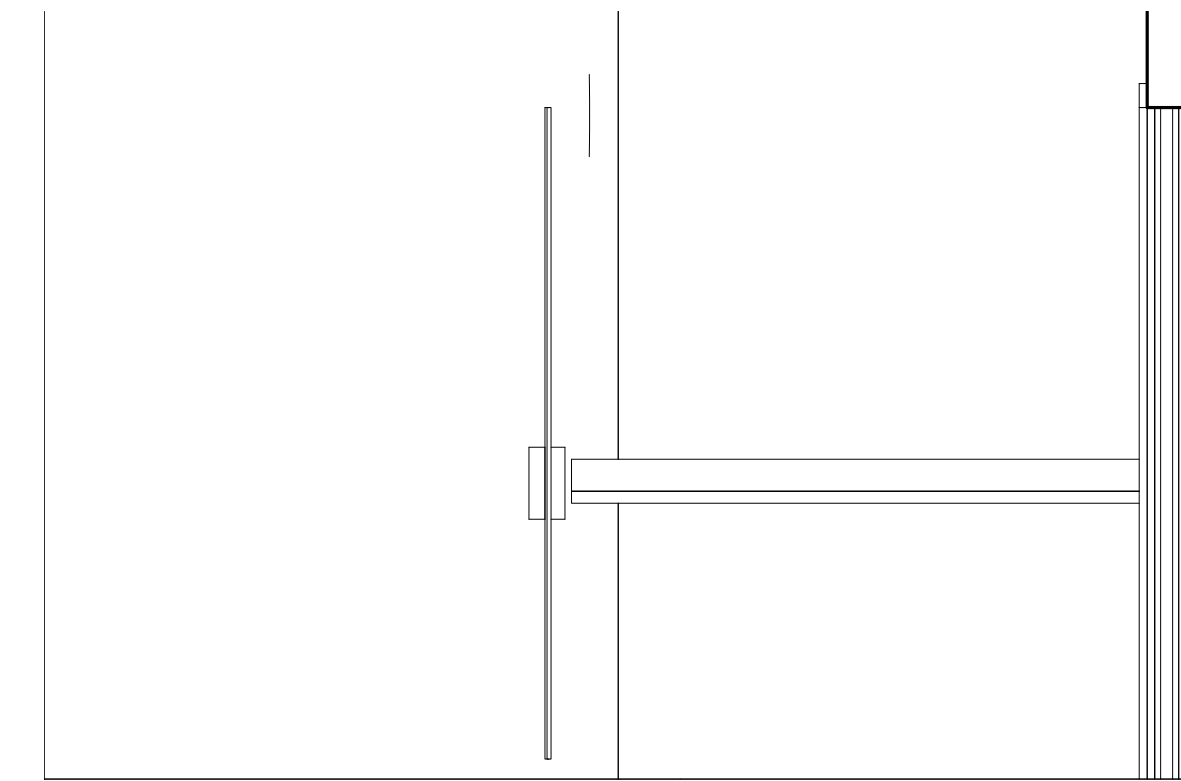
5 | UNIT 601 BATH ELEV. A

1/2" = 1'-0" 0 0'-6" 1'-0" 2'-0" 4'-0"



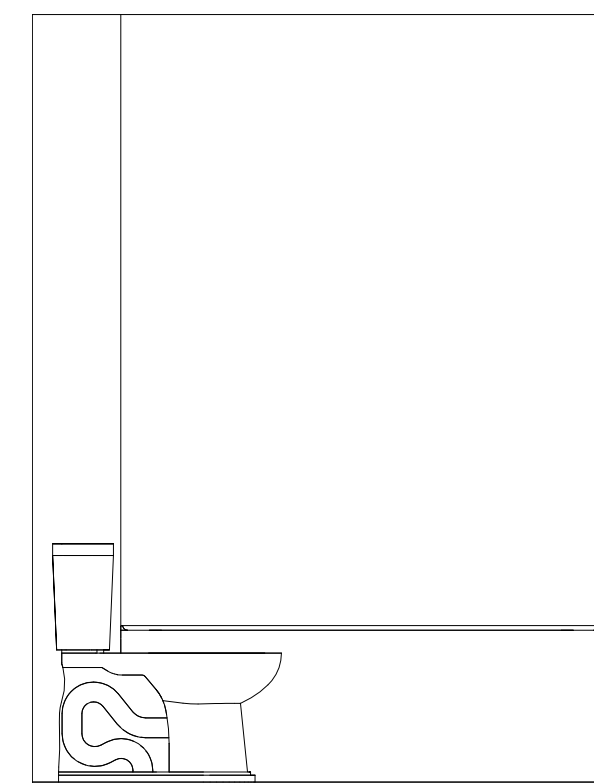
7 | UNIT 601 BATH 2 ELEV. A

1/2" = 1'-0" 0 0'-6" 1'-0" 2'-0" 4'-0"



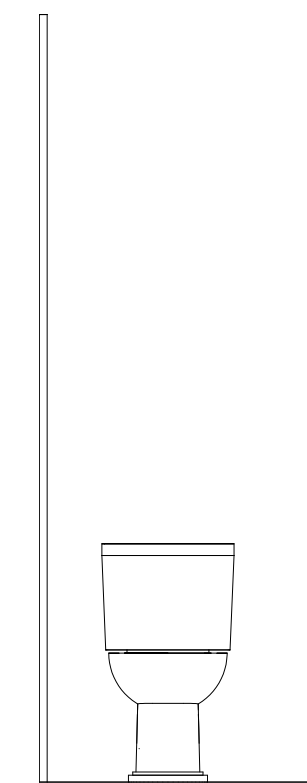
8 | UNIT 601 BATH 2 ELEV. B

1/2" = 1'-0" 0 0'-6" 1'-0" 2'-0" 4'-0"



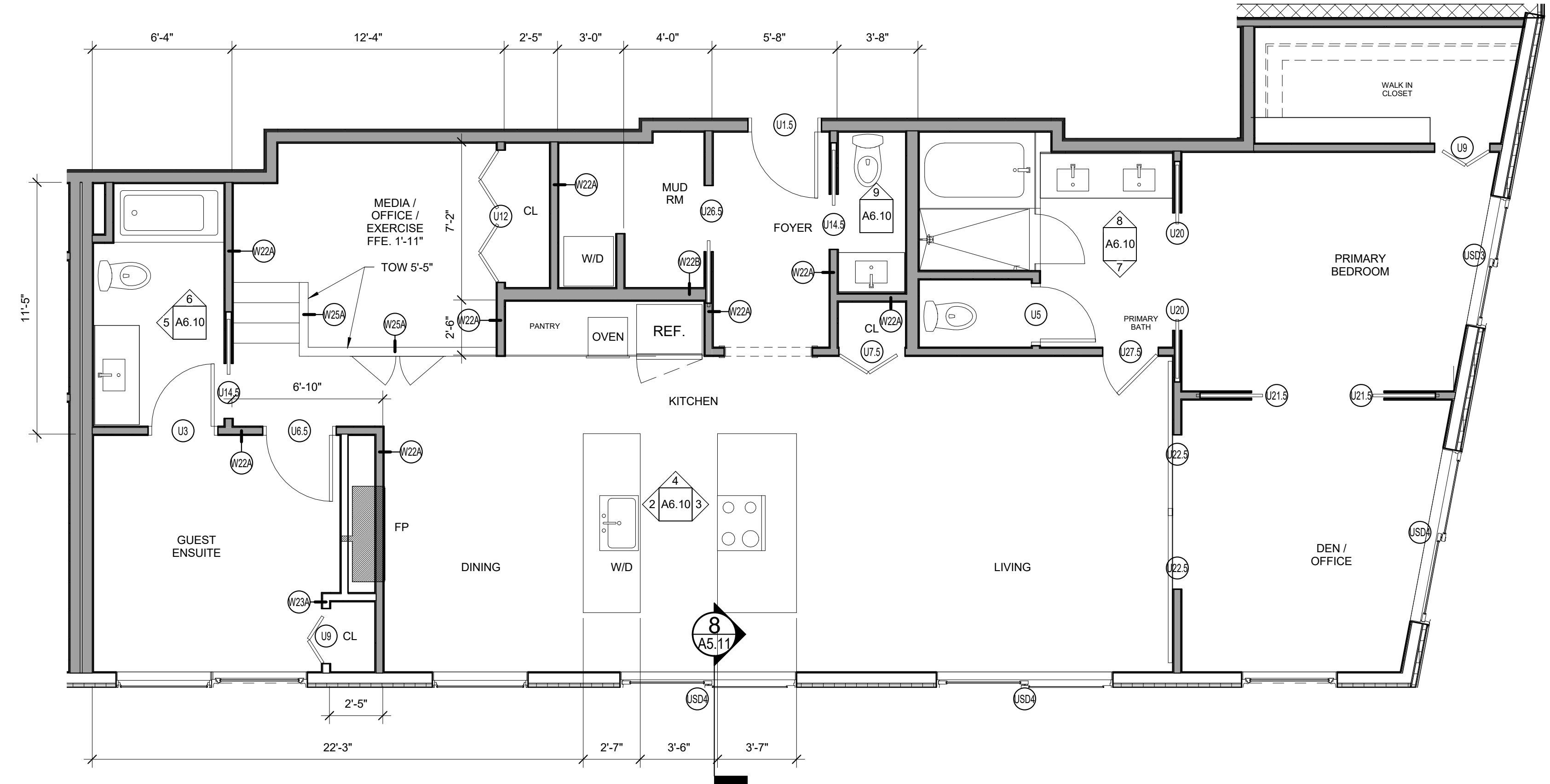
6 | UNIT 601 BATH ELEV. B

1/2" = 1'-0" 0 0'-6" 1'-0" 2'-0" 4'-0"



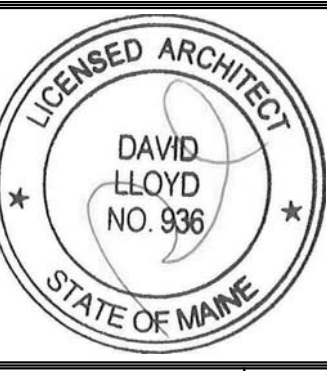
9 | UNIT 601 BATH 3 ELEV.

1/2" = 1'-0" 0 0'-6" 1'-0" 2'-0" 4'-0"



1 | ENLARGED PLAN - UNIT 601

1/4" = 1'-0" 0 1'-0" 2'-0" 4'-0" 8'-0"



Prepared For:
NewHeight Group

Consultant:



Architect:

Project:
LUMINATO

167 Newbury Street Portland, Maine

Revisions:

Date: JULY 21, 2016
Scale: As indicated

ENL. PLAN, INT. ELEV.
UNIT 601

A6.10