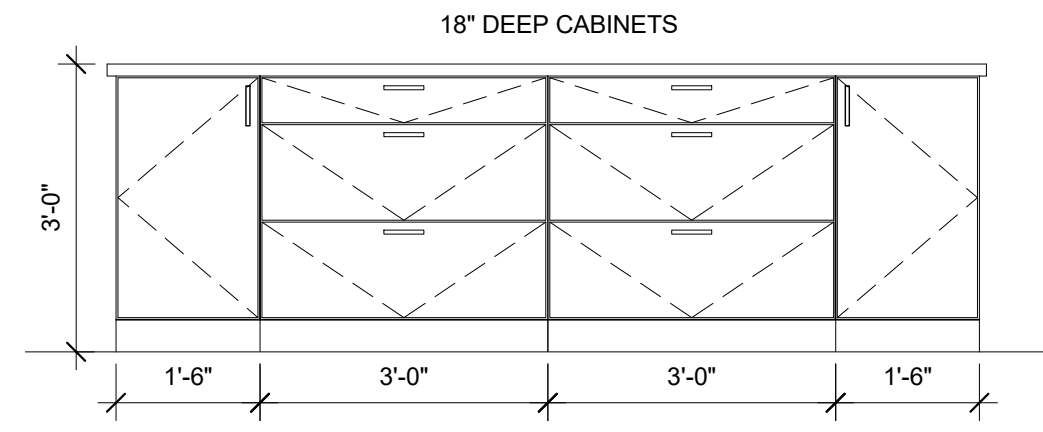


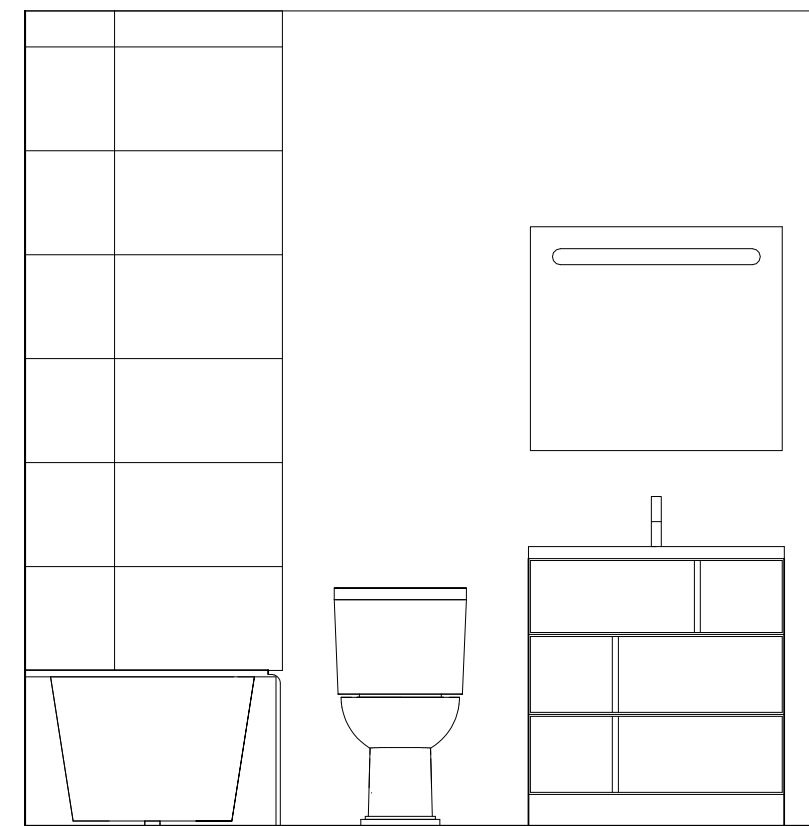
2 | UNIT 506 KITCHEN ELEV. A

1/2" = 1'-0" 0 0'-6" 1'-0" 2'-0" 4'-0"



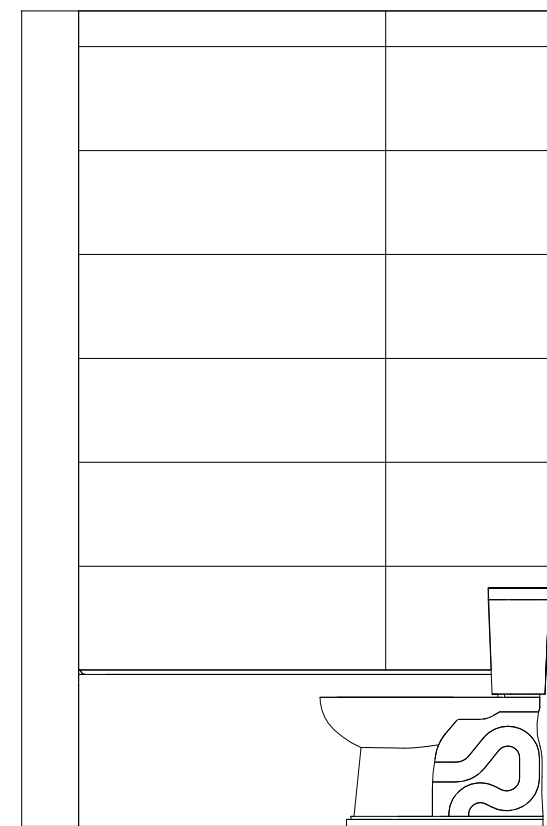
3 | UNIT 506 KITCHEN ELEVATION B

1/2" = 1'-0" 0 0'-6" 1'-0" 2'-0" 4'-0"



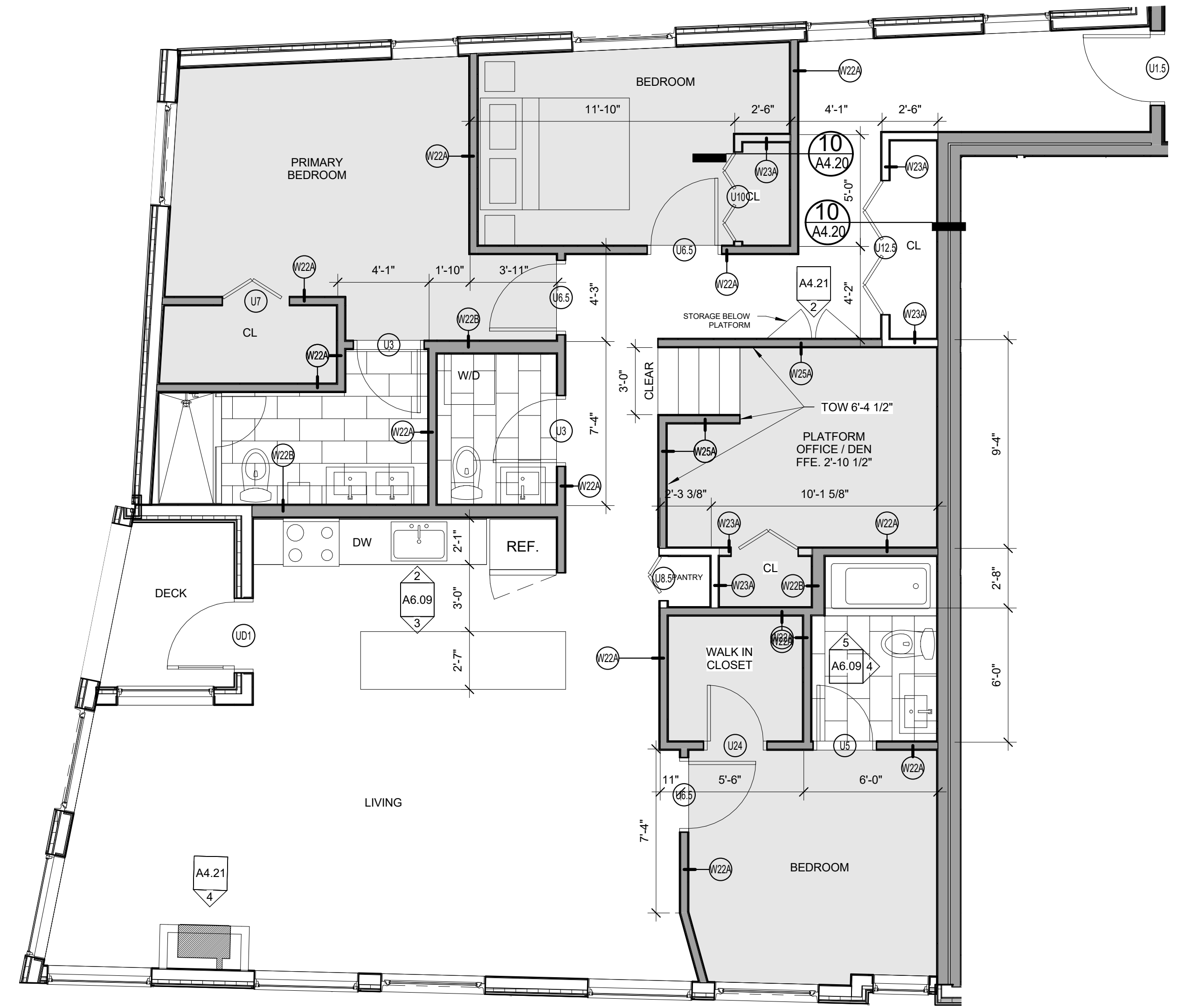
4 | UNIT 506 BATH ELEV. A

1/2" = 1'-0" 0 0'-6" 1'-0" 2'-0" 4'-0"



5 | UNIT 506 BATH ELEV. B

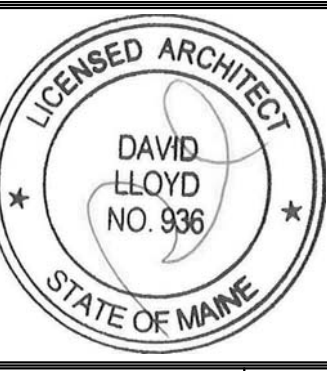
1/2" = 1'-0" 0 0'-6" 1'-0" 2'-0" 4'-0"



1 | ENLARGED PLAN - UNIT 506

1/4" = 1'-0" 0 1'-0" 2'-0" 4'-0" 8'-0"

	12" x 24" RUNNING BOND TILE	NOTES: CLOSETS TO BE LEFT EMPTY-NO SHELF OR ROD TO BE INSTALLED REFER TO SPECIFICATIONS FOR ALL FINISH SELECTIONS
	BROADLOOM CARPET	
	WOOD FLOOR	



Prepared For:
NewHeight Group

Consultant:

Architect:
ARCHETYPE
architects
48 Union Wharf Portland, Maine 04101
(207) 772-6022 Fax (207) 772-4056

Project:

LUMINATO
167 Newbury Street Portland, Maine

Revisions:

Date:

JULY 21, 2016
Scale: As indicated
ENL. PLAN, INT. ELEV.
UNIT 506

A6.09