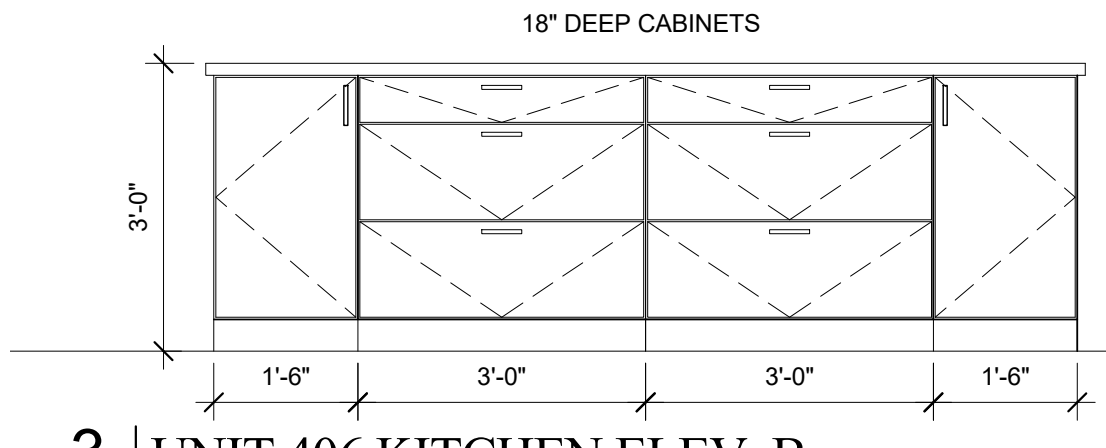
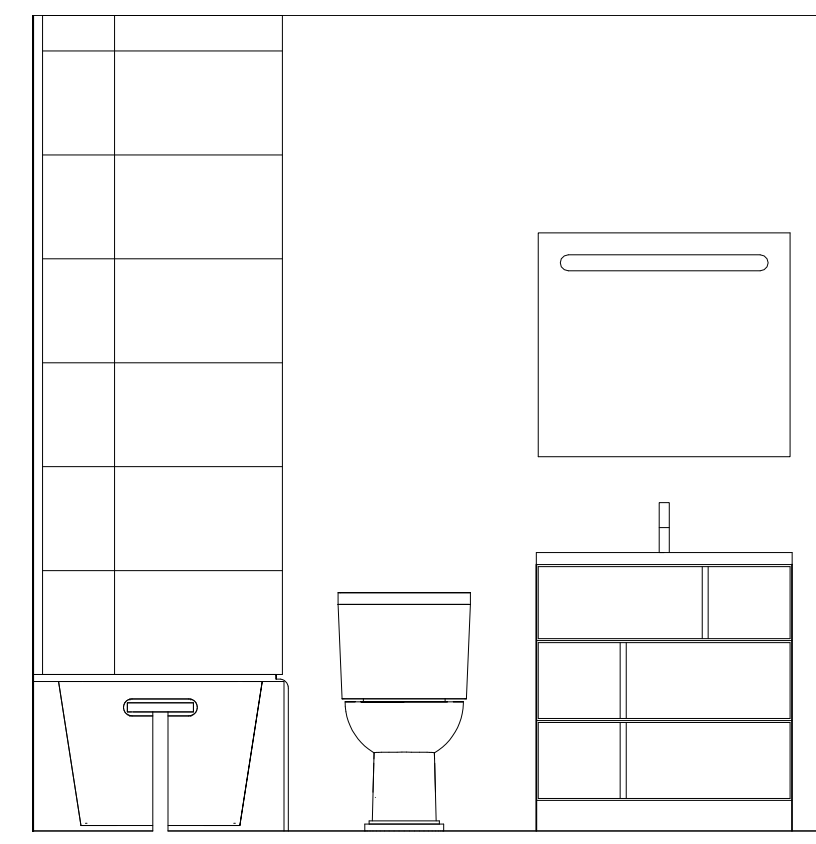


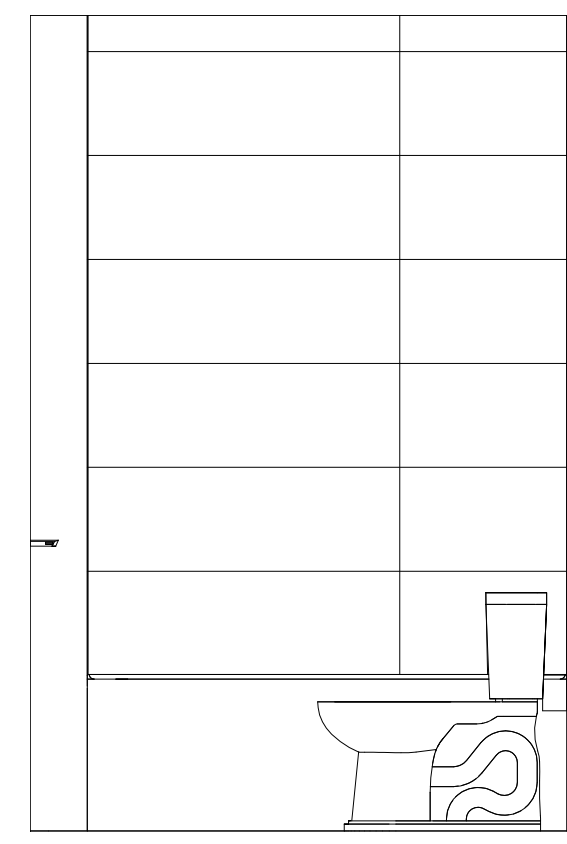
**2** UNIT 406 KITCHEN ELEV. A  
1/2" = 1'-0"



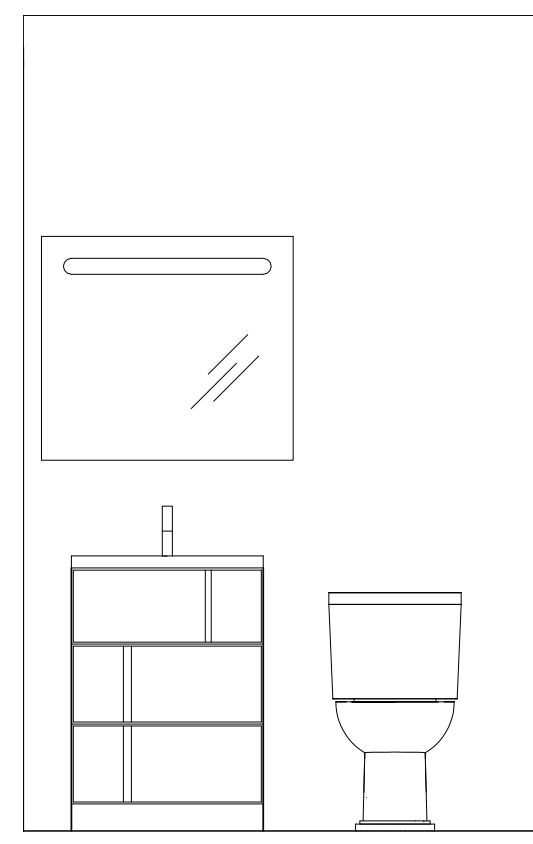
**3** UNIT 406 KITCHEN ELEV. B  
1/2" = 1'-0"



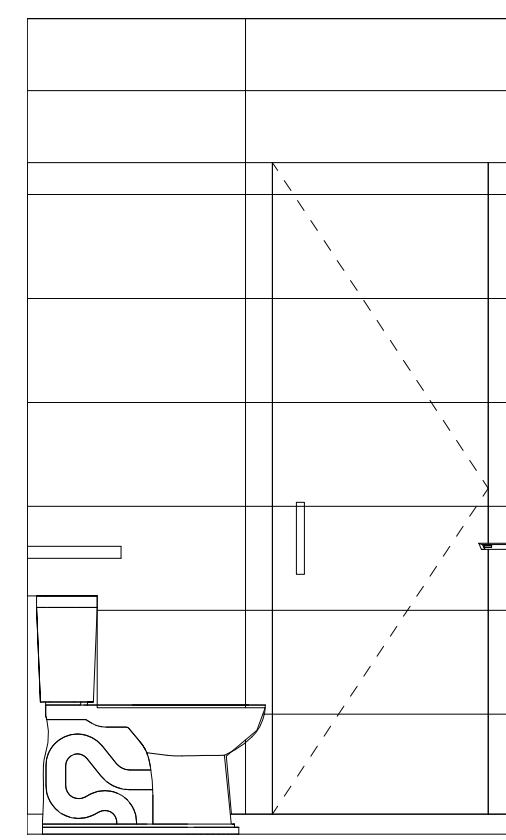
**4** UNIT 406 BATH ELEV. A  
1/2" = 1'-0"



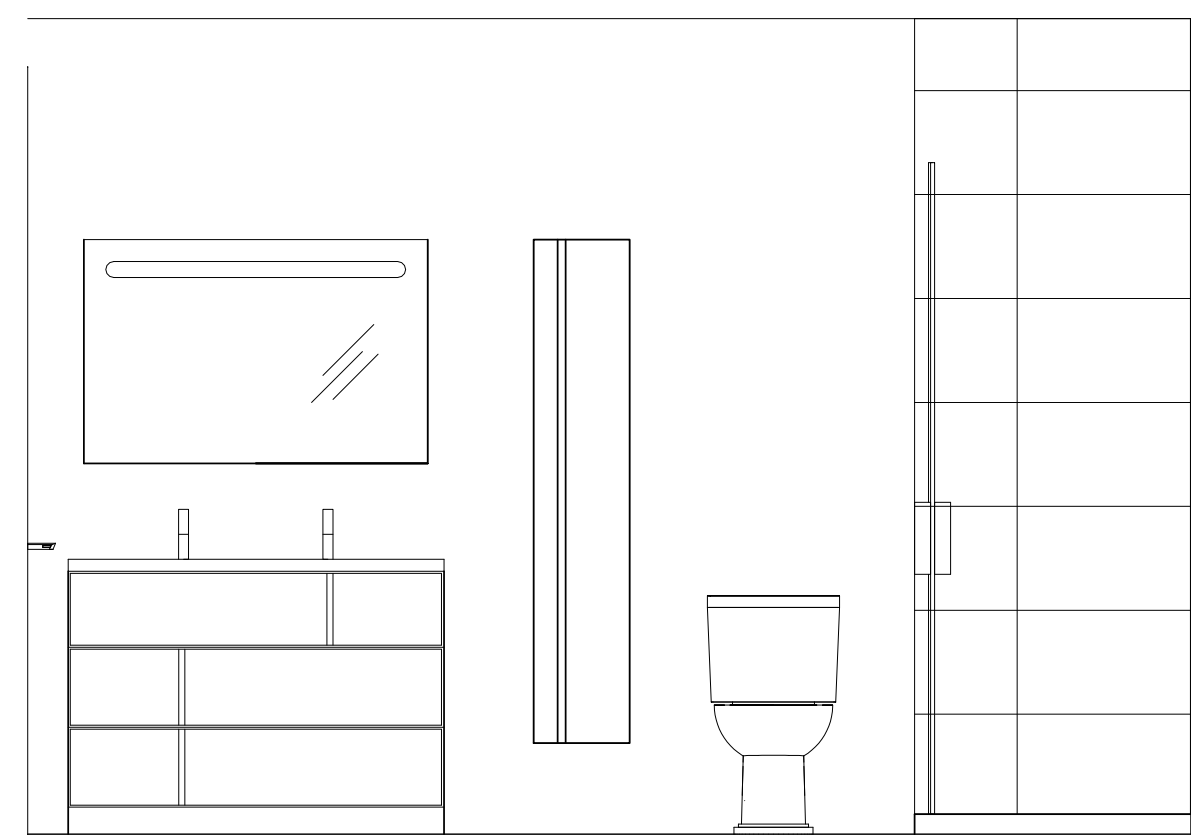
**5** UNIT 406 BATH ELEV. B  
1/2" = 1'-0"



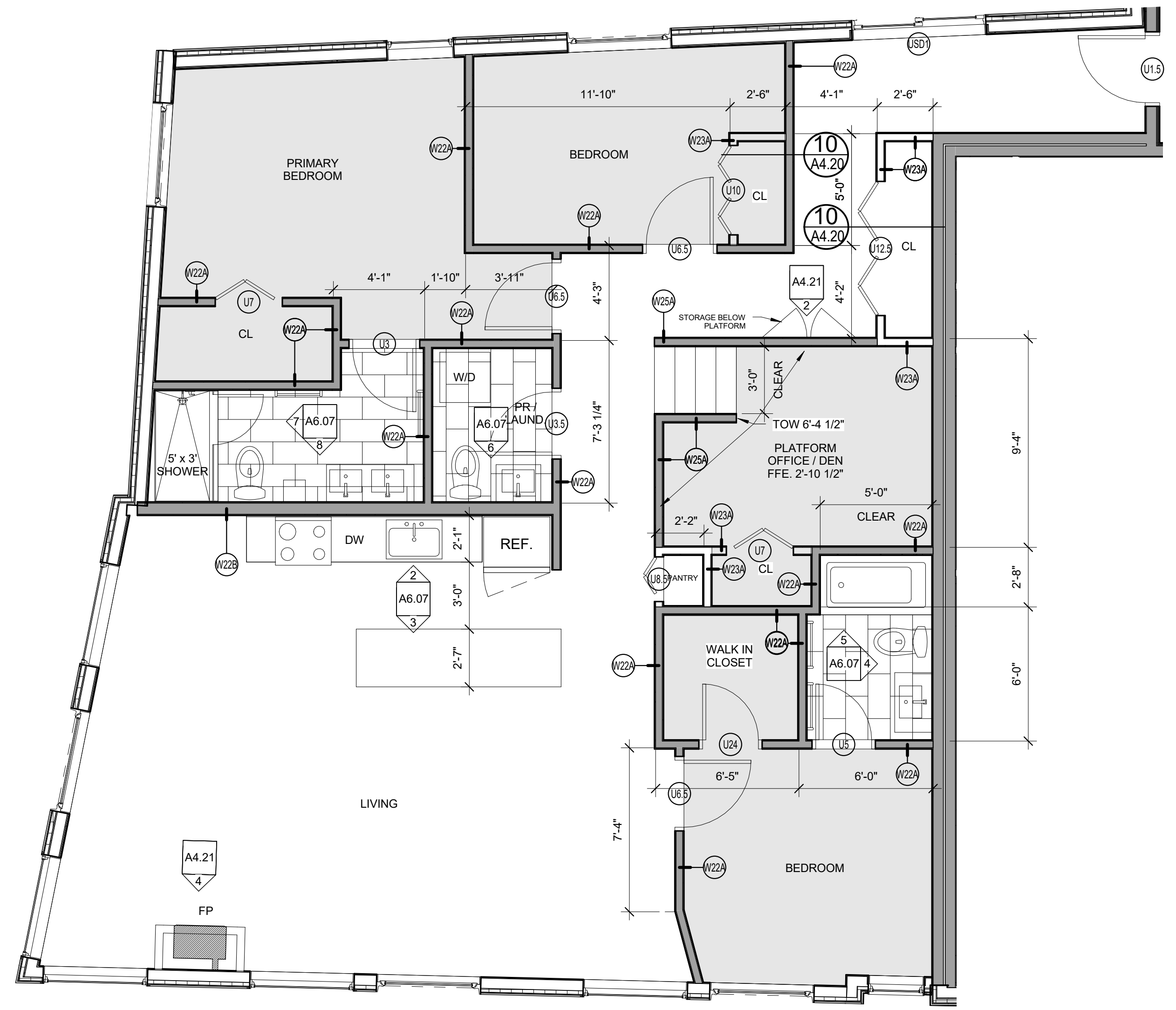
**6** UNIT 406 POWDER ROOM  
1/2" = 1'-0"



**7** UNIT 406 PRIMARY BATH ELEV. A  
1/2" = 1'-0"



**8** UNIT 406 PRIMARY BATH ELEV. B  
1/2" = 1'-0"



**1** ENLARGED PLAN - UNIT 406  
1/4" = 1'-0"

- NOTES:
- 12" x 24" RUNNING BOND TILE
  - BROADLOOM CARPET
  - WOOD FLOOR
- CLOSETS TO BE LEFT EMPTY- NO SHELF OR ROD TO BE INSTALLED
- REFER TO SPECIFICATIONS FOR ALL FINISH SELECTIONS