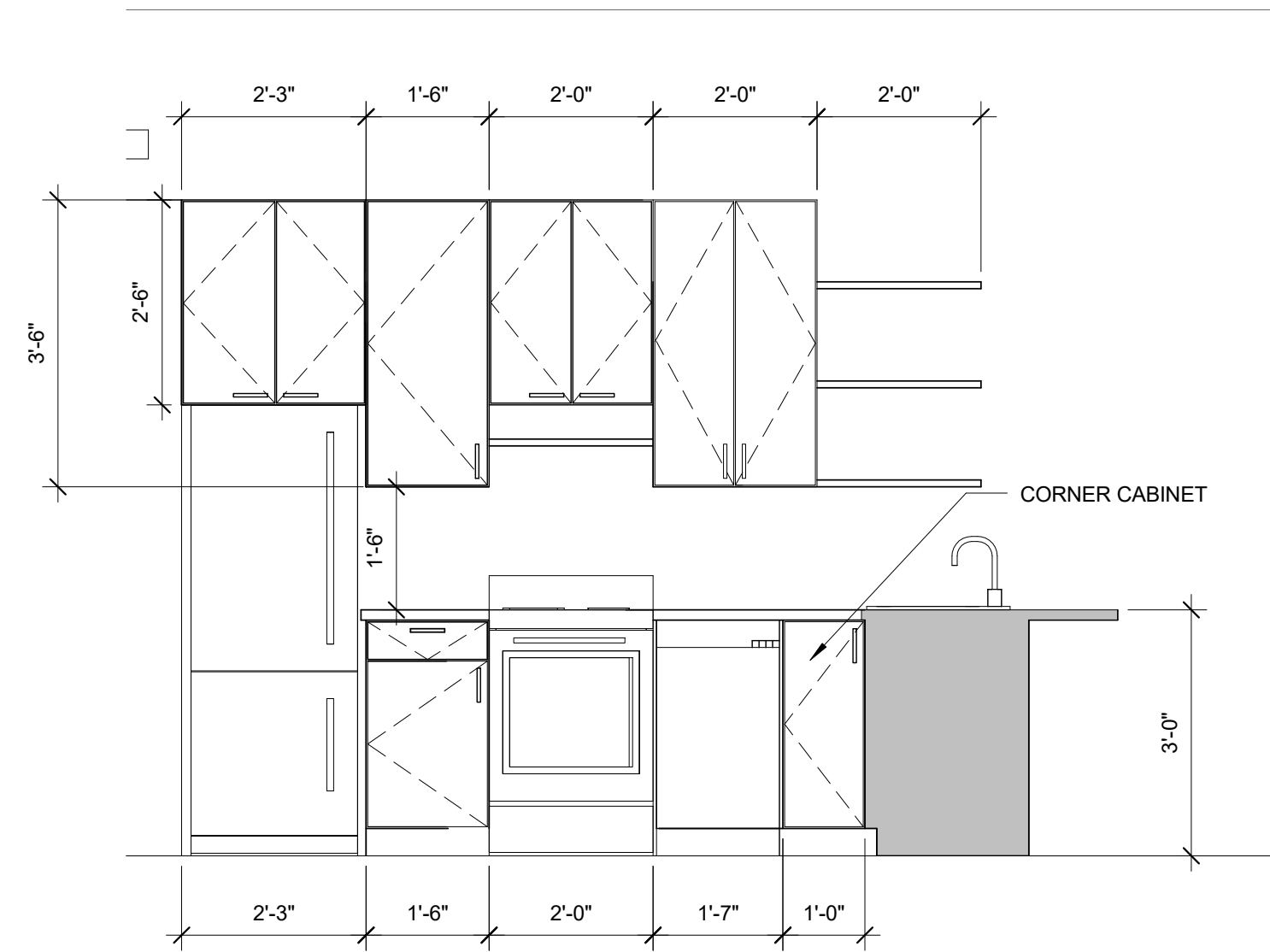
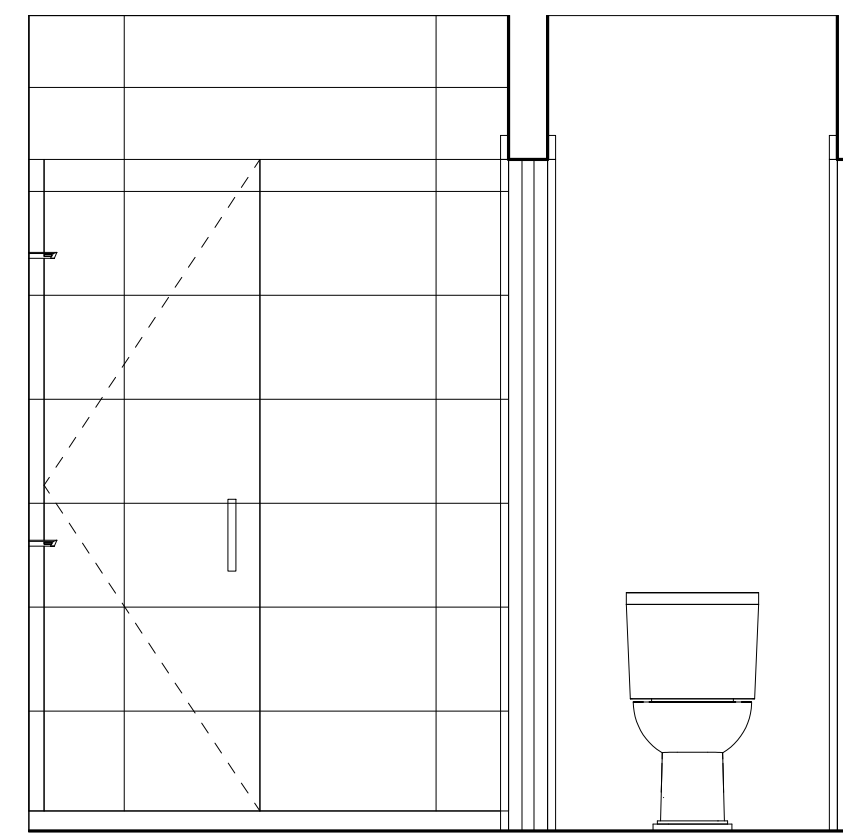


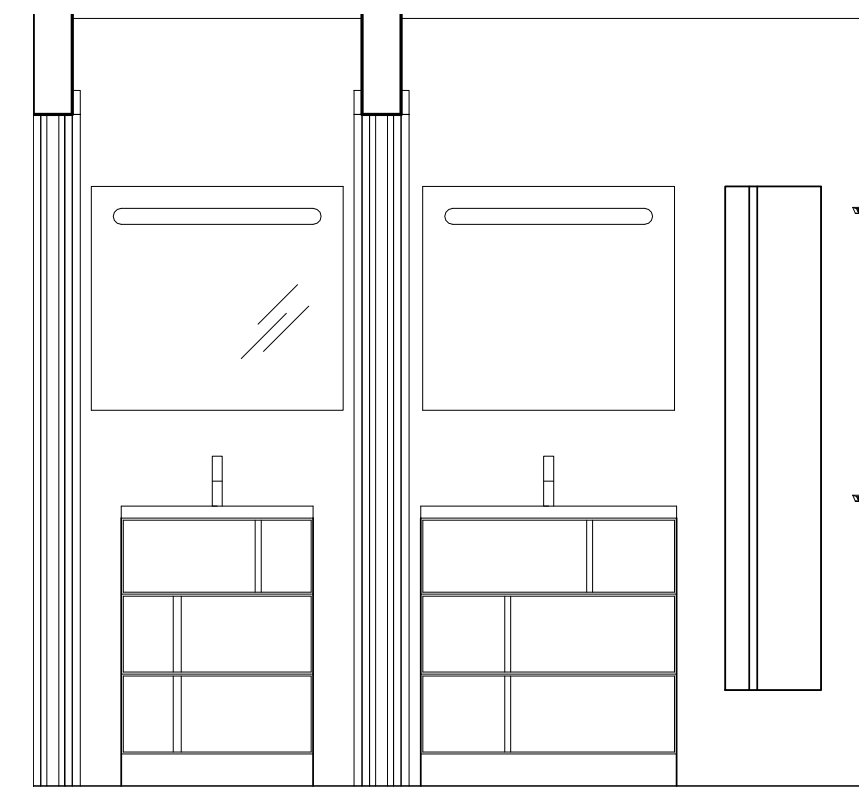
2 | UNIT 402 KITCHEN ELEV. A  
1/2" = 1'-0"



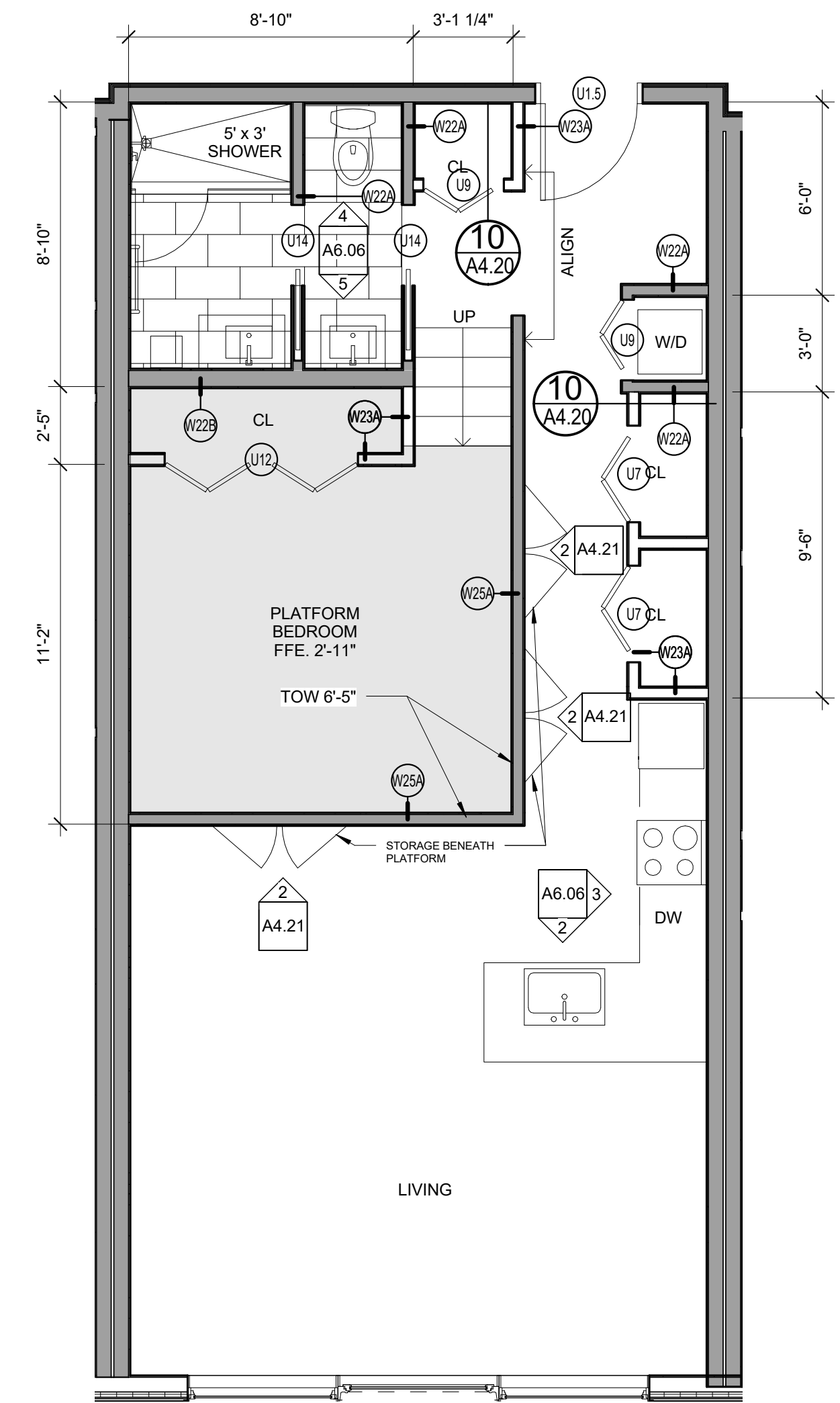
3 | UNIT 402 KITCHEN ELEV. B  
1/2" = 1'-0"



4 | UNIT 402 BATH ELEV. A  
1/2" = 1'-0"

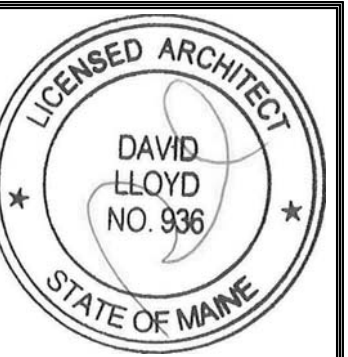


5 | UNIT 402 BATH ELEV. B  
1/2" = 1'-0"



1 | ENLARGED PLAN - UNITS 402 & 502  
1/4" = 1'-0"

	12" x 24" RUNNING BOND TILE	NOTES: CLOSETS TO BE LEFT EMPTY- NO SHELF OR ROD TO BE INSTALLED REFER TO SPECIFICATIONS FOR ALL FINISH SELECTIONS
	BROADLOOM CARPET	
	WOOD FLOOR	



Prepared For:  
**NewHeight Group**

Consultant:

**ARCHETYPE**  
architects  
48 Union Wharf Portland, Maine 04101  
(207) 772-6022 Fax (207) 772-4056

Architect:

Project:  
**LUMINATO**

167 Newbury Street Portland, Maine

Revisions:

Date: JULY 21, 2016  
Scale: As indicated

ENL. PLAN, INT. ELEV.  
UNIT 402 & 502

**A6.06**