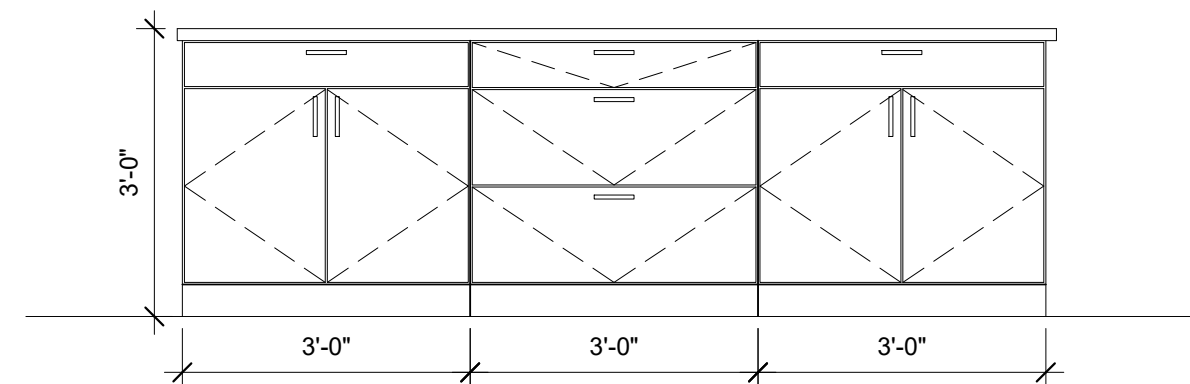
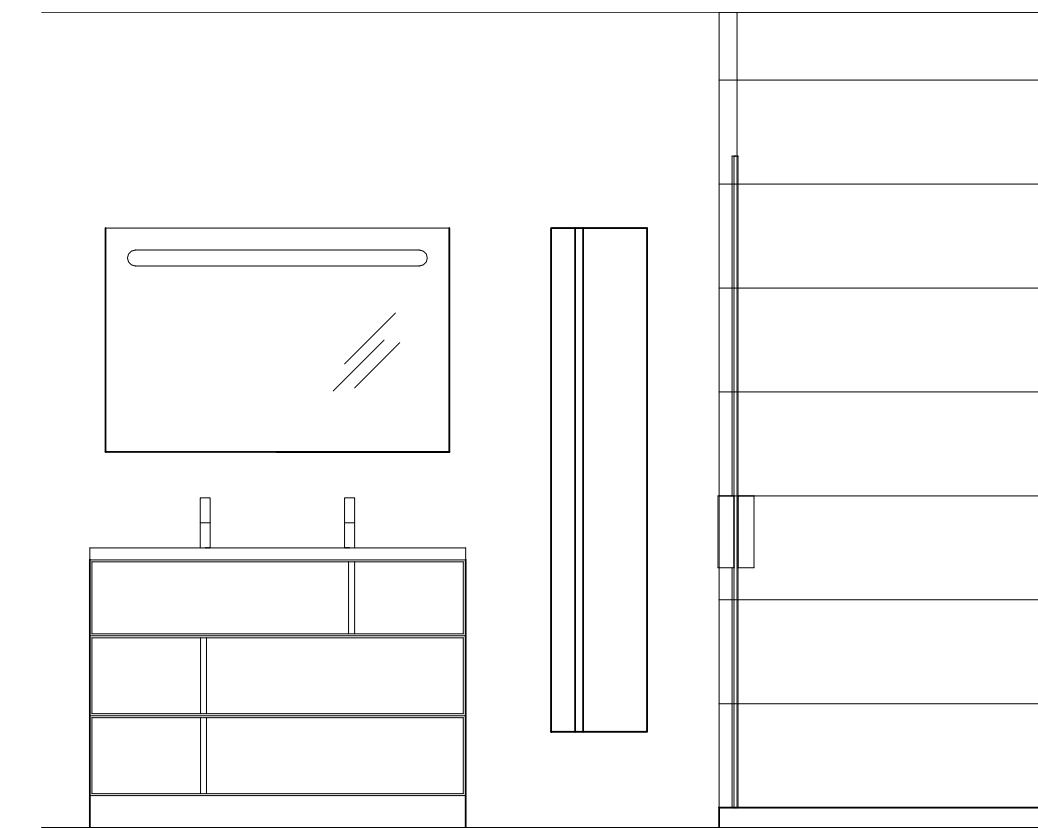


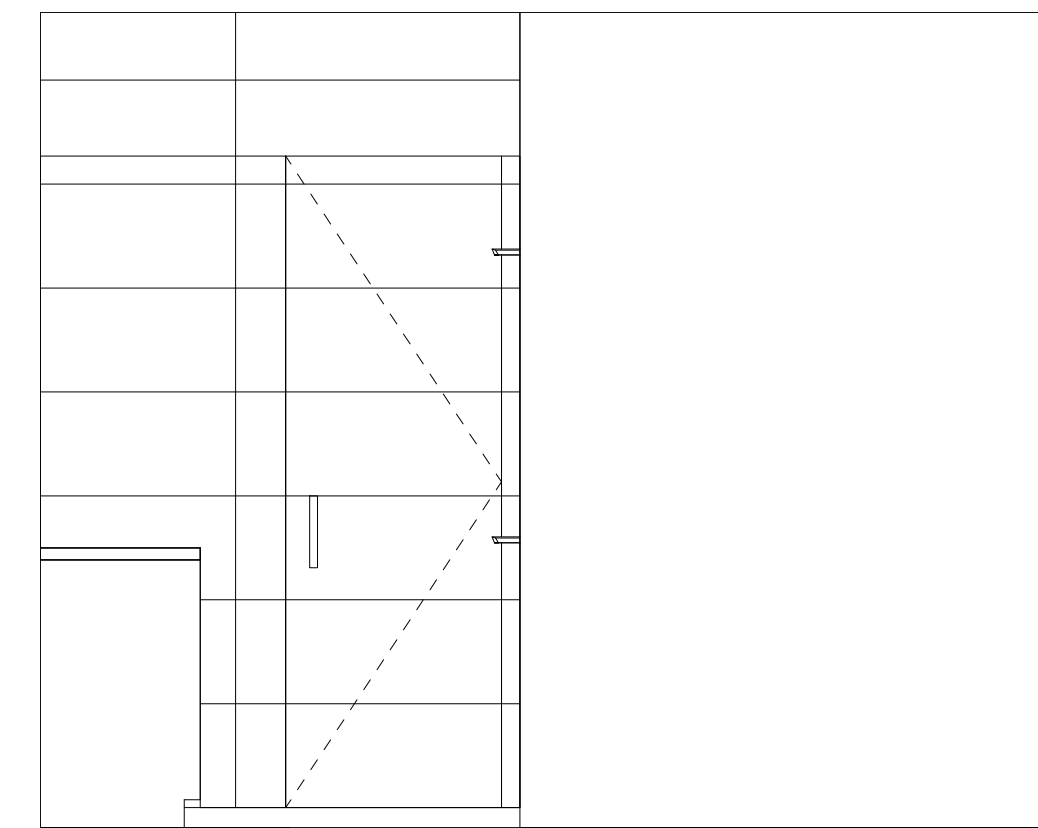
2 | UNIT 206 KITCHEN ELEV. A
1/2" = 1'-0"



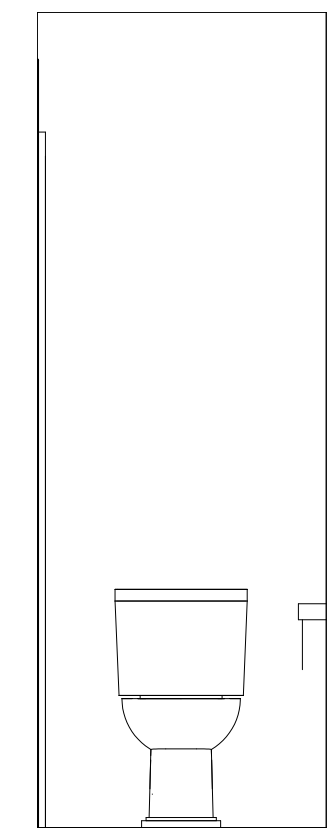
3 | UNIT 206 KITCHEN ELEV. B
1/2" = 1'-0"



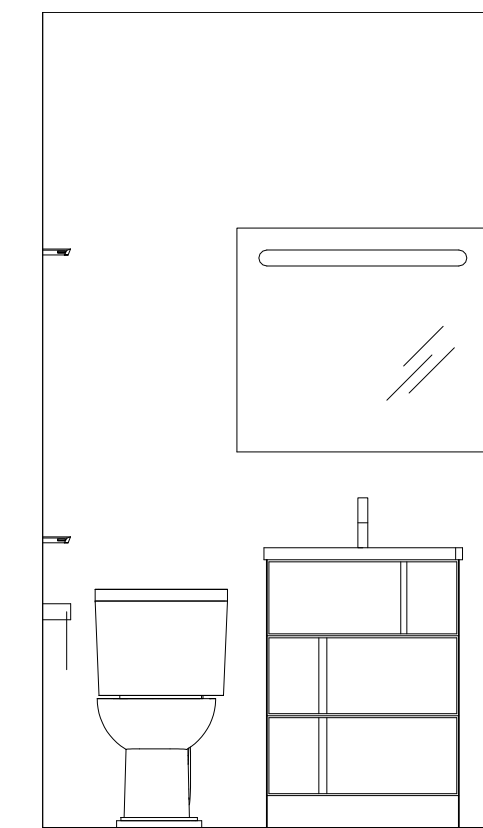
4 | UNIT 206 BATH ELEV. A
1/2" = 1'-0"



5 | UNIT 206 BATH ELEV. B
1/2" = 1'-0"



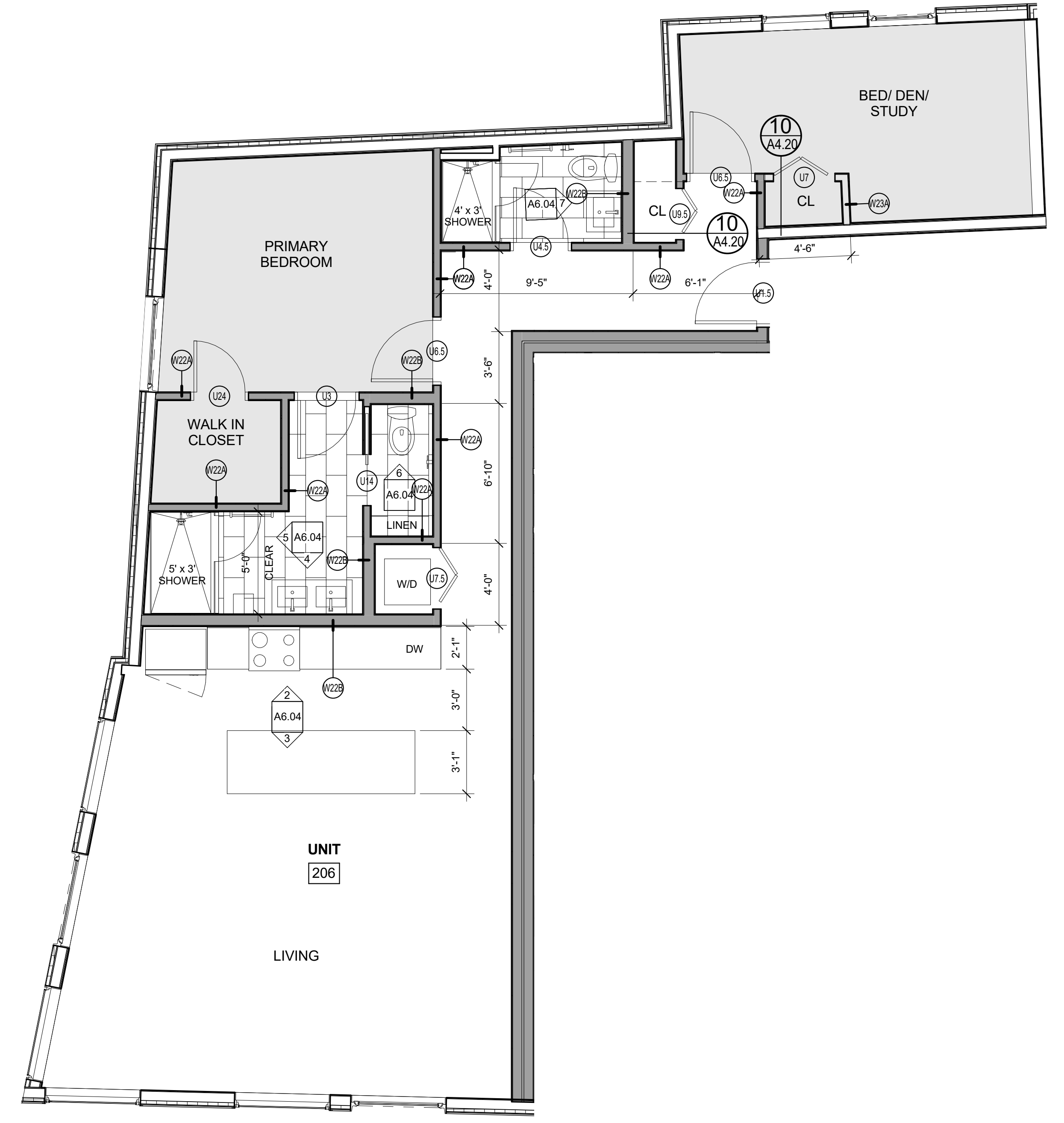
6 | UNIT 206 BATH ELEV. C
1/2" = 1'-0"



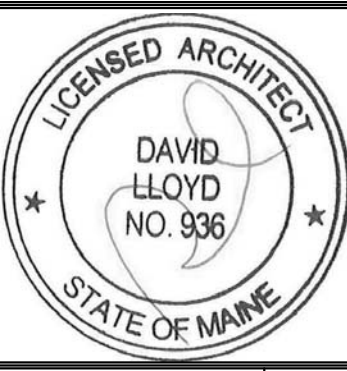
7 | UNIT 206 BATH 2 ELEV.
1/2" = 1'-0"

NOTES:

- 12" x 24" RUNNING BOND TILE
- BROADLOOM CARPET
- WOOD FLOOR
- CLOSETS TO BE LEFT EMPTY- NO SHELF OR ROD TO BE INSTALLED
- REFER TO SPECIFICATIONS FOR ALL FINISH SELECTIONS



1 | ENLARGED PLAN - UNITS 206 & 306
1/4" = 1'-0"



Prepared For:
NewHeight Group

Consultant:
ARCHETYPE architects
48 Union Wharf Portland, Maine 04101
(207) 772-6022 ARCHETYPE@ARCHETYPERSA.COM

Project:
LUMINATO
167 Newbury Street Portland, Maine

Date:
JULY 21, 2016
Scale: As indicated
ENL. PLAN, INT. ELEV.
UNIT 206

A6.04