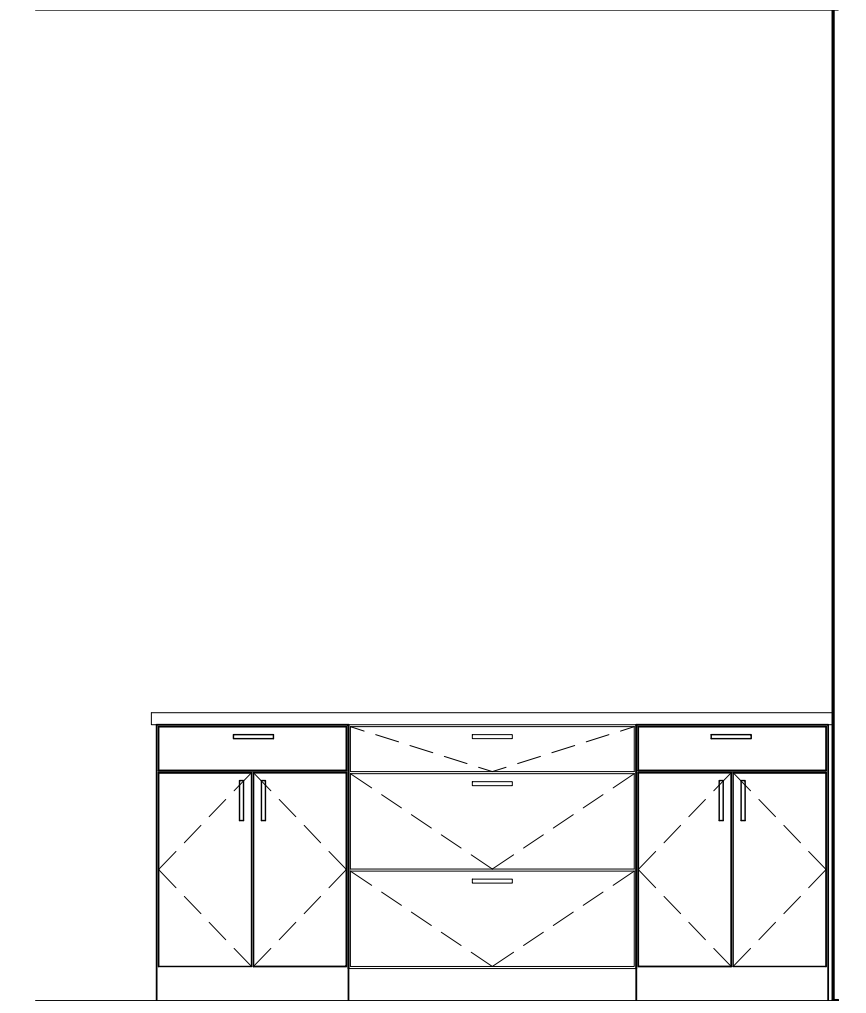
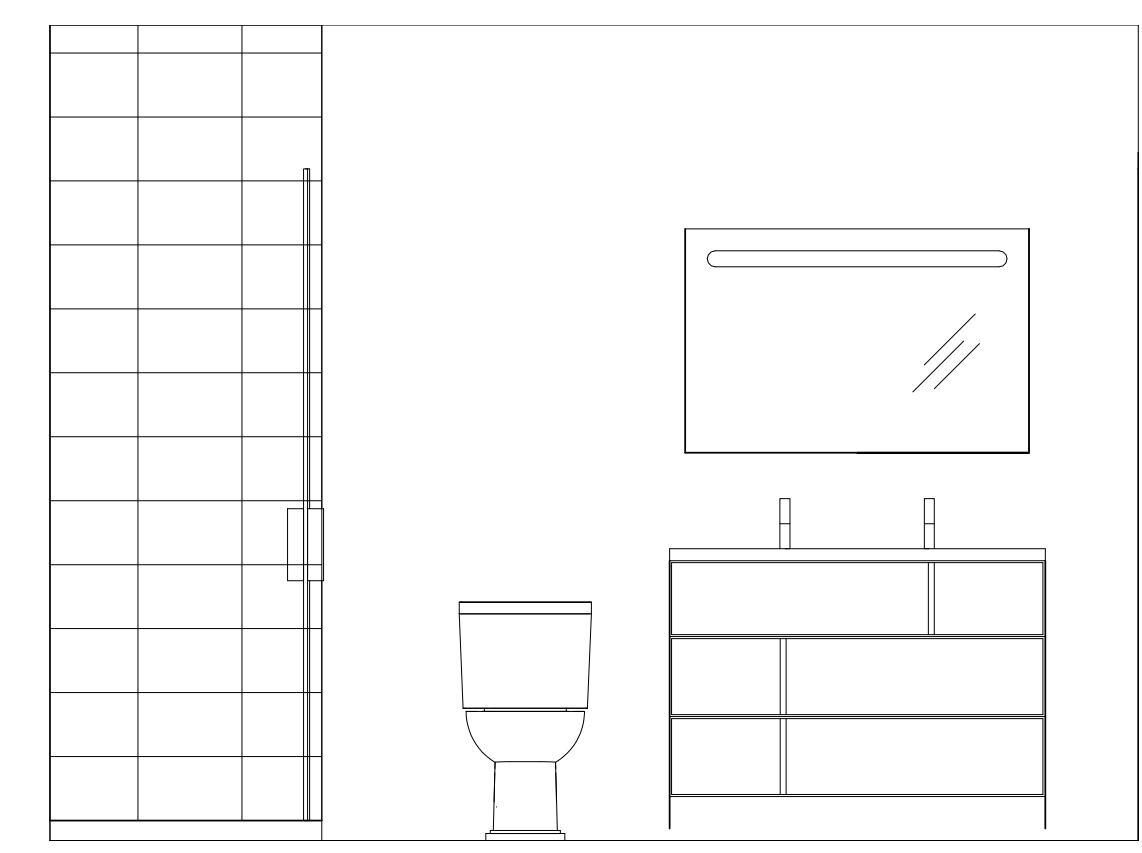


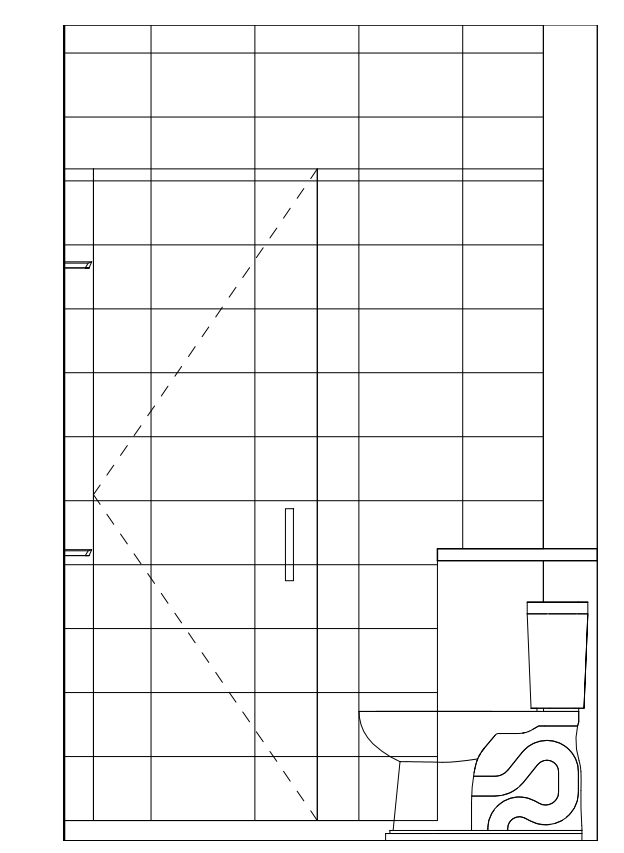
2 | UNIT 204 KITCHEN ELEV. A
1/2" = 1'-0"
0 0'-6" 1'-0" 2'-0" 4'-0"



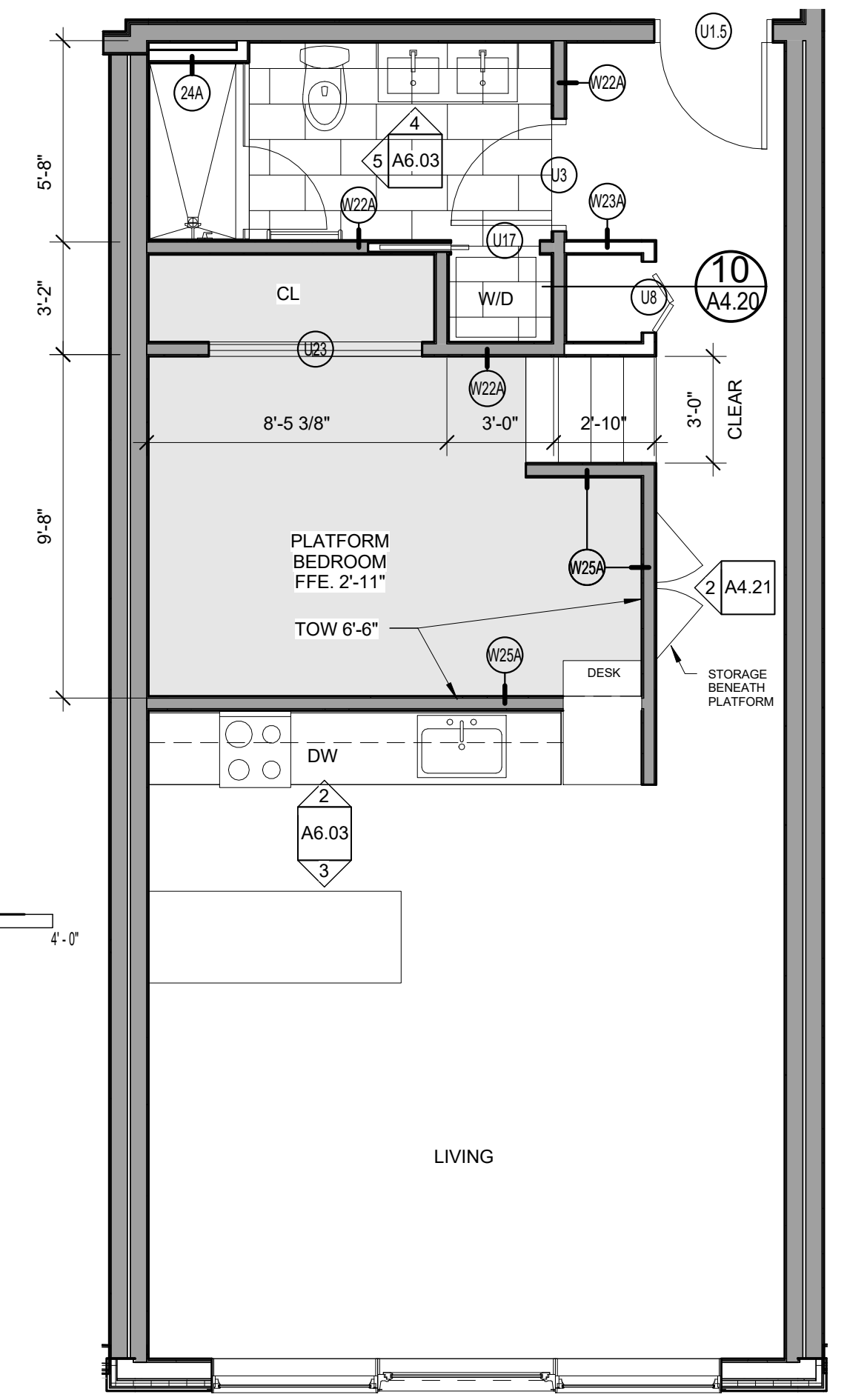
3 | UNIT 204 KITCHEN ELEV. B
1/2" = 1'-0"
0 0'-6" 1'-0" 2'-0" 4'-0"



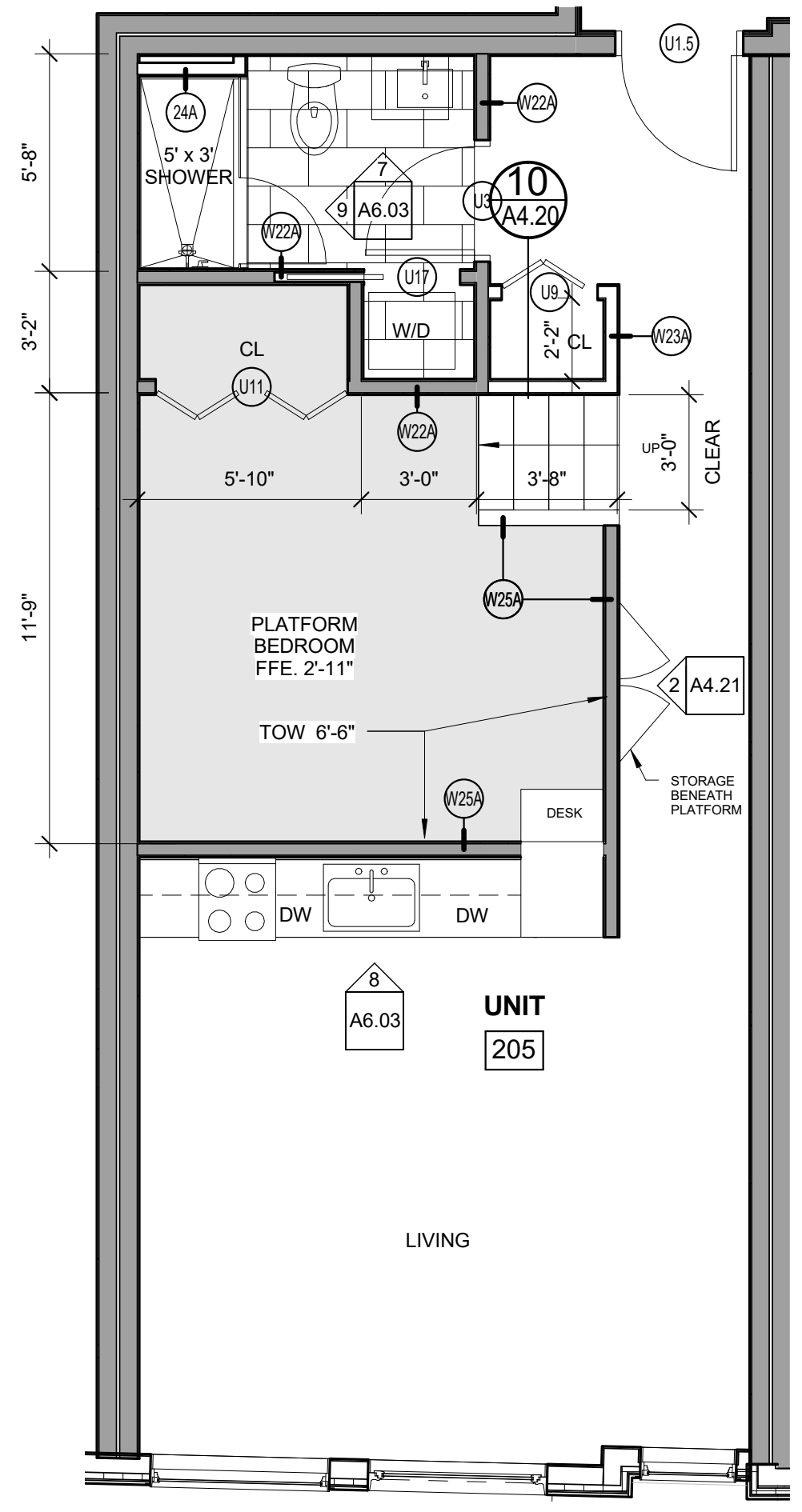
4 | UNIT 204 BATH ELEV. A
1/2" = 1'-0"
0 0'-6" 1'-0" 2'-0" 4'-0"



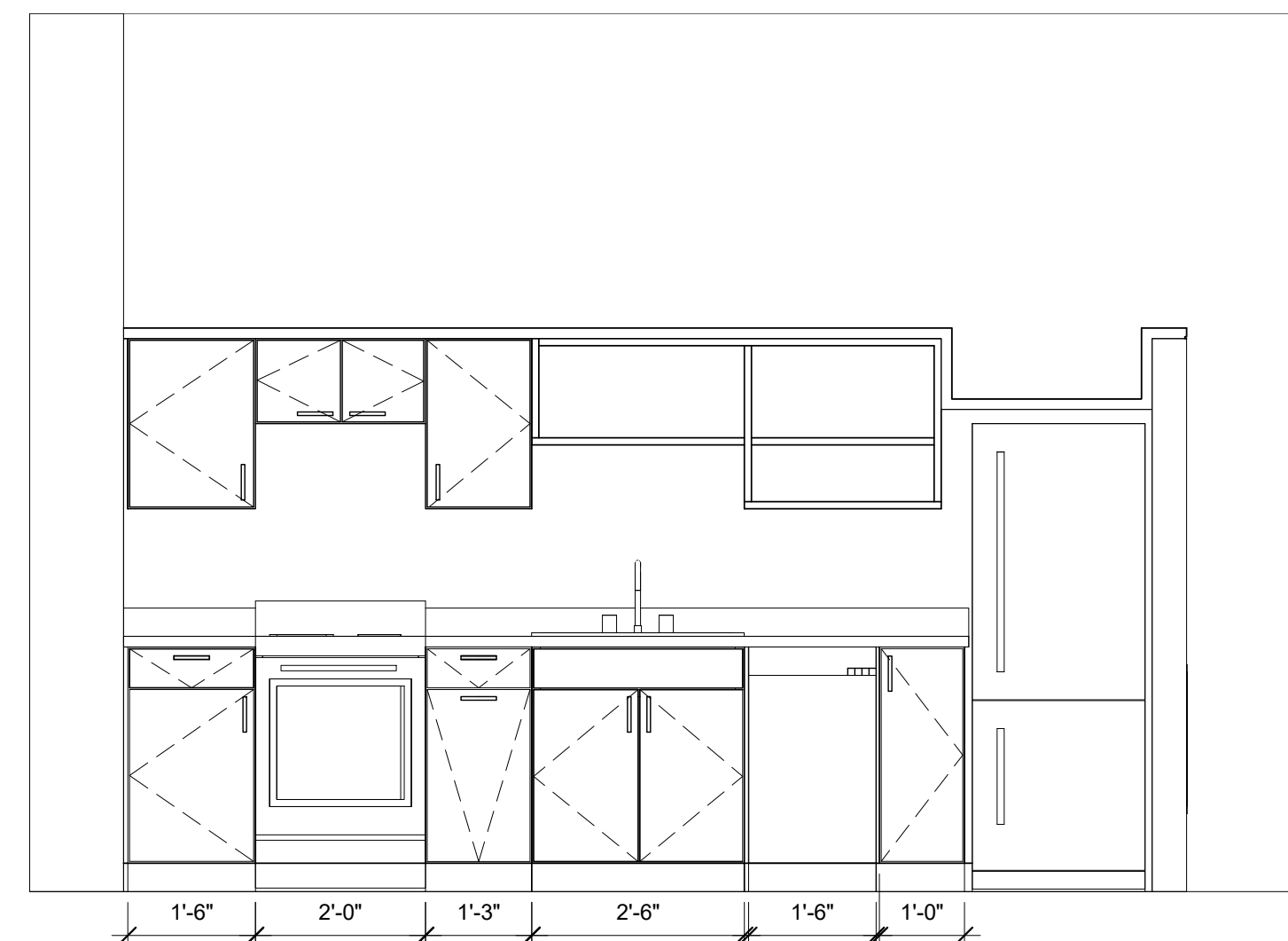
5 | UNIT 204 BATH ELEV. B
1/2" = 1'-0"
0 0'-6" 1'-0" 2'-0" 4'-0"



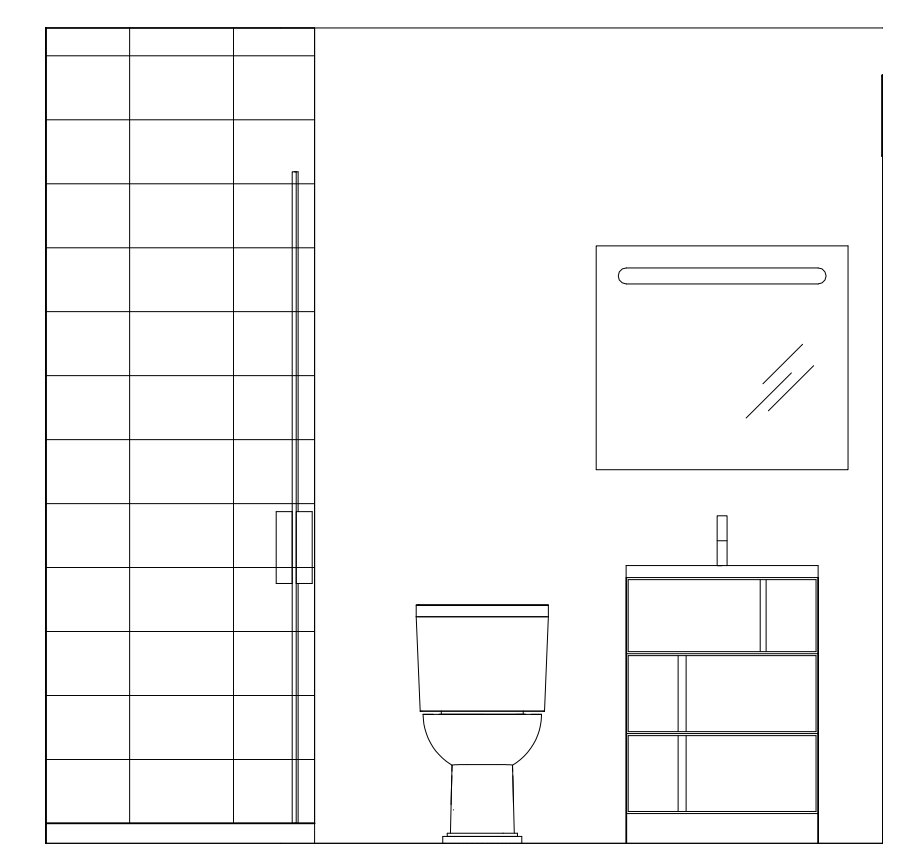
1 | ENLARGED PLAN - UNITS 204, 304, 404 & 504
1/4" = 1'-0"
0 1'-0" 2'-0" 4'-0" 8'-0"



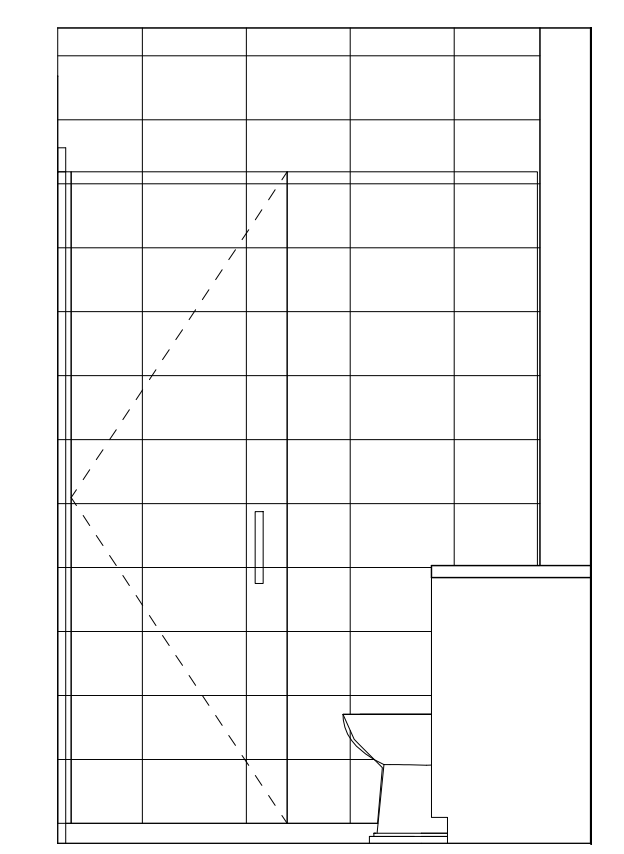
6 | ENLARGED PLAN - UNITS 205 & 305
1/4" = 1'-0"
0 1'-0" 2'-0" 4'-0" 8'-0"



8 | UNIT 205 KITCHEN ELEV. A
1/2" = 1'-0"
0 0'-6" 1'-0" 2'-0" 4'-0"



7 | UNIT 205 BATH ELEV. A
1/2" = 1'-0"
0 0'-6" 1'-0" 2'-0" 4'-0"



9 | UNIT 205 BATH ELEV. B
1/2" = 1'-0"
0 0'-6" 1'-0" 2'-0" 4'-0"

	12" x 24" RUNNING BOND TILE	NOTES: CLOSETS TO BE LEFT EMPTY. NO SHELF OR ROD TO BE INSTALLED. REFER TO SPECIFICATIONS FOR ALL FINISH SELECTIONS
	BROADLOOM CARPET	
	WOOD FLOOR	