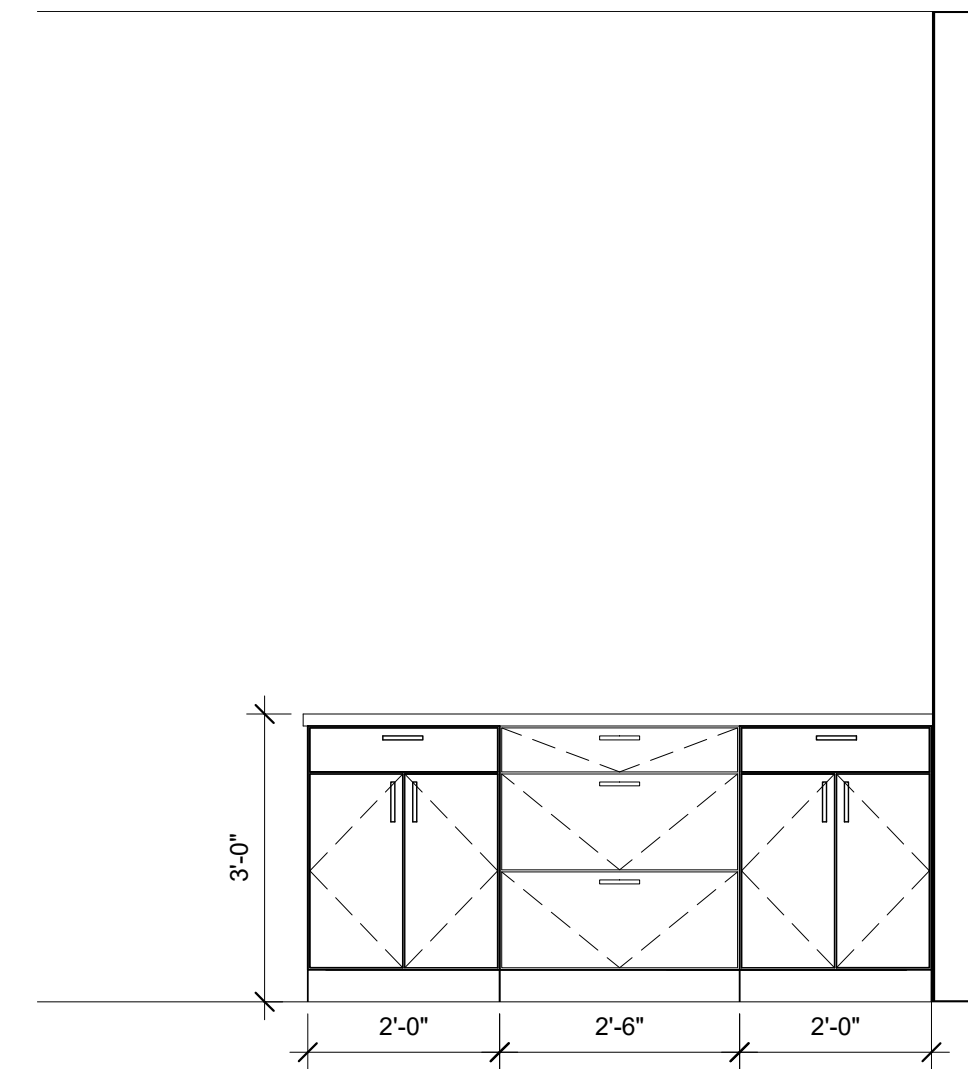
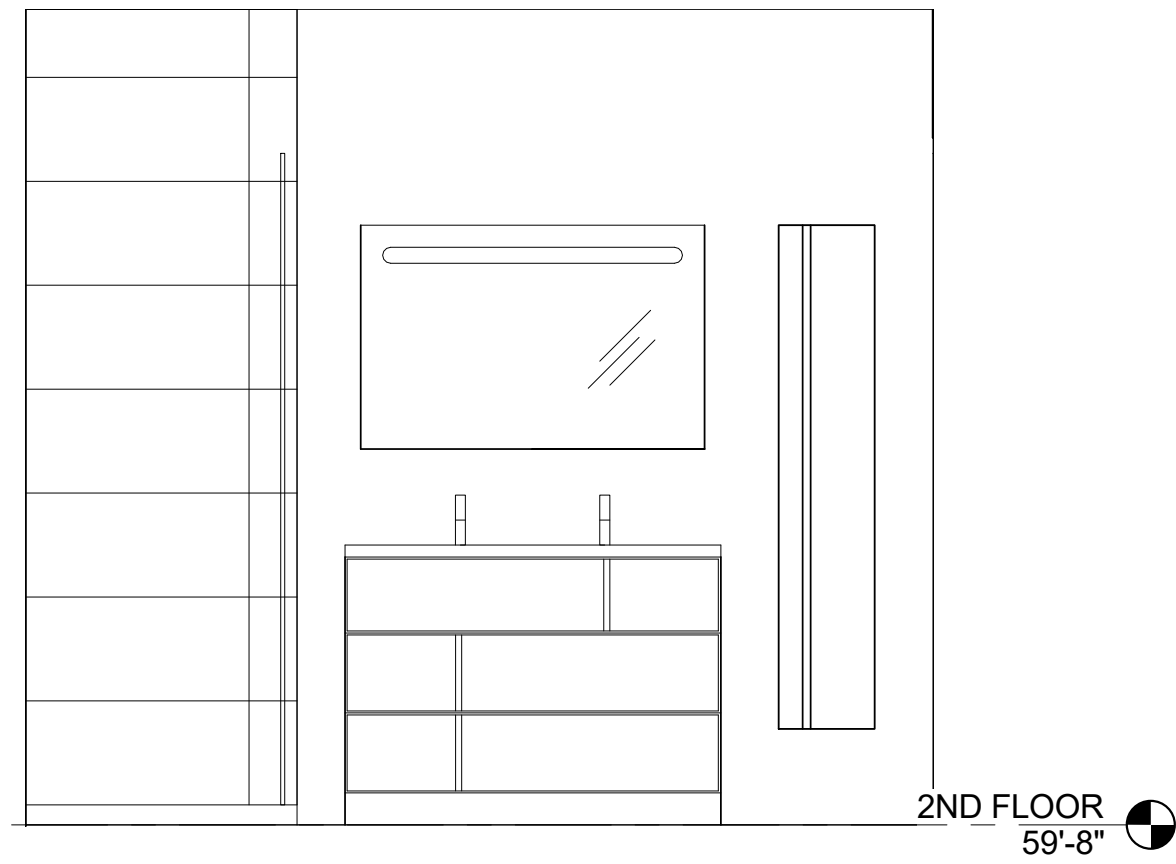


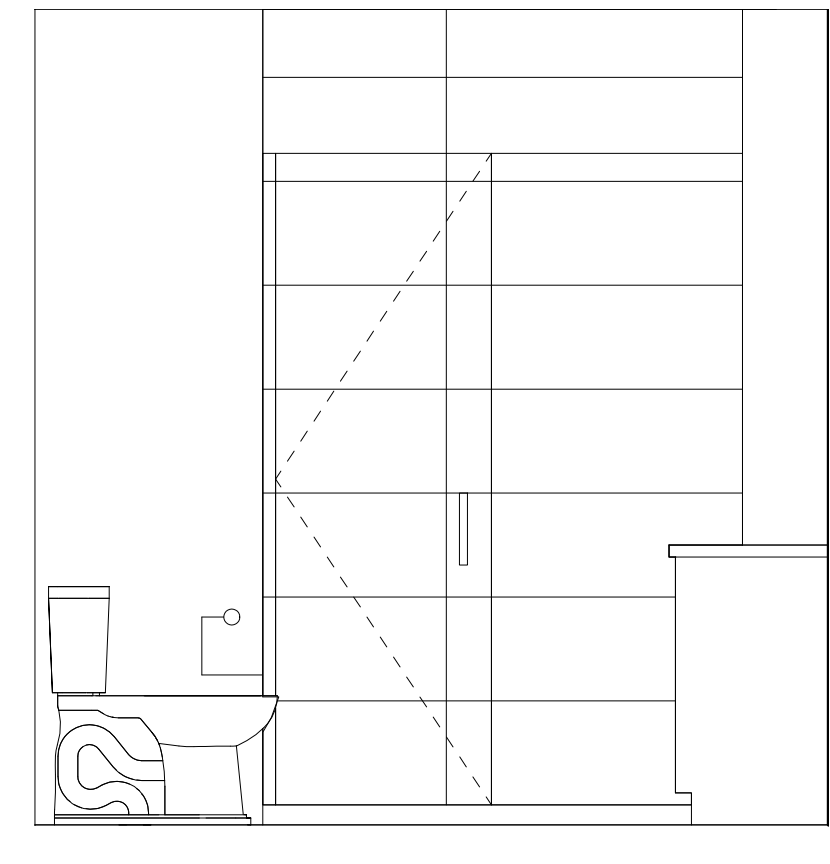
2 | UNIT 202 & 302 KITCHEN ELEV. A
1/2" = 1'-0"



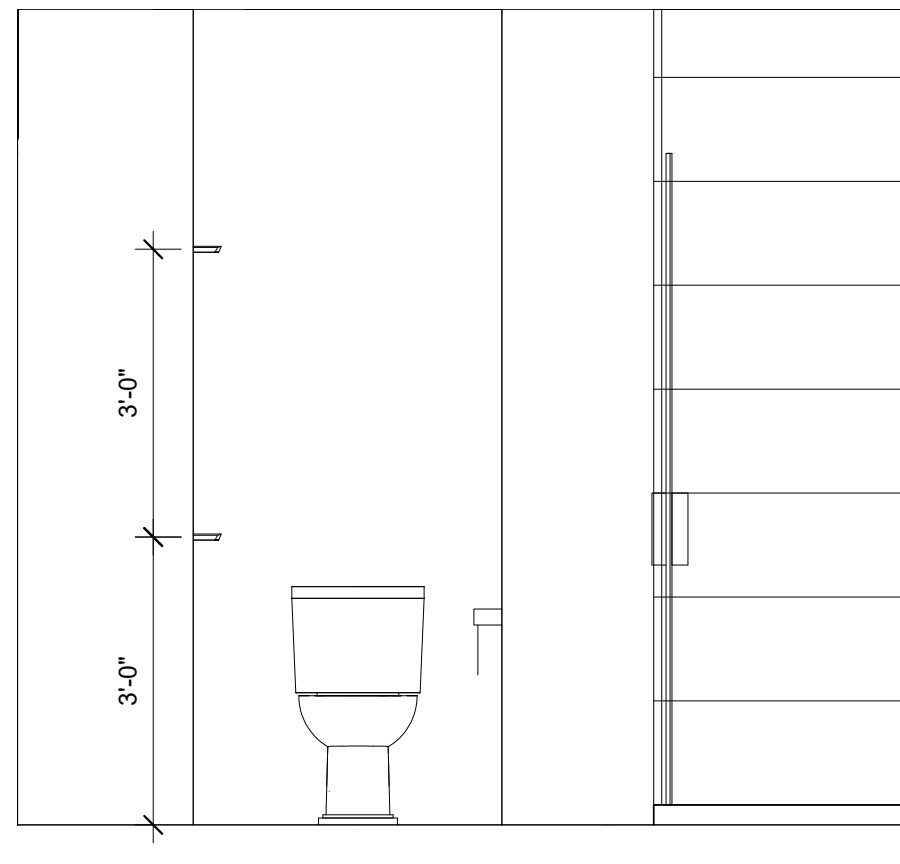
3 | UNIT 202 & 302 KITCHEN ELEV. B
1/2" = 1'-0"



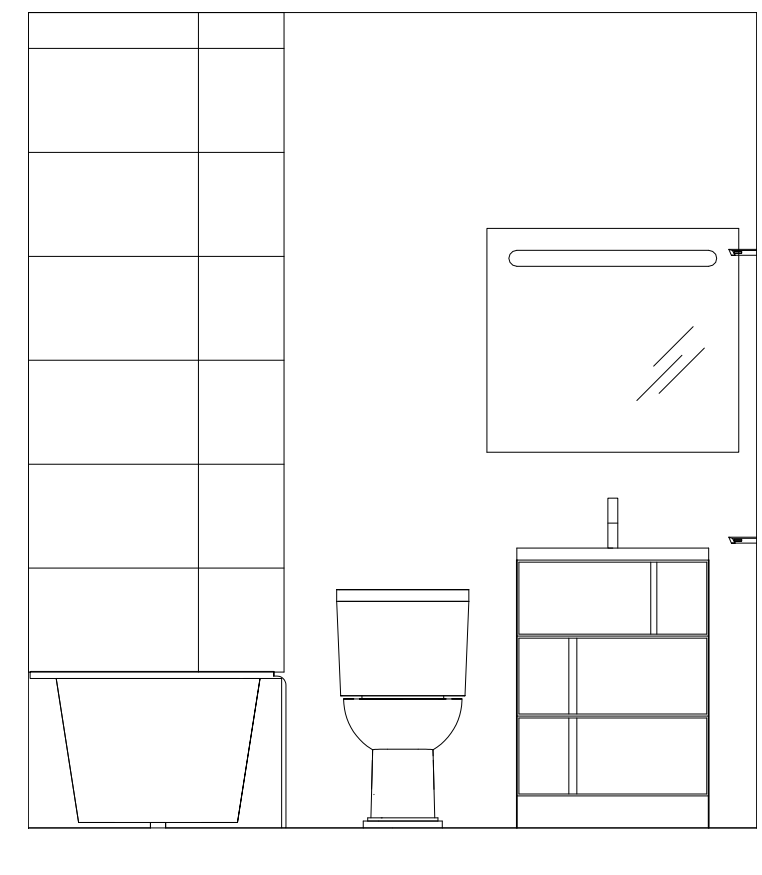
4 | UNIT 202 & 302 BATH ELEV. A
1/2" = 1'-0"



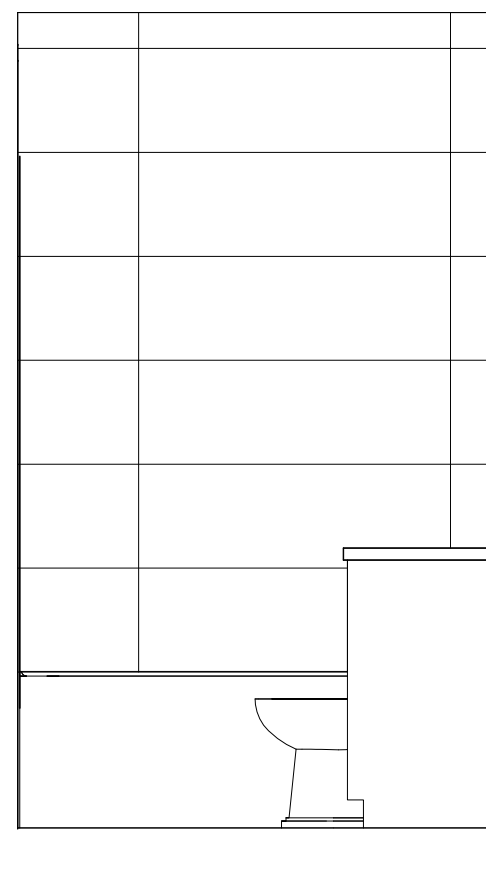
5 | UNIT 202 & 302 BATH ELEV. B
1/2" = 1'-0"



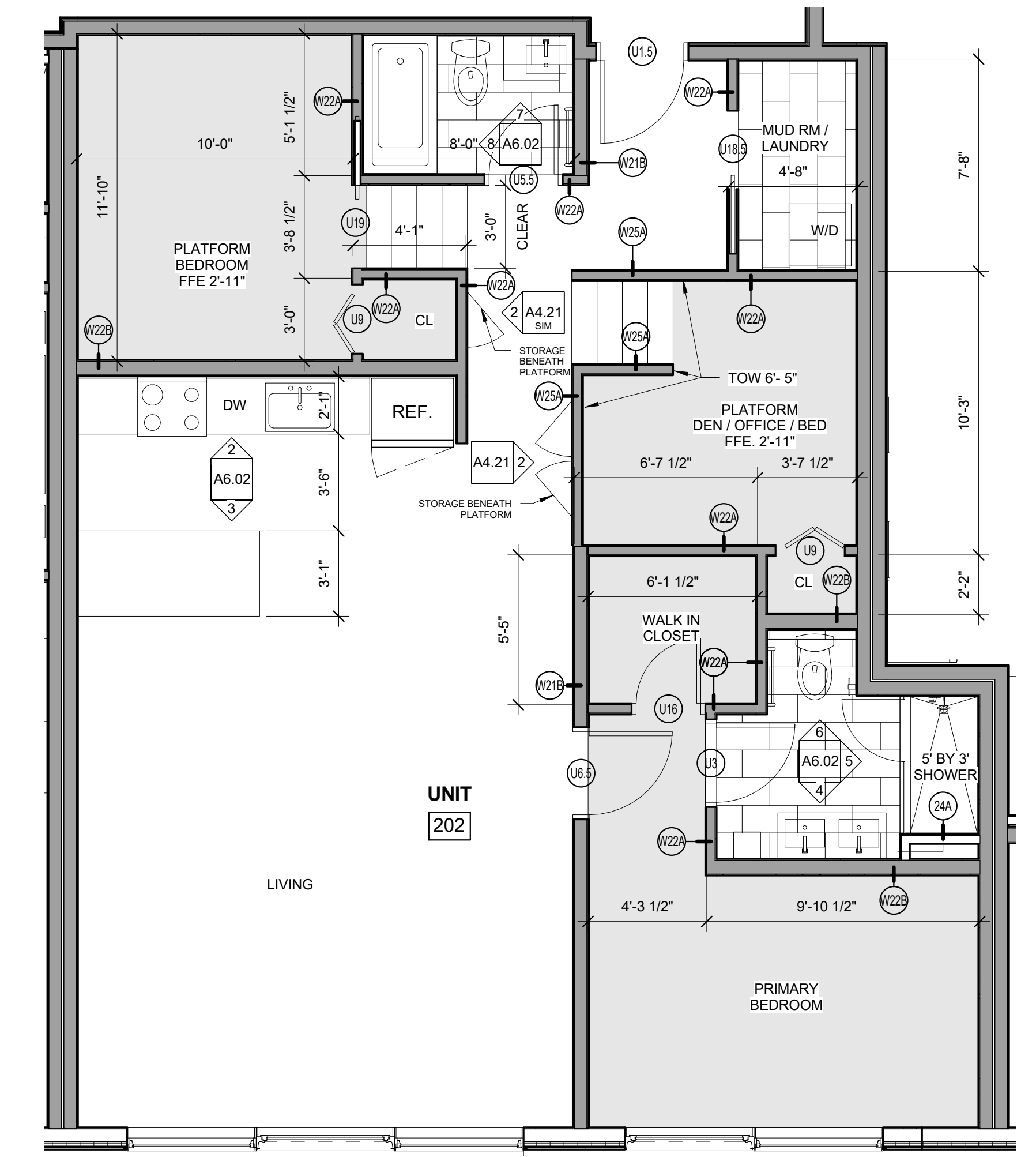
6 | UNIT 202 & 302 BATH ELEV. C
1/2" = 1'-0"



7 | UNIT 202 & 302 BATH 2 ELEV. A
1/2" = 1'-0"

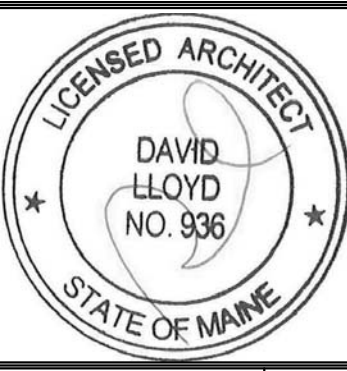


8 | UNIT 202 & 302 BATH 2 ELEV. B
1/2" = 1'-0"



1 | ENLARGED PLAN - UNITS 202 & 302
1/4" = 1'-0"

- 12" x 24" RUNNING BOND TILE
 - BROADLOOM CARPET
 - WOOD FLOOR
- NOTES:
CLOSETS TO BE LEFT EMPTY; NO SHELF OR ROD TO BE INSTALLED
REFER TO SPECIFICATIONS FOR ALL FINISH SELECTIONS



Prepared For:
NewHeight Group
118 Congress Street #401
Portland, Maine

Consultant:
ARCHETYPE architects
48 Union Wharf Portland, Maine 04101
(207) 772-6022 ARCHETYPE@ARCHETYPEA.COM

Project:
LUMINATO
167 Newbury Street Portland, Maine

Date: JULY 21, 2016
Scale: As indicated
ENL. PLANS, INT. ELEV.
UNIT 202 & 302

A6.02