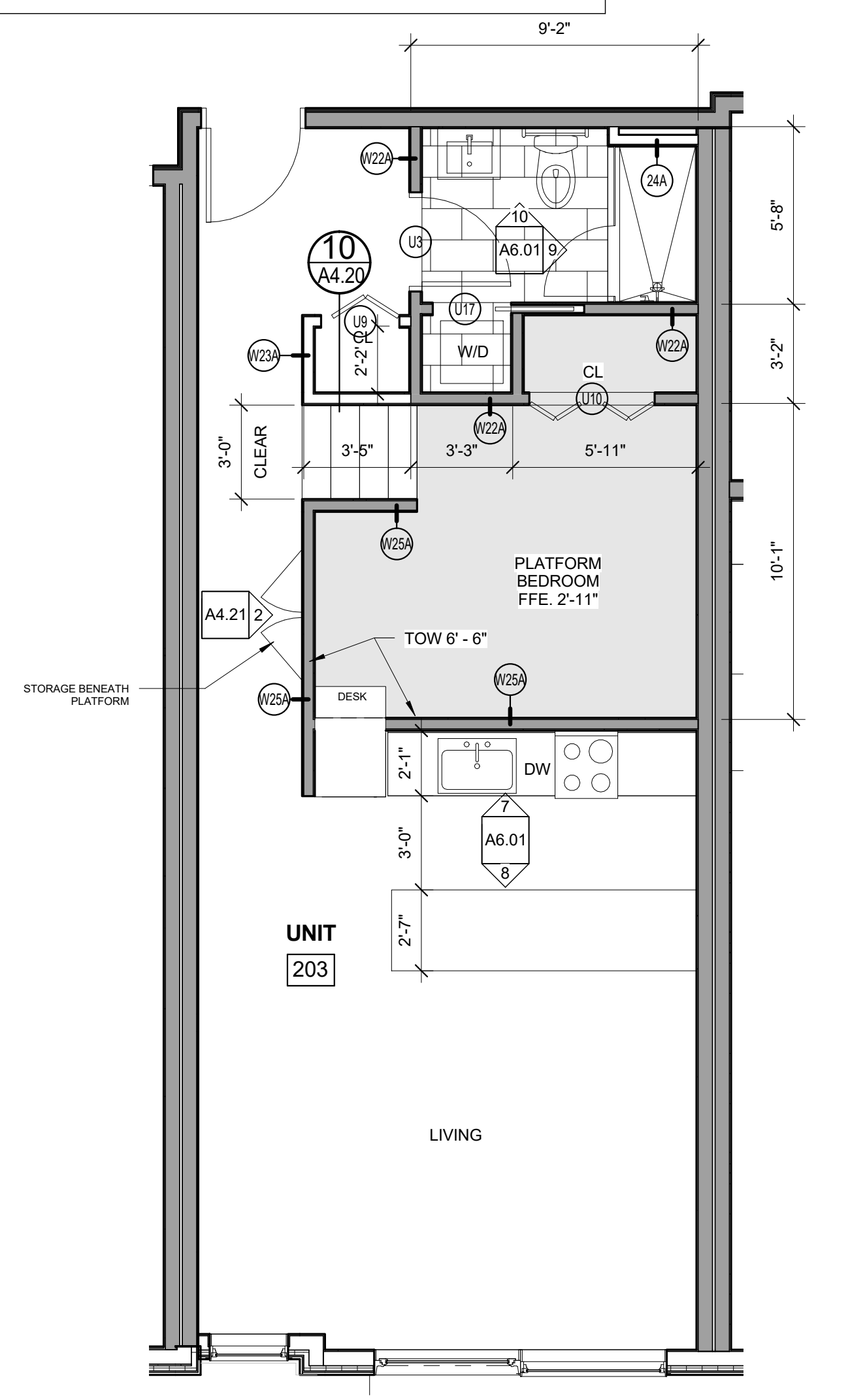
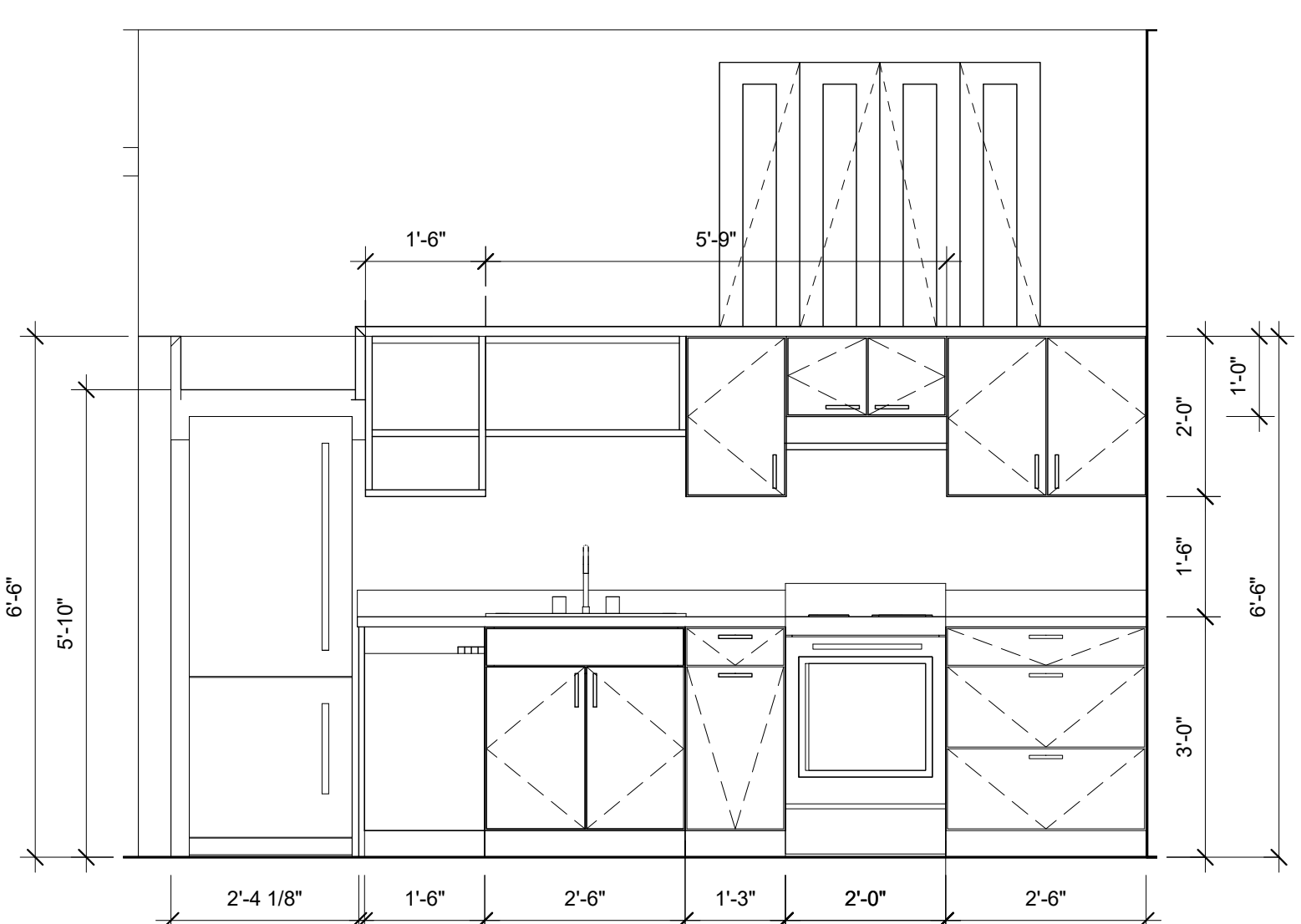


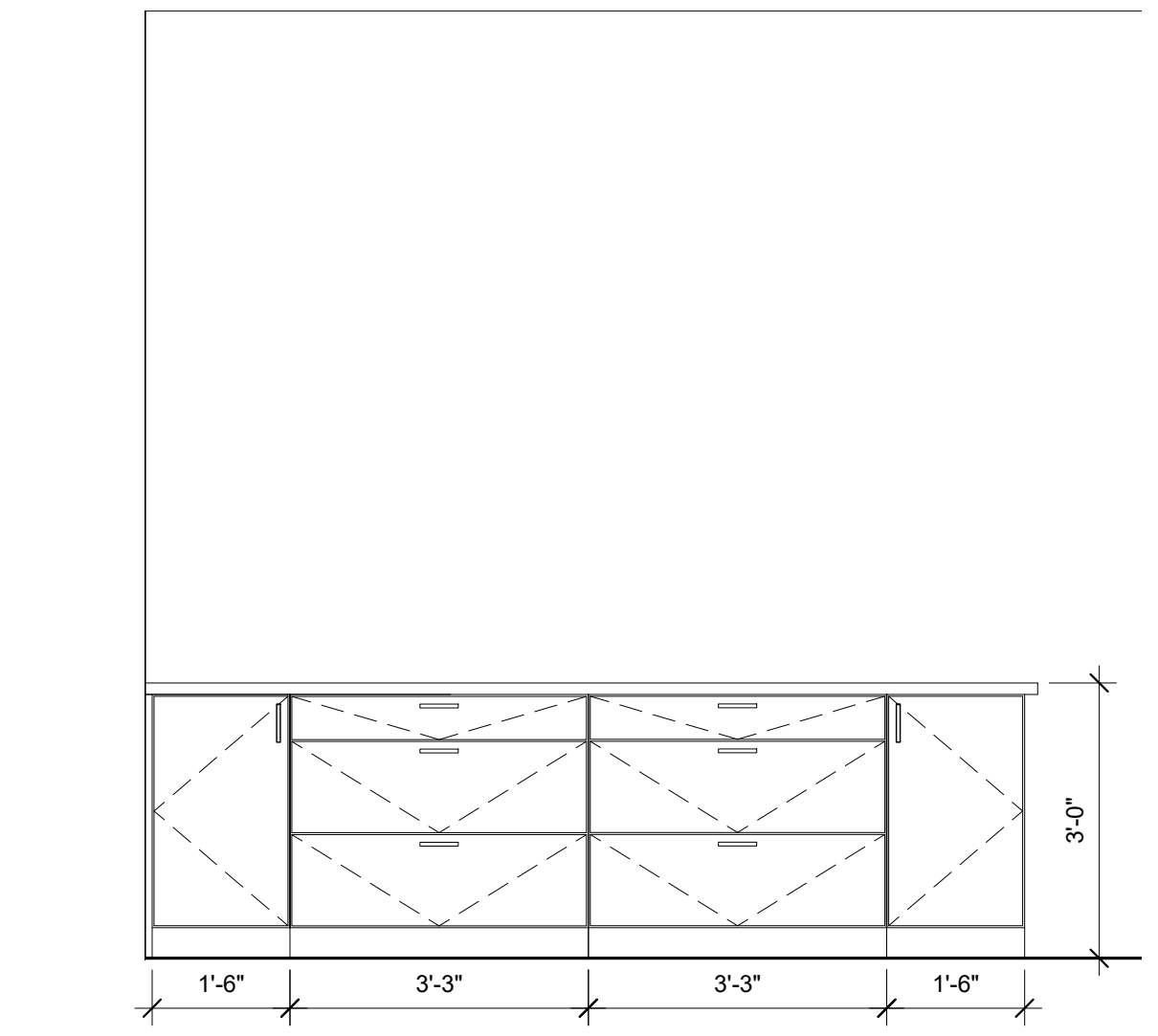
NOTES:  
 12" x 24" RUNNING BOND TILE  
 CLOSETS TO BE LEFT EMPTY-NO SHELF OR ROD TO BE INSTALLED  
 REFER TO SPECIFICATIONS FOR ALL FINISH SELECTIONS  
 BROADLOOM CARPET  
 WOOD FLOOR



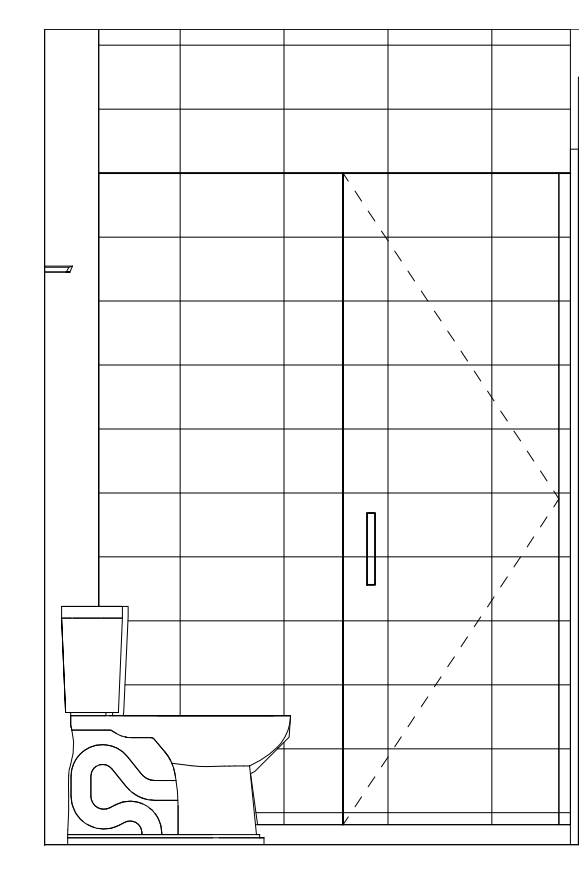
6 ENLARGED PLAN - UNITS 203, 303, 403 & 503  
 1/4" = 1'-0"



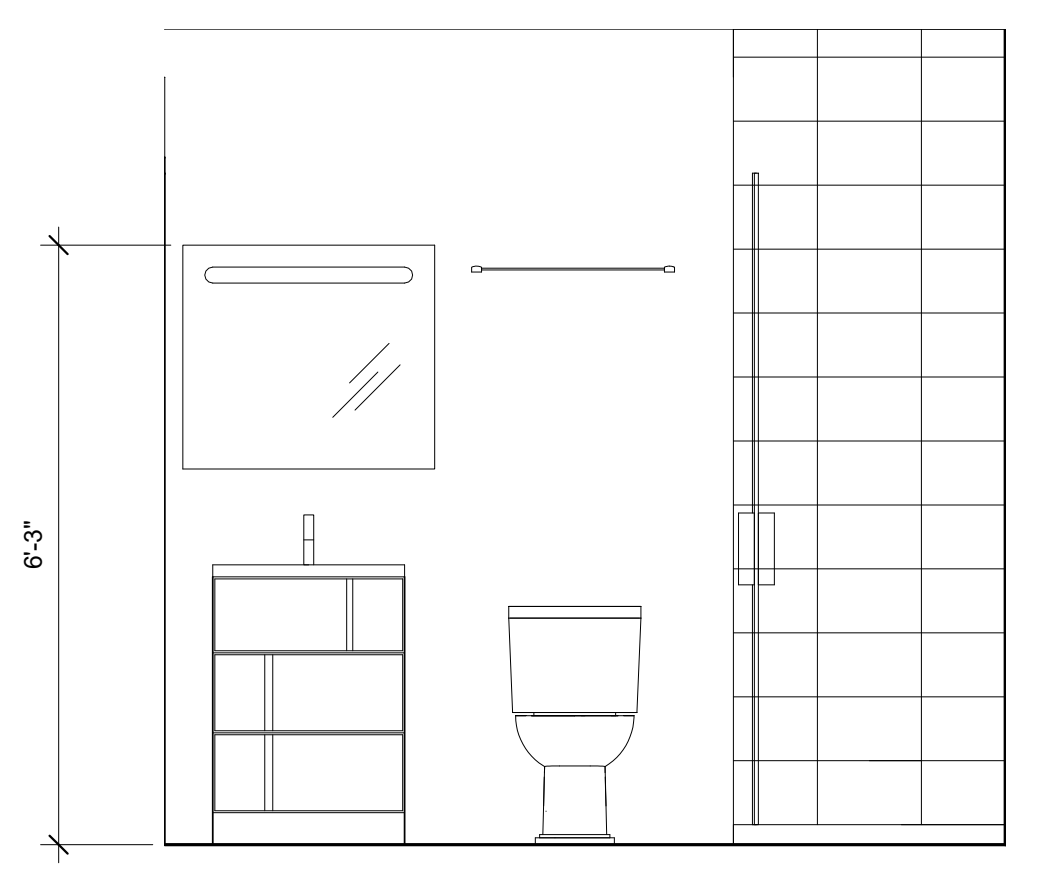
7 UNIT 203 & 303 KITCHEN ELEV. A  
 1/2" = 1'-0"



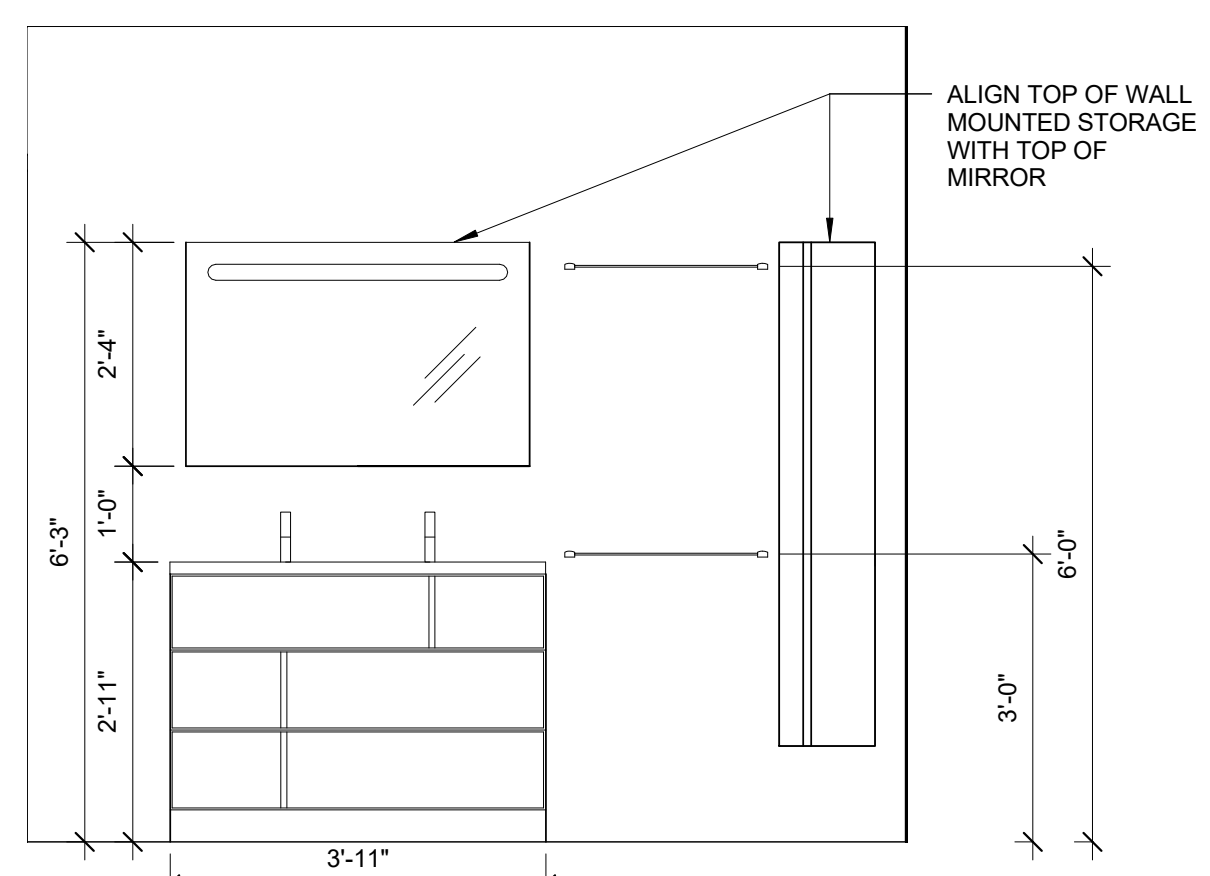
8 UNIT 203 & 303 KITCHEN ELEV. B  
 1/2" = 1'-0"



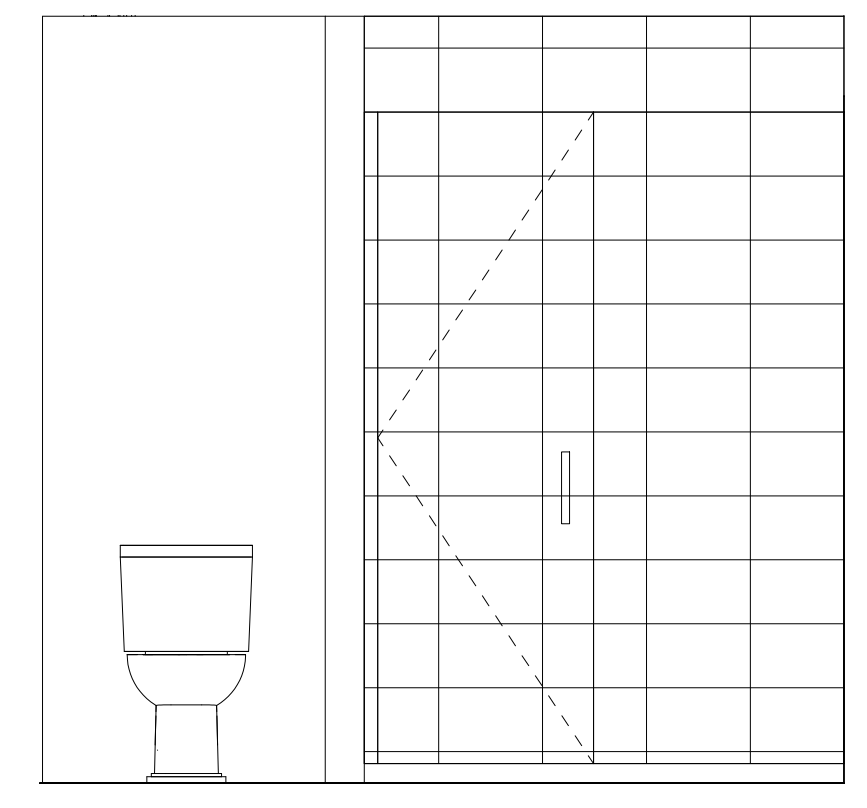
9 UNIT 203 & 303 BATH ELEV. B  
 1/2" = 1'-0"



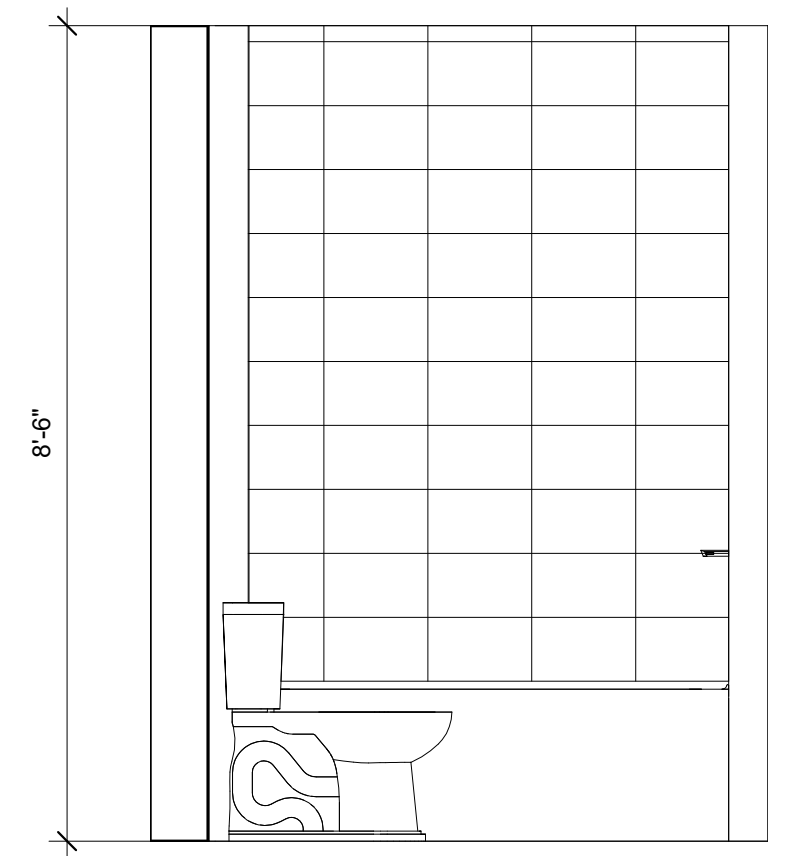
10 UNIT 203 & 303 BATH ELEV. A  
 1/2" = 1'-0"



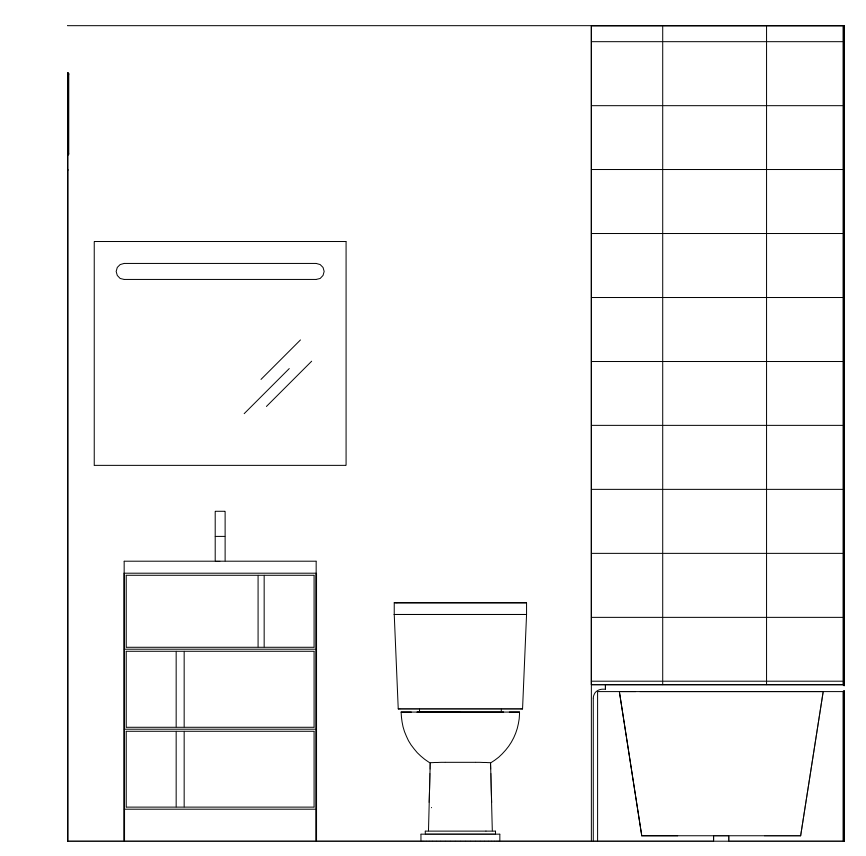
12 UNIT 201 & 301 BATH 2 ELEV. A  
 1/2" = 1'-0"



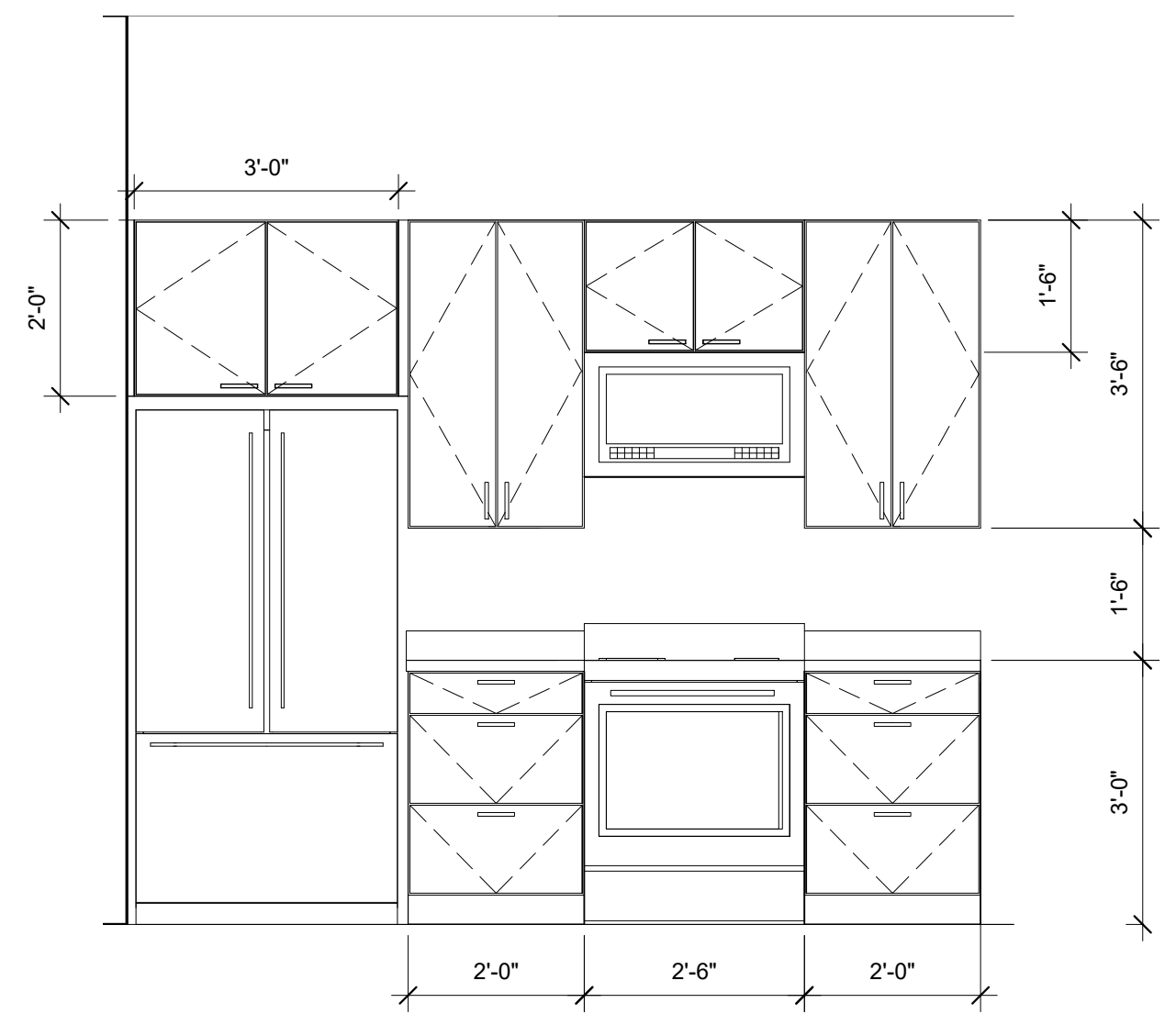
11 UNIT 201 & 301 BATH 2 ELEV. B  
 1/2" = 1'-0"



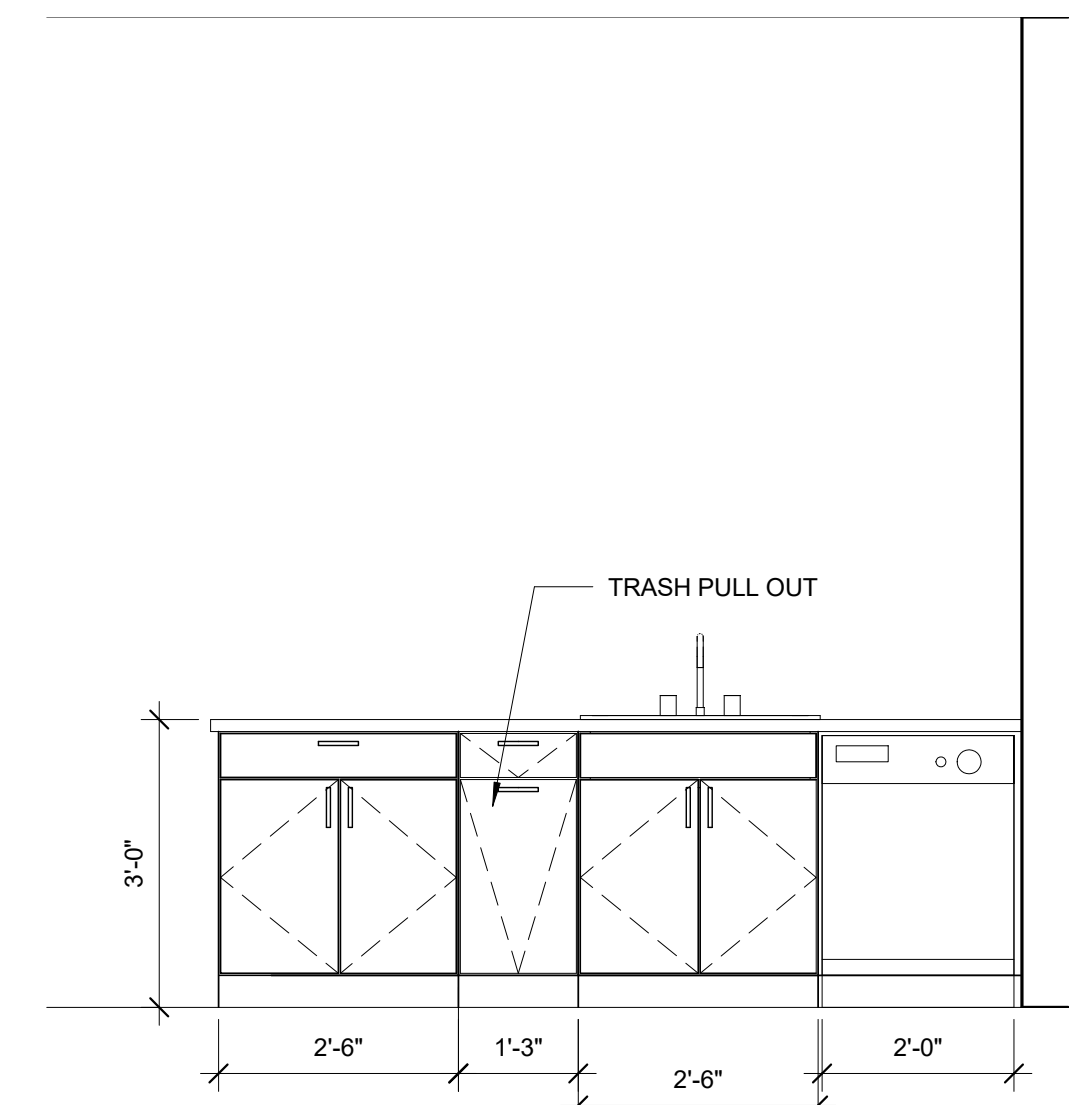
4 UNIT 201 & 301 BATH ELEV. A  
 1/2" = 1'-0"



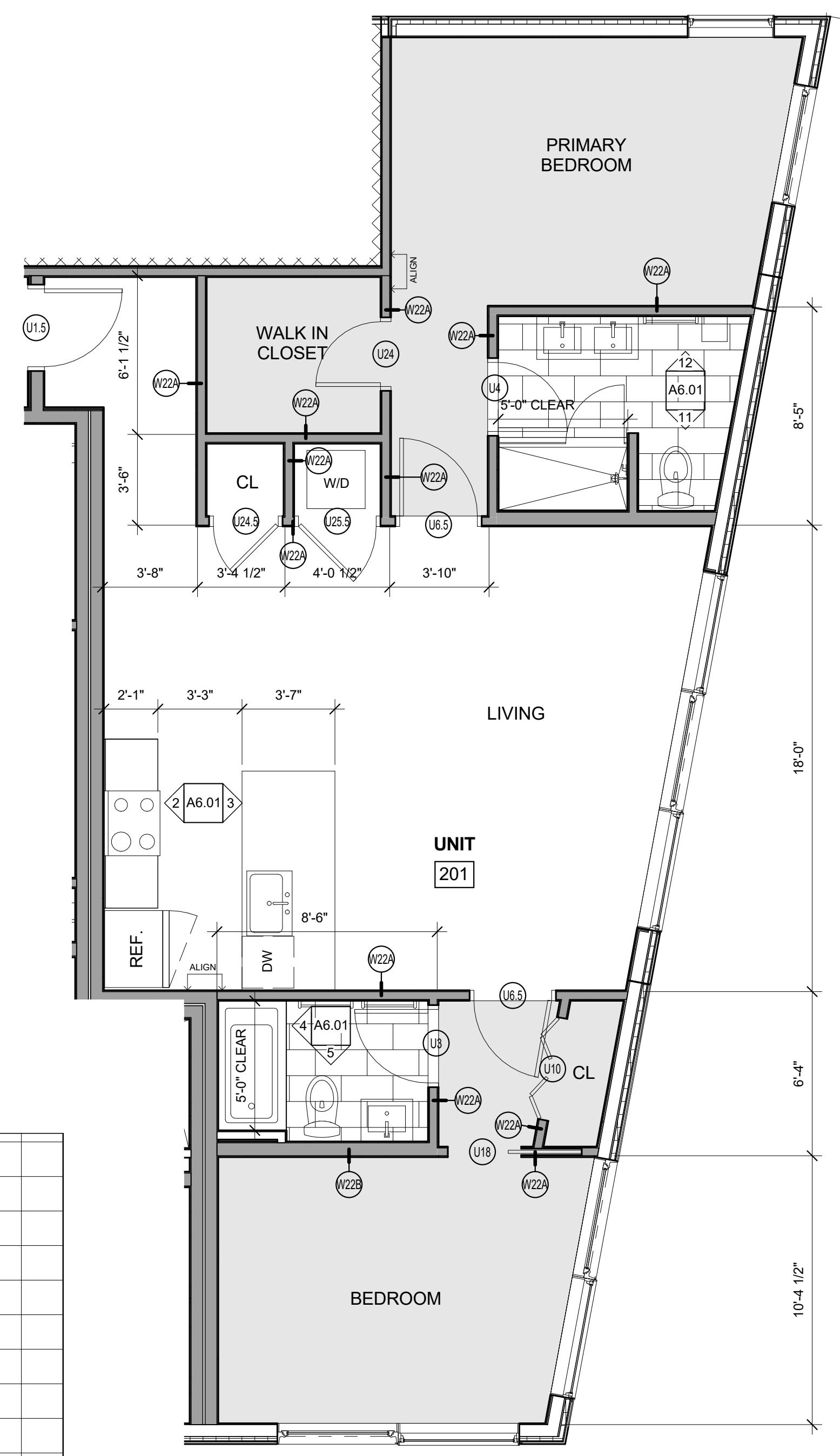
5 UNIT 201 & 301 BATH ELEV. B  
 1/2" = 1'-0"



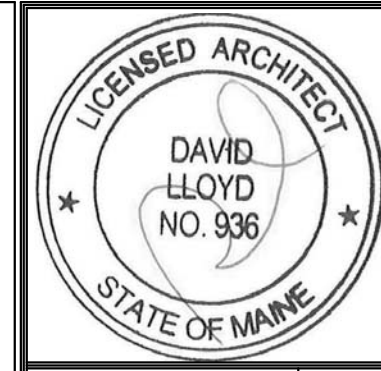
2 UNIT 201 & 301 KITCHEN ELEV. A  
 1/2" = 1'-0"



3 UNIT 201 & 301 KITCHEN ELEV. B  
 1/2" = 1'-0"



1 ENLARGED PLAN - UNITS 201 & 301  
 1/4" = 1'-0"



Prepared For:  
**NewHeight Group**  
 118 Congress Street #401  
 Portland, Maine

Consultant:  
**ARCHETYPE** architects  
 48 Union Wharf Portland, Maine 04101  
 (207) 772-6022 ARCHETYPE@ARCHETYPEA.COM

Project:  
**LUMINATO**  
 167 Newbury Street Portland, Maine

Date: JULY 21, 2016  
 Scale: As indicated  
 ENL. PLANS, INT. ELEV.  
 UNIT 201 & 301, 203, 303,  
 403 & 503

**A6.01**