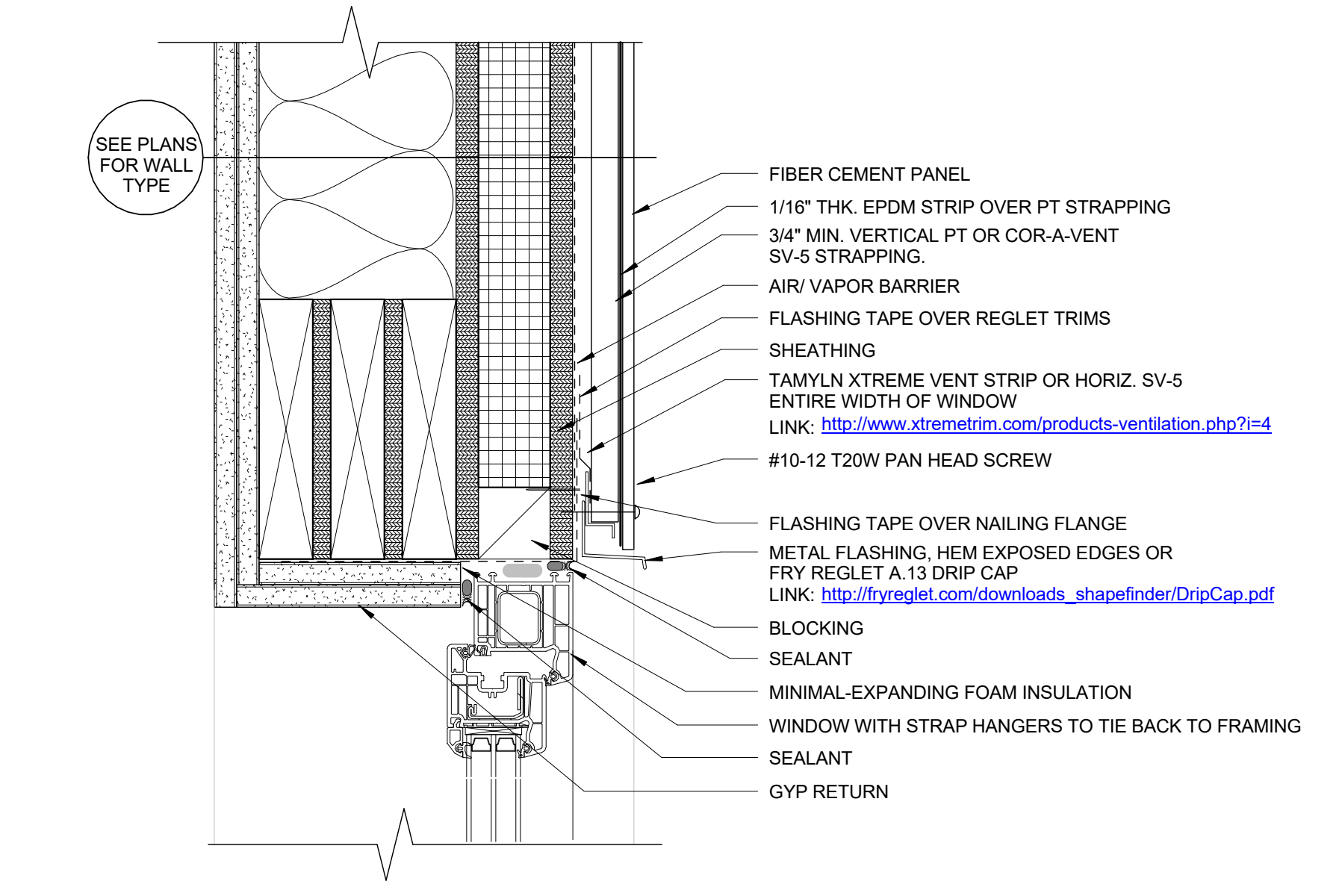
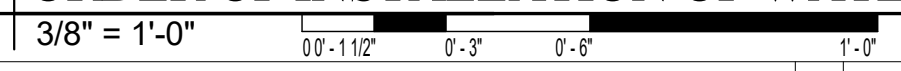


ORDER OF INSTALLATION OF WATER PROOFING AT WINDOWS. WATER PROOFING AT STOREFRONT AND DOORS USE STEPS 1-3

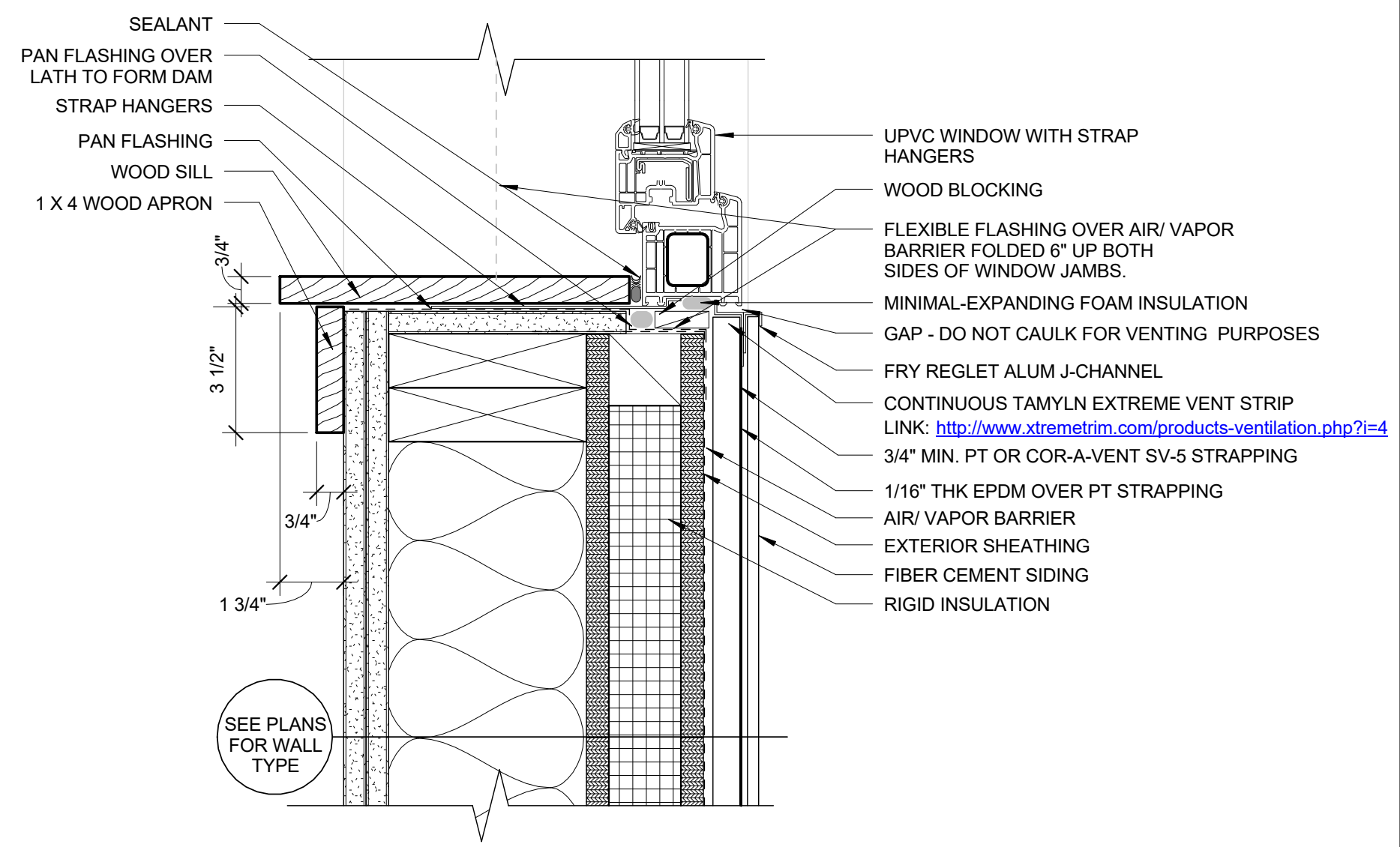
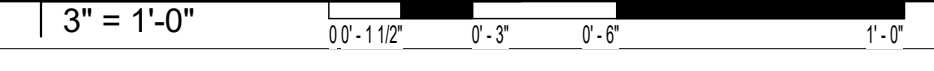
- NOTES:
 1. INSTALL AIR INFILTRATION BARRIER IN ORDER AS SHOWN BY NUMBERS.
 2. IF APPLICABLE, LEAVE RELEASE PAPER ON LOWER HALF OF SILL FLASHING UNTIL FUTURE TIE-IN.
 3. INSTALL FLASHING AND AIR INFILTRATION BARRIER TO FORM WATER SHEDDING LAPS
 4. COORDINATE WITH FLASHING REQUIREMENTS OF WINDOW MANUFACTURER
 5. FOLLOW MANUFACTURER'S RECOMMENDATIONS FOR INSTALLATION.

NOTE: MOCK-UP FIRST WINDOW TO BE APPROVED BY MSHA, AND ARCHITECT PRIOR TO ANY INSTALLATION

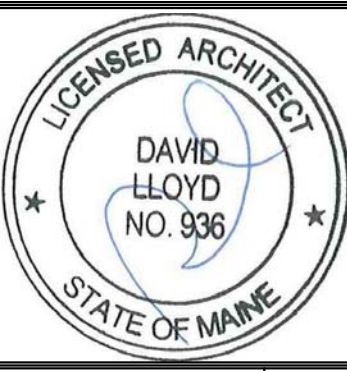
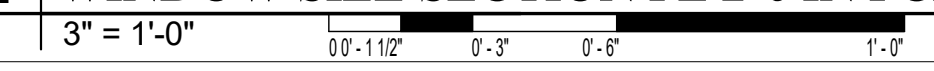
3 | ORDER OF INSTALLATION OF WATERPROOFING AT WINDOWS



1 | WINDOW HEAD SECTION FL 2-6 IN FCP - ALT #10



2 | WINDOW SILL SECTION FL 2-6 IN FCP - ALT #10



Prepared For:
NewHeight Group
 118 Congress Street #401
 Portland, Maine

Consultant:

Architect:
ARCHETYPE architects
 48 Union Wharf Portland, Maine 04101
 (207) 772-6022 ARCHETYPE@ARCHETYPEA.COM

Project:

LUMINATO

167 Newbury Street Portland, Maine

Revisions:

Date: JULY 21, 2016
 Scale: As indicated

EXTERIOR DETAILS - WINDOWS

A5.02