

Prepared For:  
NewHeight Group

Consultant:

Architect:  
**ARCHETYPE**  
architects  
48 Union Wharf Portland, Maine 04101  
(207) 772-6022 Fax (207) 772-4056

Project:  
**LUMINATO**

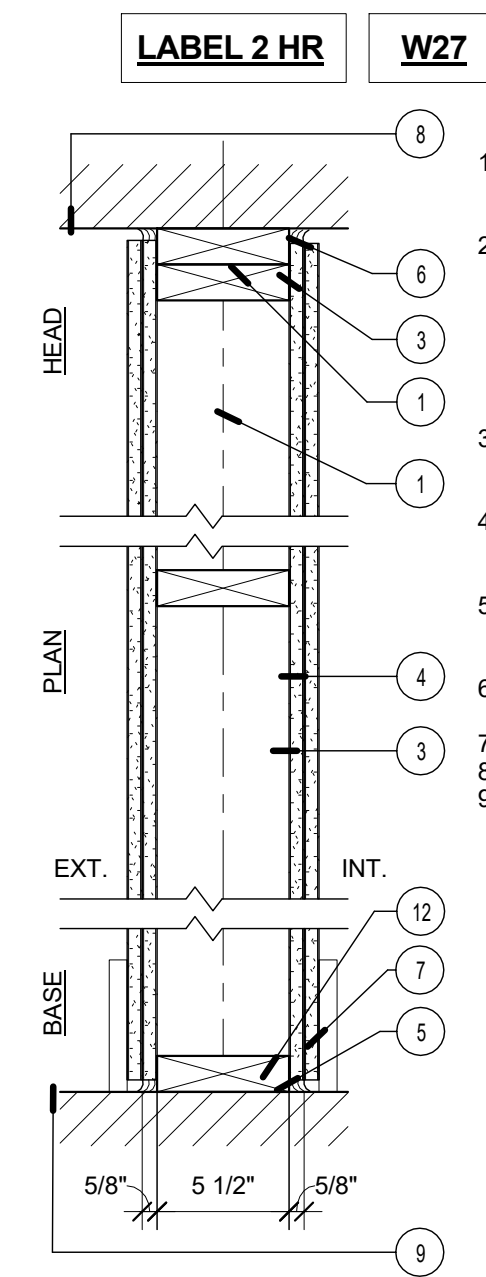
167 Newbury Street Portland, Maine

Revisions:

Date: JULY 21, 2016  
Scale: 1 1/2" = 1'-0"

WALL TYPES

A4.05



- LABEL 2 HR**    **W27**
- 2 HR BEARING FIRE BARRIER**  
DESIGN NUMBER - UL U301  
54 STC SOUND  
SOUND TEST: RAL-TL83-216
1. **WOOD FRAMING** - WOOD STUDS, NOM. 2 IN BY 6 IN., DOUBLE TOP PLATE AND SINGLE BASE PLATE, SEE STRUCTURAL FOR: STUD LAYOUT BRACING, AND FASTENERS.
  2. **TYPE X GYP BOARD** - 5/8 IN. THICK, 4 FT WIDE, SCREW ATTACHED BASE LAYER WITH 1 IN. LONG TYPE S STEEL SCREWS SPACED MAX 12 IN. OC. GYPSUM BOARD ON DIRECT ATTCHED SIDE SECURED TO STUDS WITH 1" LONG TYPE S-12 STEEL SCREWS SPACED 12" O.C. GYPSUM BOARD JOINTS ORIENTED VERTICALLY, LOCATED OVER STUDS AND OFFSET BETWEEN LAYERS. GYP HELD UP FROM FLOOR MIN 1/4" TO 3/8" FOR INSTALLATION OF ACOUSTIC SEALANT - TYPICAL.
  3. **TYPE X GYPSUM SHEATHING** - 5/8 IN. THICK GLASS MAT SHEATHING WITH FIRECODE CORE, SECUROCK OR SIMILAR. SHEETS INSTALLED HORIZONTALLY, JOINTS LOCATED ON CENTER OF STUDS.
  4. **JOINT TAPE AND COMPOUND - (NOT SHOWN)** VINYL DRY OR PREMIXED JOINT COMPOUND, APPLIED TO JOINTS AND SCREW HEADS; PAPER TAPE, 2" WIDE, EMBEDDED IN FIRST LAYER OF COMPOUND OVER ALL JOINTS.
  5. **CAULKING AND SEALANTS** - A BEAD OF ACOUSTICAL SEALANT APPLIED AROUND THE PARTITION PERIMETER FOR SOUND CONTROL, BOTH SIDES OF WALL.
  6. **BLOCKING - (NOT SHOWN)** WOOD BLOCKING AS NEEDED FOR OTHER TRADES. GC TO COORDINATE.
  7. **SCHEDULED BASE** - SEE FINISH SCHEDULE
  8. **UNDERSIDE OF STRUCTURE**
  9. **TOP OF STRUCTURE**