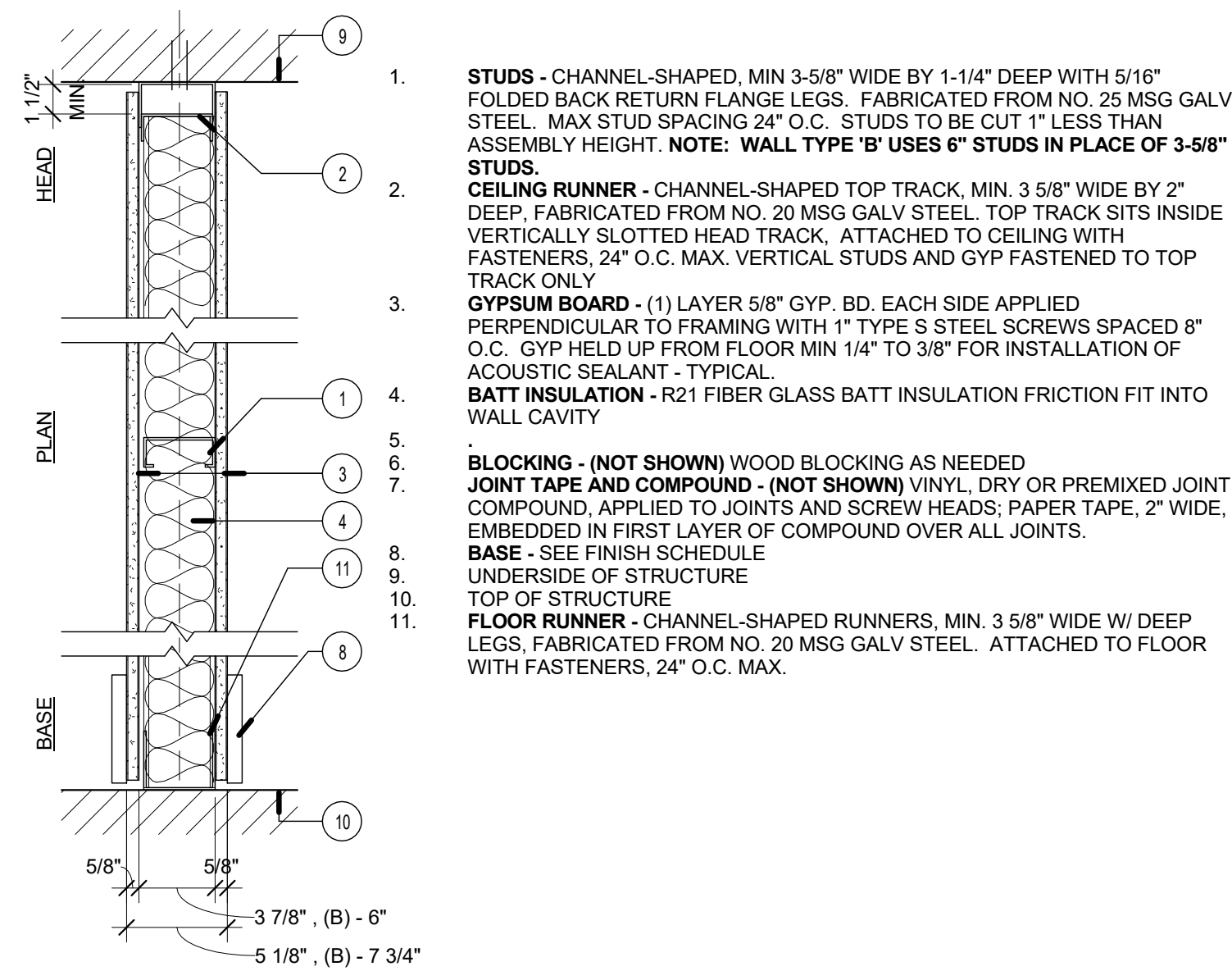
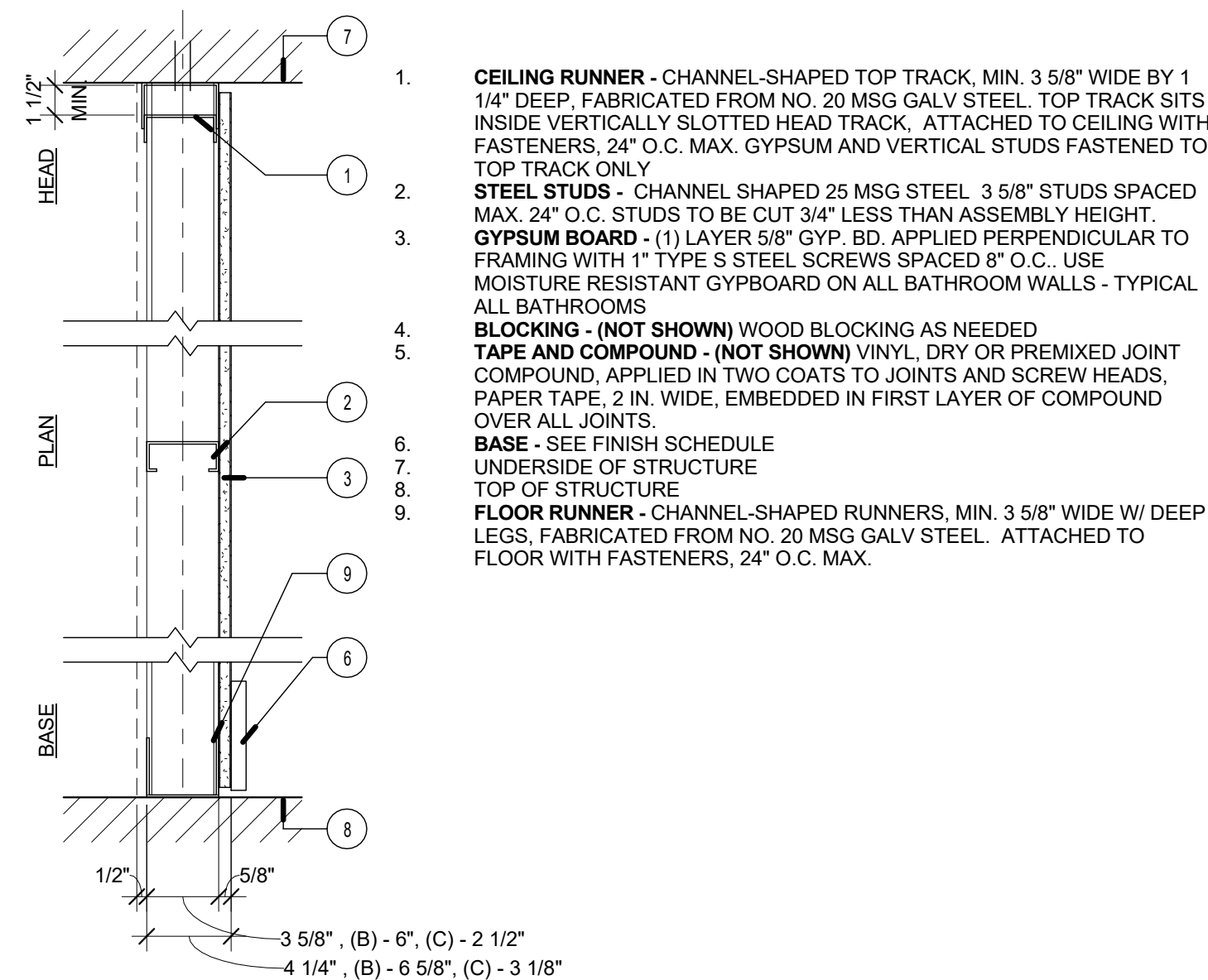


W26A	W26B	NON-RATED NON-BEARING INSULATED PARTITION DESIGN NUMBER - N/A
3 5/8"	6"	



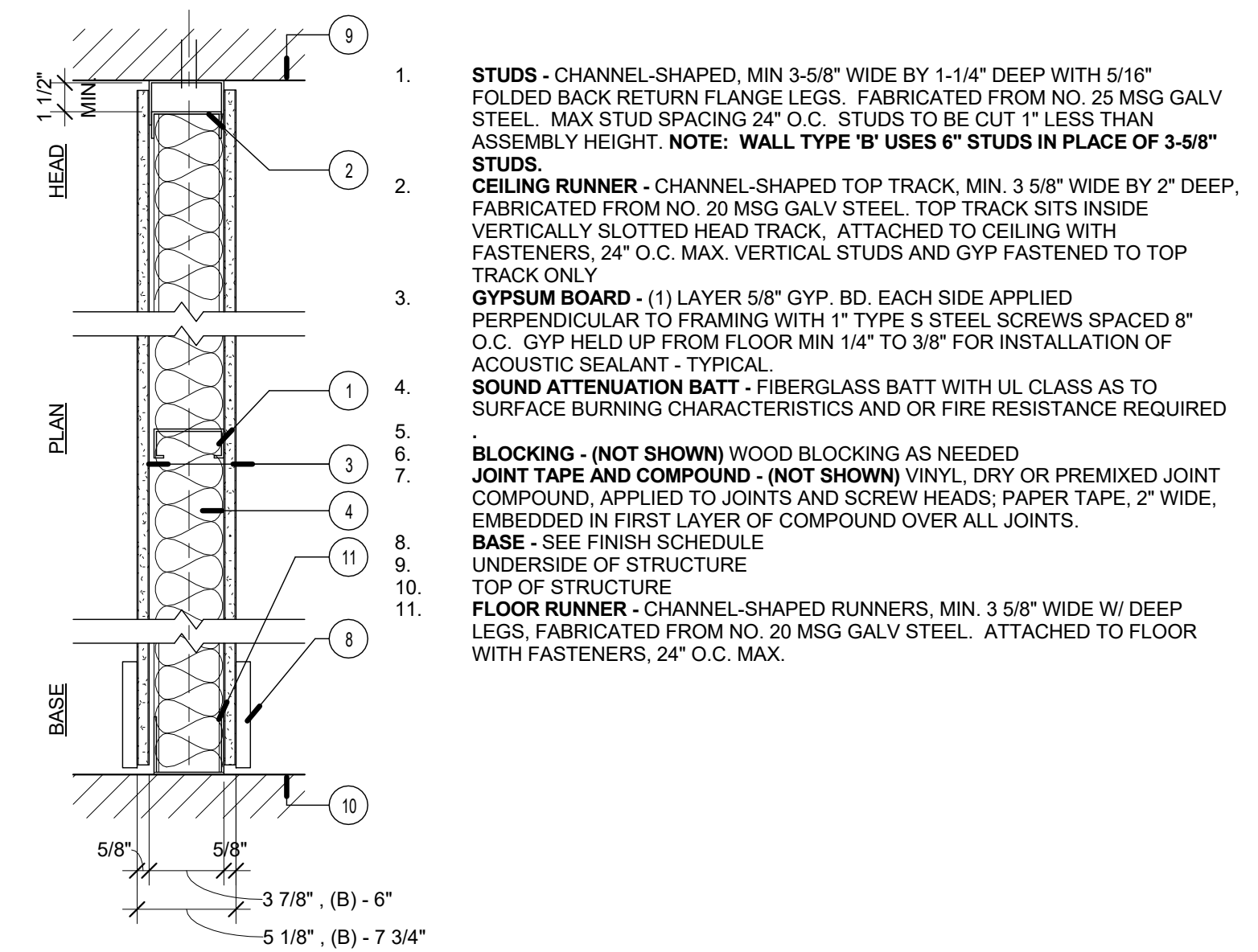
26 | WALL 26A&B - NON RATED - INSUL. PART.
1 1/2" = 1'-0"

W26C	W26A	W26B	NON-RATED NON-BEARING DESIGN NUMBER - N/A STC SOUND - N/A
2 1/2"	3 5/8"	6"	



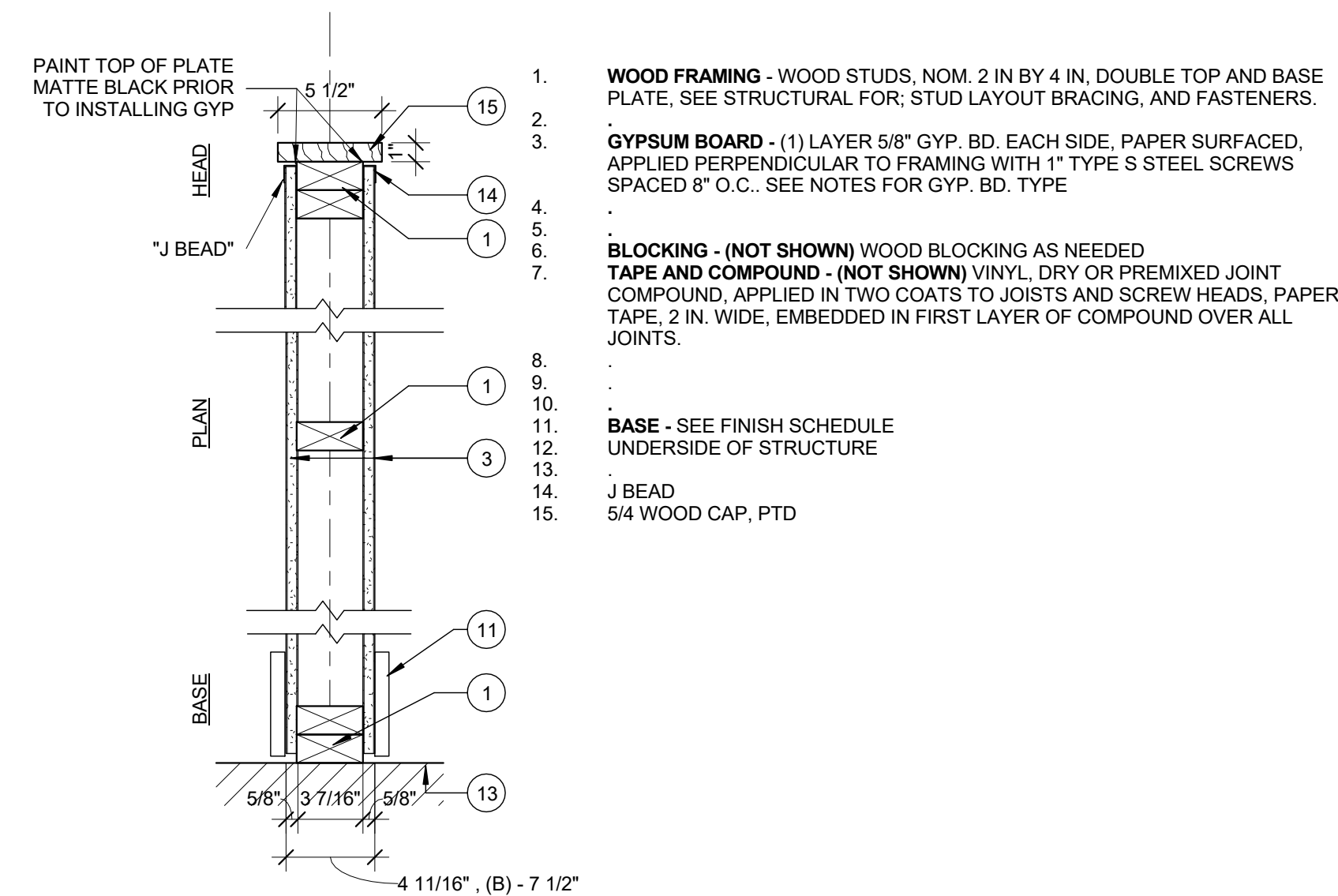
24 | WALL 24A&B - NON-RATED ONE-SIDED PARTITION
1 1/2" = 1'-0"

W22A	W22B	NON-RATED NON-BEARING ACOUSTICAL PARTITION DESIGN NUMBER - N/A 35 STC SOUND - RAL-TL-11-078
3 5/8"	6"	



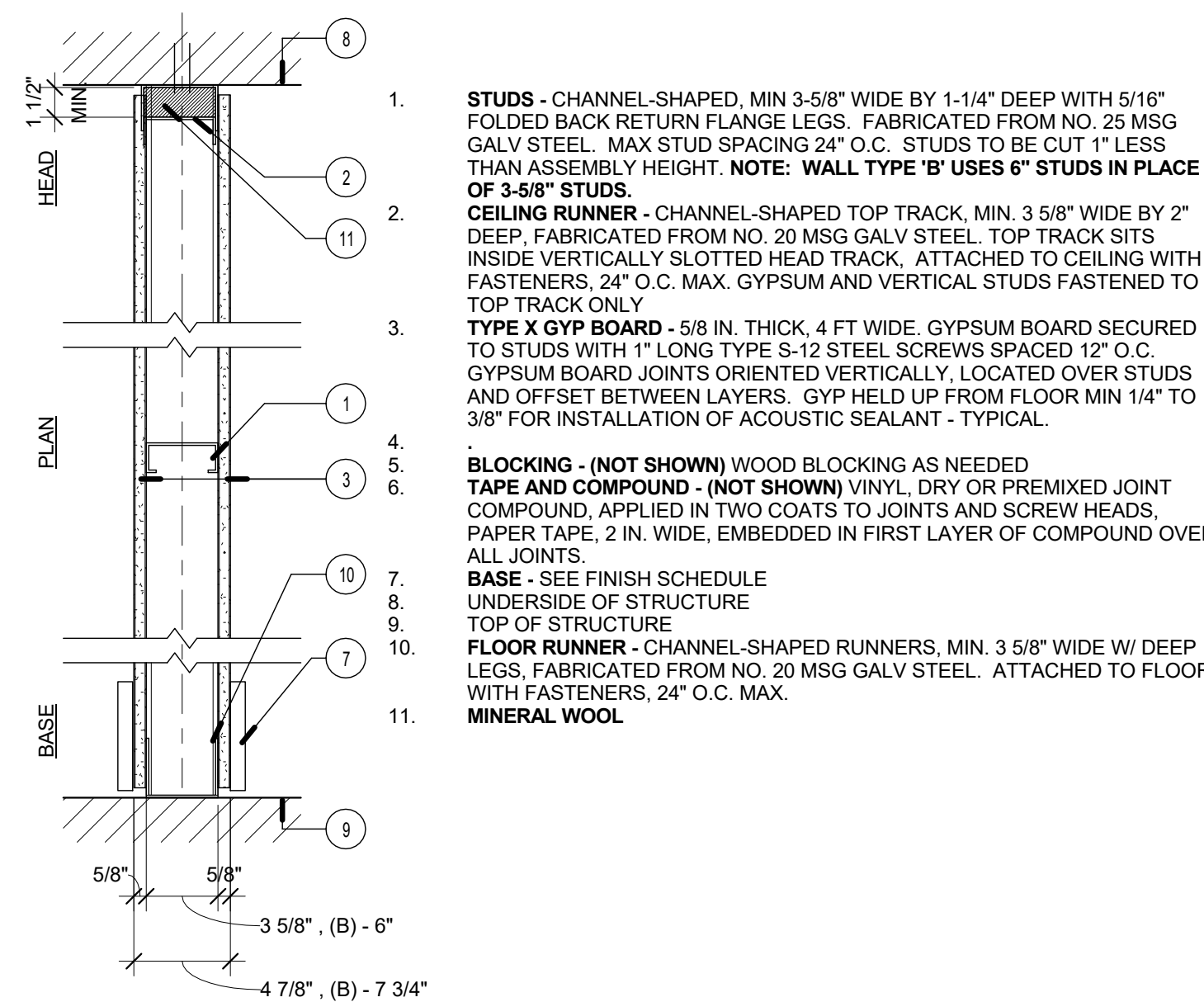
22 | WALL 22A&B - NON RATED - ACOUST. PART.
1 1/2" = 1'-0"

W25A	PARTIAL WALL AT PLATFORM ROOMS (HEIGHT VARIES SEE PLANS & INT. ELEV.)
2x4	



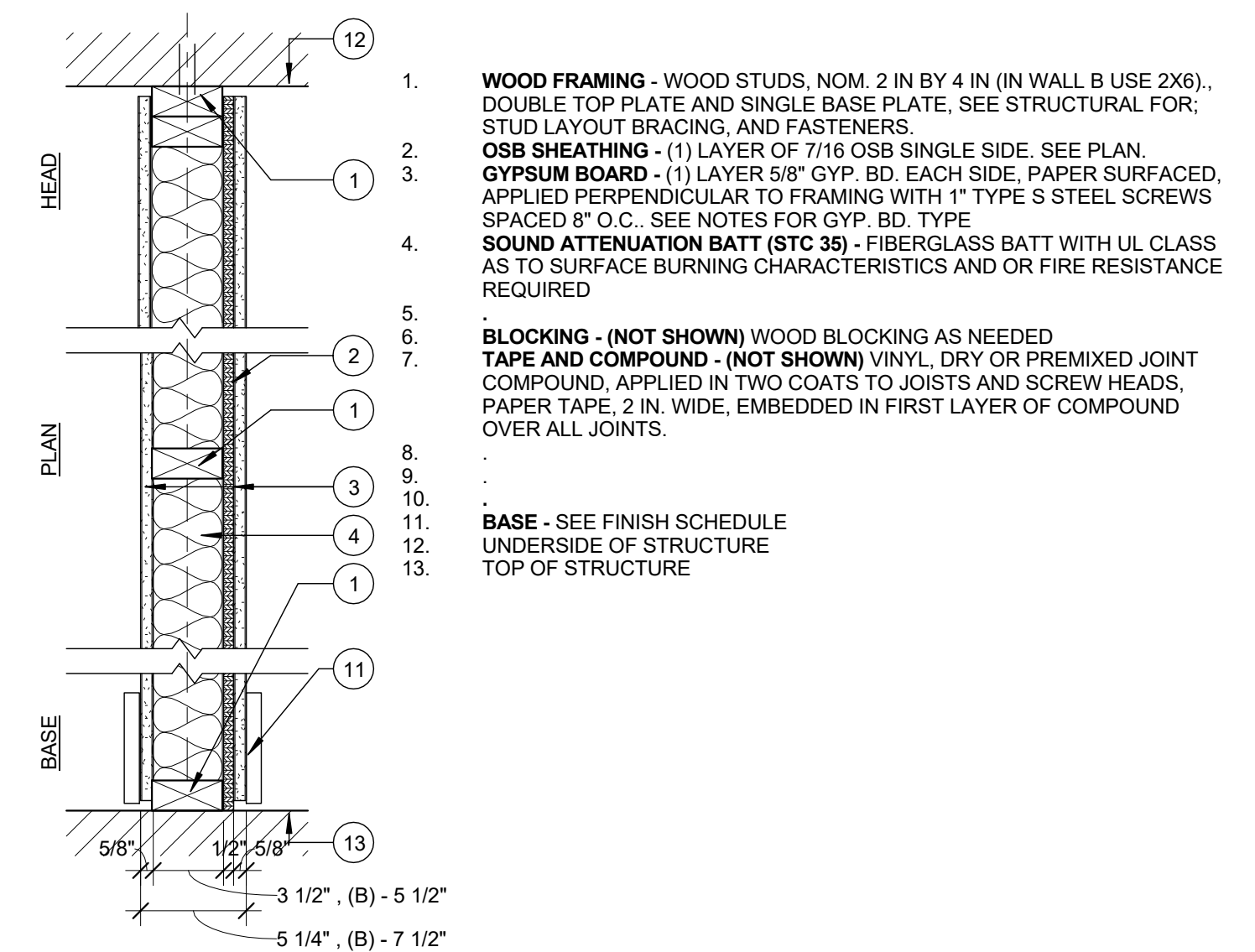
25 | WALL 25A - PARTIAL WALL AT PLATFORM ROOMS
1 1/2" = 1'-0"

LABEL 1 HR	W23A	W23B	1 HR NON-BEARING PARTITION DESIGN NUMBER - U419 SOUND - N/A
	3 5/8"	6"	



23 | WALL 23A&B - NON RATED PARTITION
1 1/2" = 1'-0"

W21A	W21B	1-HOUR RATED SHEAR/BEARING ACOUSTICAL PARTITION DESIGN NUMBER - GA FILE WP 3510 35 STC SOUND - RAL-TL-11-078
2x4	2x6	



21 | WALL 21A&B - 1 HR RATED - ACOUST./SHEAR PART.
1 1/2" = 1'-0"