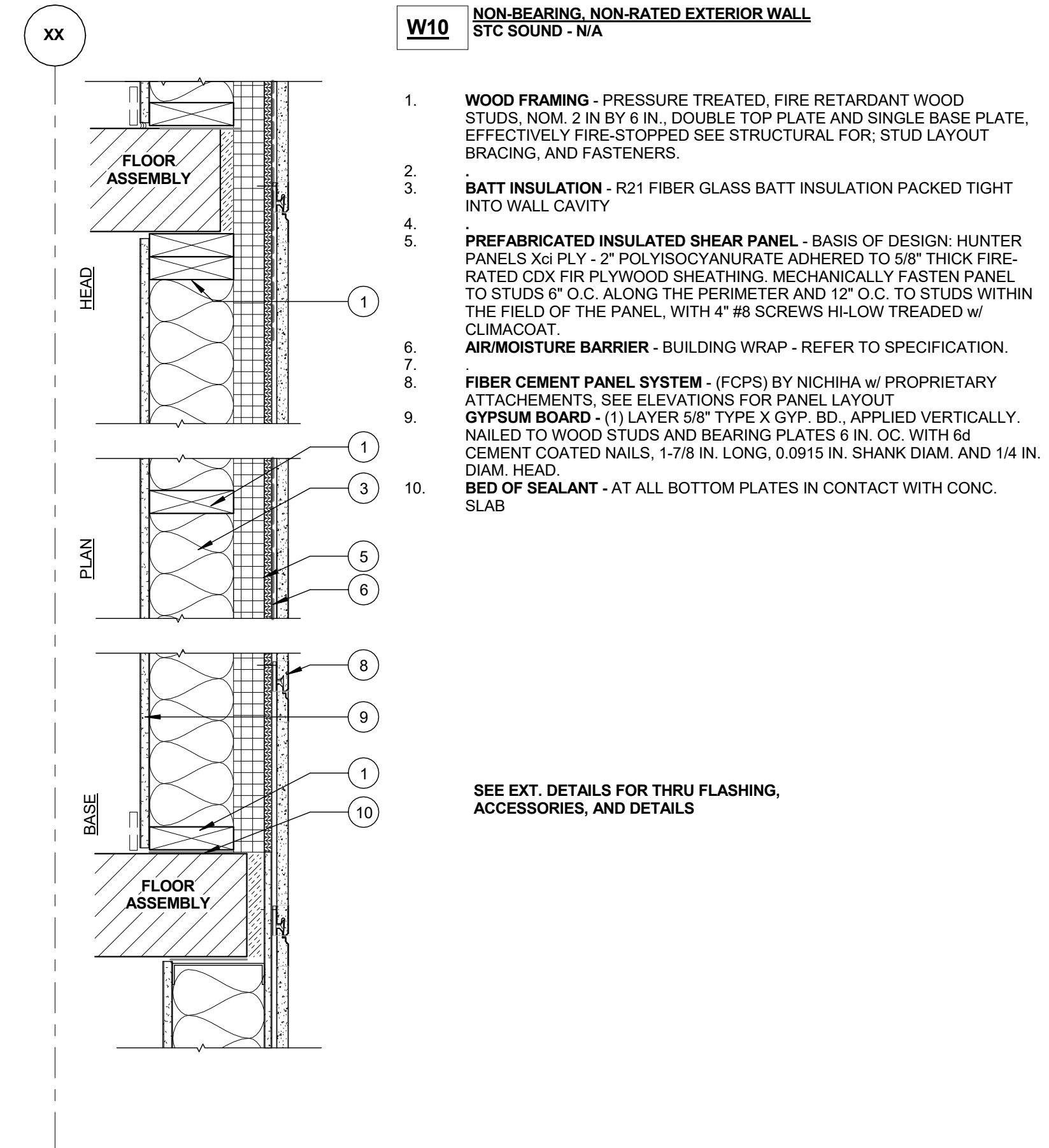
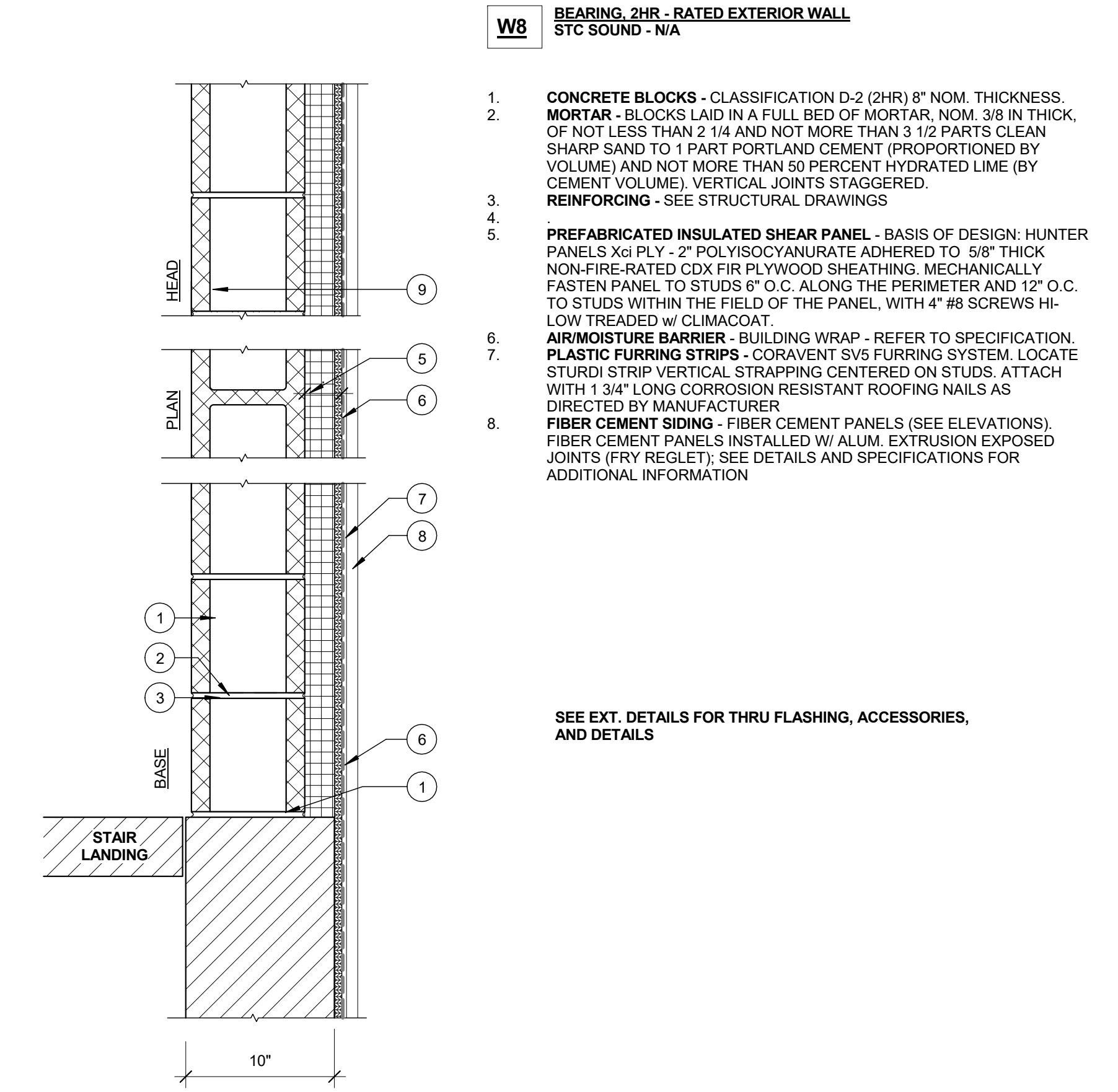


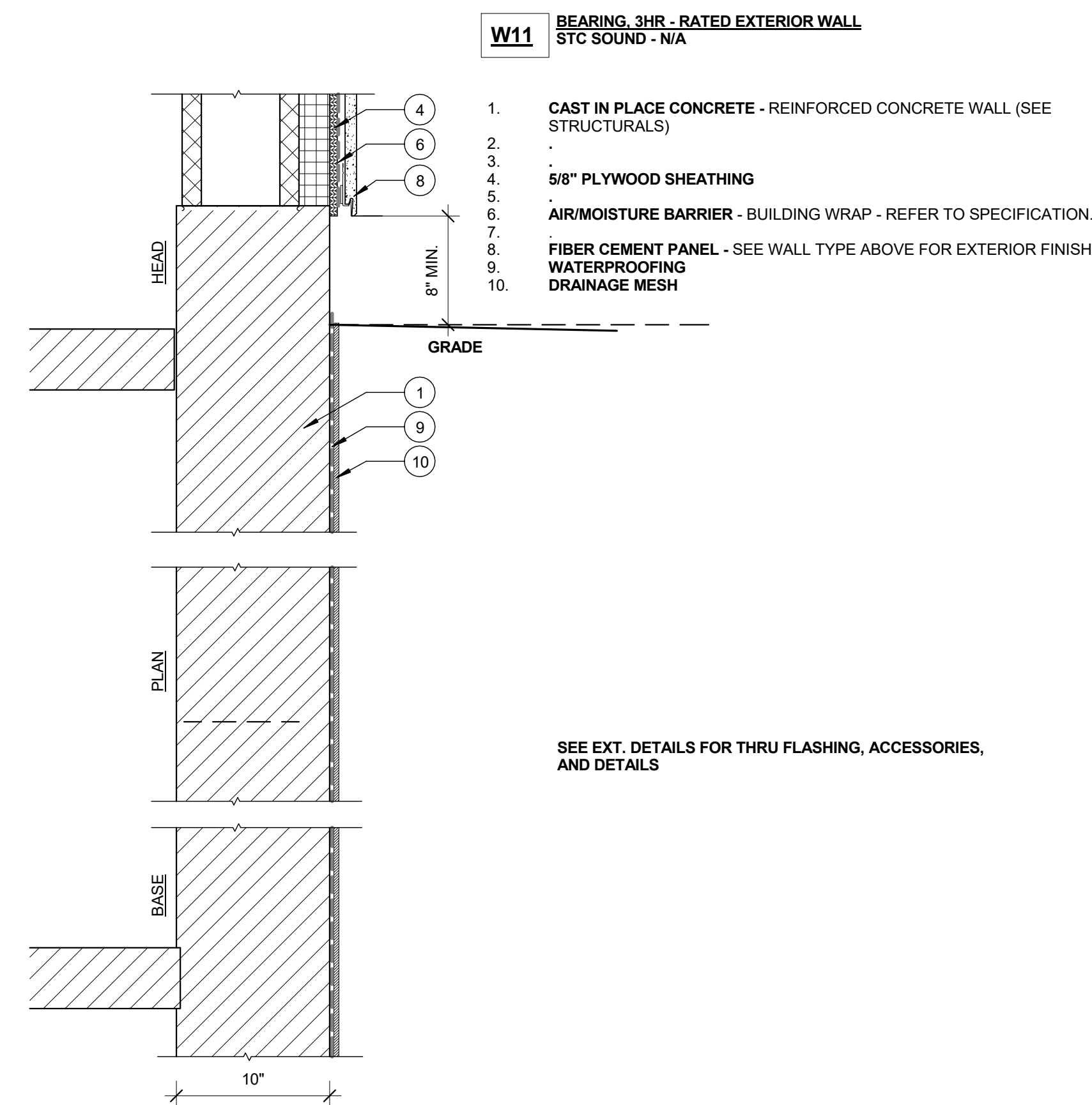
12 WALL 12 - EXT. WALL- FCB- LV 2-6 - NON BEARING - NON RATED
1 1/2" = 1'-0"



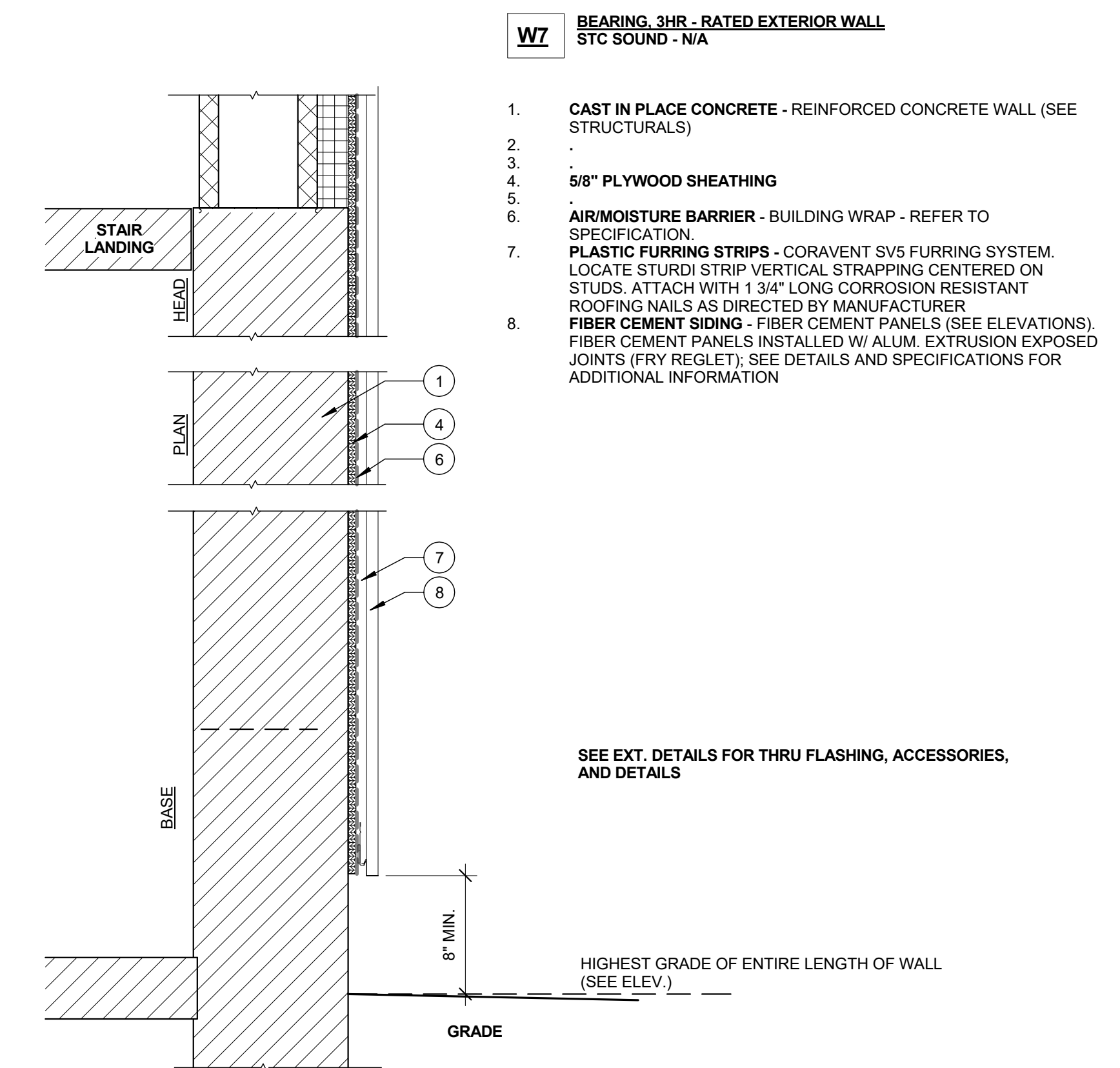
10 WALL 10-EXT. WALL-NICHIHA- LV. 2-6- NON BEARING- NON RATED
1 1/2" = 1'-0"



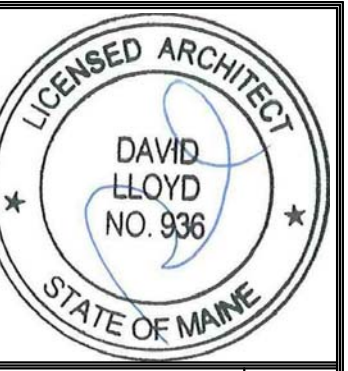
8 WALL 08 - EXT. WALL - FCB -STAIR - ELEV. TOWERS - LEV. 2 - 6
1 1/2" = 1'-0"



11 WALL 11 - EXT. WALL - CONCRETE RETAINING WALL
1 1/2" = 1'-0"



7 WALL 07 - EXT. WALL - FCB - STAIR - ELEV. TOWERS - GARAGE LEVELS
1 1/2" = 1'-0"



Prepared For:
NewHeight Group
118 Congress Street, Unit 401
Portland, Maine

Consultant:
ARCHETYPE architects
48 Union Wharf Portland, Maine 04101
(207) 772-6022 ARCHETYPE@ARCHETYPEPA.COM

Architect:
ARCHETYPE architects
48 Union Wharf Portland, Maine 04101
(207) 772-6022 ARCHETYPE@ARCHETYPEPA.COM

Project:
LUMINATO
167 Newbury Street Portland, Maine

Revisions:
Scale: 1 1/2" = 1'-0"
Date: JULY 21, 2016
WALL TYPES

A4.02