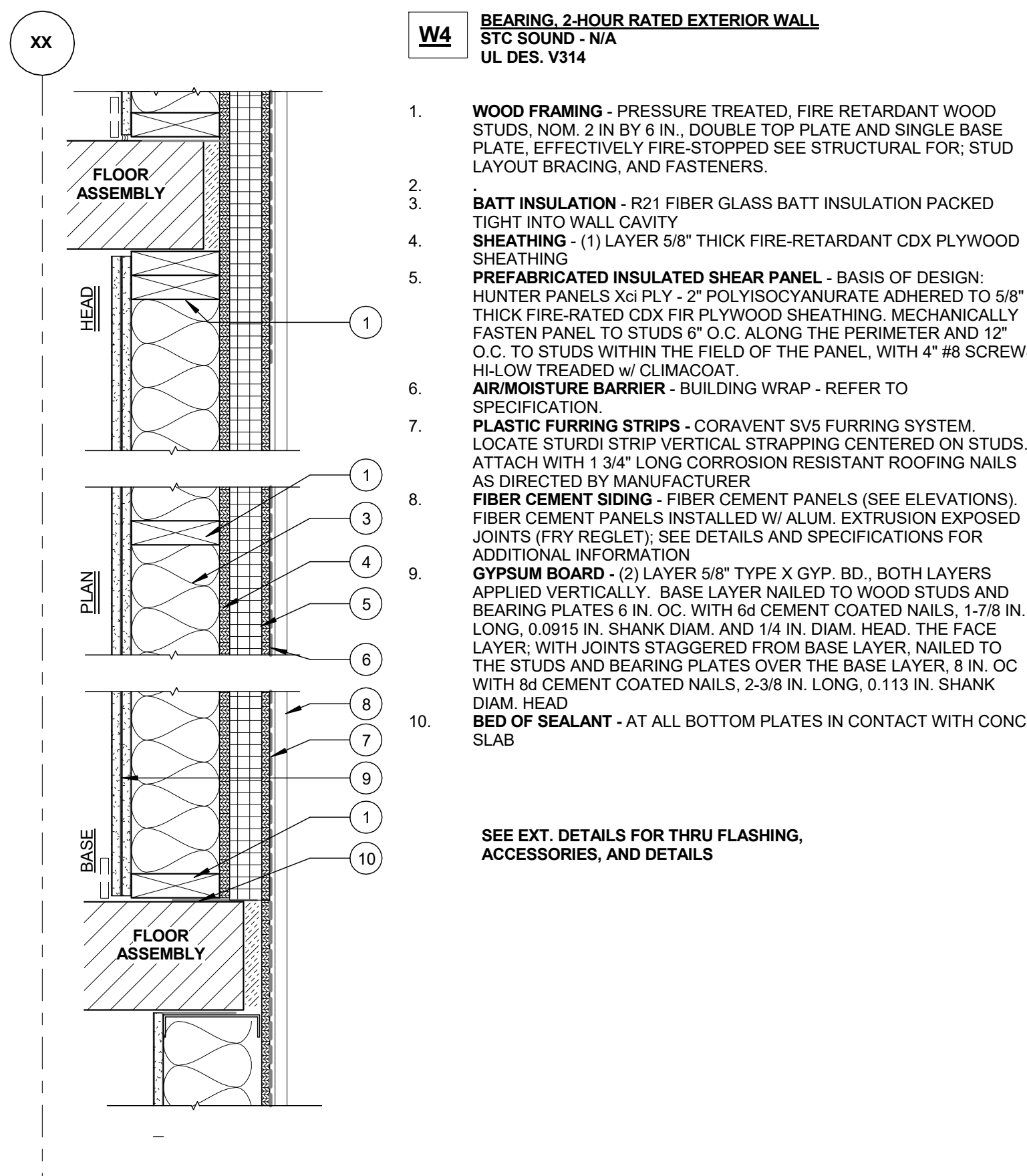


- W6 BEARING, 2HR - RATED EXTERIOR WALL**
STC SOUND - N/A
1. CONCRETE BLOCKS - CLASSIFICATION D-2 (2HR) 8" NOM. THICKNESS.
 2. MORTAR - BLOCKS LAID IN A FULL BED OF MORTAR, NOM. 3/8 IN THICK, OF NOT LESS THAN 2 1/4 AND NOT MORE THAN 3 1/2 PARTS CLEAN SHARP SAND TO 1 PART PORTLAND CEMENT (PROPORTIONED BY VOLUME) AND NOT MORE THAN 50 PERCENT HYDRATED LIME (BY CEMENT VOLUME). VERTICAL JOINTS STAGGERED.
 3. REINFORCING - SEE STRUCTURAL DRAWINGS
 4. PREFABRICATED INSULATED SHEAR PANEL - BASIS OF DESIGN: HUNTER PANELS XGI PLY - 2" POLYISOCYANURATE ADHERED TO 5/8" THICK NON-FIRE-RATED CDX FIR PLYWOOD SHEATHING. MECHANICALLY FASTEN PANEL TO STUDS 6" O.C. ALONG THE PERIMETER AND 12" O.C. TO STUDS WITHIN THE FIELD OF THE PANEL, WITH 4" #8 SCREWS HI-LOW TREADED w/ CLIMACOAT.
 5. AIR/MOISTURE BARRIER - BUILDING WRAP - REFER TO SPECIFICATION.
 6. FIBER CEMENT PANEL SYSTEM - (FCPS) BY NICHIIHA w/ PROPRIETARY ATTACHEMENTS, SEE ELEVATIONS FOR PANEL LAYOUT
 - 7.
 - 8.

SEE EXT. DETAILS FOR THRU FLASHING, ACCESSORIES, AND DETAILS

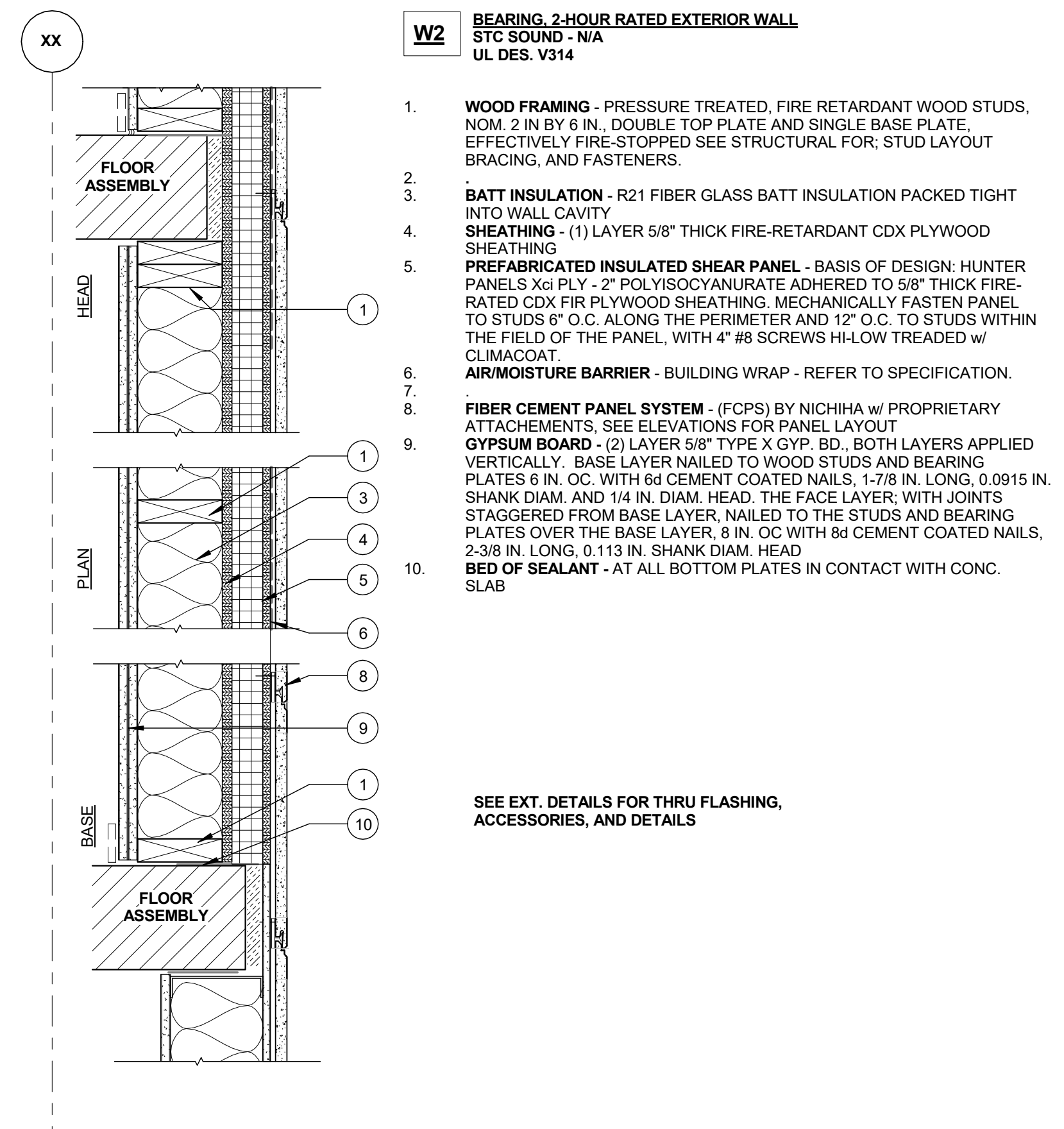
6 WALL 06 - EXT. WALL - NICHIIHA - STAIR TOWER - LEV. 2 - 6
1 1/2" = 1'-0"



- W4 BEARING, 2-HOUR RATED EXTERIOR WALL**
STC SOUND - N/A
UL DES. V314
1. WOOD FRAMING - PRESSURE TREATED, FIRE RETARDANT WOOD STUDS, NOM. 2 IN BY 6 IN., DOUBLE TOP PLATE AND SINGLE BASE PLATE. EFFECTIVELY FIRE-STOPPED SEE STRUCTURAL FOR; STUD LAYOUT BRACING, AND FASTENERS.
 2. BATT INSULATION - R21 FIBER GLASS BATT INSULATION PACKED TIGHT INTO WALL CAVITY
 3. SHEATHING - (1) LAYER 5/8" THICK FIRE-RETARDANT CDX PLYWOOD SHEATHING
 4. PREFABRICATED INSULATED SHEAR PANEL - BASIS OF DESIGN: HUNTER PANELS XGI PLY - 2" POLYISOCYANURATE ADHERED TO 5/8" THICK FIRE-RATED CDX FIR PLYWOOD SHEATHING. MECHANICALLY FASTEN PANEL TO STUDS 6" O.C. ALONG THE PERIMETER AND 12" O.C. TO STUDS WITHIN THE FIELD OF THE PANEL, WITH 4" #8 SCREWS HI-LOW TREADED w/ CLIMACOAT.
 5. AIR/MOISTURE BARRIER - BUILDING WRAP - REFER TO SPECIFICATION
 6. PLASTIC FURRING STRIPS - CORAVENT SV5 FURRING SYSTEM. LOCATE STURDI STRIP VERTICAL STRAPPING CENTERED ON STUDS. ATTACH WITH 1 3/4" LONG CORROSION RESISTANT ROOFING NAILS AS DIRECTED BY MANUFACTURER
 7. FIBER CEMENT SIDING - FIBER CEMENT PANELS (SEE ELEVATIONS)
 8. GYPSUM BOARD - (2) LAYER 5/8" TYPE X GYP. BD., BOTH LAYERS APPLIED VERTICALLY. BASE LAYER NAILED TO WOOD STUDS AND BEARING PLATES 6 IN. OC. WITH 6d CEMENT COATED NAILS, 1-7/8 IN. LONG, 0.0915 IN. SHANK DIAM. AND 1/4 IN. DIAM. HEAD. THE FACE LAYER, WITH JOINTS STAGGERED FROM BASE LAYER, NAILED TO THE STUDS AND BEARING PLATES OVER THE BASE LAYER, 8 IN. OC WITH 8d CEMENT COATED NAILS, 2-3/8 IN. LONG, 0.113 IN. SHANK DIAM. HEAD
 9. BED OF SEALANT - AT ALL BOTTOM PLATES IN CONTACT WITH CONC. SLAB
 - 10.

SEE EXT. DETAILS FOR THRU FLASHING, ACCESSORIES, AND DETAILS

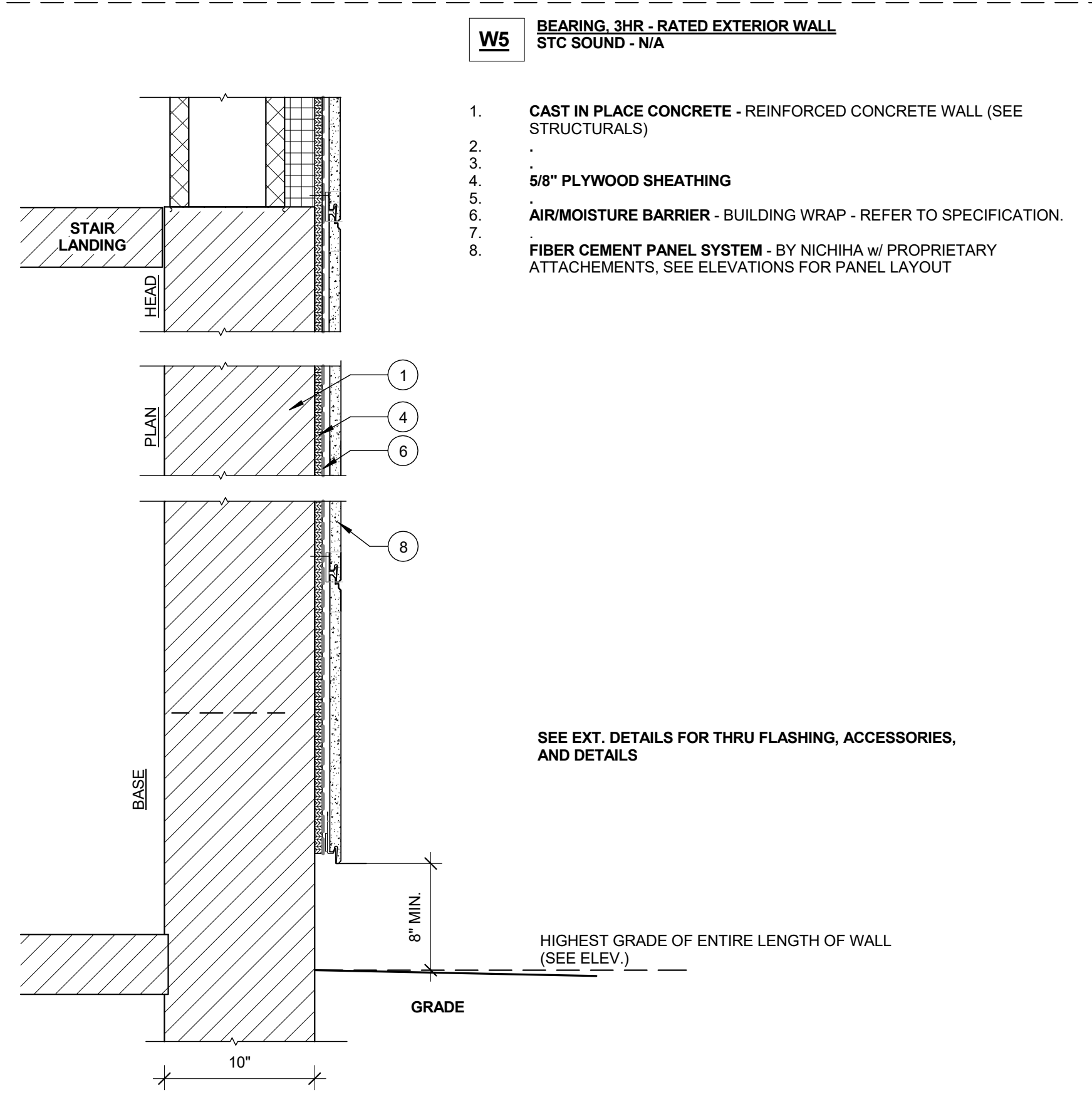
4 WALL 04 - EXT. WALL - FCB - LEVELS 2 - 6
1 1/2" = 1'-0"



- W2 BEARING, 2-HOUR RATED EXTERIOR WALL**
STC SOUND - N/A
UL DES. V314
1. WOOD FRAMING - PRESSURE TREATED, FIRE RETARDANT WOOD STUDS, NOM. 2 IN BY 6 IN., DOUBLE TOP PLATE AND SINGLE BASE PLATE. EFFECTIVELY FIRE-STOPPED SEE STRUCTURAL FOR; STUD LAYOUT BRACING, AND FASTENERS.
 2. BATT INSULATION - R21 FIBER GLASS BATT INSULATION PACKED TIGHT INTO WALL CAVITY
 3. SHEATHING - (1) LAYER 5/8" THICK FIRE-RETARDANT CDX PLYWOOD SHEATHING
 4. PREFABRICATED INSULATED SHEAR PANEL - BASIS OF DESIGN: HUNTER PANELS XGI PLY - 2" POLYISOCYANURATE ADHERED TO 5/8" THICK FIRE-RATED CDX FIR PLYWOOD SHEATHING. MECHANICALLY FASTEN PANEL TO STUDS 6" O.C. ALONG THE PERIMETER AND 12" O.C. TO STUDS WITHIN THE FIELD OF THE PANEL, WITH 4" #8 SCREWS HI-LOW TREADED w/ CLIMACOAT.
 5. AIR/MOISTURE BARRIER - BUILDING WRAP - REFER TO SPECIFICATION.
 6. FIBER CEMENT PANEL SYSTEM - (FCPS) BY NICHIIHA w/ PROPRIETARY ATTACHEMENTS, SEE ELEVATIONS FOR PANEL LAYOUT
 7. GYPSUM BOARD - (2) LAYER 5/8" TYPE X GYP. BD., BOTH LAYERS APPLIED VERTICALLY. BASE LAYER NAILED TO WOOD STUDS AND BEARING PLATES 6 IN. OC. WITH 6d CEMENT COATED NAILS, 1-7/8 IN. LONG, 0.0915 IN. SHANK DIAM. AND 1/4 IN. DIAM. HEAD. THE FACE LAYER, WITH JOINTS STAGGERED FROM BASE LAYER, NAILED TO THE STUDS AND BEARING PLATES OVER THE BASE LAYER, 8 IN. OC WITH 8d CEMENT COATED NAILS, 2-3/8 IN. LONG, 0.113 IN. SHANK DIAM. HEAD
 8. BED OF SEALANT - AT ALL BOTTOM PLATES IN CONTACT WITH CONC. SLAB
 - 9.
 - 10.

SEE EXT. DETAILS FOR THRU FLASHING, ACCESSORIES, AND DETAILS

2 WALL 02 - EXT. WALL - NICHIIHA - LEVELS 2 - 6
1 1/2" = 1'-0"

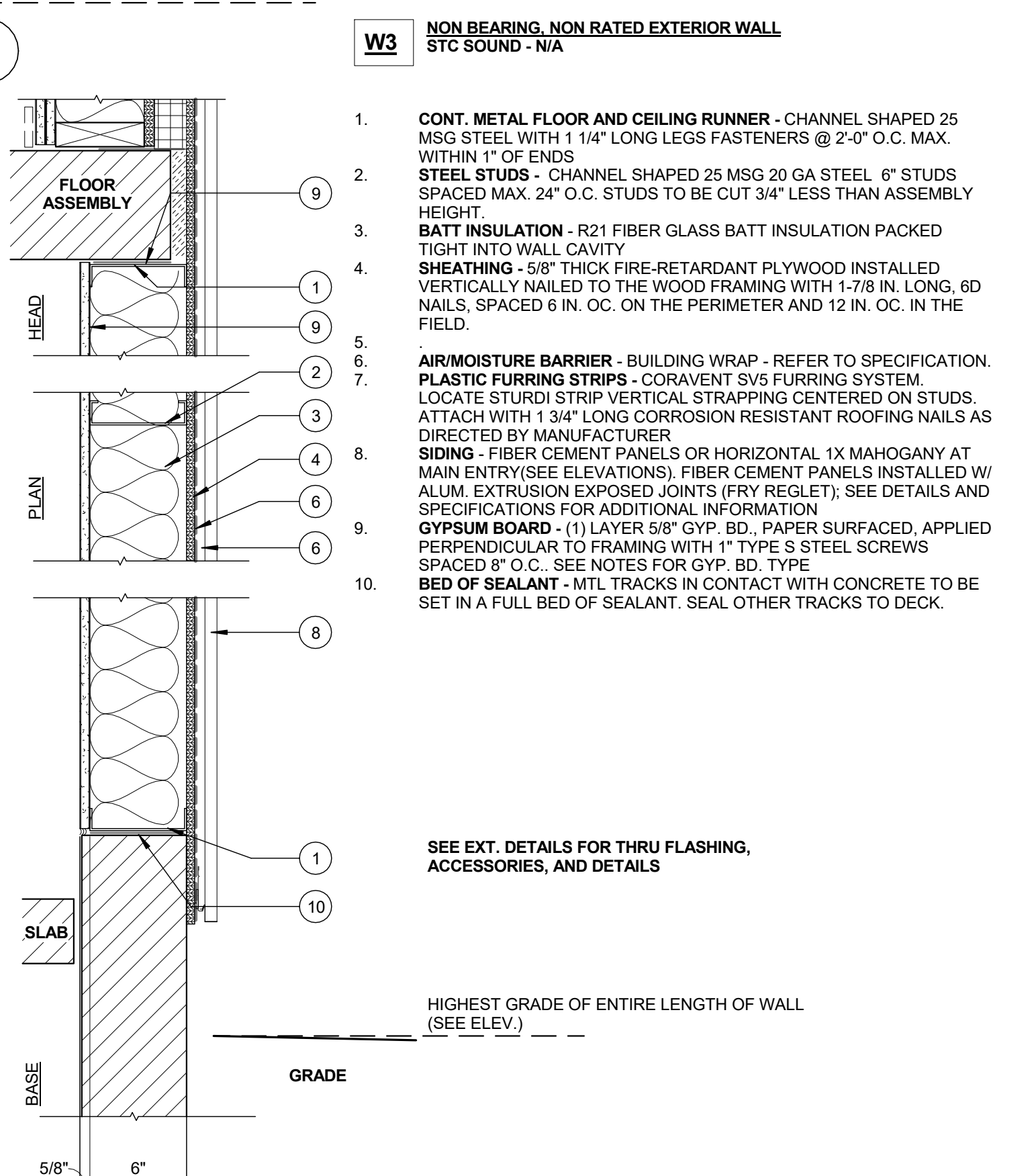


- W5 BEARING, 3HR - RATED EXTERIOR WALL**
STC SOUND - N/A
1. CAST IN PLACE CONCRETE - REINFORCED CONCRETE WALL (SEE STRUCTURALS)
 - 2.
 3. 5/8" PLYWOOD SHEATHING
 - 4.
 5. AIR/MOISTURE BARRIER - BUILDING WRAP - REFER TO SPECIFICATION.
 6. FIBER CEMENT PANEL SYSTEM - BY NICHIIHA w/ PROPRIETARY ATTACHEMENTS, SEE ELEVATIONS FOR PANEL LAYOUT
 - 7.
 - 8.

SEE EXT. DETAILS FOR THRU FLASHING, ACCESSORIES, AND DETAILS

HIGHEST GRADE OF ENTIRE LENGTH OF WALL (SEE ELEV.)

5 WALL 05 - EXT. WALL - NICHIIHA - STAIR TOWER - GARAGE LEVELS
1 1/2" = 1'-0"

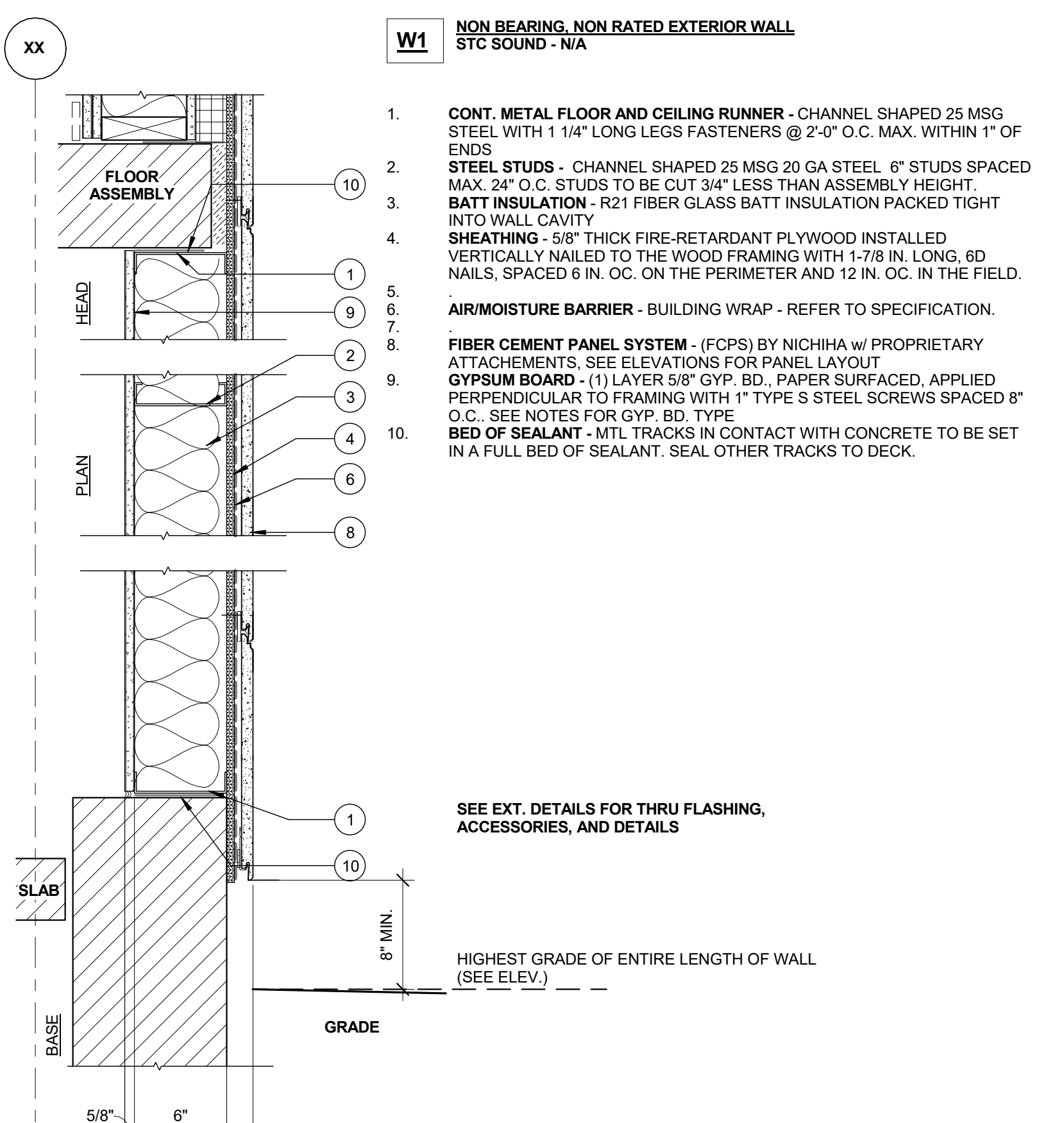


- W3 NON BEARING, NON RATED EXTERIOR WALL**
STC SOUND - N/A
1. CONT. METAL FLOOR AND CEILING RUNNER - CHANNEL SHAPED 25 MSG STEEL WITH 1 1/4" LONG LEGS FASTENERS @ 2'-0" O.C. MAX. WITHIN 1" OF ENDS
 2. STEEL STUDS - CHANNEL SHAPED 25 MSG 20 GA STEEL 6" STUDS SPACED MAX. 24" O.C. STUDS TO BE CUT 3/4" LESS THAN ASSEMBLY HEIGHT
 3. BATT INSULATION - R21 FIBER GLASS BATT INSULATION PACKED TIGHT INTO WALL CAVITY
 4. SHEATHING - 5/8" THICK FIRE-RETARDANT PLYWOOD INSTALLED VERTICALLY NAILED TO THE WOOD FRAMING WITH 1-7/8 IN. LONG, 6D NAILS, SPACED 6 IN. OC. ON THE PERIMETER AND 12 IN. OC. IN THE FIELD.
 5. AIR/MOISTURE BARRIER - BUILDING WRAP - REFER TO SPECIFICATION.
 6. PLASTIC FURRING STRIPS - CORAVENT SV5 FURRING SYSTEM. LOCATE STURDI STRIP VERTICAL STRAPPING CENTERED ON STUDS. ATTACH WITH 1 3/4" LONG CORROSION RESISTANT ROOFING NAILS AS DIRECTED BY MANUFACTURER
 7. SIDING - FIBER CEMENT PANELS OR HORIZONTAL 1X MAHOGANY AT MAIN ENTRY (SEE ELEVATIONS). FIBER CEMENT PANELS INSTALLED W/ ALUM. EXTRUSION EXPOSED JOINTS (FRY REGLET); SEE DETAILS AND SPECIFICATIONS FOR ADDITIONAL INFORMATION
 8. GYPSUM BOARD - (1) LAYER 5/8" GYP. BD., PAPER SURFACED, APPLIED PERPENDICULAR TO FRAMING WITH 1" TYPE S STEEL SCREWS SPACED 8" O.C. SEE NOTES FOR GYP. BD. TYPE
 9. BED OF SEALANT - MTL TRACKS IN CONTACT WITH CONCRETE TO BE SET IN A FULL BED OF SEALANT. SEAL OTHER TRACKS TO DECK.
 - 10.

SEE EXT. DETAILS FOR THRU FLASHING, ACCESSORIES, AND DETAILS

HIGHEST GRADE OF ENTIRE LENGTH OF WALL (SEE ELEV.)

3 WALL 03 - EXT. WALL - FCB - GARAGE LEVELS
1 1/2" = 1'-0"



- W1 NON BEARING, NON RATED EXTERIOR WALL**
STC SOUND - N/A
1. CONT. METAL FLOOR AND CEILING RUNNER - CHANNEL SHAPED 25 MSG STEEL WITH 1 1/4" LONG LEGS FASTENERS @ 2'-0" O.C. MAX. WITHIN 1" OF ENDS
 2. STEEL STUDS - CHANNEL SHAPED 25 MSG 20 GA STEEL 6" STUDS SPACED MAX. 24" O.C. STUDS TO BE CUT 3/4" LESS THAN ASSEMBLY HEIGHT
 3. BATT INSULATION - R21 FIBER GLASS BATT INSULATION PACKED TIGHT INTO WALL CAVITY
 4. SHEATHING - 5/8" THICK FIRE-RETARDANT PLYWOOD INSTALLED VERTICALLY NAILED TO THE WOOD FRAMING WITH 1-7/8 IN. LONG, 6D NAILS, SPACED 6 IN. OC. ON THE PERIMETER AND 12 IN. OC. IN THE FIELD.
 5. AIR/MOISTURE BARRIER - BUILDING WRAP - REFER TO SPECIFICATION.
 6. FIBER CEMENT PANEL SYSTEM - (FCPS) BY NICHIIHA w/ PROPRIETARY ATTACHEMENTS, SEE ELEVATIONS FOR PANEL LAYOUT
 7. GYPSUM BOARD - (1) LAYER 5/8" GYP. BD., PAPER SURFACED, APPLIED PERPENDICULAR TO FRAMING WITH 1" TYPE S STEEL SCREWS SPACED 8" O.C. SEE NOTES FOR GYP. BD. TYPE
 8. BED OF SEALANT - MTL TRACKS IN CONTACT WITH CONCRETE TO BE SET IN A FULL BED OF SEALANT. SEAL OTHER TRACKS TO DECK.
 - 9.
 - 10.

SEE EXT. DETAILS FOR THRU FLASHING, ACCESSORIES, AND DETAILS

HIGHEST GRADE OF ENTIRE LENGTH OF WALL (SEE ELEV.)

1 WALL 01 - EXT. WALL - NICHIIHA - GARAGE LEVELS
1 1/2" = 1'-0"

DAVID LLOYD
NO. 936
STATE OF MAINE

Prepared For:

NewHeight Group

118 Congress Street, Unit 401
Portland, Maine

Consultant:

ARCHETYPE architects

48 Union Wharf Portland, Maine 04101
(207) 772-6022 ARCHETYPE@ARCHETYPEPA.COM

Architect:

ARCHETYPE architects

48 Union Wharf Portland, Maine 04101
(207) 772-6022 ARCHETYPE@ARCHETYPEPA.COM

Project:

LUMINATO

167 Newbury Street Portland, Maine

Revisions:

Date:

JULY 21, 2016

Scale:

1 1/2" = 1'-0"

WALL TYPES

A4.01