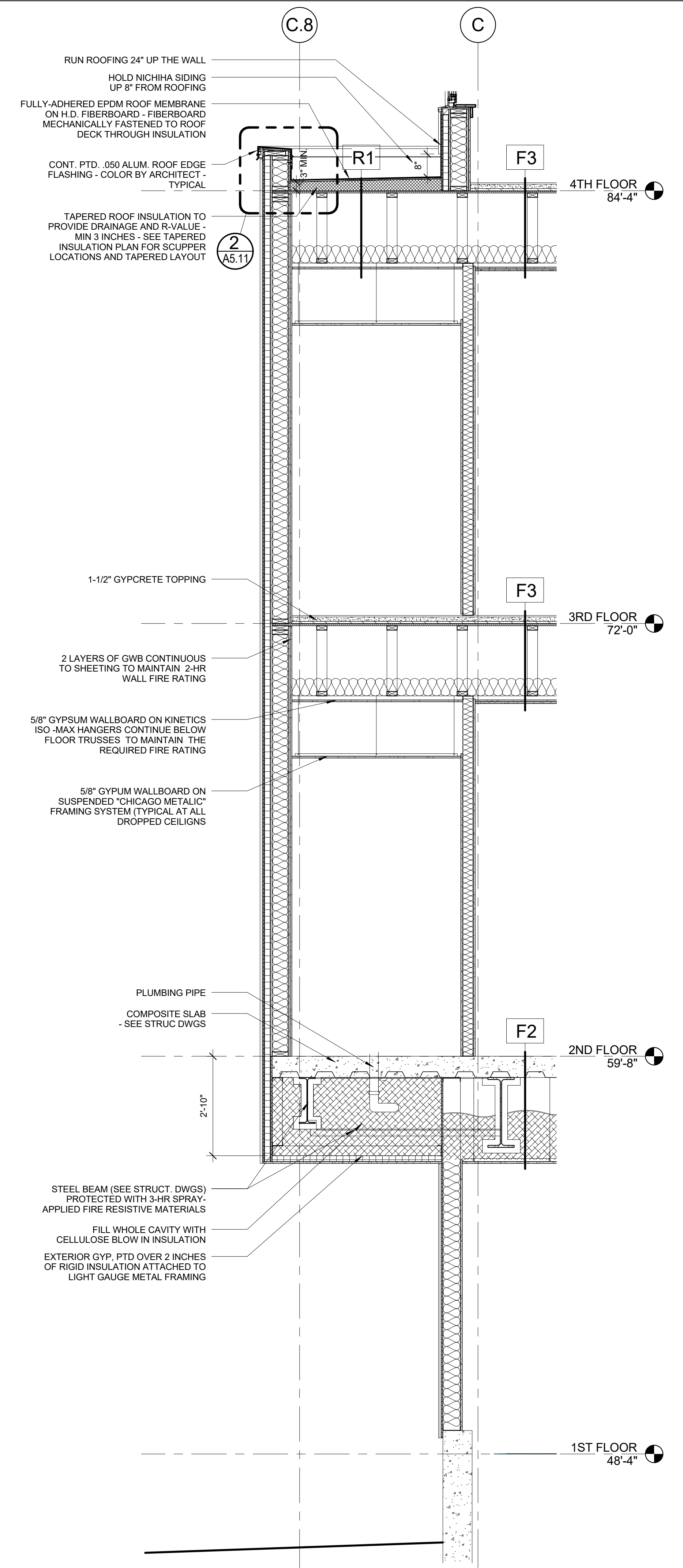
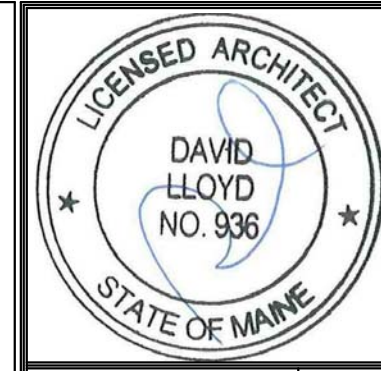


2 | WALL SECTION DETAIL
1/2" = 1'-0"



1 | SECTION AT BUMPOUT
1/2" = 1'-0"



Prepared For:
NewHeight Group
118 Congress Street #401
PORTLAND, ME 04101

Consultant:
ARCHETYPE architects
48 Union Wharf Portland, Maine 04101
(207) 772-6022 ARCHETYPE@ARCHETYPEA.COM

Project:
LUMINATO
167 Newbury Street Portland, Maine

Revisions:
Date: JULY 21, 2016
Scale: 1/2" = 1'-0"

WALL SECTIONS
A3.20