

LUMINATO – PORTLAND, MAINE

SECTION 26 06 50.16

LIGHTING FIXTURE SCHEDULE

PART 1 – GENERAL – Not Used

PART 2 – PRODUCTS:

LIGHTING FIXTURE SCHEDULE

SEE ATTACHED

PART 3 – EXECUTION – Not Used

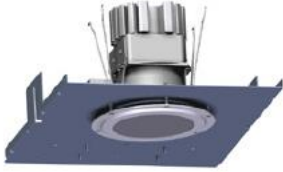
END OF SECTION

Project: **Luminato**
Location: Portland, Maine
Date: June 17, 2016

Bartlett Design
942 Washington Street, Bath, ME
(T) 207-443-5447 (F) 207-443-5560

LIGHTING FIXTURE SCHEDULE

All fixtures are 120 volt, unless specifically noted otherwise.



Dimensions: Reflector Diameter = 4" Trim Diameter = 5.25"
Recess Height = 5.625"

Type: **B1**

Description: Recessed mounted downlight with integral dimming LED driver. Provide wall dimmer compatible with Type T2 light as certified by the luminaire manufacturer.

Lamps: 26.6 watt 3000K LED (supplied with luminaire)

Manufacturer: *Prescolite # LF4LED7G4-120-2DM-4LFLED7G4-30K*



Dimensions: Diameter = 10.875" Height = 3.785"

Type: **C1**

Description: Surface ceiling mounted light with white diffuser and white housing. Provide integral non-dimming LED driver.

Lamps: 15 watt 2700K LED (supplied with luminaire)

Manufacturer: *American Scientific Lighting # HCD/15/27K/DV/10.875/ES*



Dimensions: Diameter = 6" Height = 2-1/4"

Type: **C2**

Description: Low profile surface ceiling light with frosted glass lens and die-formed steel housing. Finish: satin nickel. Provide integral non-dimming LED electronic driver.

Lamps: 10 watt 2700K LED (supplied with luminaire)

Manufacturer: *American Scientific Lighting # HRB/10/2700K/D6/DV/FSN/LCU*

Dimensions: Diameter = 14" Height = 4.25"

Type: **C3**

Description: Similar to Type C1 except larger with higher light output and integral dimming LED driver.

Lamps: 22 watt 2700K LED (supplied with luminaire)

Manufacturer: *American Scientific Lighting # HCD/22/27K/DVD/14/ES*



Dimensions: Diameter = 7.25" Height = 1.25"

Type: C4

Description: Surface ceiling mounted luminaire with diffuse impact-resistant lens and white trim. Luminaire shall include an integral LED driver.

Lamps: 16.4 watt 3500K LED (supplied with luminaire)

Manufacturer: *Prescolite # LBSLEDA10L-35K-8-WH*



Dimensions: Diameter = 12.5" Height = 2.75"

Type: C5

Description: Surface ceiling mounted luminaire with white acrylic lens and brushed nickel trim finish. Luminaire shall include an integral non-dimming LED driver.

Lamps: 19.5 watt 3000K LED (supplied with luminaire)

Manufacturer: *American Scientific Lighting # MAG-19.5-DV-3000K-FBN*



Dimensions: Diameter = 23.3" Height = 4"

Type: C6

Description: Surface ceiling mounted white painted aluminum ring luminaire with direct/indirect distribution. Luminaire shall include a recessed non-dimming LED driver.

Lamps: 48 watt 3000K LED (supplied with luminaire)

Manufacturer: *Eureka Lighting # 3800-24-LED.48.30-120V-RDP-WHM-WHM-3981C*



Dimensions: Length = 48" Height = 4.5" Width = 3.9375"

Type: J1

Description: LED strip light with white housing and acrylic diffuser. Provide integral step-dim LED driver to provide 50% light output until occupancy is detected by remote motion sensor, whereupon the luminaire shall automatically increase to full light output.

Lamps: 48 watt 3500K LED (by manufacturer)

Manufacturers: *Columbia Lighting # LCL4-35-MW-ESD-U*

Dimensions: Length = 48" Height = 4.5" Width = 3.9375"

Type: J1A

Description: Similar to type J1 except without an integral motion sensor and with an on/off LED driver to operate continuously at full output as a garage night light.

Lamps: 48 watt 3500K LED (by manufacturer)

Manufacturers: *Columbia Lighting # LCL4-35-MW-E-U*

Dimensions: Length = 48" Height = 4.5" Width = 3.9375"

Type: **J1B**

Description: Similar to type J1 except with higher light output and without an integral motion sensor and with an on/off LED driver to operate continuously at full output as a garage night light.

Lamps: 96 watt 3500K LED (by manufacturer)

Manufacturers: *Columbia Lighting* # LCL4-35-VL-E-U

Dimensions: Length = 48" Height = 4.5" Width = 3.9375"

Type: **J1C**

Description: Similar to type J1 except with higher light output.

Lamps: 96 watt 3500K LED (by manufacturer)

Manufacturers: *Columbia Lighting* # LCL4-35-VL-ESD-U

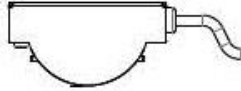
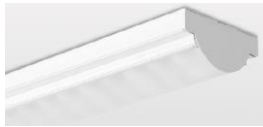
Dimensions: Length = 48" Height = 4.5" Width = 3.9375"

Type: **J1D**

Description: Similar to type J1 except with lesser light output.

Lamps: 25 watt 3500K LED (by manufacturer)

Manufacturers: *Columbia Lighting* # LCL4-35-LW-ESD-U



Dimensions: Length = 24'-0" Height = 1.5" Width = 2.875"

Type: **J2**

Description: Surface ceiling LED strip light including a frosted acrylic lens, and shall provide 1054 lumens per foot output. The overall length of 24'-0" shall be made up of two separate lights that are 144 inches in length each. Each of the two lights shall include a remote LED driver to be installed above the ceiling adjacent to the strip light. Both lights shall be installed end-to-end in a continuous length and shall be controlled by a single wall dimmer. Install the assembly on the bottom surface of the dropped beam enclosure. Provide an electrical feed from the top surface of the lights.

Lamps: 216 watt (total for two lights) 3000K LED (by manufacturer)

Manufacturers: *Birchwood Lighting* # WP-LED-LP-HLO-30-CR(12'-0")-HRW-120-D10 (2 required)

Dimensions: Length = 20'-0" Height = 1.5" Width = 2.875"

Type: **J2A**

Description: Similar to Type J2 except with two lights at 10'0" in length each.

Lamps: 180 watt (total for two lights) 3000K LED (by manufacturer)

Manufacturers: *Birchwood Lighting* # WP-LED-LP-HLO-30-CR(10'-0")-HRW-120-D10 (2 required)



Dimensions: Width = 7.5" Height = 10.875" Projection = 3.75"

Type: **L1**

Description: Surface wall mounted luminaire with polycarbonate diffuser. Mount in elevator pit 24" above pit floor. Provide integral electronic non-dimming LED driver. Install a SPST switch in the pit to operate the pit light accessible from the lower landing opening and clear the elevator car.

Lamps: 4000K LED (supplied with luminaire)

Manufacturers: *American Scientific Lighting # CRA-16-DV-4000K-BLK*



Dimensions: Height = 6.875" Width = 6.875" Projection = 3.75"

Type: **S1**

Description: Surface wall LED die-cast aluminum light with black housing. Provide integral LED driver. Luminaire shall be UL listed for wet locations. Coordinate exact location with Architect prior to rough-in.

Lamps: 6.6 watt 3000K LED (by manufacturer)

Manufacturers: *Bega Lighting # 2261LED-BLK*



Dimensions: Diameter = 4.75" Recess Height = 7.125"

Type: **S2**

Description: Recessed downlight with aluminum trim with black finish. Provide integral LED non-dimming driver.

Lamps: 6.5 watt 3000K LED (by manufacturer)

Manufacturers: *Bega Lighting # 6604LED-BLK*



Dimensions: Height = 19.625" Projection = 6.375"

Type: S3

Description: Surface die-cast aluminum LED wall light with black housing and tempered glass top and bottom lenses. Provide integral LED driver. Luminaire shall be UL listed for wet locations. Coordinate exact location with Architect prior to rough-in.

Lamps: 26 watt 3000K LED (by manufacturer)

Manufacturers: *Bega Lighting # 6516LED.537-BLK*



Dimensions: Height = 6.25" Width = 6.25 Projection = 3.75"

Type: S4

Description: Surface die-cast aluminum LED wall light with black housing and matte front face lens. Provide integral LED driver. Luminaire shall be UL listed for wet locations. Coordinate exact location with Architect prior to rough-in.

Lamps: 12.5 watt 3000K LED (by manufacturer)

Manufacturers: *Bega Lighting # 22292LED-BLK*



Luminaire Dimensions: Height = 2.35" Diameter = 2.2"

Track Dimensions: Height = 2.35" Length = 48"

Type: T1

Description: Adjustable LED track assembly with the capability to dim light output and with 48° optical distribution. Provide all components for a complete and functioning system. Provide single circuit surface track in 4-ft track length. Provide compatible wall dimmer as certified by the luminaire manufacturer. Fixture finish shall be white. Track finish shall be white. Provide four track heads per assembly

Lamps: Four 8-watt 3000K LED (supplied with luminaire)

Manufacturer: *Eureka Lighting # 2026-LED.8.30.48-120V-DV-2401C-WH-CHR-WH-BLKA-3983*
(luminaires)

Eureka Lighting # 2730-48-WH (track)



Dimensions: Height = 6.5" Diameter = 2.75"

Type: T2

Description: Adjustable LED track assembly with the capability to dim light output and with 55° optical cut-off distribution. Provide all components for a complete and functioning system. Provide single circuit mounting canopy. Provide wall dimmer compatible with Type B1 light as certified by the luminaire manufacturer. Fixture finish shall be white. Canopy finish shall be white.

Lamps: 22.8-watt 3000K LED (supplied with luminaire)

Manufacturer: *Prescolite # AKTMDLED-15L-30K-8-XFL55-WH* (luminaire)
Prescolite # AKTMP-WH (canopy)



Dimensions: Height = 1" Length = 12" Depth = 3-1/4"

Type: U1

Description: Low profile under-cabinet luminaire with extruded aluminum housing and tempered glass lens with micro-prismatic texture. Provide direct wire connection with single control switch. Provide continuous lengths as indicated on drawing. Provide integral electronic LED driver. Luminaire finish shall be white.

Lamps: 7 watt 3000K LED (supplied with luminaire)

Manufacturers: *Lumax Lighting # UCLED12-7-250-W*

Dimensions: Height = 1" Length = 18" Depth = 3-1/4"

Type: U2

Description: Similar to Type U1 except for length and light output.

Lamps: 10 watt 3000K LED (supplied with luminaire)

Manufacturers: *Lumax Lighting # UCLED18-10-470-W*

Dimensions: Height = 1" Length = 24" Depth = 3-1/4"

Type: U3

Description: Similar to Type U1 except for length and light output.

Lamps: 14 watt 3000K LED (supplied with luminaire)

Manufacturers: *Lumax Lighting # UCLED24-14-640-W*



Dimensions: Length = 48" Height = 6" Projection = 4"

Type: W1

Description: Surface wall mounted luminaire with frosted acrylic diffuser and polished aluminum housing. Luminaire shall be equipped with an integral motion sensor. Provide an integral step-dimming LED driver to operate the luminaire at 50% until motion is detected, whereupon the output shall automatically increase to 100%. Install luminaire on wall 7'-0" AFF.

Lamps: 22.3 watt 3000K LED (supplied with luminaire)

Manufacturers: *American Scientific Lighting # CKS-22.3LED-3000K-DVD-FPA-SWA-OC*



Dimensions: Height = 8-1/2" Width = 4-1/2" Depth = 3"

Type: W2

Description: Surface wall mounted luminaire with gloss white smooth acrylic diffuser and satin nickel steel housing/trim. Provide integral non-dimming LED driver. Install luminaire on wall at 5'-6" AFF.

Lamps: 8.5 watt 2700K LED (supplied with luminaire)

Manufacturers: *American Scientific Lighting # OGN/LED/8.8/27K/DV/FSN*



Dimensions: Length = 27" Height = 4-3/4" Depth = 4"

Type: W3

Description: Surface wall mounted luminaire with white smooth acrylic diffuser and satin nickel steel housing/trim. Provide integral non-dimming LED driver. Install luminaire on wall immediately above vanity mirror.

Lamps: 24 watt 2700K LED (supplied with luminaire)

Manufacturers: *American Scientific Lighting # CCV21-LED-24-27K-DV-FSN-WA-27*



Dimensions: Length = 24-3/4" Height = 8-1/2" Depth = 4"

Type: W4

Description: Surface wall mounted luminaire with smooth frosted white acrylic diffuser and satin chrome aluminum housing. Provide integral occupancy sensor. Provide integral electronic non-dimming LED driver. Install luminaire on wall immediately above closet door frame.

Lamps: 13 watt 2700K LED (supplied with luminaire)

Manufacturers: *American Scientific Lighting # COA/LED/13/2700K/DV/SC/SWA/OC*



Dimensions: Length = 16" Height = 9" Depth = 7-1/2"

Type: W5

Description: Surface wall mounted decorative vanity light with double diffused glass lens shades and brushed nickel housing finish. Provide GU24 spiral LED lamps. UL listed for damp locations Install luminaire on wall immediately above vanity.

Lamps: 18 watt 2700K LED (supplied with luminaire)

Manufacturers: *American Scientific Lighting # TFL/2/GU24/18/2700K/FBN/16/ES*



Dimensions: Length = 7" Height = 9" Depth = 7-1/2"

Type: W6

Description: Surface wall mounted decorative vanity light with single diffused glass lens shades and brushed nickel housing finish. Provide GU24 spiral LED lamps. UL listed for damp locations Install luminaire on wall immediately above vanity.

Lamps: 18 watt 2700K LED (supplied with luminaire)

Manufacturers: *American Scientific Lighting # TFL/1/GU24/18/2700K/FBN/7/ES*



Dimensions: Width = 13-5/8" Height = 9-1/2" Projection = 4-1/4"

Type: X1

Description: Single exit sign with red letters and integral battery supply rated to operate fixture for 90 minutes upon loss of normal power. Mount at height immediately above door frame. Provide directional arrows as indicated on plans.

Lamps: LED - By Manufacturer

Manufacturers: *Dual-Lite # LXURW-E*
