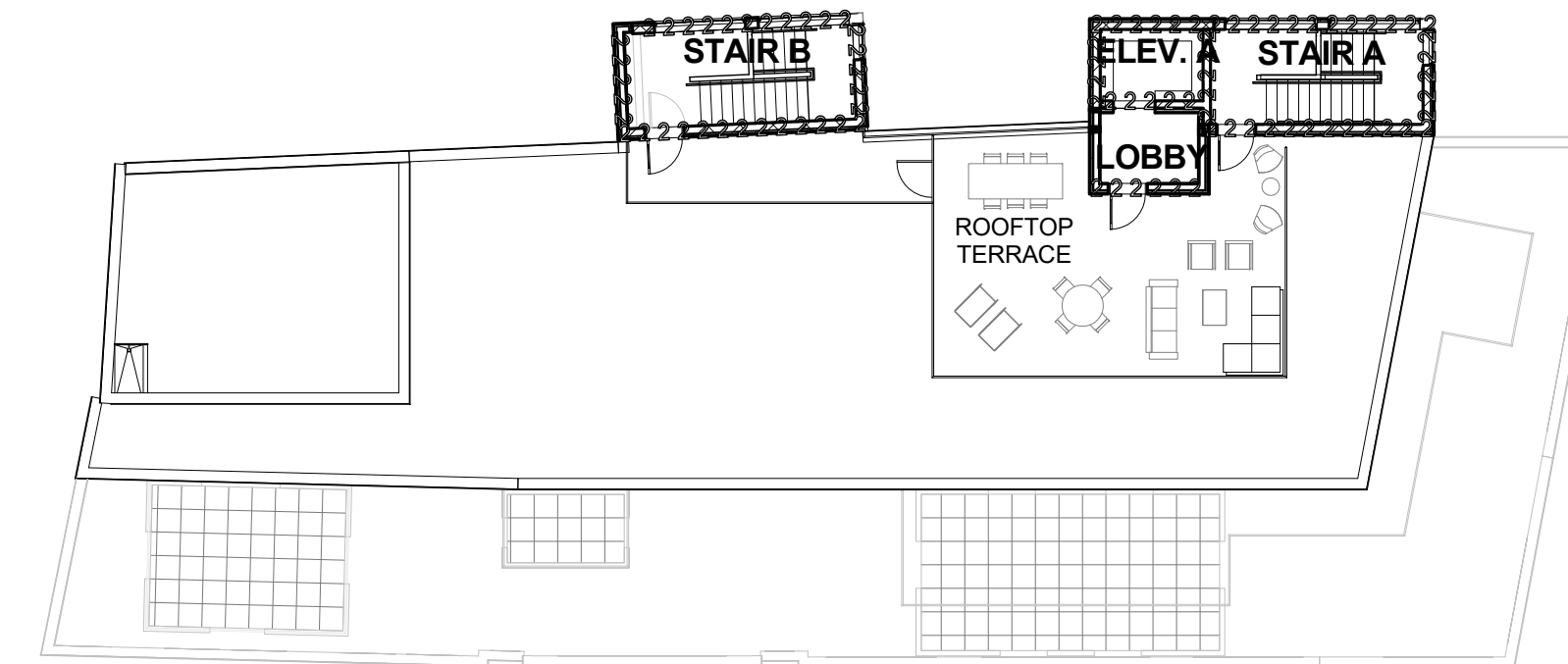


3 | 3RD FLOOR - LIFE SAFETY

1/16" = 1'-0"



8 | ROOF DECK - LIFE SAFETY

1/16" = 1'-0"

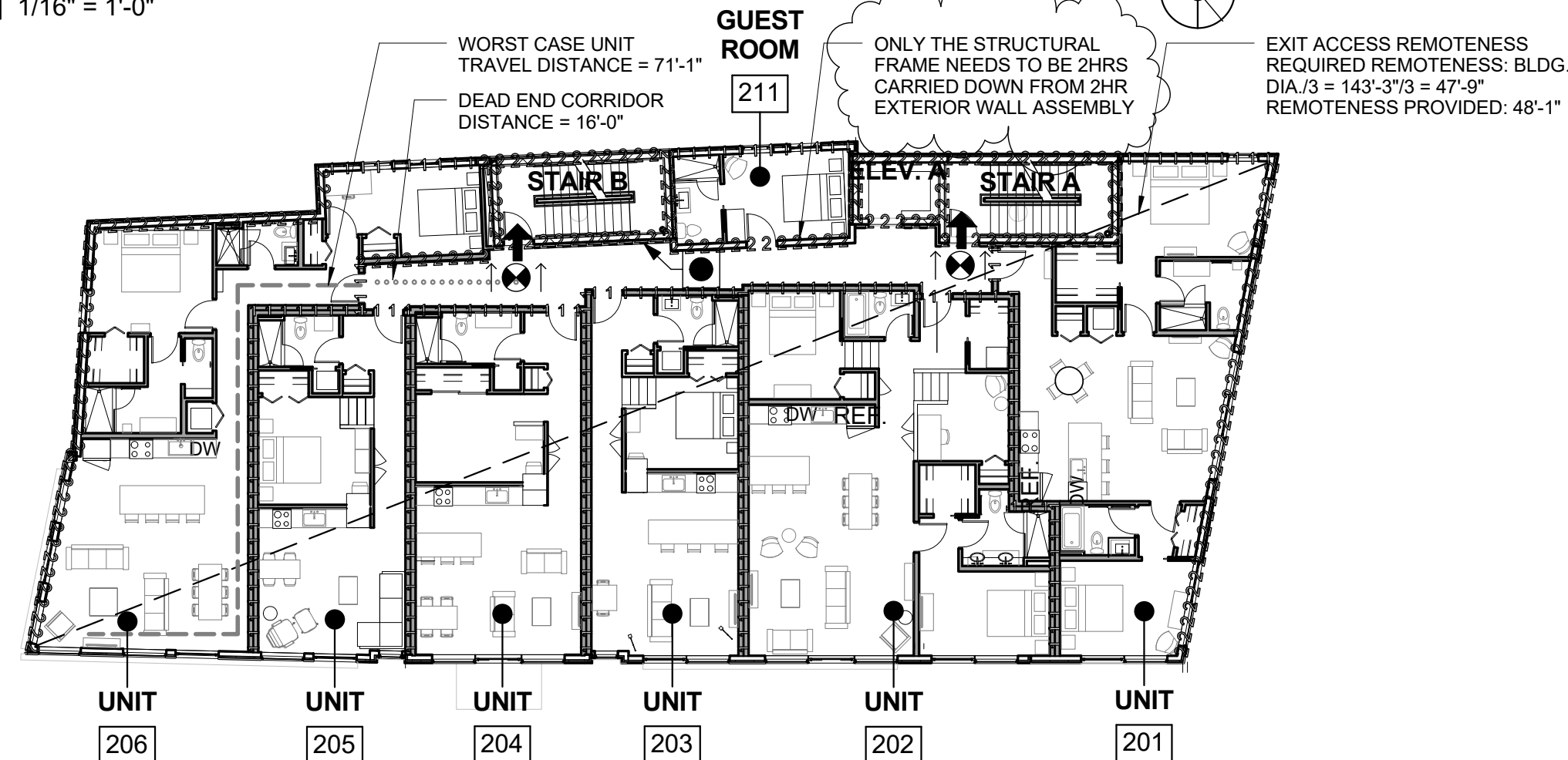
### LIFE SAFETY LEGEND

- EXIT ACCESS REMOTENESS
- 1 HR PARTITION
- 2 HR PARTITION
- 3 HR PARTITION
- EXIT ENTRANCE OR DISCHARGE
- UNIT TRAVEL DISTANCE
- DEAD END CORRIDOR DISTANCE
- TRAVEL DISTANCE FROM MOST REMOTE POINT TO EXIT DISCHARGE = 234'-6"
- EXIT LIGHT, SEE ELEC
- EXIT LIGHT DISPLAY SURFACE
- EXIT LIGHT INDICATOR DIRECTION
- FIRE EXTINGUISHER CABINET

SEE ELECTRICAL DRAWINGS FOR EMERGENCY LIGHTING FIRE ALARM & SMOKE DETECTOR LOCATIONS

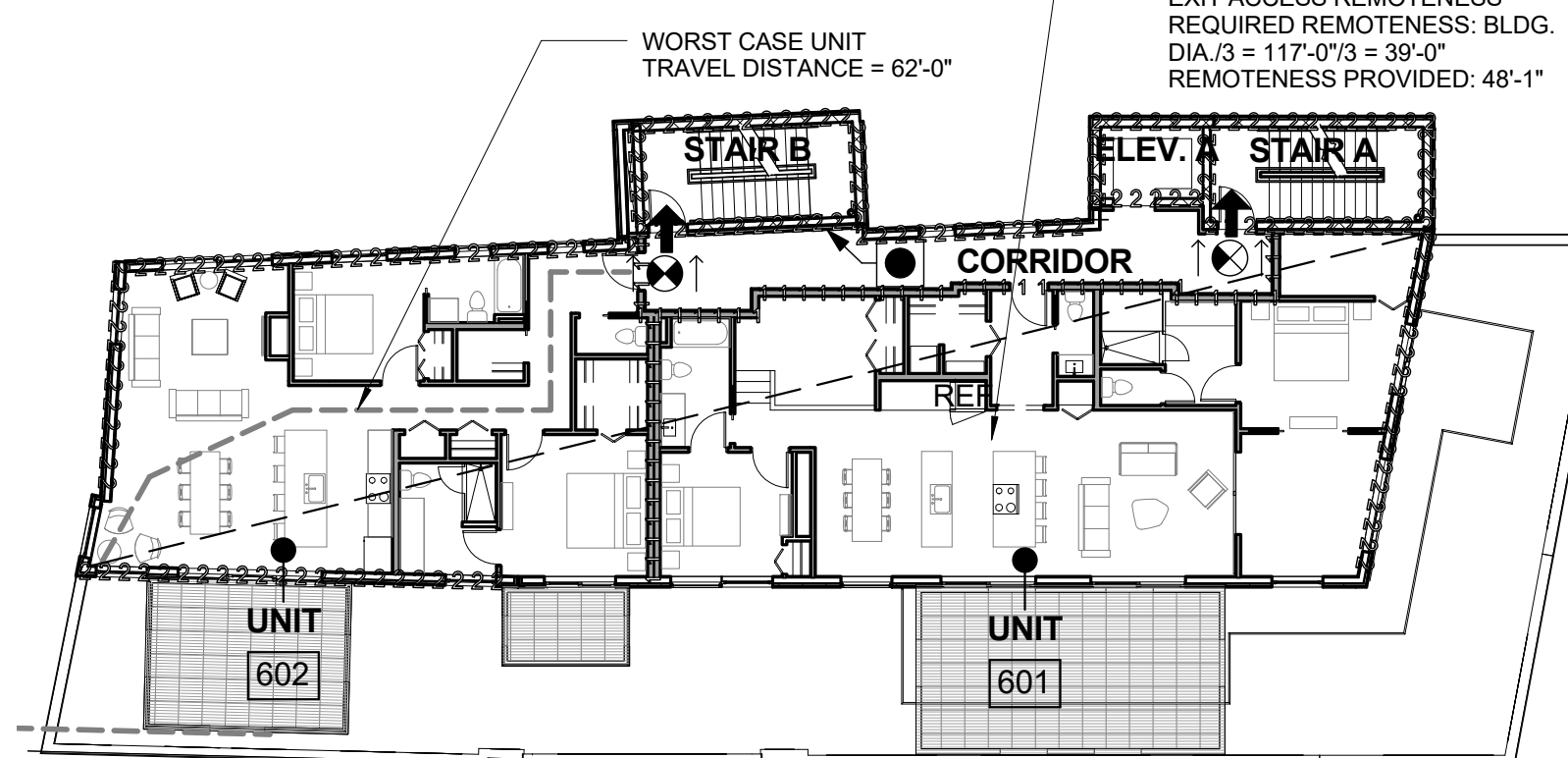
LIFE SAFETY LEGEND

1/8" = 1'-0"



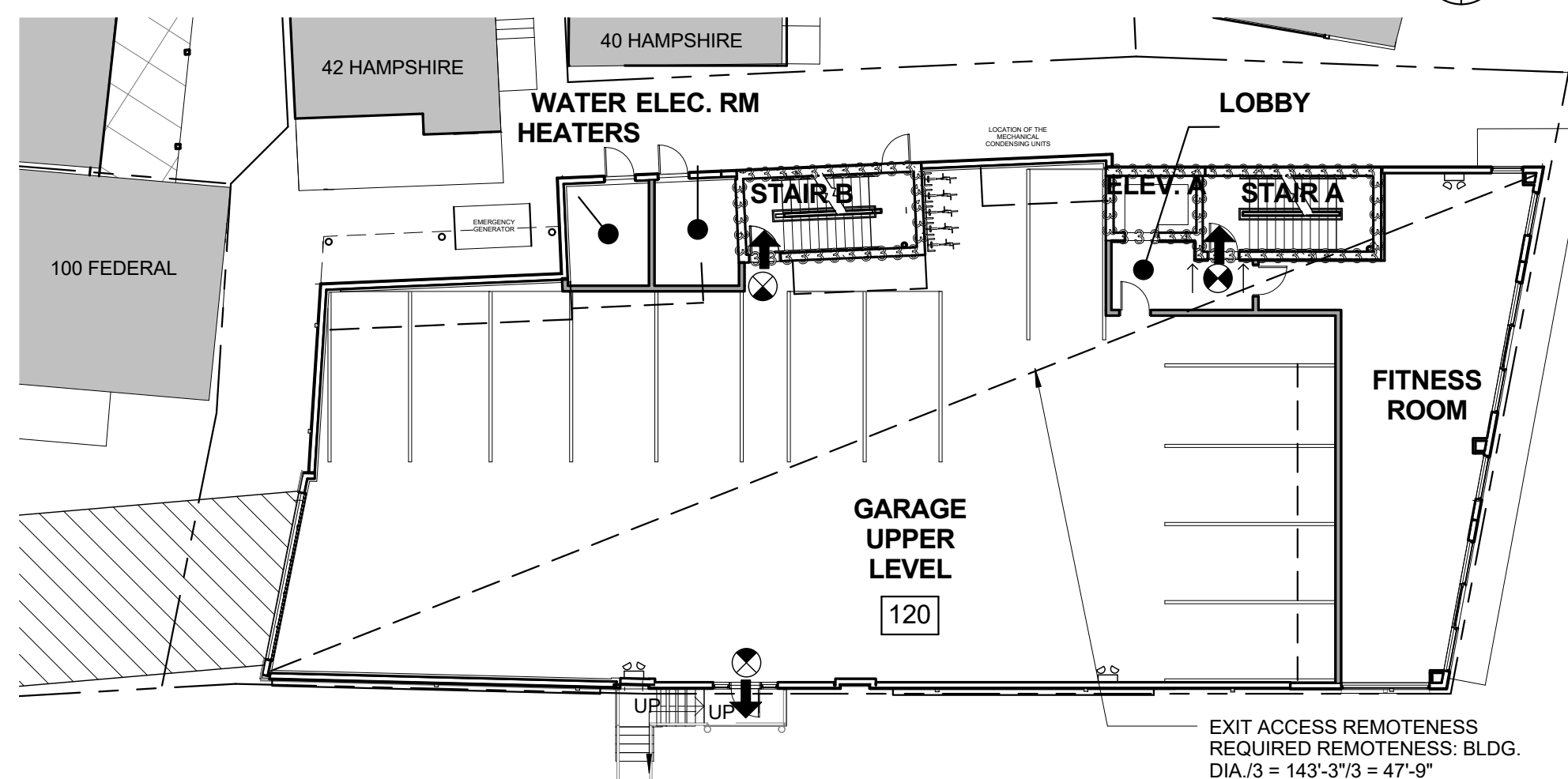
2 | 2ND FLOOR - LIFE SAFETY

1/16" = 1'-0"



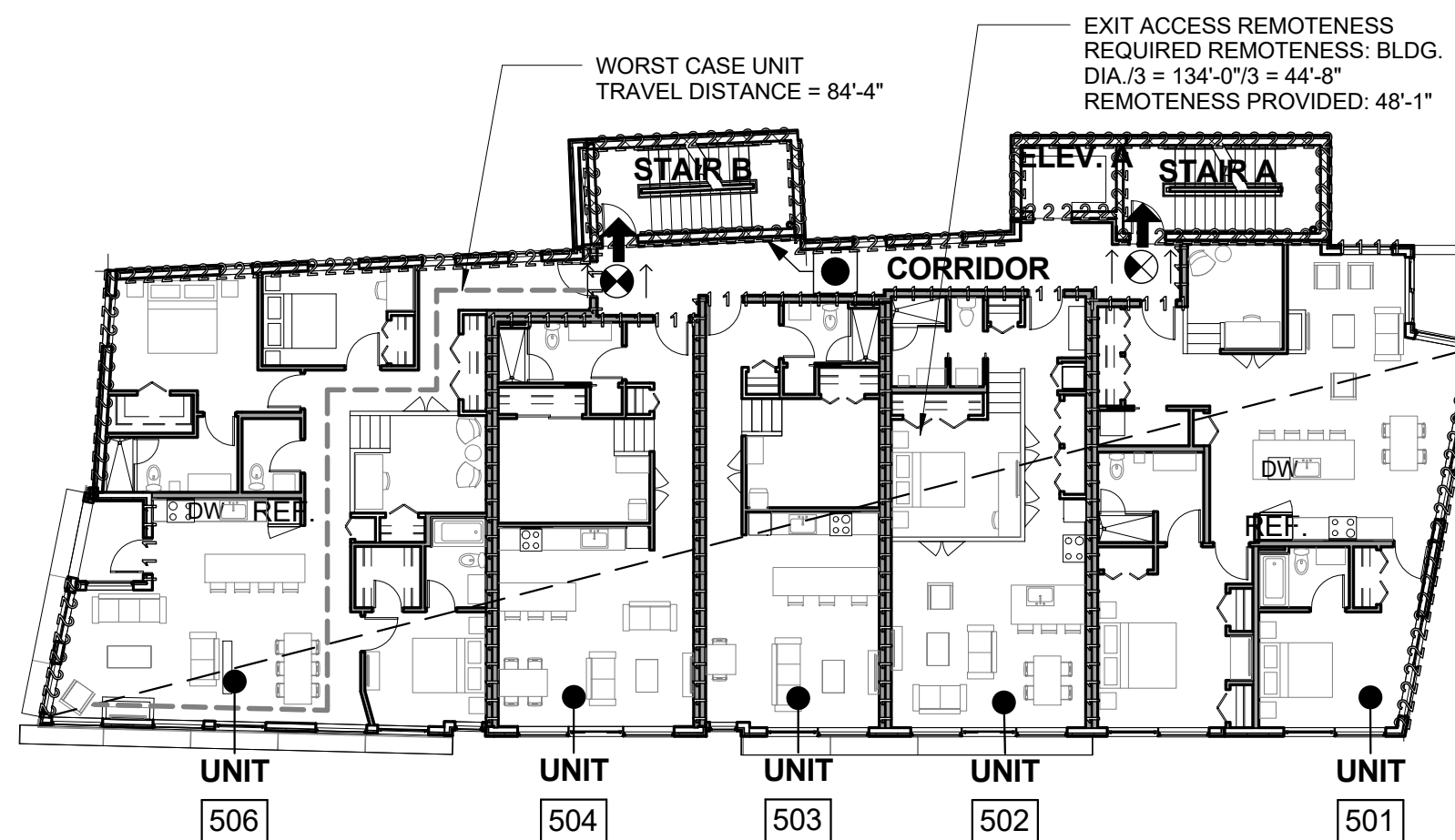
6 | 6TH FLOOR - LIFE SAFETY

1/16" = 1'-0"



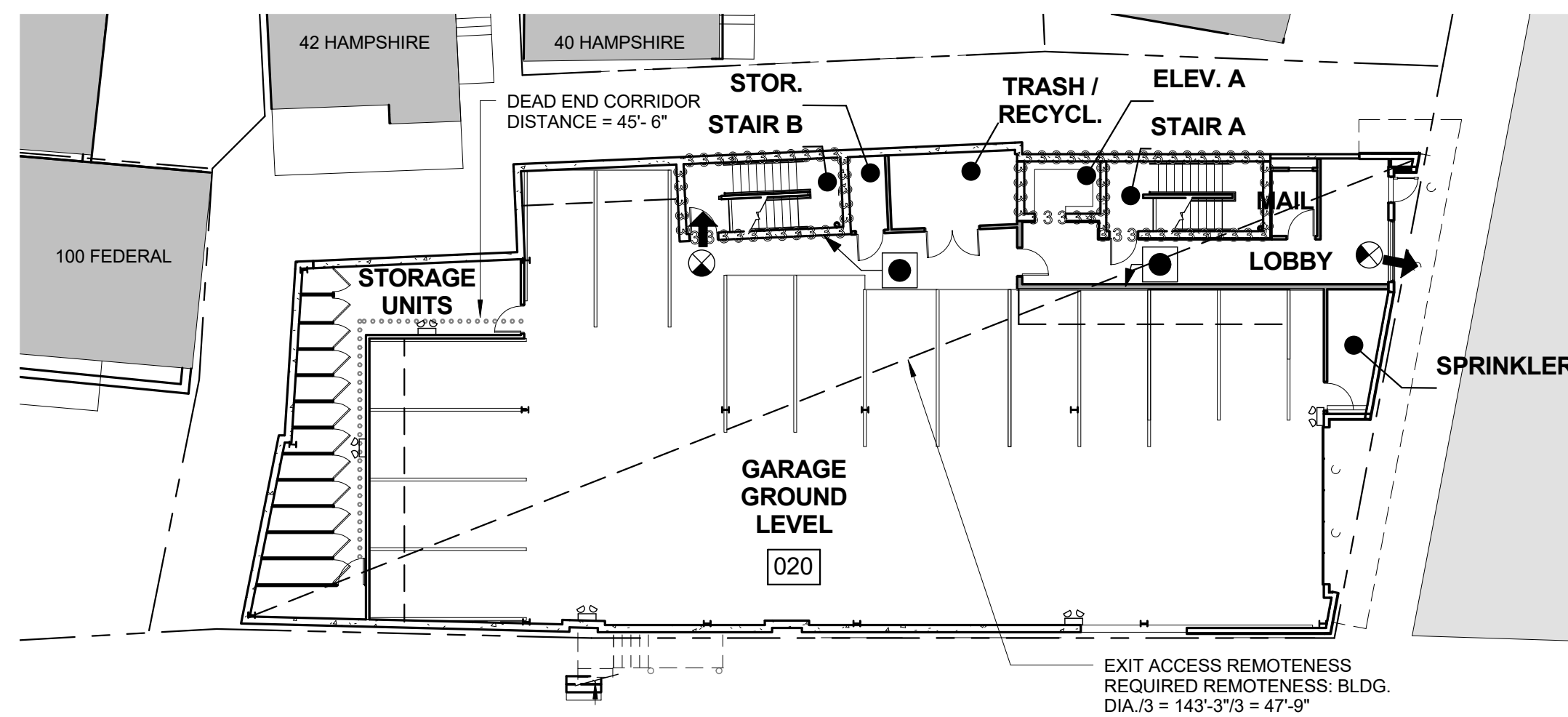
1 | 1ST FLOOR - LIFE SAFETY

1/16" = 1'-0"



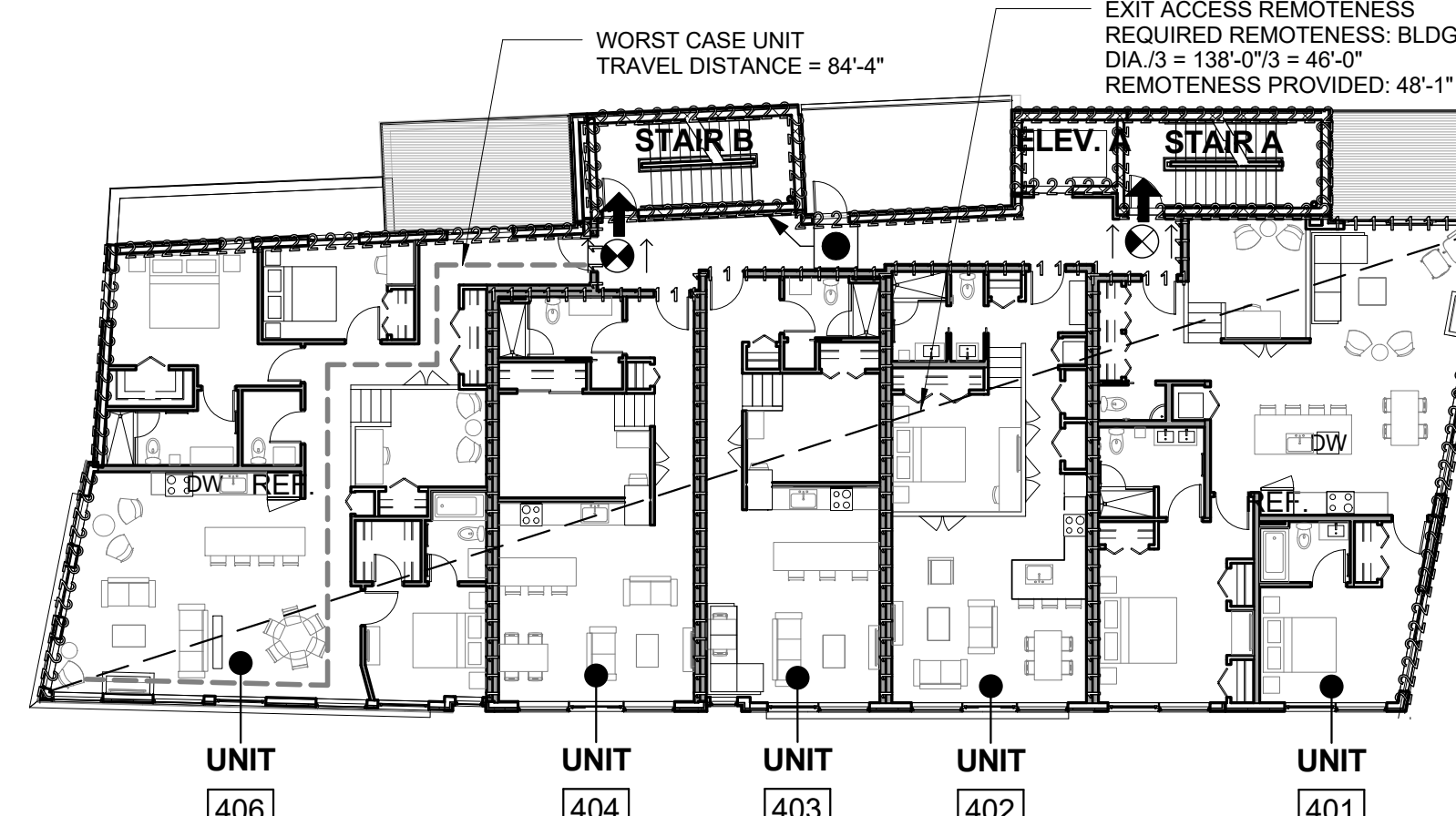
5 | 5TH FLOOR - LIFE SAFETY

1/16" = 1'-0"



0 | BASEMENT - LIFE SAFETY

1/16" = 1'-0"



4 | 4TH FLOOR - LIFE SAFETY

1/16" = 1'-0"

LICENSED ARCHITECT  
DAVID LLOYD  
NO. 936  
STATE OF MAINE

---

Prepared For:  
**NewHeight Group**  
118 Congress Street, Unit 401  
Portland, Maine

---

Consultant:  
**ARCHETYPE architects**  
48 Union Wharf Portland, Maine 04101  
(207) 772-0022 ARCHETYPE@ARCHETYPERS.COM

---

Architect:  
**LUMINATO**  
167 Newbury Street Portland, Maine

---

Revisions:  
1 07-14-16 REVISIONS

---

Date: JULY 14, 2016  
Scale: As indicated  
Project: LIFE SAFETY

---

LS1.1