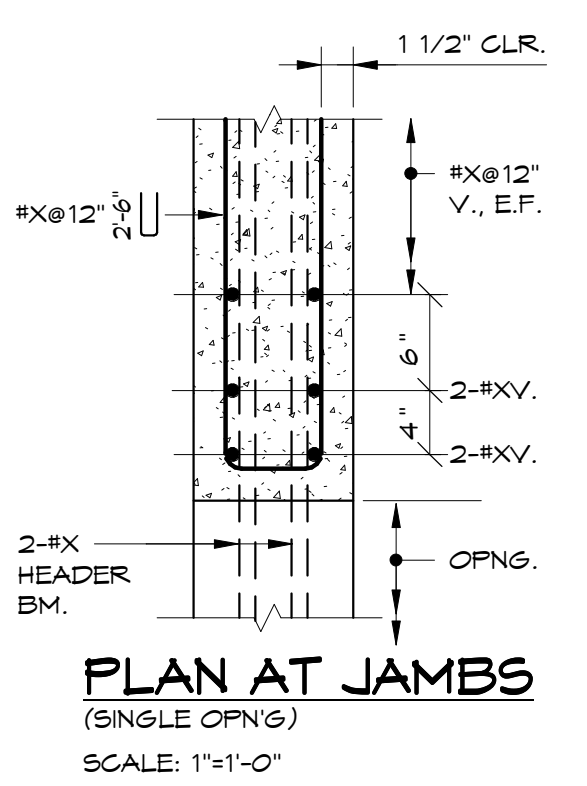
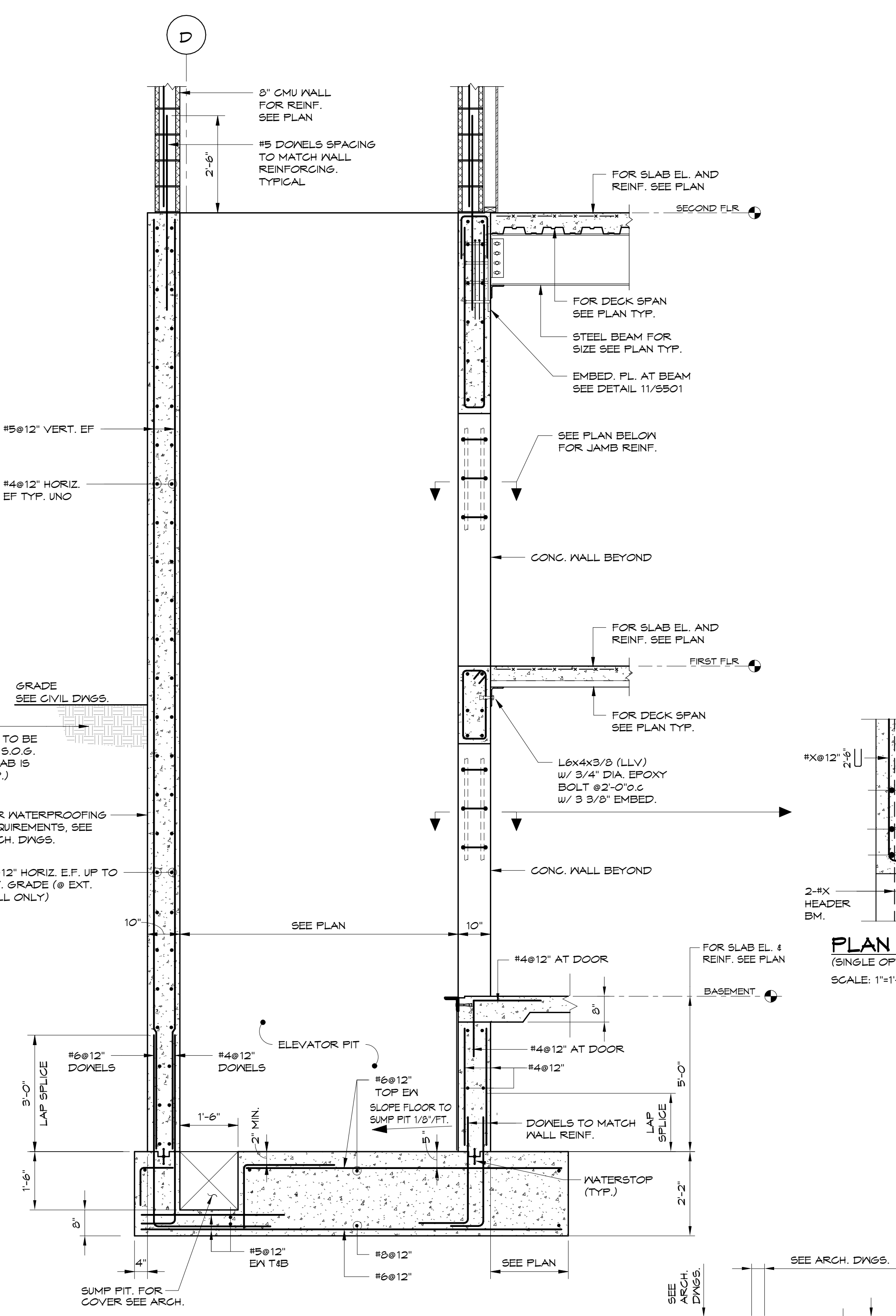
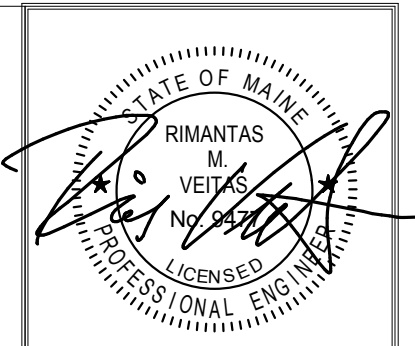
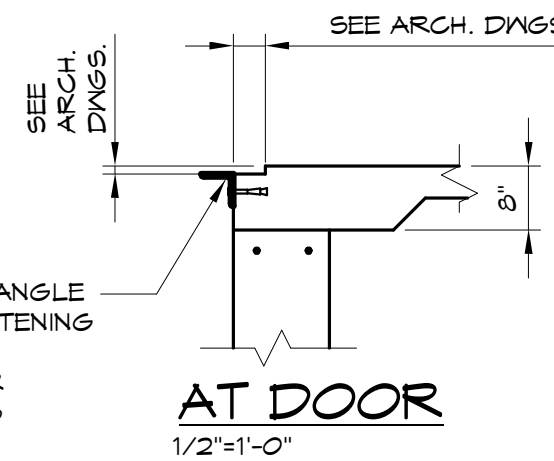


1 SECTION
S403 1/2" = 1'-0"



2 SECTION
S403 1/2" = 1'-0"



Prepared For:
NewHeight Group
118 Congress Street, Unit 401
Portland, Maine

Consulting Engineer:
VEITAS VEITAS
engineers
680 Granite Street, Suite 101
Brunswick, Massachusetts 02914
Tel: (508) 866-7400 Fax: (508) 866-2005

Architect:
ARCHETYPE
architects
48 Union Wharf Portland, Maine 04101
(207) 775-6022 ARCHETYPE@ARCHETYPEPA.COM

Project:
LUMINATO
Newbury Street Portland, Maine

Revisions:
5/16/16 FOUNDATION PERMIT

Date: 04/19/16
Scale: 1/2" = 1'-0"
FOUNDATION DETAILS

S403