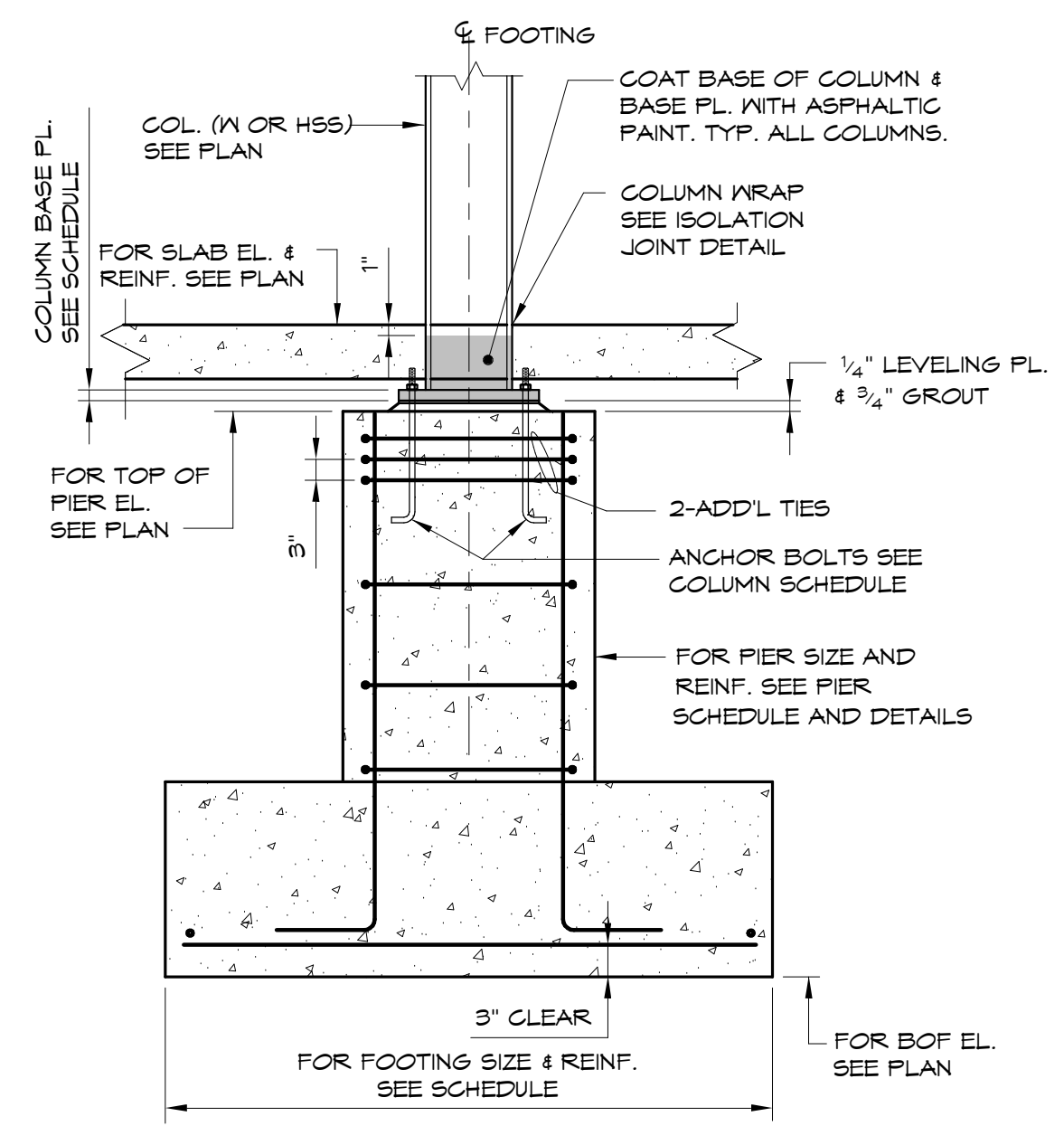


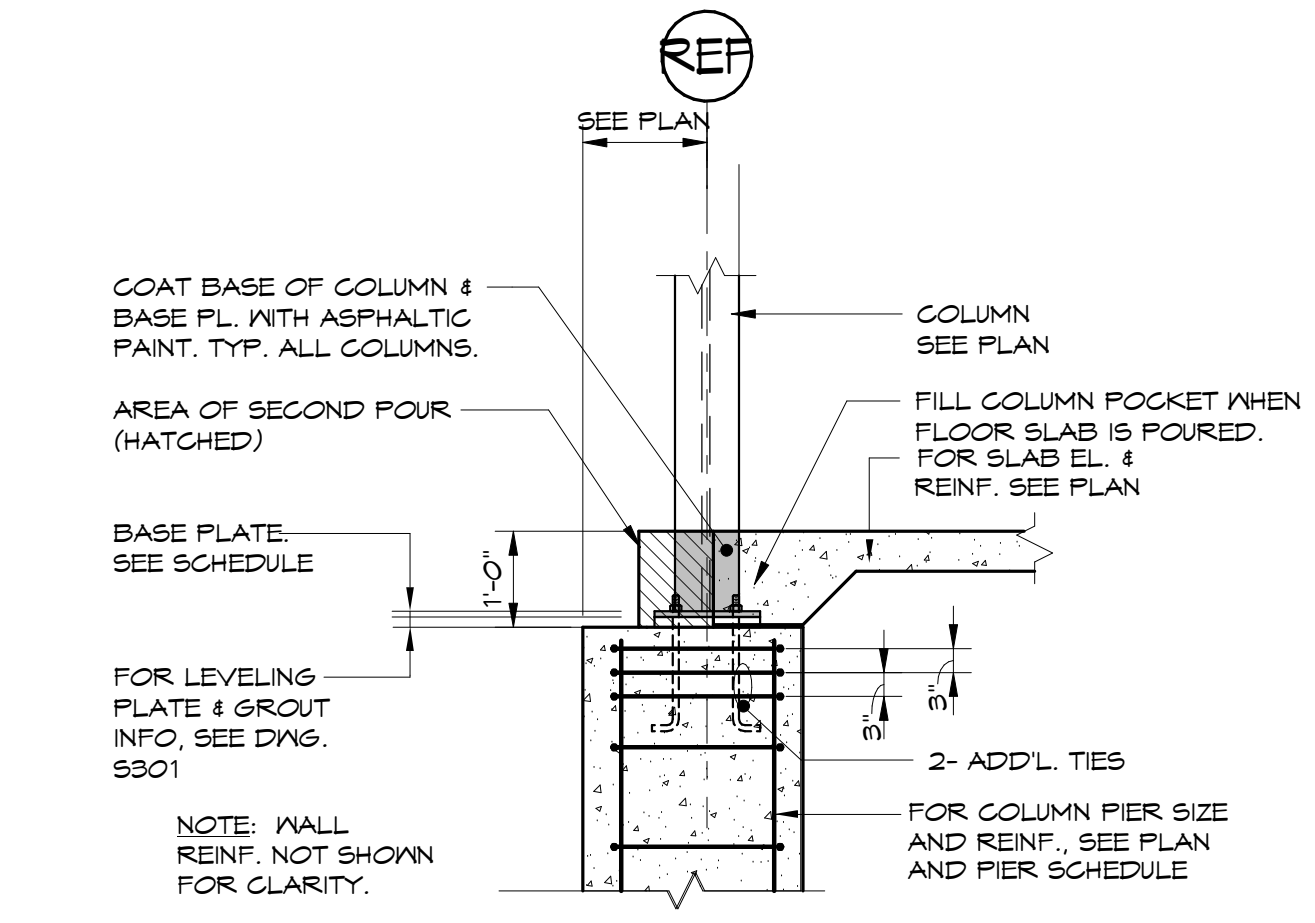
1
8401 1/2" = 1'-0"

INTERIOR COLUMN FOOTING DETAIL



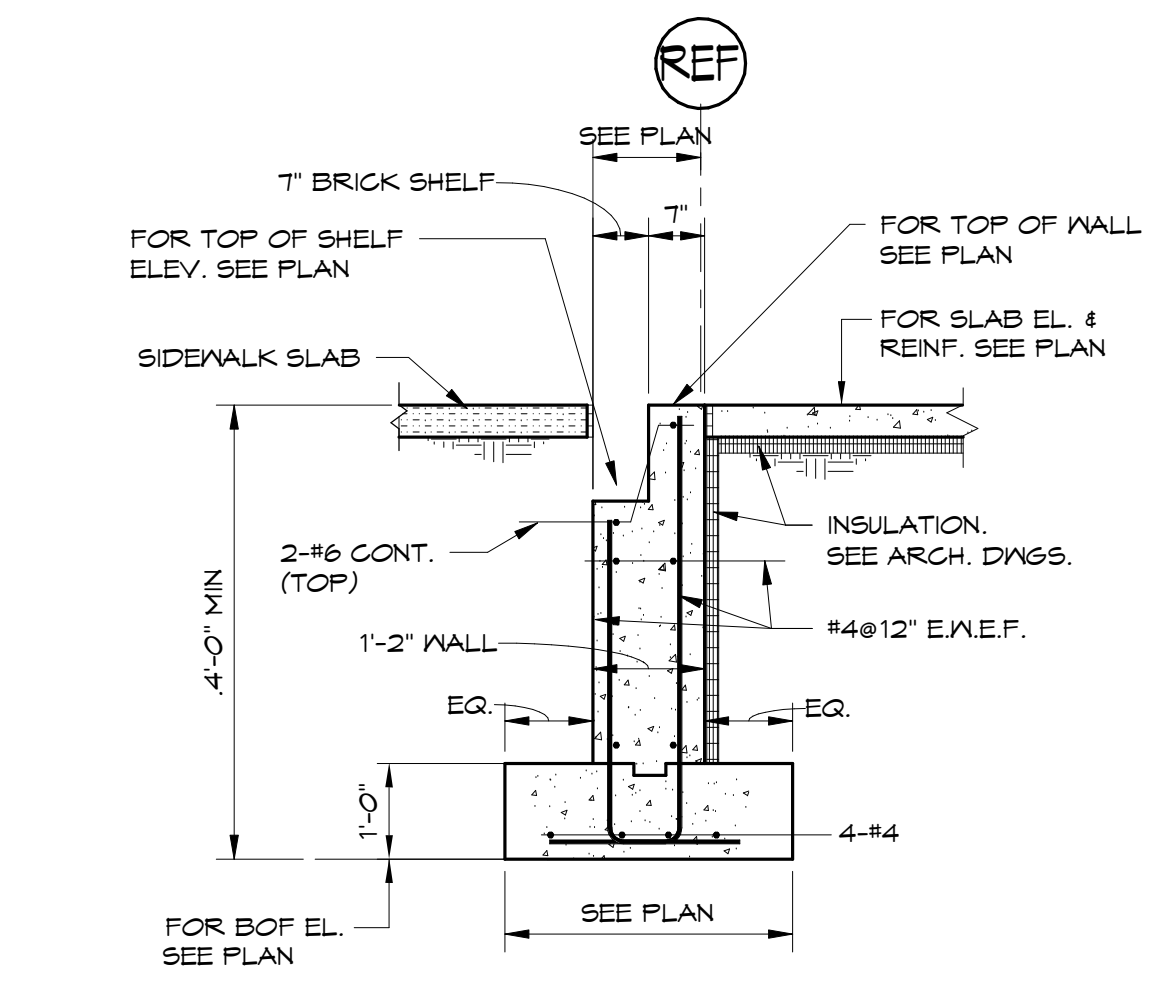
2
8401 3/4" = 1'-0"

INTERIOR FOOTING WITH COLUMN PIER DETAIL

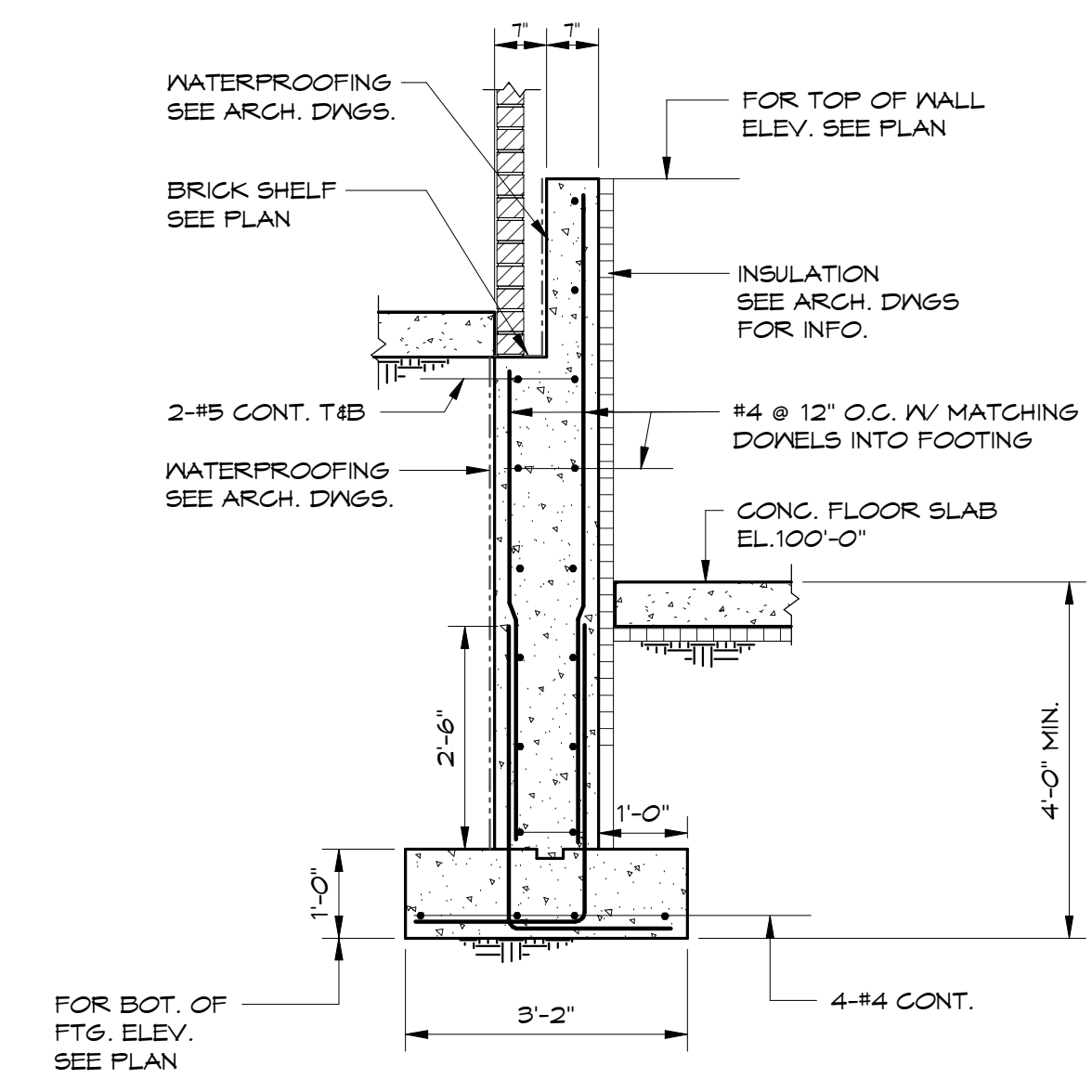


3
8401 1/2" = 1'-0"

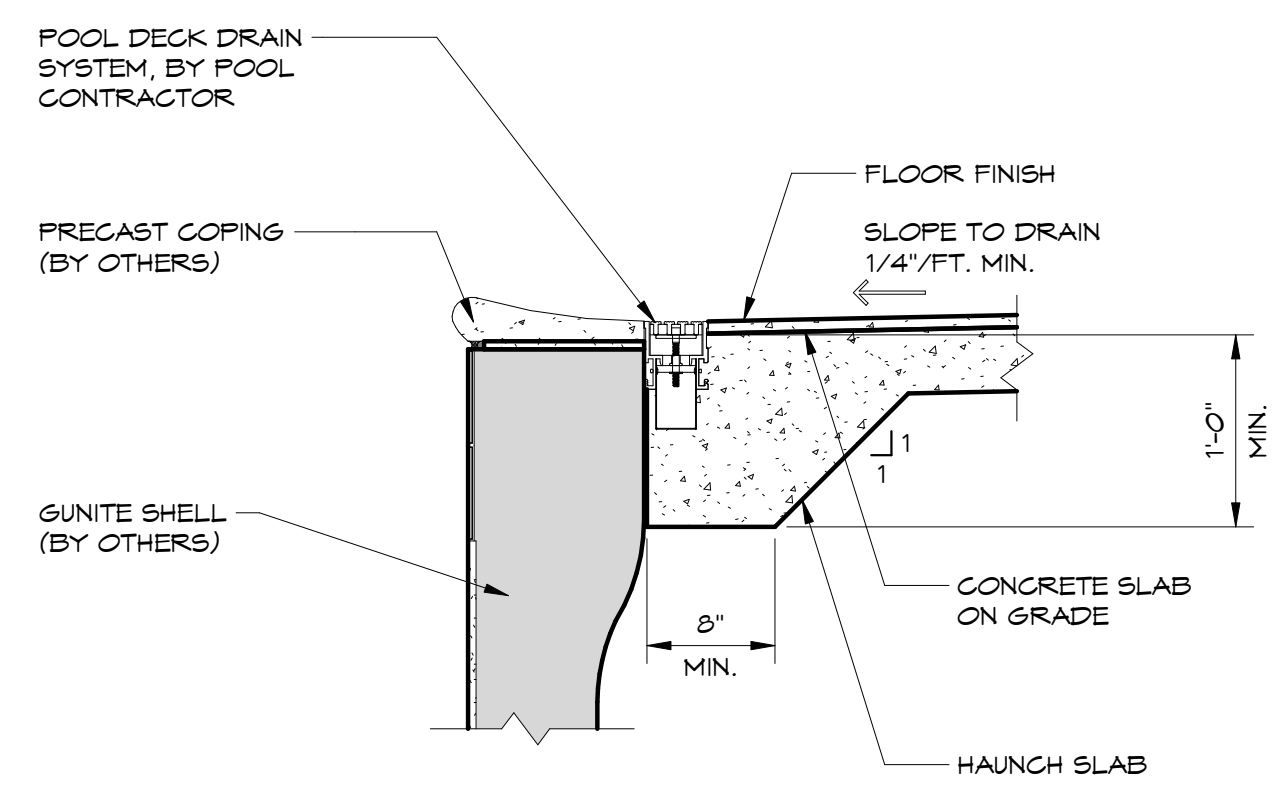
TYP. AT COLUMN POCKETS



4
8401 1/2" = 1'-0"

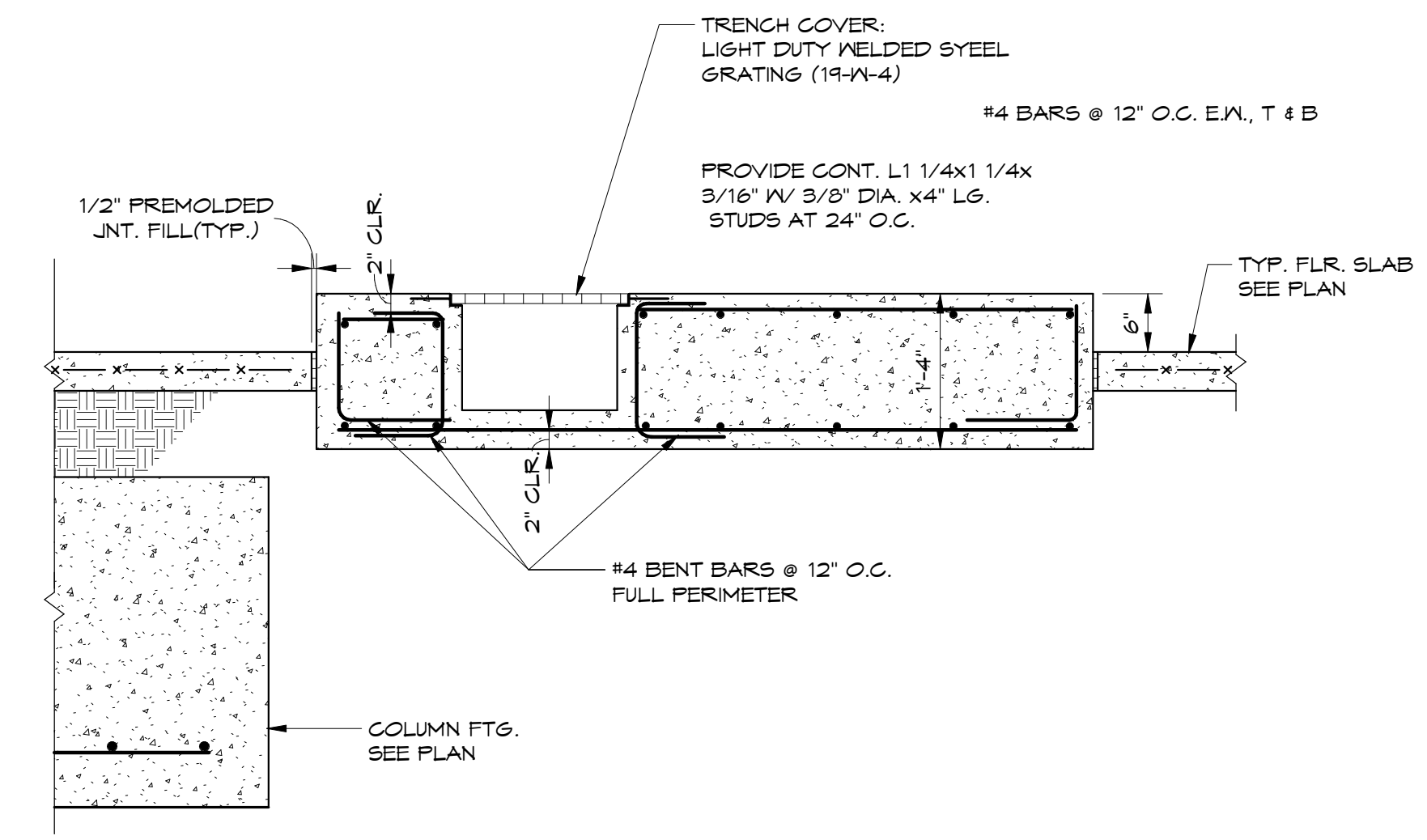


5
8401 1/2" = 1'-0"



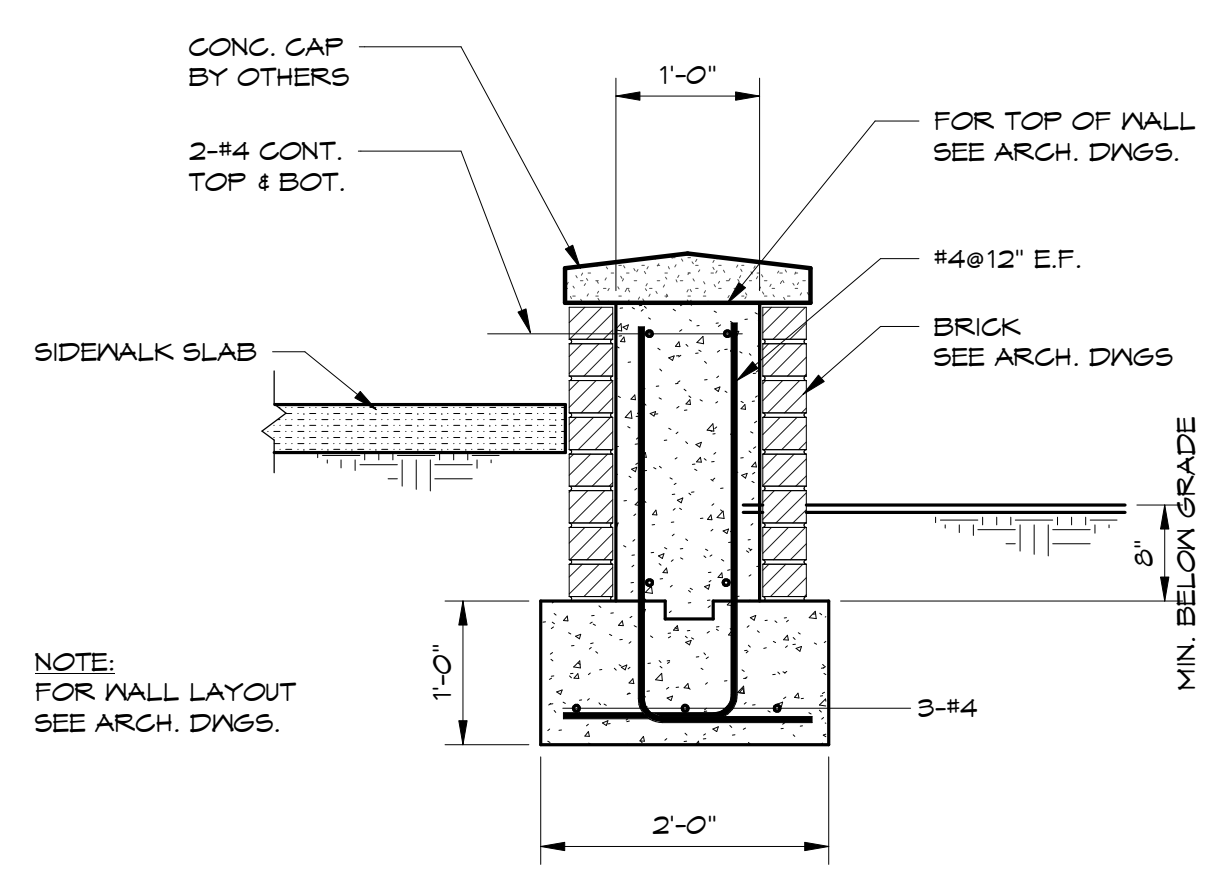
6
8401 1" = 1'-0"

POOL EDGE DETAIL



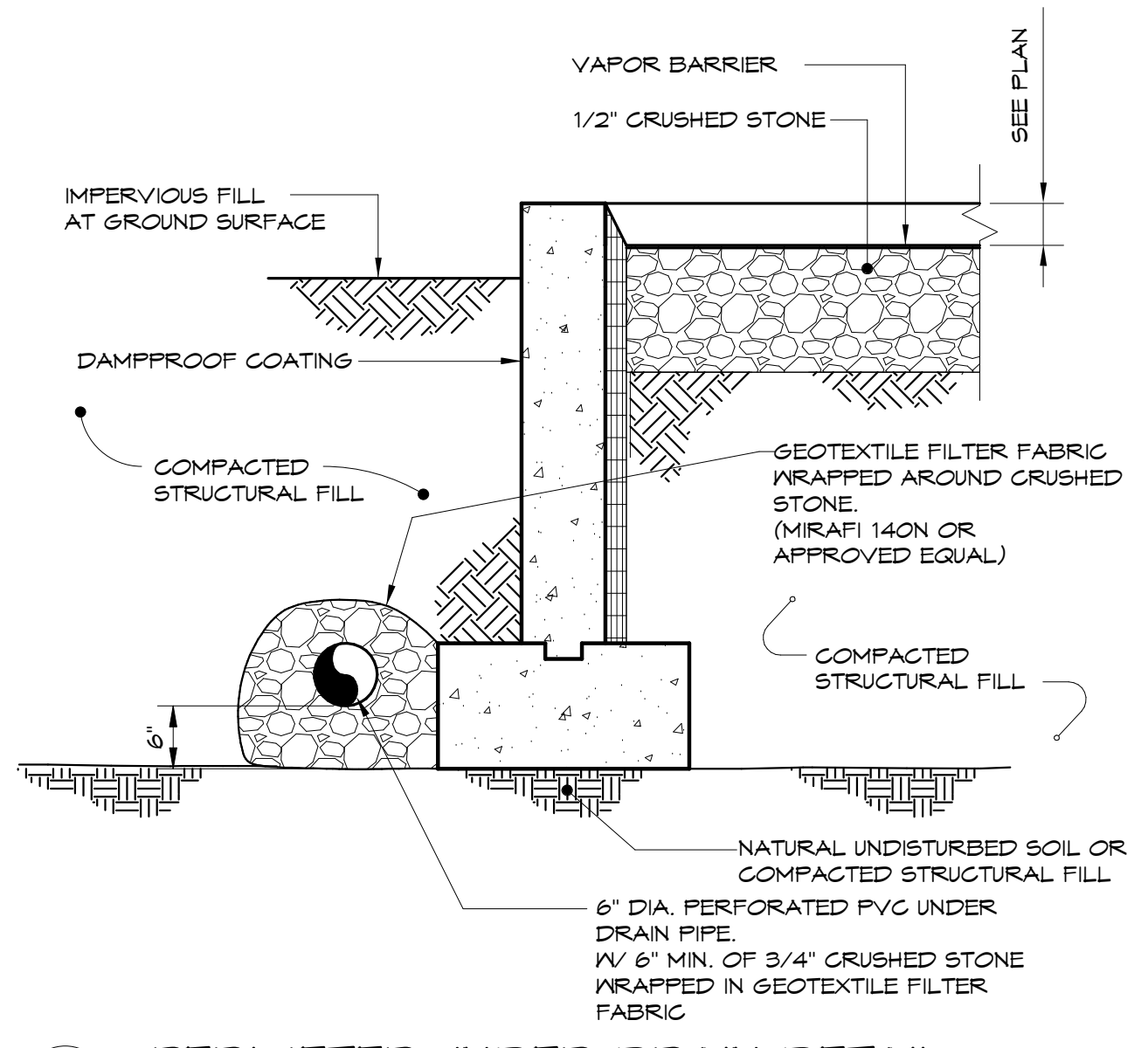
7
8401 3/4" = 1'-0"

SECTION AT TRENCH DRAIN



8
8401 3/4" = 1'-0"

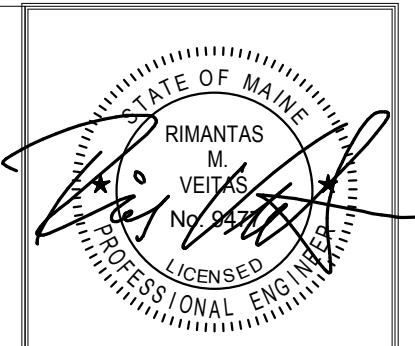
SECTION AT PATIO WALL



9
8401 3/4" = 1'-0"

PERIMETER UNDER DRAIN DETAIL

PROVIDE PERFORATED PVC DRAIN PIPE PER DRAINAGE DRAWINGS. PROVIDE CONNECTION TO A SITE DRAINAGE SYSTEM THAT DAYLIGHTS TO A SLOPE OR CONNECTS INTO A SUITABLE DRAINAGE STRUCTURE HAVING A COVER LOWER THAN THE PROPOSED BUILDING FLOOR SLAB ELEVATION.



Prepared For:
NewHeight Group
118 Congress Street, Unit 401
Portland, Maine

Consulting Engineer:
VEITAS & VEITAS
engineers
68 Granite Street, Suite 101
Business: March 2014
Tel: (707) 680-8800 Fax: (707) 680-2805

Architect:
ARCHETYPE
architects
48 Union Wharf Portland, Maine 04101
(207) 775-6022 ARCHETYPE@ARCHETYPEPA.COM

Project:
LUMINATO
Newbury Street Portland, Maine

Revisions:
5/16/16 FOUNDATION PERMIT

Date: 04/19/16
Scale: As indicated
FOUNDATION SECTIONS & DETAILS

S401