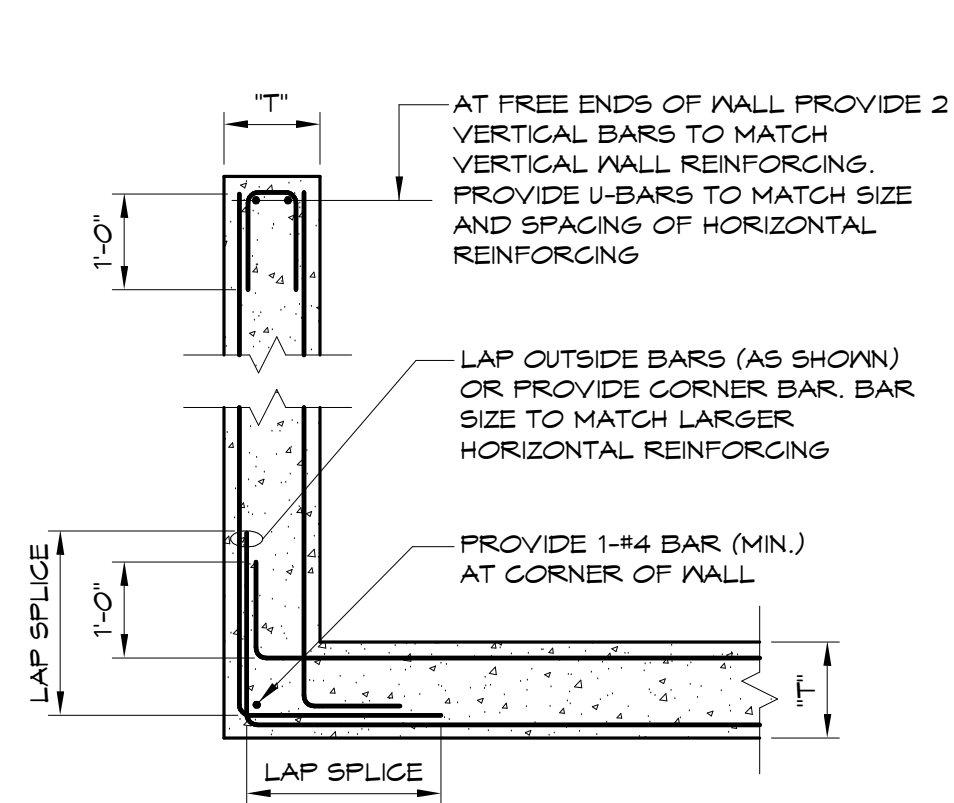
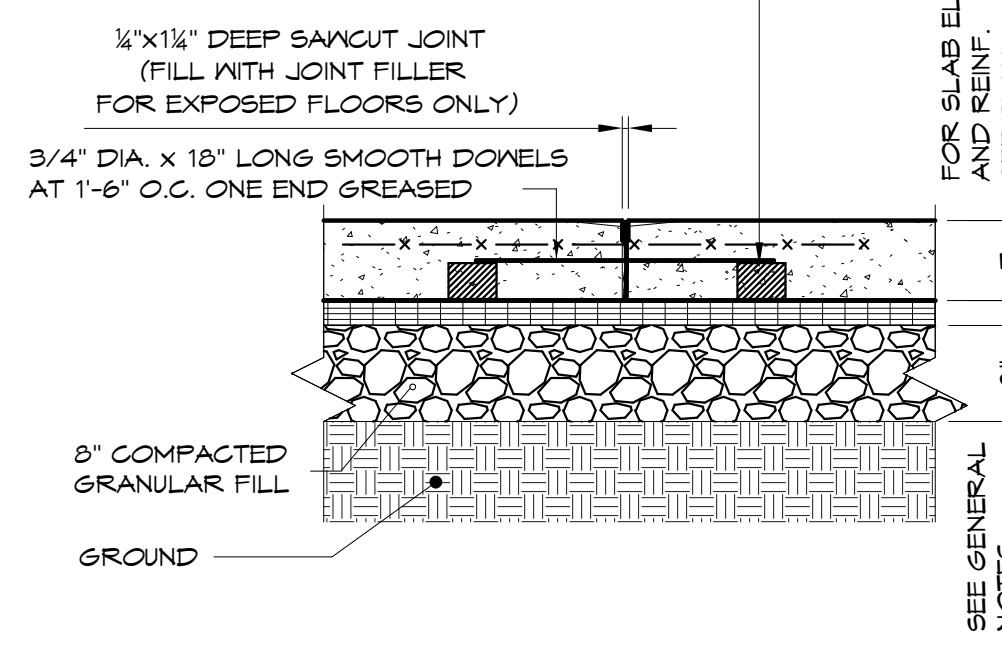


A HORIZONTAL REINFORCING OF CONCRETE WALLS
1/2" = 1'-0"

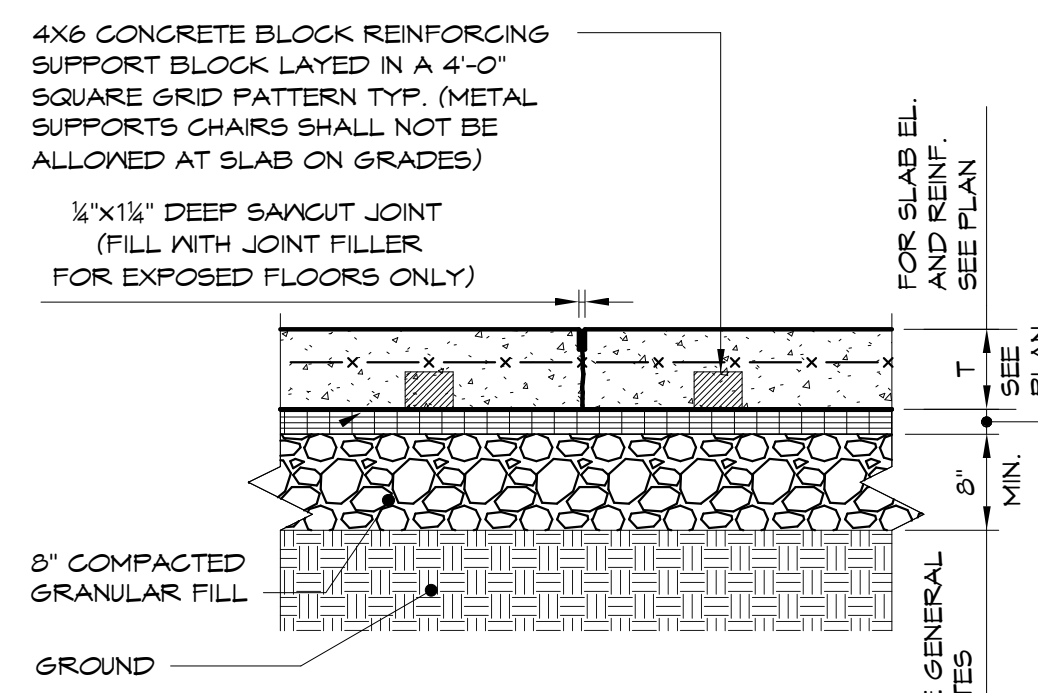


B HORIZONTAL REINFORCING OF CONCRETE WALLS
1/2" = 1'-0"

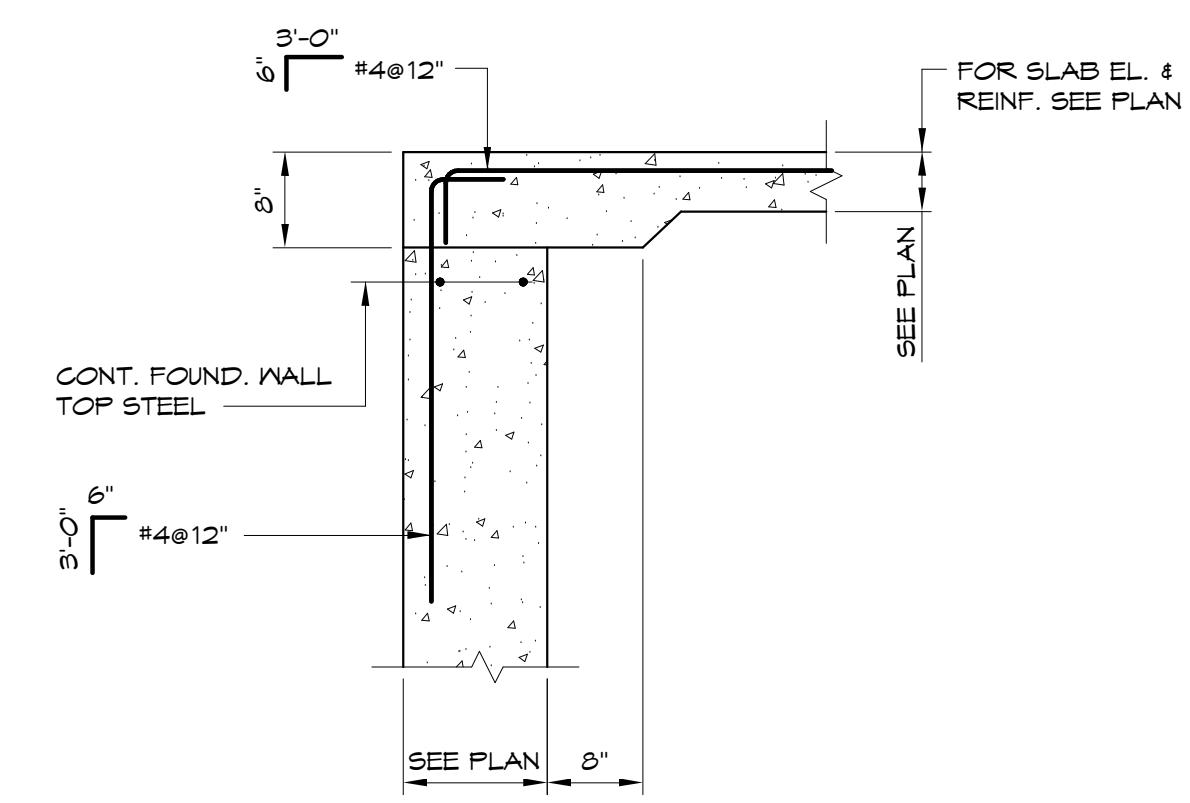
4X6 CONCRETE BLOCK REINFORCING SUPPORT BLOCK LAYED IN A 4'-0" SQUARE GRID PATTERN TYP. (METAL SUPPORTS CHAIRS SHALL NOT BE ALLOWED AT SLAB ON GRADES)



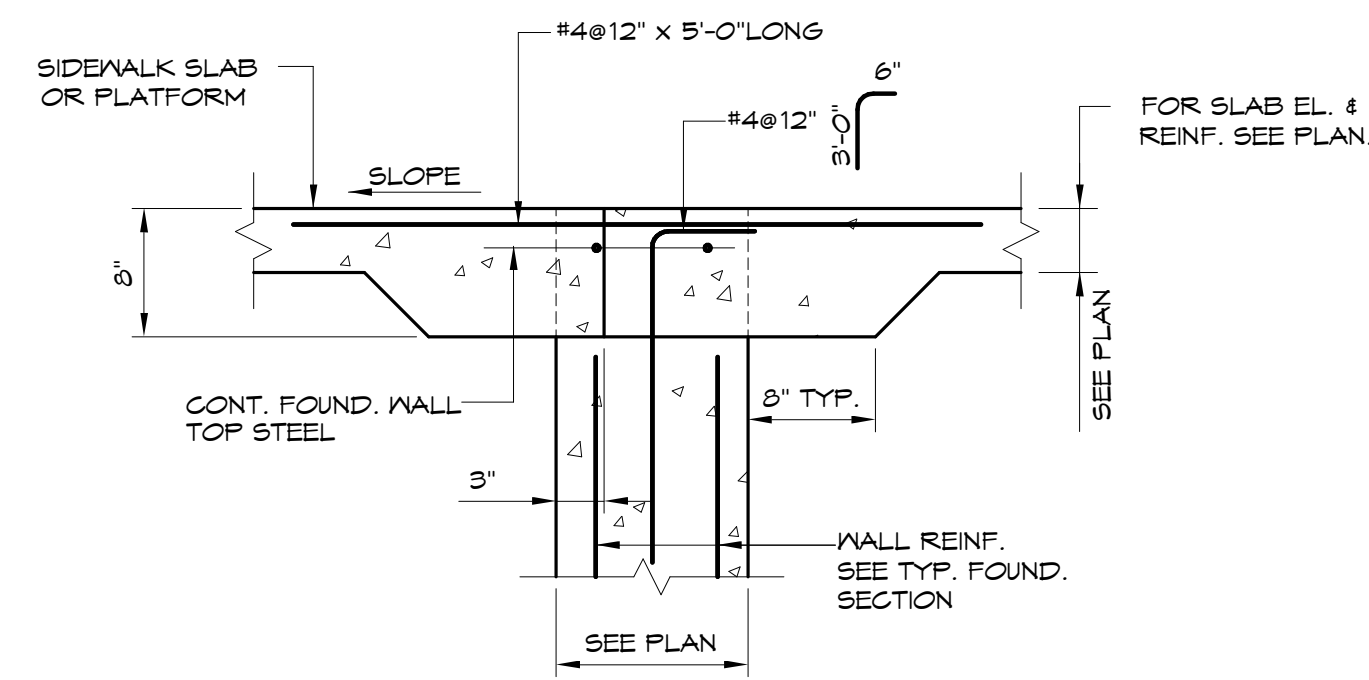
C TYPICAL SLAB ON GRADE CONSTRUCTION JOINT DETAIL
3/4" = 1'-0"



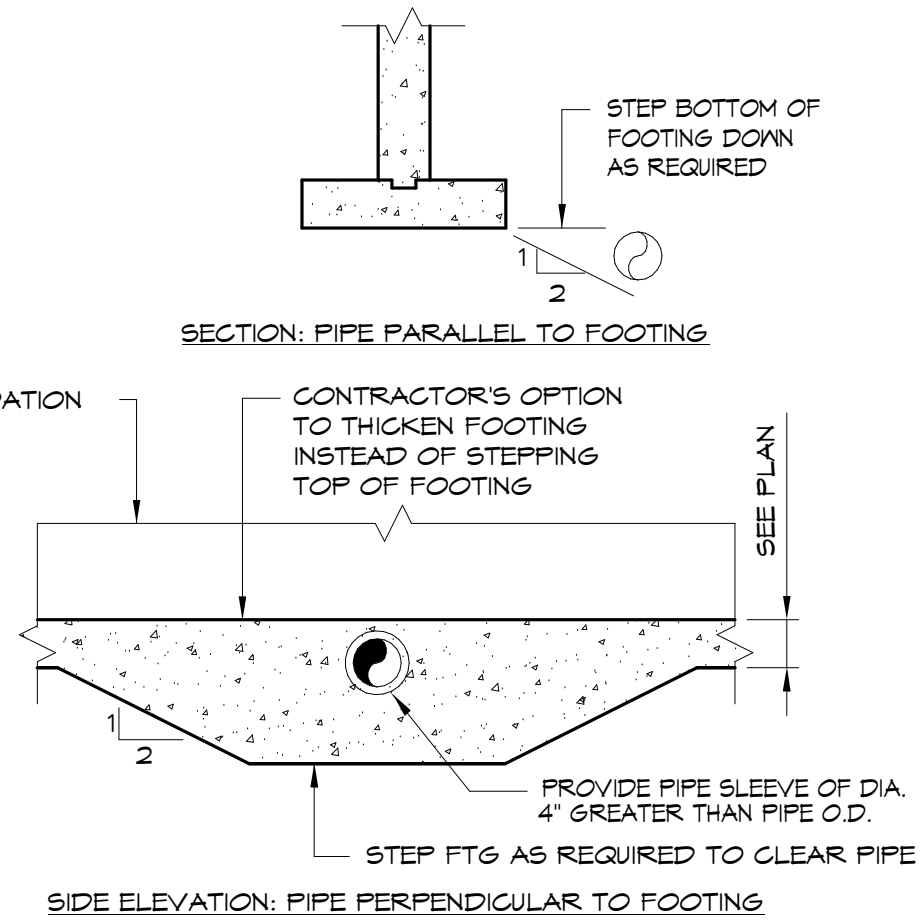
D TYPICAL SAW CUT CONTROL JOINT DETAIL
3/4" = 1'-0"



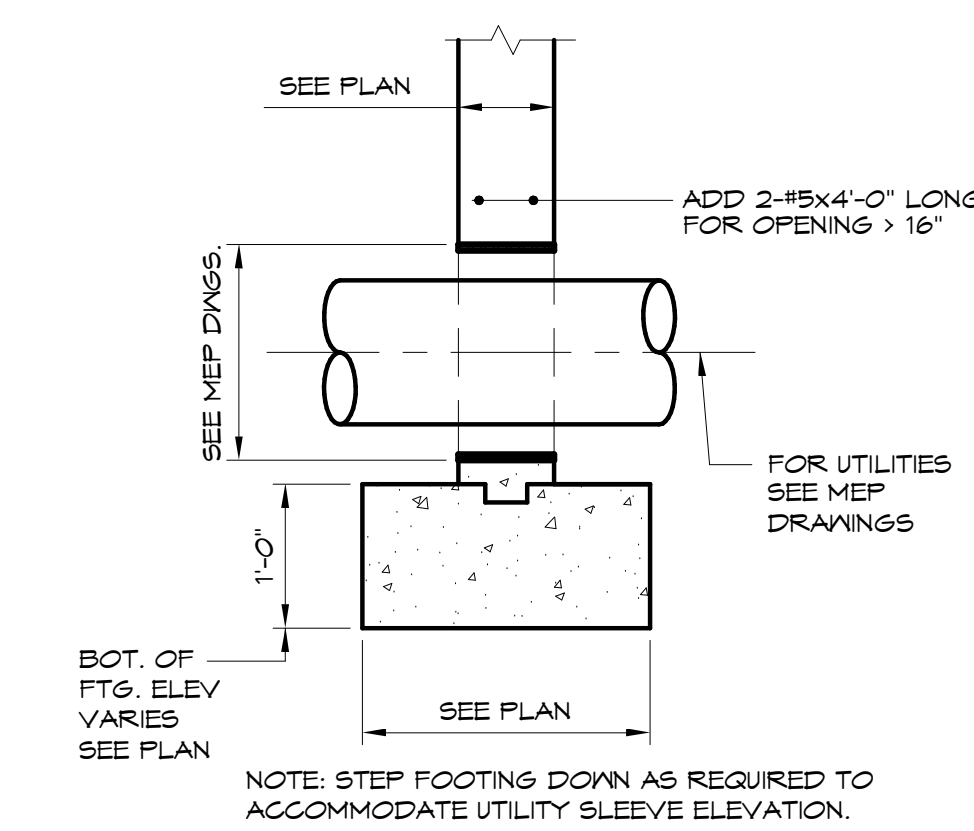
E TYPICAL WALL SECTION AT DOORWAY
TOW ELEVATION = -0'-8"
3/4" = 1'-0"



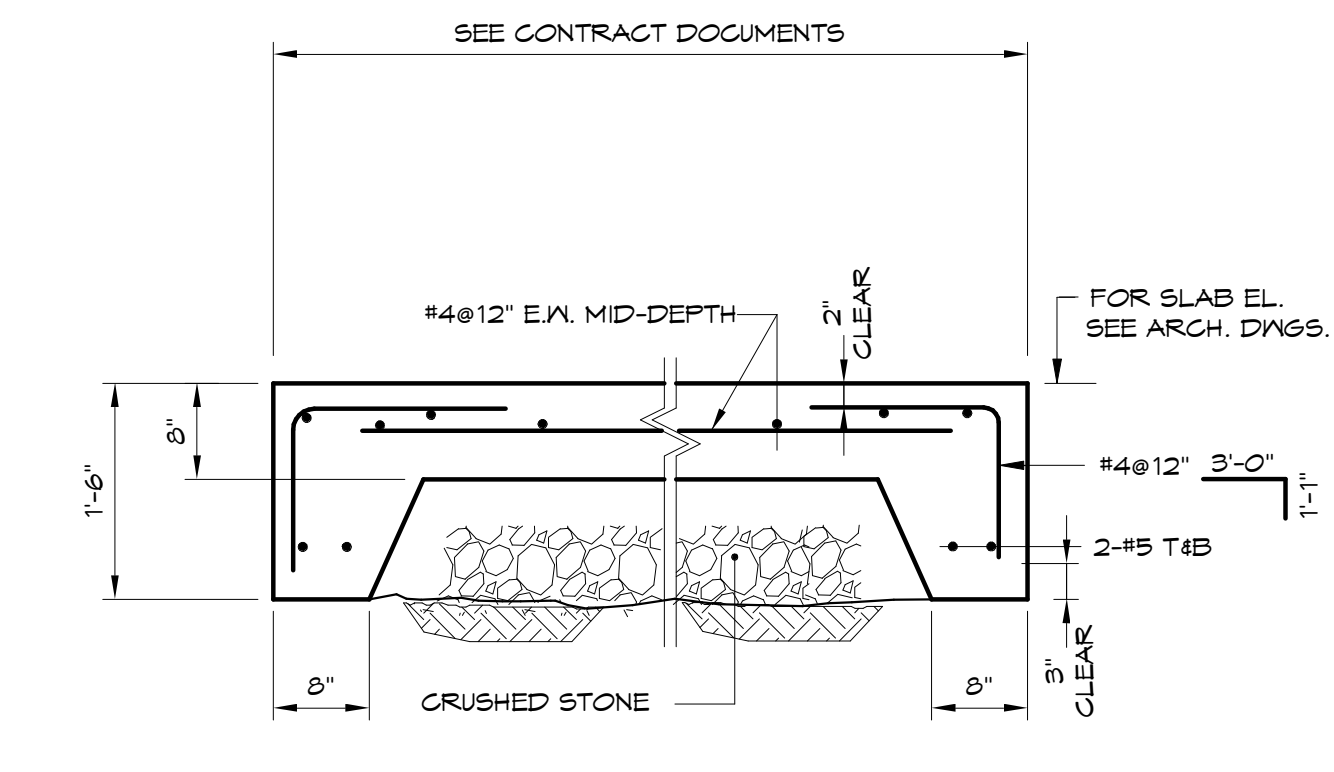
F TYPICAL WALL SECTION AT DOORWAY W/SIDEWALK OR PLATFORM
1" = 1'-0"



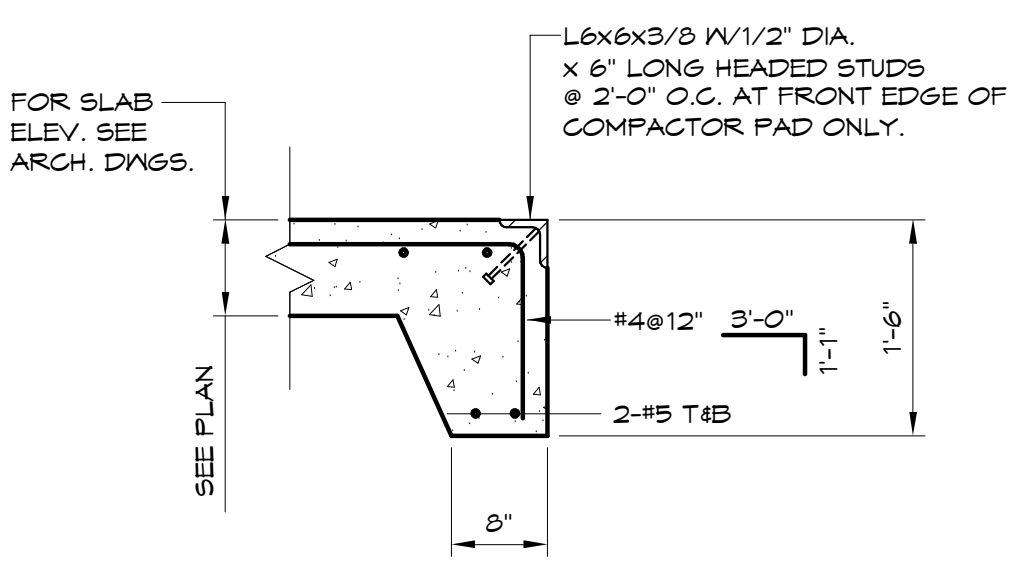
G TYPICAL FOOTING DETAILS AT PIPE
1/2" = 1'-0"



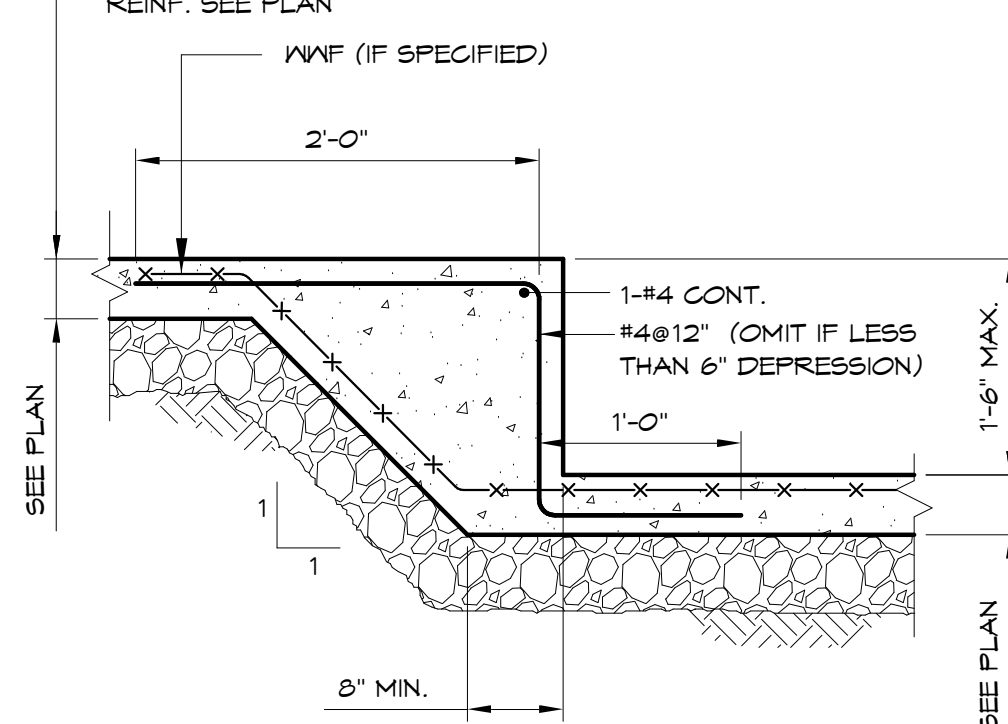
H TYPICAL UTILITY SLEEVE
3/4" = 1'-0"



J TYPICAL EXTERIOR COMPACTOR PAD DETAIL
3/4" = 1'-0"



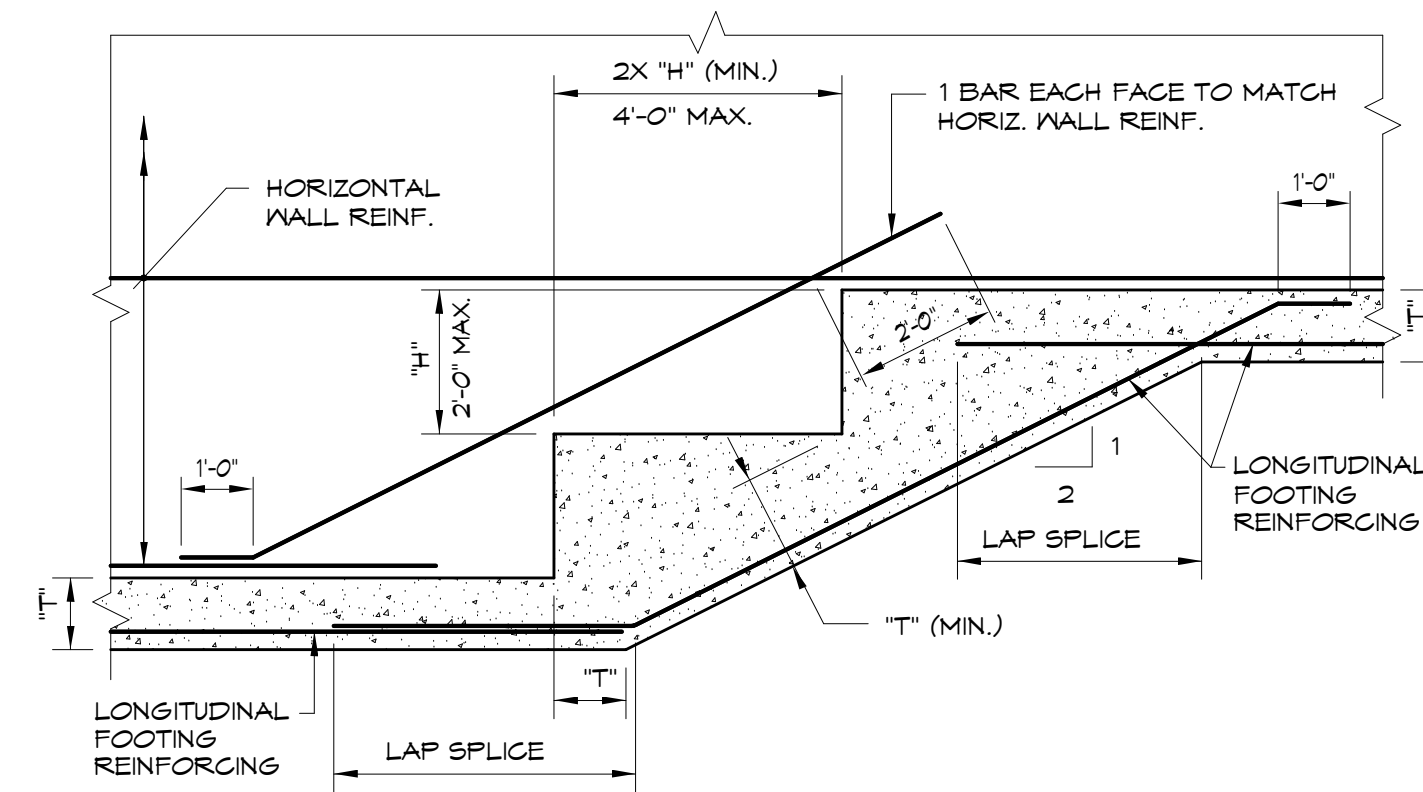
K TYPICAL EXTERIOR PAD EDGE DETAIL
3/4" = 1'-0" 3/4" = 1'-0" (16)



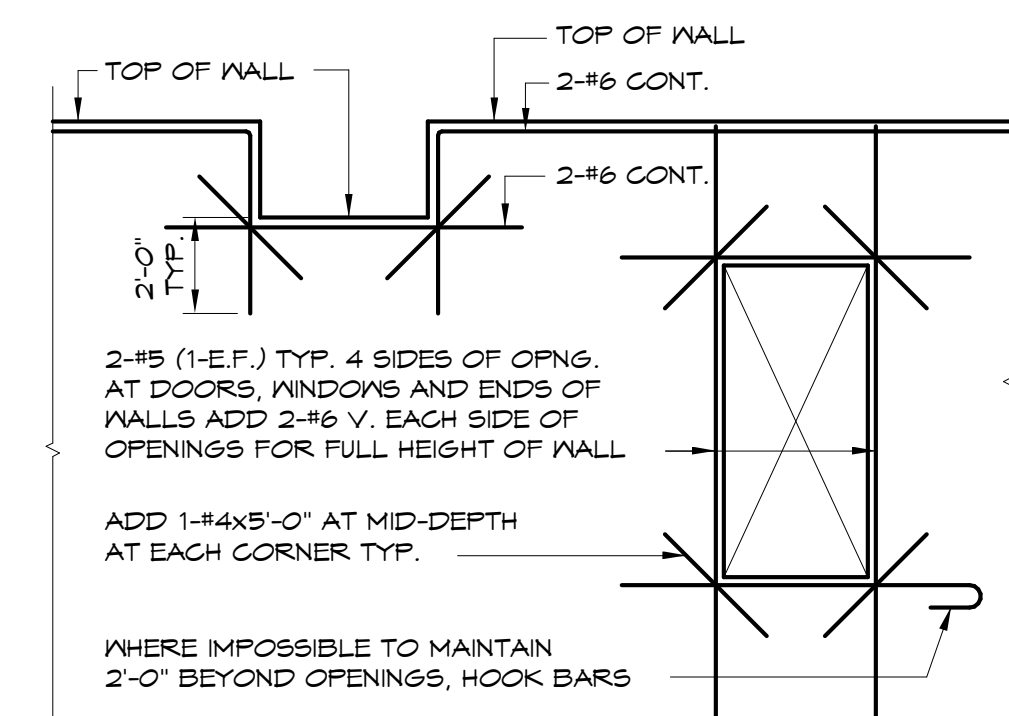
L DEPRESSION AT SLAB ON GRADE
3/4" = 1'-0"

| BAR SIZE | CONCRETE REINFORCING SPLICE SCHEDULE | | | | |
|----------|--------------------------------------|-----------------------|----------|-----------------------------|----------|
| | "LAP SPLICES" | "TENSION LAP SPLICES" | | "COMPRESSION" "LAP SPLICES" | |
| | | ALL CONCRETE | TOP BARS | OTHER BARS | TOP BARS |
| 3 | 14" | 28" | 21" | 24" | 19" |
| 4 | 18" | 31" | 29" | 32" | 25" |
| 5 | 23" | 46" | 36" | 40" | 31" |
| 6 | 27" | 56" | 43" | 48" | 37" |
| 7 | 32" | 61" | 63" | 70" | 53" |

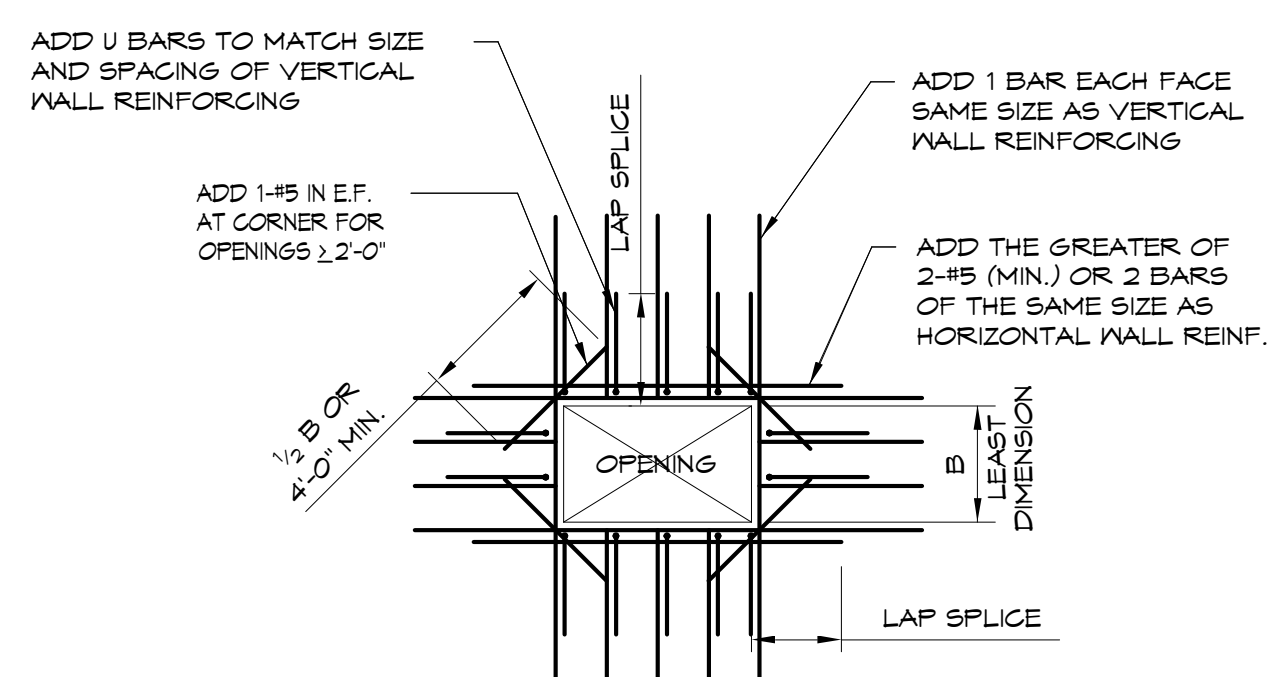
NOTES:
1. ALL SPLICES TO BE "LAP SPLICES" UNLESS NOTED OTHERWISE IN SECTIONS.
2. TENSION AND COMPRESSION LAP SPLICE WILL BE INDICATED ON PLANS AND SECTIONS.
3. A TOP BAR IS A HORIZONTAL WITH AT LEAST 12" OF FRESH CONCRETE BELOW.
4. EPOXY-COATED REINFORCING SPLICES SHALL BE INCREASED ACCORDING TO AC308.



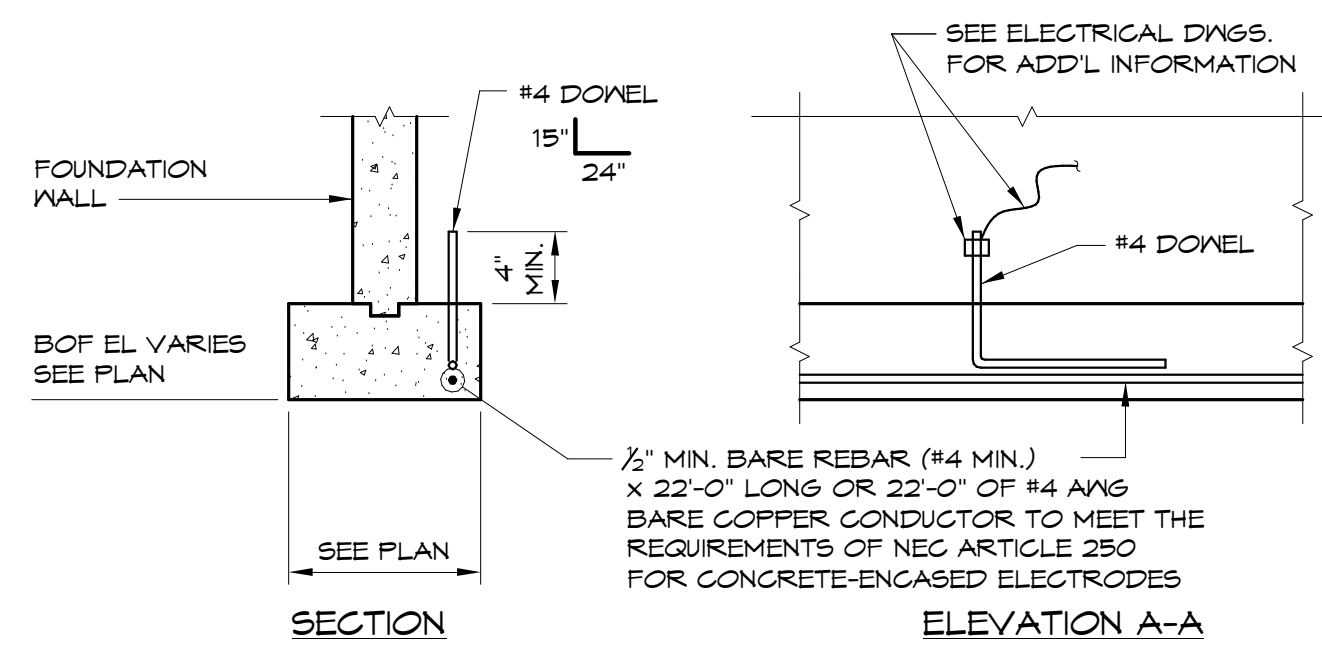
N CONTINUOUS STEPPED WALL FOOTING
3/8" = 1'-0"



P TYP. DETAIL AT OPENINGS AND BREAK IN WALLS
1/4" = 1'-0"

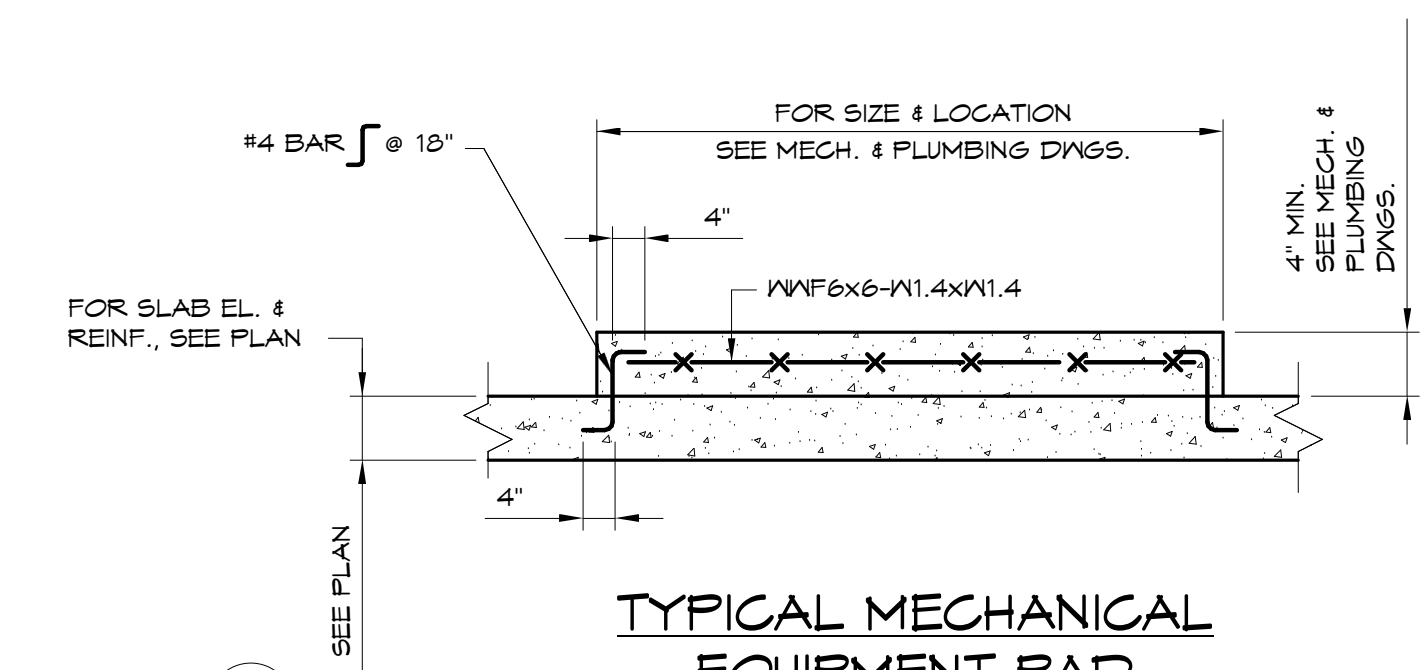


Q TYPICAL CONCRETE WALL OPENING
1/4" = 1'-0"

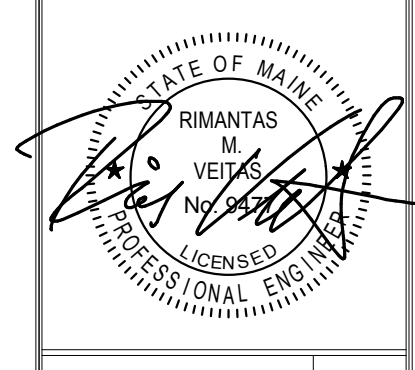


NOTE:
ONE (1) LOCATION MINIMUM REQUIRED PER BUILDING, SEE ELECTRICAL DRAWINGS. COORDINATE WITH GENERAL CONTRACTOR FOR LOCATION OF REBAR CONNECTION AND TO PROVIDE ACCESS TO THE REBAR CONNECTION UNTIL ELECTRICAL INSTALLATION AND INSPECTION ARE COMPLETE.

R CONCRETE ENCASED ELECTRODE
1/2" = 1'-0"



S TYPICAL MECHANICAL EQUIPMENT PAD
1/2" = 1'-0"



Prepared For:
NewHeight Group
118 Congress Street, Unit 401
Portland, Maine

Consulting Engineer:
VEITAS VEITAS engineers
68 Granite Street, Suite 101
Business, Scarborough, ME 04114
Tel: (708) 286-7444 Fax: (708) 286-2805

Architect:
ARCHETYPE architects
48 Union Wharf Portland, Maine 04101
(207) 775-6022 ARCHETYPE@ARCHETYPEPA.COM

Project:
LUMINATO
Newbury Street Portland, Maine

Revisions:
5/16/16 FOUNDATION PERMIT

Date: 04/19/16
Scale: As indicated
TYPICAL DETAILS

S202