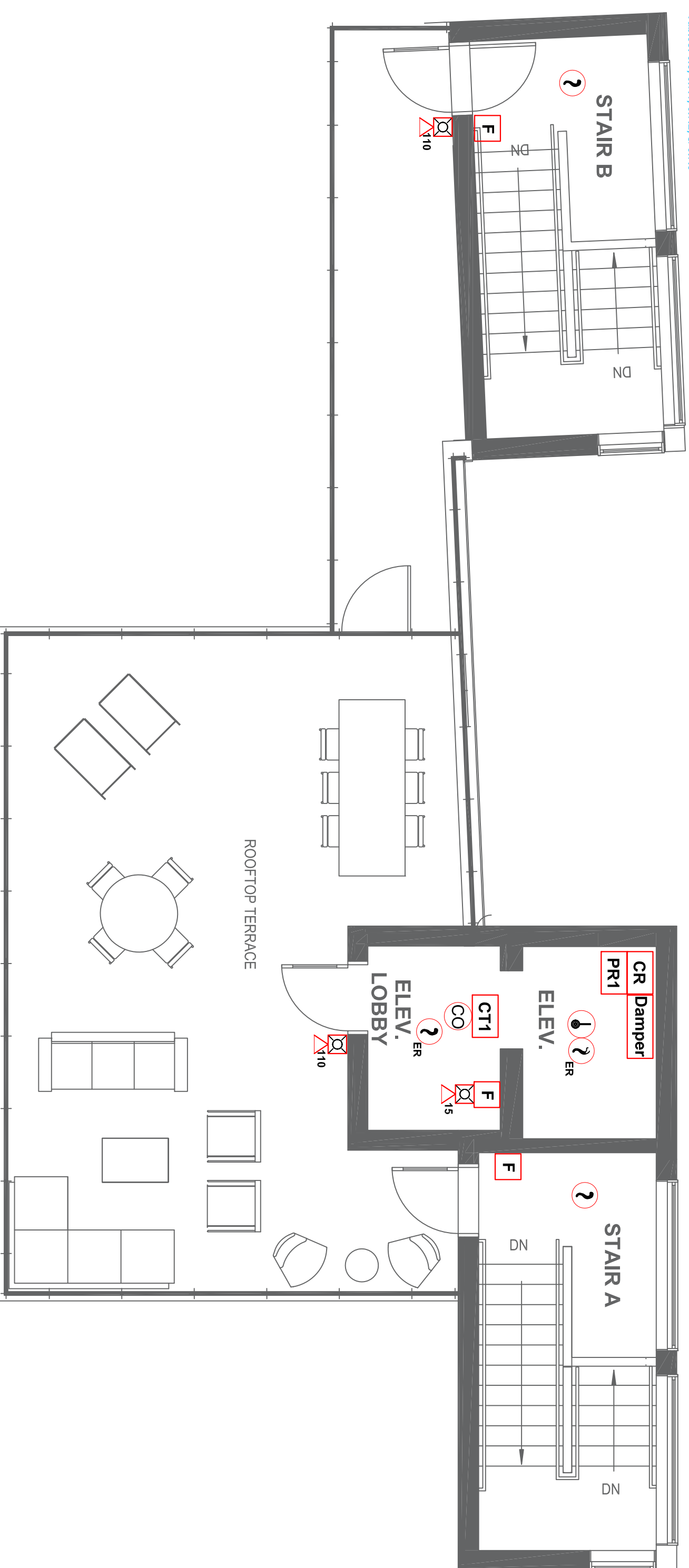


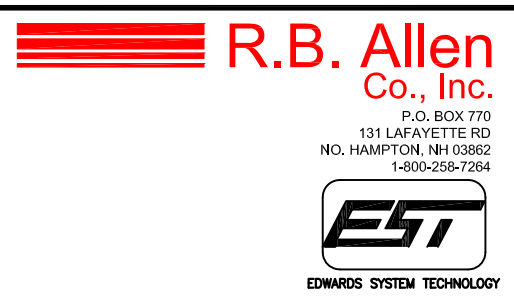
LEGEND:

| RISER DIAG SYM | NFPA SYMBOL* | DESCRIPTION | CATALOG # |
|----------------|--------------|---|----------------------|
| | FACP | Fire Alarm Control Panel | EST 10500RD |
| | FAA | Remote Annunciator | RLCD-CR |
| | FACU | Booster Power Supply | BPS10A |
| | P | Addressable Manual Station | SIGA-278 |
| | P | Conventional Weatherproof Manual station | MP9R2-54SW-GE |
| | ? | Addressable Smoke Detector w/ Base (ER indicates elevator recall(4a)(8b)) | SIGA-SB |
| | ? | Addressable Duct Smoke Detector | SIGA-SD |
| | ? | Addressable Heat Detector w/ Base | SIGA2-HFS SIGA-SB |
| | ? | Carbon Monoxide Detector | SD-TRK |
| | RTS | Carbon Monoxide Detector | SD-TRK |
| | RTS | Carbon Monoxide Detector | SD-TRK |
| | PR1 | Remote Test Switch | CO1224T |
| | PR1 | Multi-Voltage Relay | PR1 |
| | AM | Addressable Input Module [X Denotes Single or Double Input] | SIGA-CTX |
| | ADM | Addressable Control Module | SIGA-CR |
| | ADM | Synchronization Module | SIGA-CC1S |
| | X | Strobe Unit (Adjustable Candela) | G1F-VM |
| | X | Horn/Strobe Unit (Adjustable Candela) | G1F-HDVM |
| | X | Low Frequency Horn Unit | GG4LFWF-H |
| | X | Weather Proof Horn/Strobe Unit (Adjustable Candela) | 757-8A-T |
| | X | Sprinkler Tamper Switch | FBO |
| | X | Waterflow Switch | FBO |
| | X | Magnetic Door Holder | FBO |

* NFPA 170 (2009)
Tables: 6.5, 6.7.1, 6.7.2, & 6.7.3



DWG NAME: FA-009
**Luminato
Portland, ME
Floor Plan
Roof**
DWG No: FA-009



**Luminato
Portland, Maine
Floor Plan
Roof**
Contractor:
Deblois Electric, Inc.

JOB NAME:
Contractor:

| REV. | DESCRIPTION | DATE | DRWN: | RVW'D: |
|------|----------------|------|-------|--------|
| 0 | Original Issue | 1/17 | ENH | TRD |

SCALE: 1/8" = 1'0"

PO No. 91348
Luminato
Portland, ME
Floor Plan
Roof
DWG No. FA-009