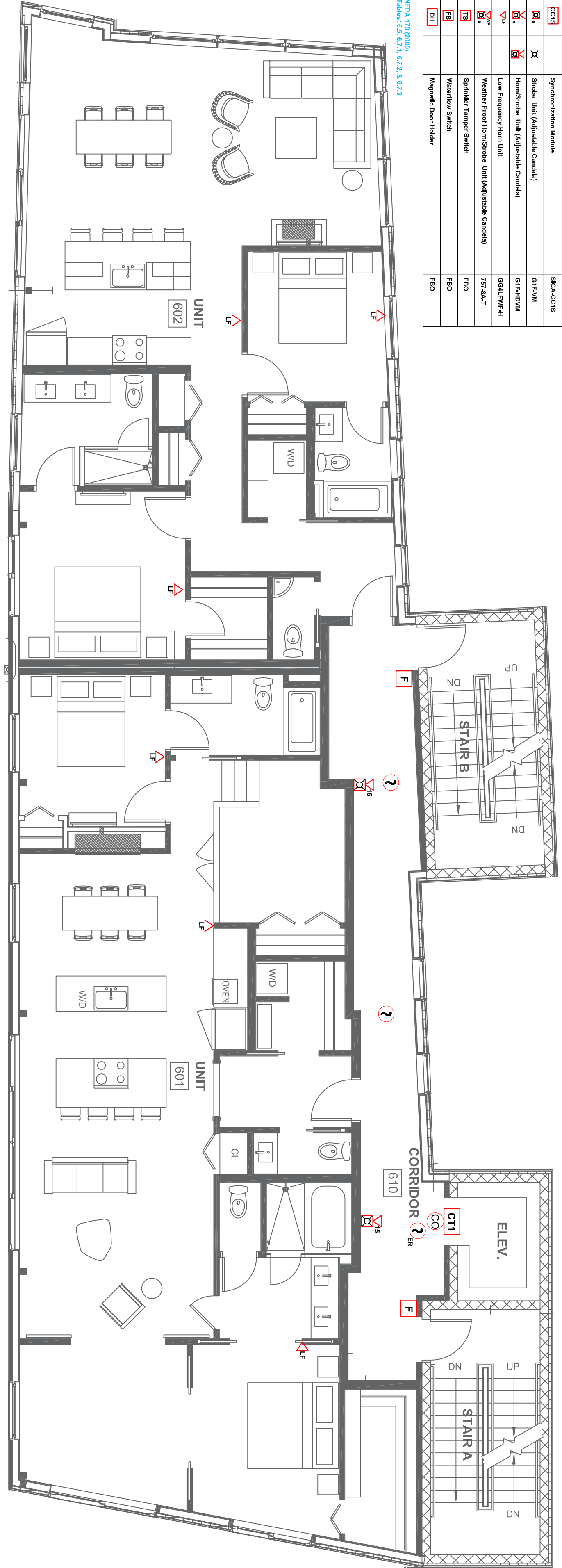


LEGEND:

RISER DIAG SYM	NFPA SYMBOL	DESCRIPTION	CATALOG #
FACP	FACP	Fire Alarm Control Panel	EST 10908RD
FAA	FAA	Remote Annunciator	RUCR-CR
BPS	FACU	Booster Power Supply	BPS10A
F	P	Addressable Manual Station	SIGA-Z78
F _{wp}	P	Conventional Weatherproof Manual station	MPSR3-45SW-GE
F _{sr}	?	Addressable Smoke Detector w/ Base (ER Indicates elevator not addressable)	SIGA-5B
?	?	Addressable Duct Smoke Detector	SIGA-SD
?	?	Addressable Heat Detector w/ Base	SIGA-4FS
?	?	Carbon Monoxide Detector	SIGA-5B
?	?	Addressable Heat Detector w/ Base	SD-TRK
?	?	Remote Test Switch	CO122AT
?	?	Remote Test Switch	PR1
?	?	Multi-Voltage Relay	PR1
?	?	Addressable Input Module (X Denotes Single or Double Input)	SIGA-CTX
?	?	Addressable Control Module	SIGA-CR
?	?	Addressable Control Module	SIGA-CCIS
?	?	Synchronization Module	SIGA-CCIS
?	?	Stroke Unit (Adjustable Candle)	GIF-4M
?	?	Horn/Stroke Unit (Adjustable Candle)	GIF-4DM
?	?	Low Frequency Horn Unit	G44LFW-FH
?	?	Weather Proof Horn/Stroke Unit (Adjustable Candle)	757-4A-T
?	?	Sprinkler Tamper Switch	FBO
?	?	Waterflow Switch	FBO
?	?	Magnetic Door Holder	FBO



NFPA 720 (9909)
Tables 6.5, 6.7.1, 6.7.2 & 6.7.3

PO No. 91348 Luminato Portland, ME Floor Plan 6th Floor DWG No. FA-008			
SCALE: 1/8" = 1'0"			
0	Original Issue	1/17	ENH TRD
REV.	DESCRIPTION	DATE	DRWN: RW'D:

JOB NAME:
**Luminato
Portland, Maine
Floor Plan
6th Floor**

Contractor:
Deblois Electric, Inc.

DWG NAME: FA-008
**Luminato
Portland, ME
Floor Plan
6th Floor**

DWG No: FA-008