



Package Cover Sheet

Created 11/4/2016 11:28:06 AM

PROJECT DETAILS

Project Name:	Luminato	Submitted By:	F W WEBB CO
Project Reference:	528340301618610176	Project Owner:	Anne Charpentier
		Submitted To:	

QUOTE DETAILS

Quote Name:	Luminato	Quote Notes:	
Revision:	1		
Quote Description:			

PRODUCT FILES INCLUDED IN THIS PACKAGE

REFERENCE	SUBMITTAL SHEETS	INSTALLATION MANUAL	OPERATION MANUAL	GUIDE SPECS	PRODUCT BROCHURE	REVIT DRAWING	CAD DRAWING	PRODUCT FLYER
2MXS18NMVJU	✓							
3MXS24NMVJU	✓							
4MXS36NMVJU	✓							
CDXS15LVJU	✓							
CDXS18LVJU	✓							
CDXS24LVJU	✓							
FDXS09LVJU	✓							
FDXS12LVJU	✓							
FTXS09LVJU	✓							
FTXS15LVJU	✓							
FBQ18PVJURZQ18 PVJU9	✓							



Submittal Data Sheet

2 PORT HP, DUCTLESS OD 1.5 TON - 2MXS18NMVJU

Project: Luminato

Submitted by: Anne Charpentier of F W WEBB CO on 11/4/2016

Submitted to: No Engineer Name Specified

FEATURES

- Up to 18.9 SEER / Up to 12.7 EER / Up to 12.5 HSPF
- High-efficiency inverter driven swing compressor
- Low ambient heating to 5°F / -4°F with optional drain pan heater
- Specialized drain pan design for improved cold climate drainage
- High-efficiency inverter driven swing compressor
- Cooling Operating Limit (14°~114.8°F/-10°~46°C)
- Heating Operating Limit (5°~59.9°F/-15°~15.5°C)
- Anti-corrosion treatment of outdoor heat exchanger
- Specialized drain pan design for improved cold climate drainage
- Chargeless 98.4ft (30 m)

BENEFITS

- 12 Year limited parts warranty with online registration
- 5 Year limited parts warranty for commercial applications
- High efficiency cooling and heating operation provides utility bill savings
- Multiple indoor unit style options: wall mounted, floor standing, ceiling cassette, slim duct
- May qualify for regional utility rebates and incentives
- Compatible with optional Daikin ENVi Wi-Fi capable Smart Control
- 12 Year limited parts warranty with online registration
- 5 Year limited parts warranty for commercial applications
- Priority-room setting
- COOL / HEAT mode lock
- High efficiency cooling and heating operation provides utility bill savings
- Multiple indoor unit style options: wall mounted, floor standing, ceiling cassette, slim duct





Submittal Data Sheet

2 PORT HP, DUCTLESS OD 1.5 TON - 2MXS18NMVJU

Project: Luminato

Submitted by: Anne Charpentier of F W WEBB CO on 11/4/2016

Submitted to: No Engineer Name Specified

PERFORMANCE

Outdoor Unit Model No.	2MXS18NMVJU	Outdoor Unit Name:	2 PORT HP, DUCTLESS OD 1.5 TON
Type:	Heat Pump		
Rated Cooling Conditions:	Indoor (°F DB/DB): 80 / 67 Ambient (°F DB/WB): 95 / 75	Rated Heating Conditions:	Indoor (°F DB/WB): 70 / 60 Ambient (°F DB/WB): 47 / 43
Rated Piping Length(ft):	25		
Rated Height Difference (ft):	49.00		
Rated Cooling Capacity (Btu/hr):	18,000	Rated Heating Capacity (Btu/hr):	18,900
Cooling Input Power (kW):		Heating Input Power (kW):	
EER (Non-Ducted/Ducted):	12.50 / 9.50	Heating COP (Non-Ducted/Ducted):	4.1 / 4.1
SEER (Non-Ducted/Ducted):	18.90 / 14.00	HSPF (Non-Ducted/Ducted):	10.7 / 8.2
Max/Min Cooling Capacity (Btu/hr):	21,000 /	Max/Min Heating Capacity (Btu/hr):	25,000 /

OUTDOOR UNIT DETAILS

Power Supply (V/Hz/Ph):	208-230 / 60 / 1	Compressor Type:	Inverter
Power Supply Connections:	L1, L2, Ground	Capacity Control Range (%):	-
Min. Circuit Amps MCA (A):	15.80	Airflow Rate (H) (CFM):	2,150
Max Overcurrent Protection (MOP) (A):	20.00	Gas Pipe Connection (inch):	3/8
Max Starting Current MSC(A):	14.00	Liquid Pipe Connection (inch):	1/4
Rated Load Amps RLA(A):	14.0	Sound Pressure (H) (dBA):	50
Dimensions (HxWxD) (in):	28-15/16 x 34-1/4 x 12-5/8	Sound Power Level (dBA):	
Net Weight (lb):	123		



Submittal Data Sheet

2 PORT HP, DUCTLESS OD 1.5 TON - 2MXS18NMVJU

Project: Luminato

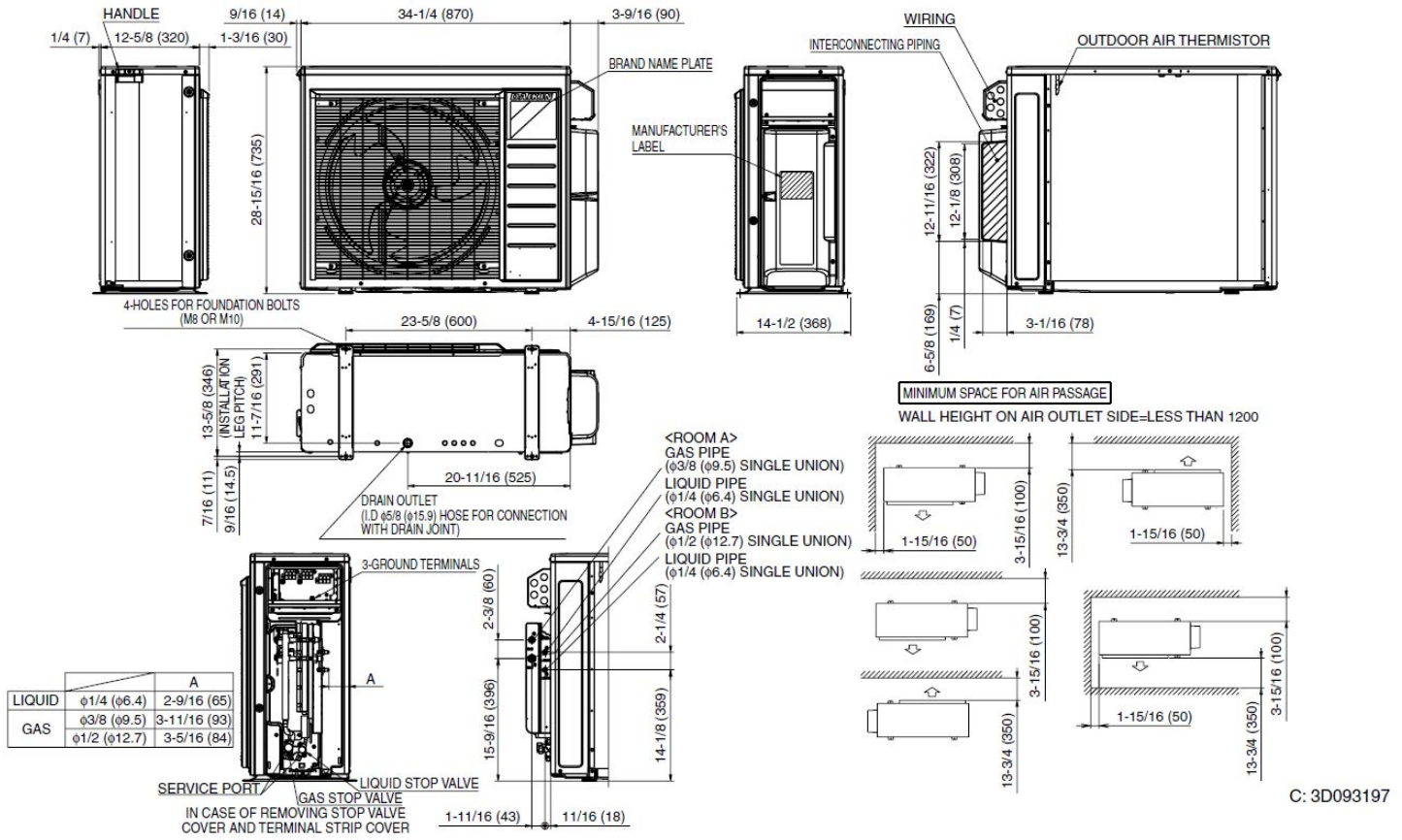
Submitted by: Anne Charpentier of F W WEBB CO on 11/4/2016

Submitted to: No Engineer Name Specified

SYSTEM DETAILS

Refrigerant Type:	R-410A	Cooling Operation Range (°F DB):	14 - 115
Holding Refrigerant Charge (lbs):	3.9	Heating Operation Range (°F WB):	5 - 72
Additional Charge (lb/ft):	0.01	Max. Pipe Length (Vertical) (ft):	49
Pre-charge Piping (Length) (ft):	98	Cooling Range w/Baffle (°F DB):	14 - 115
Max. Pipe Length (Total) (ft):	164	Heating Range w/Baffle (°F WB):	-4 - 72
Max Height Separation (Ind to Ind ft):	49		

DIMENSIONAL DRAWING





Submittal Data Sheet

3 PORT HP, DUCTLESS OD 2 TON - 3MXS24NMVJU

Project: Luminato

Submitted by: Anne Charpentier of F W WEBB CO on 11/4/2016

Submitted to: No Engineer Name Specified

FEATURES

- Up to 18.9 SEER / Up to 12.7 EER / Up to 12.5 HSPF
- High-efficiency inverter driven swing compressor
- Low ambient heating to 5°F / -4°F with optional drain pan heater
- Specialized drain pan design for improved cold climate drainage
- High-efficiency inverter driven swing compressor
- Cooling Operating Limit (14°~114.8°F/-10°~46°C)
- Heating Operating Limit (5°~59.9°F/-15°~15.5°C)
- Anti-corrosion treatment of outdoor heat exchanger
- Specialized drain pan design for improved cold climate drainage
- Chargeless 131.6ft (40 m)

BENEFITS

- 12 Year limited parts warranty with online registration
- 5 Year limited parts warranty for commercial applications
- High efficiency cooling and heating operation provides utility bill savings
- Multiple indoor unit style options: wall mounted, floor standing, ceiling cassette, slim duct
- May qualify for regional utility rebates and incentives
- Compatible with optional Daikin ENVi Wi-Fi capable Smart Control
- 12 Year limited parts warranty with online registration
- 5 Year limited parts warranty for commercial applications
- Priority-room setting
- COOL / HEAT mode lock
- High efficiency cooling and heating operation provides utility bill savings
- Multiple indoor unit style options: wall mounted, floor standing, ceiling cassette, slim duct





Submittal Data Sheet

3 PORT HP, DUCTLESS OD 2 TON - 3MXS24NMVJU

Project: Luminato

Submitted by: Anne Charpentier of F W WEBB CO on 11/4/2016

Submitted to: No Engineer Name Specified

PERFORMANCE

Outdoor Unit Model No.	3MXS24NMVJU	Outdoor Unit Name:	3 PORT HP, DUCTLESS OD 2 TON
Type:	Heat Pump		
Rated Cooling Conditions:	Indoor (°F DB/DB): 80 / 67 Ambient (°F DB/WB): 95 / 75	Rated Heating Conditions:	Indoor (°F DB/WB): 70 / 60 Ambient (°F DB/WB): 47 / 43
Rated Piping Length(ft):	25		
Rated Height Difference (ft):	49.00		
Rated Cooling Capacity (Btu/hr):	24,000	Rated Heating Capacity (Btu/hr):	24,000
Cooling Input Power (kW):	Heating Input Power (kW):		
EER (Non-Ducted/Ducted):	12.70 / 9.70	Heating COP (Non-Ducted/Ducted):	4.6 / 3.2
SEER (Non-Ducted/Ducted):	17.90 / 14.00	HSPF (Non-Ducted/Ducted):	12.5 / 8.2
Max/Min Cooling Capacity (Btu/hr):	30,000 /	Max/Min Heating Capacity (Btu/hr):	36,000 /

OUTDOOR UNIT DETAILS

Power Supply (V/Hz/Ph):	208-230 / 60 / 1	Compressor Type:	Inverter
Power Supply Connections:	L1, L2, Ground	Capacity Control Range (%):	-
Min. Circuit Amps MCA (A):	18.70	Airflow Rate (H) (CFM):	2,094
Max Overcurrent Protection (MOP) (A):	20.00	Gas Pipe Connection (inch):	1/2
Max Starting Current MSC(A):	15.50	Liquid Pipe Connection (inch):	1/4
Rated Load Amps RLA(A):	15.5	Sound Pressure (H) (dBA):	52
Dimensions (HxWxD) (in):	28-15/16 x 34-1/4 x 12-5/8	Sound Power Level (dBA):	
Net Weight (lb):	137		



Submittal Data Sheet

3 PORT HP, DUCTLESS OD 2 TON - 3MXS24NMVJU

Project: Luminato

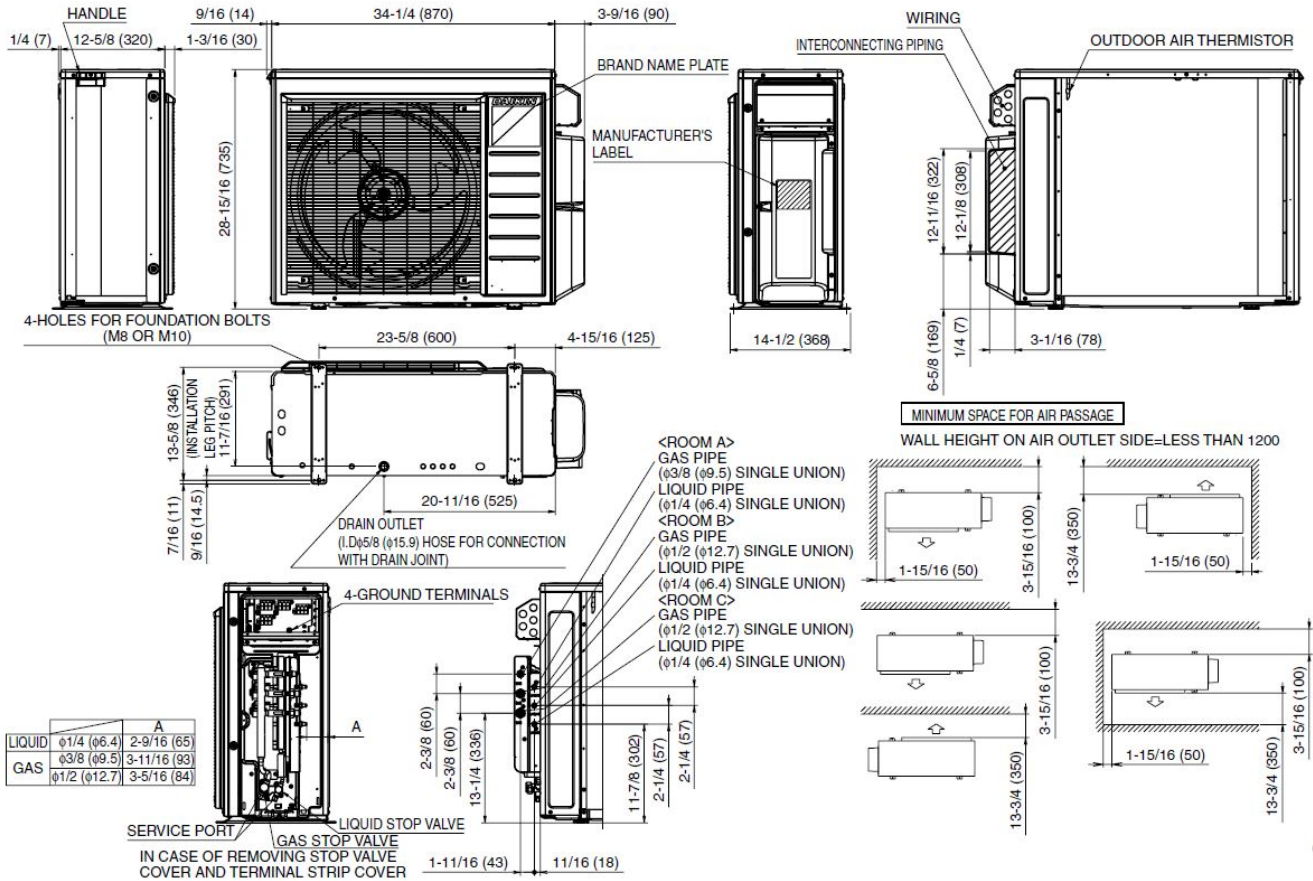
Submitted by: Anne Charpentier of F W WEBB CO on 11/4/2016

Submitted to: No Engineer Name Specified

SYSTEM DETAILS

Refrigerant Type:	R-410A	Cooling Operation Range (°F DB):	14 - 115
Holding Refrigerant Charge (lbs):	6.2	Heating Operation Range (°F WB):	5 - 72
Additional Charge (lb/ft):	0.01	Max. Pipe Length (Vertical) (ft):	49
Pre-charge Piping (Length) (ft):	132	Cooling Range w/Baffle (°F DB):	14 - 115
Max. Pipe Length (Total) (ft):	230	Heating Range w/Baffle (°F WB):	-4 - 72
Max Height Separation (Ind to Ind ft):	49		

DIMENSIONAL DRAWING





Submittal Data Sheet

4 PORT HP, DUCTLESS OD 3 TON - 4MXS36NMVJU

Project: Luminato

Submitted by: Anne Charpentier of F W WEBB CO on 11/4/2016

Submitted to: No Engineer Name Specified

FEATURES

- Up to 18.9 SEER / Up to 12.7 EER / Up to 12.5 HSPF
- High-efficiency inverter driven swing compressor
- Low ambient heating to 5°F / -4°F with optional drain pan heater
- Specialized drain pan design for improved cold climate drainage
- High-efficiency inverter driven swing compressor
- Cooling Operating Limit (14°~114.8°F/-10°~46°C)
- Heating Operating Limit (5°~59.9°F/-15°~15.5°C)
- Anti-corrosion treatment of outdoor heat exchanger
- Specialized drain pan design for improved cold climate drainage
- Chargeless 131.6ft (40 m)

BENEFITS

- 12 Year limited parts warranty with online registration
- 5 Year limited parts warranty for commercial applications
- High efficiency cooling and heating operation provides utility bill savings
- Multiple indoor unit style options: wall mounted, floor standing, ceiling cassette, slim duct
- May qualify for regional utility rebates and incentives
- Compatible with optional Daikin ENVi Wi-Fi capable Smart Control
- 12 Year limited parts warranty with online registration
- 5 Year limited parts warranty for commercial applications
- Priority-room setting
- COOL / HEAT mode lock
- High efficiency cooling and heating operation provides utility bill savings
- Multiple indoor unit style options: wall mounted, floor standing, ceiling cassette, slim duct





Submittal Data Sheet

4 PORT HP, DUCTLESS OD 3 TON - 4MXS36NMVJU

Project: Luminato

Submitted by: Anne Charpentier of F W WEBB CO on 11/4/2016

Submitted to: No Engineer Name Specified

PERFORMANCE

Outdoor Unit Model No.	4MXS36NMVJU	Outdoor Unit Name:	4 PORT HP, DUCTLESS OD 3 TON
Type:	Heat Pump		
Rated Cooling Conditions:	Indoor (°F DB/DB): 80 / 67 Ambient (°F DB/WB): 95 / 75	Rated Heating Conditions:	Indoor (°F DB/WB): 70 / 60 Ambient (°F DB/WB): 47 / 43
Rated Piping Length(ft):	25		
Rated Height Difference (ft):	49.00		
Rated Cooling Capacity (Btu/hr):	36,000	Rated Heating Capacity (Btu/hr):	36,000
Cooling Input Power (kW):	Heating Input Power (kW):		
EER (Non-Ducted/Ducted):	9.20 / 7.90	Heating COP (Non-Ducted/Ducted):	4.5 / 3.5
SEER (Non-Ducted/Ducted):	17.70 / 14.00	HSPF (Non-Ducted/Ducted):	12.2 / 8.2
Max/Min Cooling Capacity (Btu/hr):	38,000 /	Max/Min Heating Capacity (Btu/hr):	43,000 /

OUTDOOR UNIT DETAILS

Power Supply (V/Hz/Ph):	208-230 / 60 / 1	Compressor Type:	Inverter
Power Supply Connections:	L1, L2, Ground	Capacity Control Range (%):	-
Min. Circuit Amps MCA (A):	19.75	Airflow Rate (H) (CFM):	2,613
Max Overcurrent Protection (MOP) (A):	20.00	Gas Pipe Connection (inch):	1/2
Max Starting Current MSC(A):	17.50	Liquid Pipe Connection (inch):	1/4
Rated Load Amps RLA(A):	17.5	Sound Pressure (H) (dBA):	54
Dimensions (HxWxD) (in):	28-15/16 x 34-1/4 x 12-5/8	Sound Power Level (dBA):	
Net Weight (lb):	139		



Submittal Data Sheet

4 PORT HP, DUCTLESS OD 3 TON - 4MXS36NMVJU

Project: Luminato

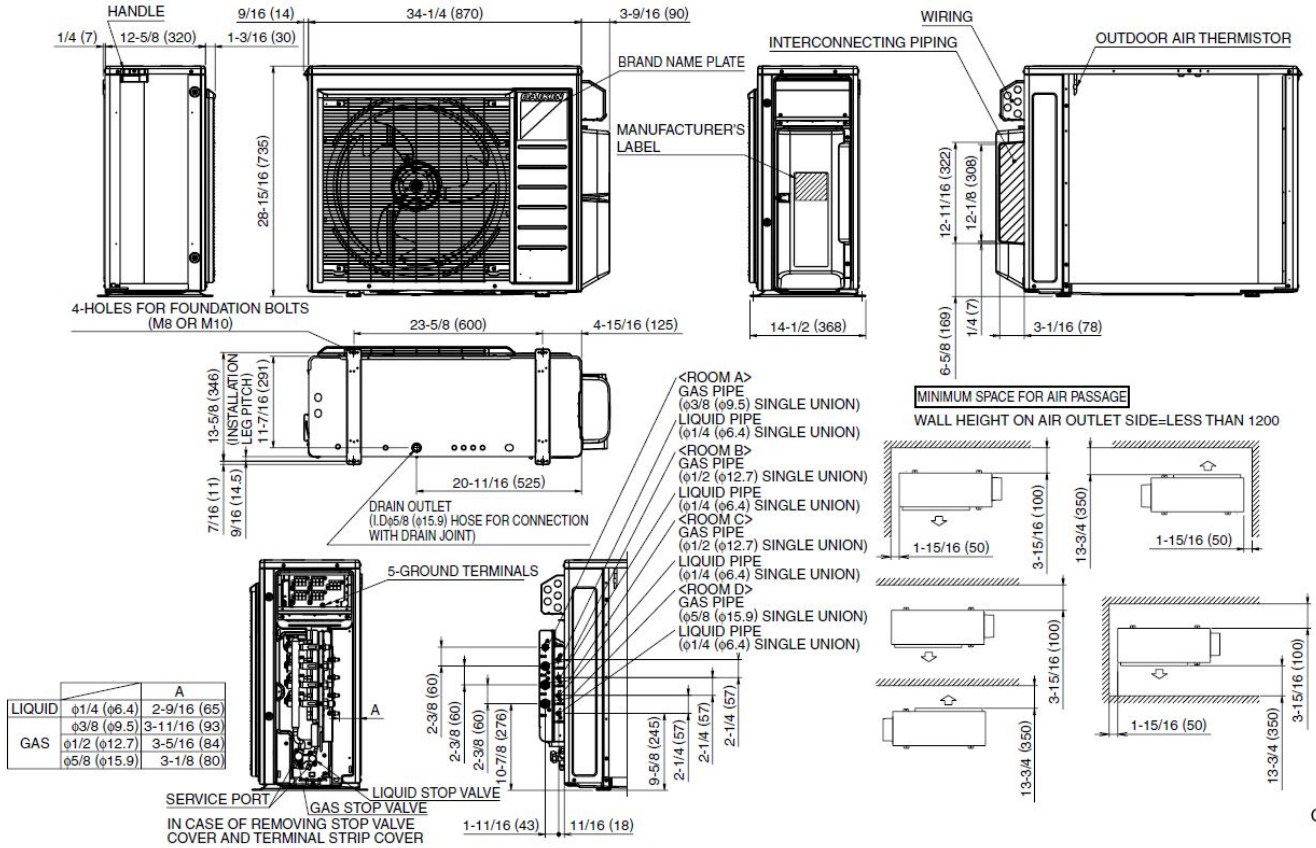
Submitted by: Anne Charpentier of F W WEBB CO on 11/4/2016

Submitted to: No Engineer Name Specified

SYSTEM DETAILS

Refrigerant Type:	R-410A	Cooling Operation Range (°F DB):	14 - 115
Holding Refrigerant Charge (lbs):	6.2	Heating Operation Range (°F WB):	5 - 72
Additional Charge (lb/ft):	0.01	Max. Pipe Length (Vertical) (ft):	49
Pre-charge Piping (Length) (ft):	132	Cooling Range w/Baffle (°F DB):	14 - 115
Max. Pipe Length (Total) (ft):	230	Heating Range w/Baffle (°F WB):	-4 - 72
Max Height Separation (Ind to Ind ft):	49		

DIMENSIONAL DRAWING



C: 3D093199



Submittal Data Sheet

1.25-Ton Slim Duct Built-in Concealed Ceiling Unit - CDXS15LVJU

Project: Luminato

Submitted by: Anne Charpentier of F W WEBB CO on 11/4/2016

Submitted to: No Engineer Name Specified

FEATURES

- Static capability up to 0.16" W.G.
- Rear or bottom return
- Econo Mode for increased energy savings
- 12 year limited parts and compressor warranty with online registration
- IR controller included
- Air filter (prefilter)
- External Static Pressure .12inAq
- Hot start technology
- Auto-restart (after power failure)

BENEFITS

- Compact design
- LCD wireless remote with backlit display
- Quiet operation
- 12 year limited parts and compressor warranty with online registration
- 5 Year limited parts warranty for commercial applications





Submittal Data Sheet

1.25-Ton Slim Duct Built-in Concealed Ceiling Unit - CDXS15LVJU

Project: Luminato

Submitted by: Anne Charpentier of F W WEBB CO on 11/4/2016

Submitted to: No Engineer Name Specified

PERFORMANCE

Indoor Unit Model No.	CDXS15LVJU	Indoor Unit Name:	1.25-Ton Slim Duct Built-in Concealed Ceiling Unit
Type:	Ducted	Rated Cooling Conditions:	Indoor (°F DB/WB): 80 / 67 Ambient (°F DB/WB): 95 / 75
Rated Cooling Capacity (Btu/hr):	15,000	Rated Heating Conditions:	Indoor (°F DB/WB): 70 / 60 Ambient (°F DB/WB): 47 / 43
Sensible Capacity (Btu/hr):		Rated Piping Length(ft):	
Cooling Input Power (kW):	0.170	Rated Height Separation (ft):	
Rated Heating Capacity (Btu/hr):	15,000		
Heating Input Power (kW):	0.17		

INDOOR UNIT DETAILS

Power Supply (V/Hz/Ph):	208-230 / 60 / 1	Airflow Rate (H/M/L/SL) (CFM):	424/388/353/297
Power Supply Connections:	See Outdoor Unit for Electrical Specs	Moisture Removal (Gal/hr):	
Min. Circuit Amps MCA (A):		Gas Pipe Connection (inch):	1/2
Max Overcurrent Protection (MOP) (A):		Liquid Pipe Connection (inch):	1/4
Dimensions (HxWxD) (in):	7-7/8 x 35-7/16 x 24-7/16	Condensate Connection (inch):	25/32
Panel (HxWxD) (in):		Sound Pressure (H/M/L/SL) (dBA):	37/35/33/31
Net Weight (lb):	60	Sound Power Level (dBA):	
Panel Weight (lb):		Ext. Static Pressure (Rated/Max) (inWg):	0.16 / 0.16

Submittal Data Sheet

1.25-Ton Slim Duct Built-in Concealed Ceiling Unit - CDXS15LVJU

Project: Luminato

Submitted by: Anne Charpentier of F W WEBB CO on 11/4/2016

Submitted to: No Engineer Name Specified

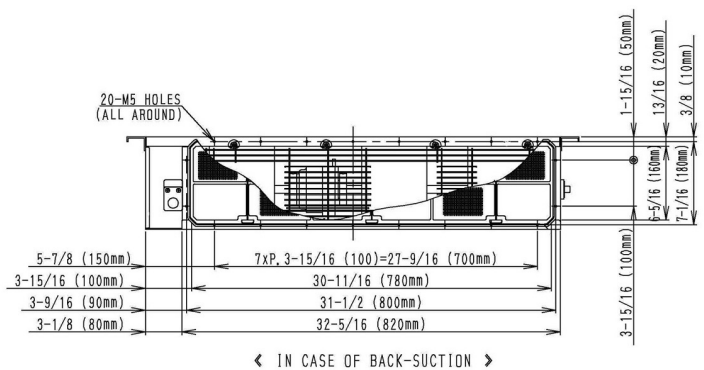
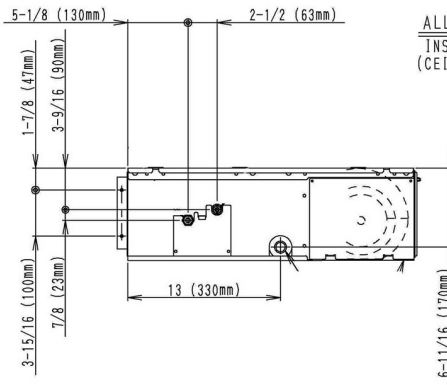
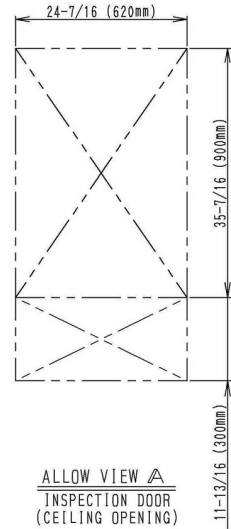
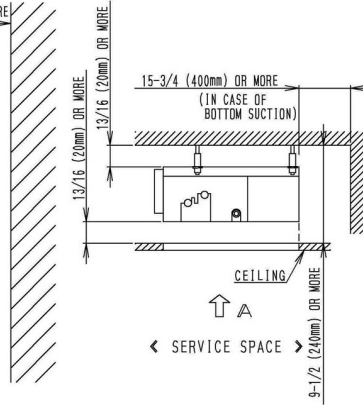
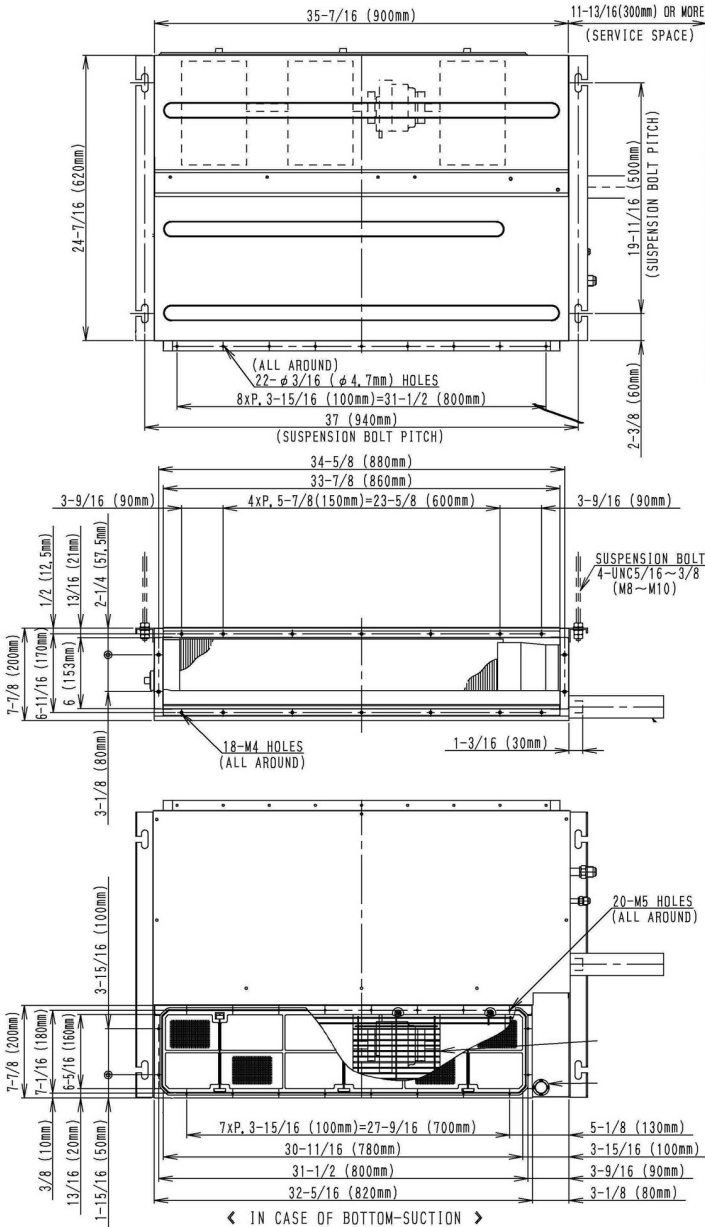
DIMENSIONAL DRAWING

Ductwork Opening:

Model No.	Supply Opening		Return Opening	
	Height	Width	Height	Width
CDXS15,18LVJU	6-11/16"	34-5/8"	7-1/16"	31-1/2"

(Note: Opening dimension base on Fixing Hole Center)

CDXS15_18LVJU





Submittal Data Sheet

1.5-Ton Slim Duct Built-in Concealed Ceiling Unit - CDXS18LVJU

Project: Luminato

Submitted by: Anne Charpentier of F W WEBB CO on 11/4/2016

Submitted to: No Engineer Name Specified

FEATURES

- Static capability up to 0.16" W.G.
- Rear or bottom return
- Econo Mode for increased energy savings
- LCD wireless remote with backlit display
- 12 year limited parts and compressor warranty with online registration
- IR controller included
- Air filter (prefilter)
- External Static Pressure .12inAq
- Hot start technology
- Auto-restart (after power failure)

BENEFITS

- Compact design
- Quiet operation
- 12 year limited parts and compressor warranty with online registration
- 5 Year limited parts warranty for commercial applications





Submittal Data Sheet

1.5-Ton Slim Duct Built-in Concealed Ceiling Unit - CDXS18LVJU

Project: Luminato

Submitted by: Anne Charpentier of F W WEBB CO on 11/4/2016

Submitted to: No Engineer Name Specified

PERFORMANCE

Indoor Unit Model No.	CDXS18LVJU	Indoor Unit Name:	1.5-Ton Slim Duct Built-in Concealed Ceiling Unit
Type:	Ducted	Rated Cooling Conditions:	Indoor (°F DB/WB): 80 / 67 Ambient (°F DB/WB): 95 / 75
Rated Cooling Capacity (Btu/hr):	18,000	Rated Heating Conditions:	Indoor (°F DB/WB): 70 / 60 Ambient (°F DB/WB): 47 / 43
Sensible Capacity (Btu/hr):		Rated Piping Length(ft):	
Cooling Input Power (kW):	0.170	Rated Height Separation (ft):	
Rated Heating Capacity (Btu/hr):	18,000		
Heating Input Power (kW):	0.17		

INDOOR UNIT DETAILS

Power Supply (V/Hz/Ph):	208-230 / 60 / 1	Airflow Rate (H/M/L/SL) (CFM):	424/388/353/297
Power Supply Connections:	See Outdoor Unit for Electrical Specs	Moisture Removal (Gal/hr):	
Min. Circuit Amps MCA (A):		Gas Pipe Connection (inch):	1/2
Max Overcurrent Protection (MOP) (A):		Liquid Pipe Connection (inch):	1/4
Dimensions (HxWxD) (in):	7-7/8 x 35-7/16 x 24-7/16	Condensate Connection (inch):	25/32
Panel (HxWxD) (in):		Sound Pressure (H/M/L/SL) (dBA):	37/35/33/31
Net Weight (lb):	60	Sound Power Level (dBA):	
Panel Weight (lb):		Ext. Static Pressure (Rated/Max) (inWg):	0.16 / 0.16

Submittal Data Sheet

1.5-Ton Slim Duct Built-in Concealed Ceiling Unit - CDXS18LVJU

Project: Luminato

Submitted by: Anne Charpentier of F W WEBB CO on 11/4/2016

Submitted to: No Engineer Name Specified

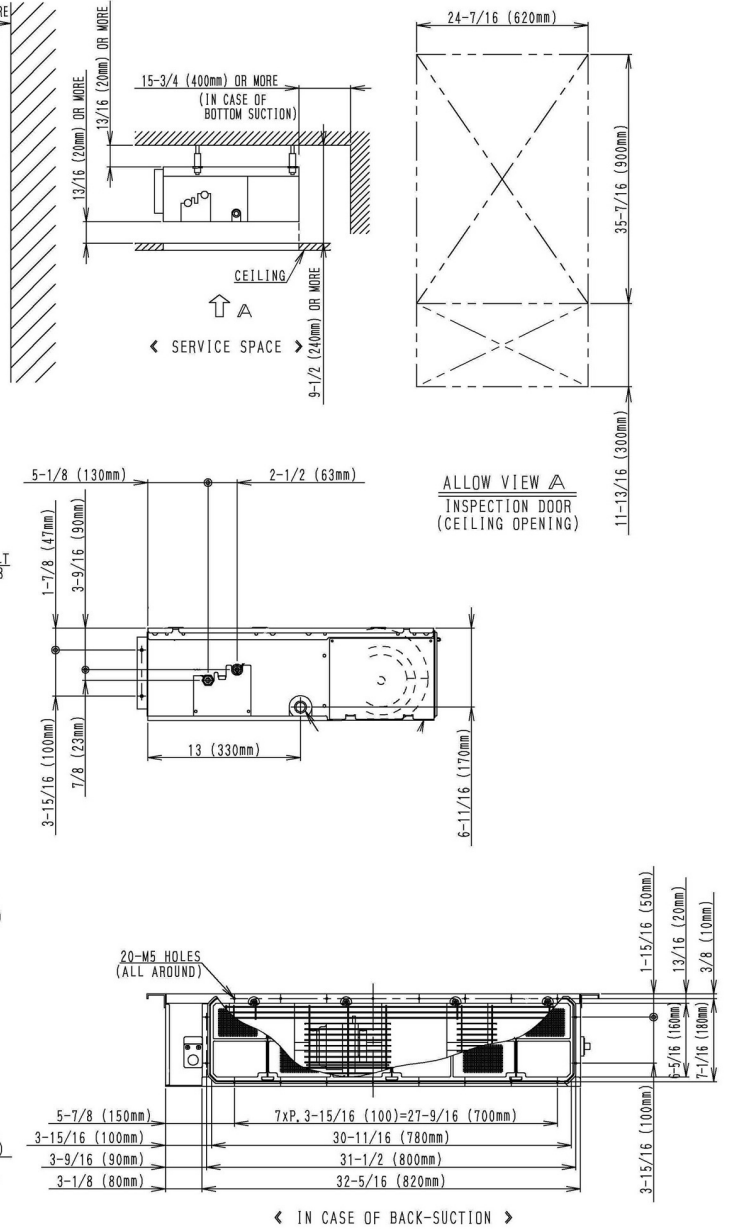
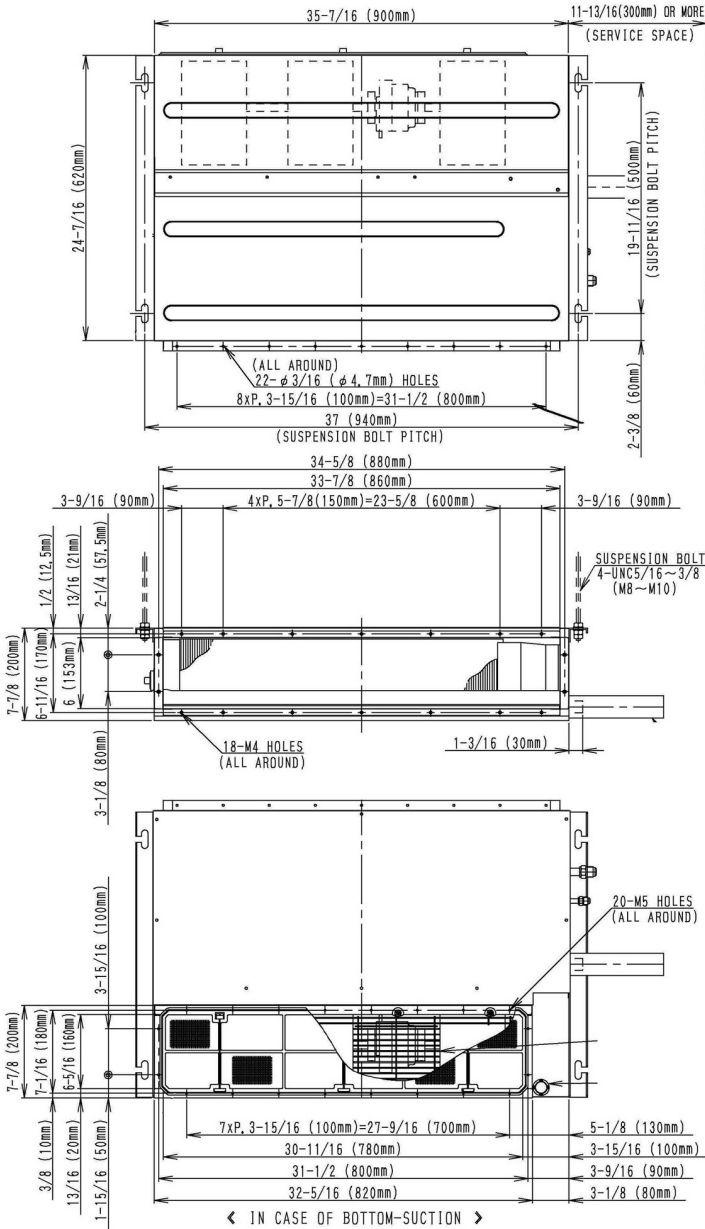
DIMENSIONAL DRAWING

Ductwork Opening:

Model No.	Supply Opening		Return Opening	
	Height	Width	Height	Width
CDXS15,18LVJU	6-11/16"	34-5/8"	7-1/16"	31-1/2"

(Note: Opening dimension base on Fixing Hole Center)

CDXS15_18LVJU





Submittal Data Sheet

2.0-Ton Slim Duct Built-in Concealed Ceiling Unit - CDXS24LVJU

Project: Luminato

Submitted by: Anne Charpentier of F W WEBB CO on 11/4/2016

Submitted to: No Engineer Name Specified

FEATURES

- Static capability up to 0.16" W.G.
- Rear or bottom return
- Econo Mode for increased energy savings
- LCD wireless remote with backlit display
- 12 year limited parts and compressor warranty with online registration
- IR controller included
- Air filter (prefilter)
- External Static Pressure .12inAq
- Hot start technology
- Auto-restart (after power failure)

BENEFITS

- Compact design
- Quiet operation
- 12 year limited parts and compressor warranty with online registration
- 5 Year limited parts warranty for commercial applications





Submittal Data Sheet

2.0-Ton Slim Duct Built-in Concealed Ceiling Unit - CDXS24LVJU

Project: Luminato

Submitted by: Anne Charpentier of F W WEBB CO on 11/4/2016

Submitted to: No Engineer Name Specified

PERFORMANCE

Indoor Unit Model No.	CDXS24LVJU	Indoor Unit Name:	2.0-Ton Slim Duct Built-in Concealed Ceiling Unit
Type:	Ducted	Rated Cooling Conditions:	Indoor (°F DB/WB): 80 / 67 Ambient (°F DB/WB): 95 / 75
Rated Cooling Capacity (Btu/hr):	24,000	Rated Heating Conditions:	Indoor (°F DB/WB): 70 / 60 Ambient (°F DB/WB): 47 / 43
Sensible Capacity (Btu/hr):		Rated Piping Length(ft):	
Cooling Input Power (kW):	0.160	Rated Height Separation (ft):	
Rated Heating Capacity (Btu/hr):	25,400		
Heating Input Power (kW):	0.16		

INDOOR UNIT DETAILS

Power Supply (V/Hz/Ph):	208-230 / 60 / 1	Airflow Rate (H/M/L/SL) (CFM):	565/523/477/395
Power Supply Connections:	See Outdoor Unit for Electrical Specs	Moisture Removal (Gal/hr):	23.2
Min. Circuit Amps MCA (A):		Gas Pipe Connection (inch):	5/8
Max Overcurrent Protection (MOP) (A):		Liquid Pipe Connection (inch):	1/4
Dimensions (HxWxD) (in):	7-7/8 x 43-5/16 x 24-7/16	Condensate Connection (inch):	25/32
Panel (HxWxD) (in):		Sound Pressure (H/M/L/SL) (dBA):	38/36/34/32
Net Weight (lb):	66	Sound Power Level (dBA):	
Panel Weight (lb):		Ext. Static Pressure (Rated/Max) (inWg):	0.16 / 0.16

Submittal Data Sheet

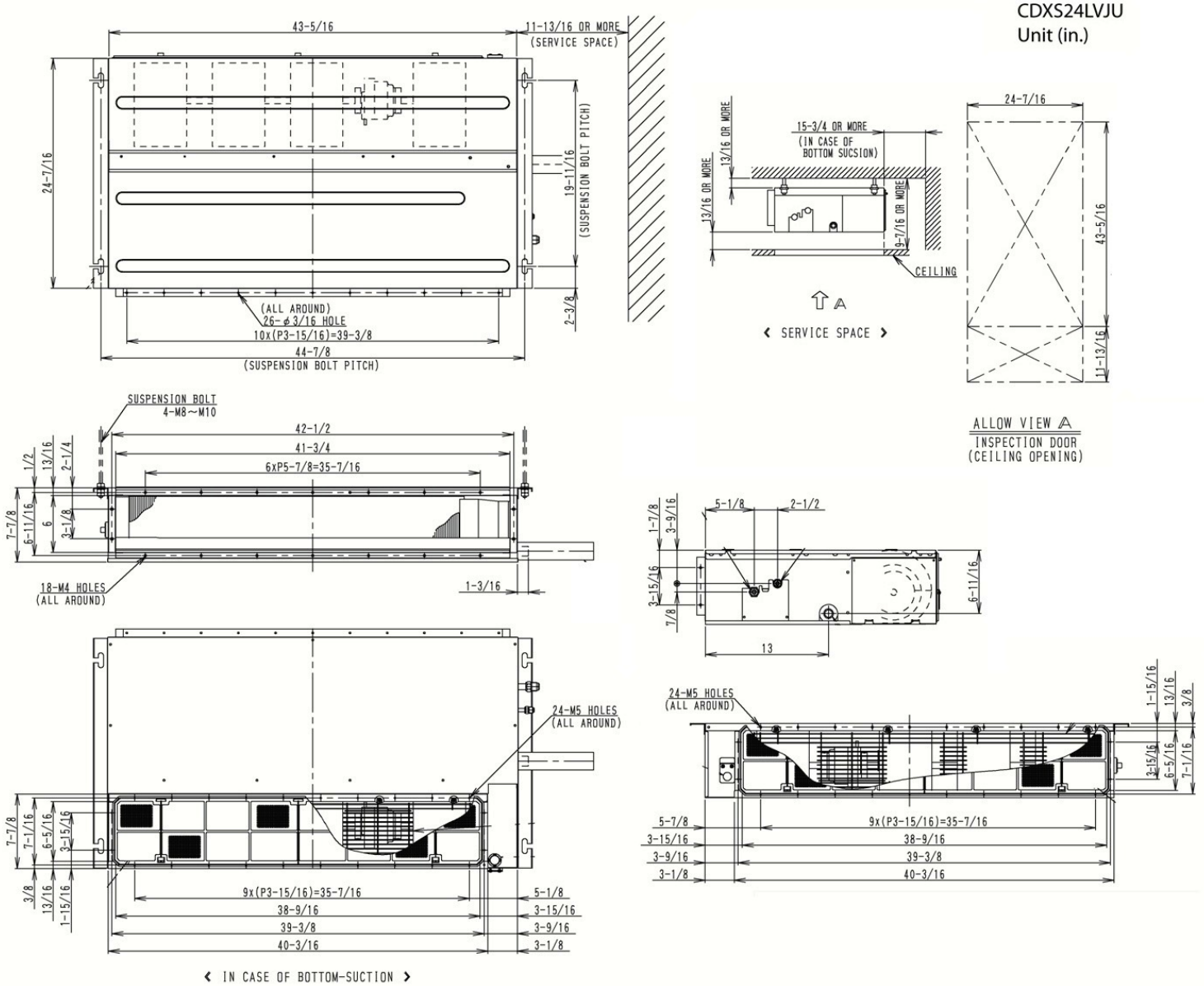
2.0-Ton Slim Duct Built-in Concealed Ceiling Unit - CDXS24LVJU

Project: Luminato

Submitted by: Anne Charpentier of F W WEBB CO on 11/4/2016

Submitted to: No Engineer Name Specified

DIMENSIONAL DRAWING





Submittal Data Sheet

FDXS09LVJU - FDXS09LVJU

Project: Luminato

Submitted by: Anne Charpentier of F W WEBB CO on 11/4/2016

Submitted to: No Engineer Name Specified

FEATURES

- Intelligent eye occupancy sensor
- Weekly timer for programmable comfort
- Low ambient heat operation down to 0° F
- Low ambient cooling kit available
- 12 year limited parts and compressor warranty with online registration
- IR controller included
- Air filter (prefilter)
- External Static Pressure .12inAq
- Hot start technology
- Auto-restart (after power failure)

BENEFITS

- Quiet operation
- Quiet operation
- 12 year limited parts and compressor warranty with online registration
- 5 Year limited parts warranty for commercial applications





Submittal Data Sheet

FDXS09LVJU - FDXS09LVJU

Project: Luminato

Submitted by: Anne Charpentier of F W WEBB CO on 11/4/2016

Submitted to: No Engineer Name Specified

PERFORMANCE

Indoor Unit Model No.	FDXS09LVJU	Indoor Unit Name:	FDXS09LVJU
Type:	Ducted	Rated Cooling Conditions:	Indoor (°F DB/WB): 80 / 67 Ambient (°F DB/WB): 95 / 75
Rated Cooling Capacity (Btu/hr):	9,000	Rated Heating Conditions:	Indoor (°F DB/WB): 70 / 60 Ambient (°F DB/WB): 47 / 43
Sensible Capacity (Btu/hr):		Rated Piping Length(ft):	
Cooling Input Power (kW):		Rated Height Separation (ft):	
Rated Heating Capacity (Btu/hr):	9,000		

INDOOR UNIT DETAILS

Power Supply (V/Hz/Ph):	208-230 / 60 / 1	Airflow Rate (H/M/L/SL) (CFM):	305/280/260/235
Power Supply Connections:	See Outdoor Unit for Electrical Specs	Moisture Removal (Gal/hr):	2.5
Min. Circuit Amps MCA (A):		Gas Pipe Connection (inch):	3/8
Max Overcurrent Protection (MOP) (A):		Liquid Pipe Connection (inch):	1/4
Dimensions (HxWxD) (in):	7-7/8 x 27-9/16 x 24-7/16	Condensate Connection (inch):	1-1/32
Panel (HxWxD) (in):		Sound Pressure (H/M/L) (dBA):	35/33/31
Net Weight (lb):	47	Sound Power Level (dBA):	51
Panel Weight (lb):		Ext. Static Pressure (Rated/Max) (inWg):	0.12 / 0.12

Submittal Data Sheet

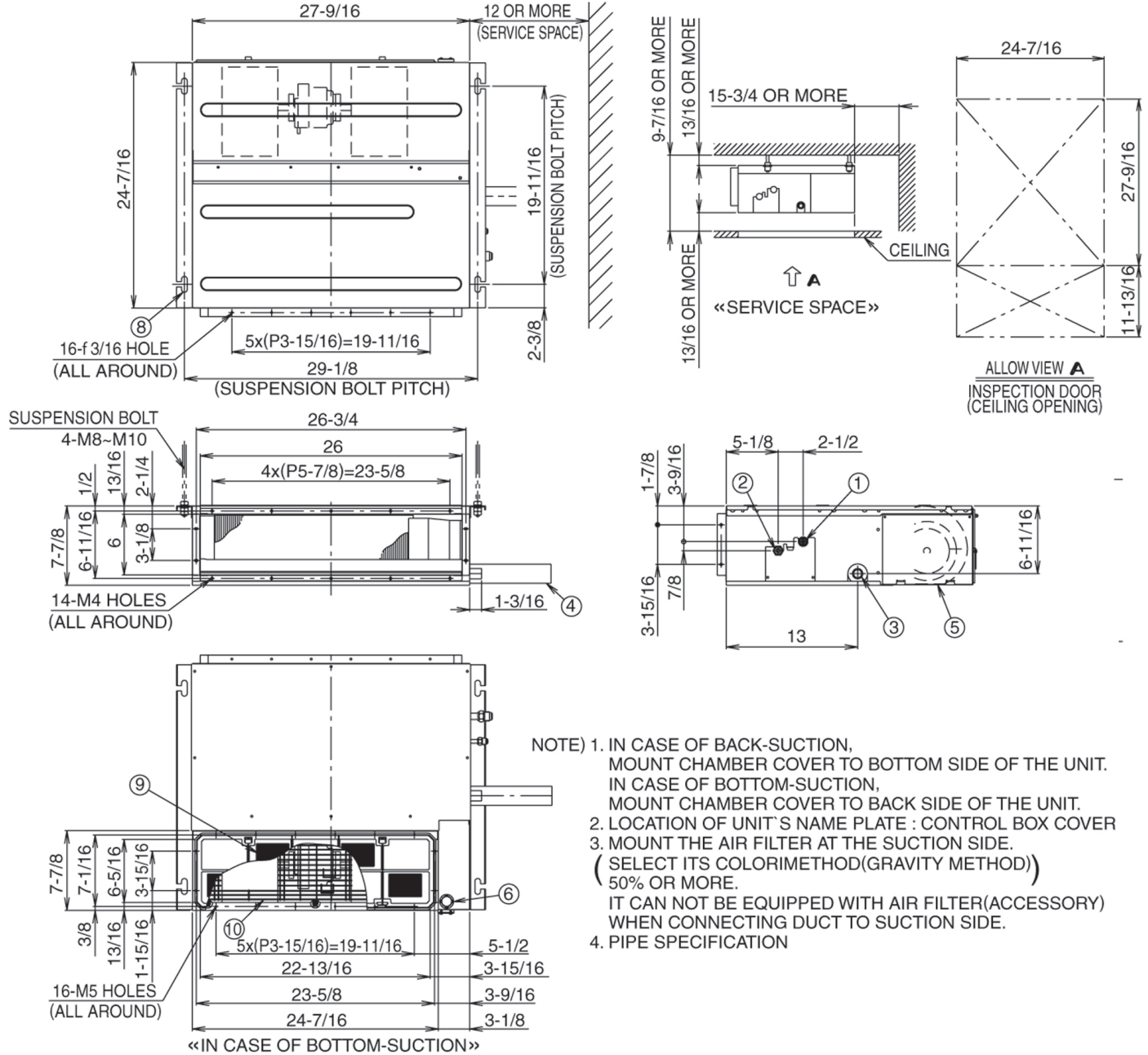
FDXS09LVJU - FDXS09LVJU

Project: Luminato

Submitted by: Anne Charpentier of F W WEBB CO on 11/4/2016

Submitted to: No Engineer Name Specified

DIMENSIONAL DRAWING





Submittal Data Sheet

FDXS12LVJU - FDXS12LVJU

Project: Luminato

Submitted by: Anne Charpentier of F W WEBB CO on 11/4/2016

Submitted to: No Engineer Name Specified

FEATURES

- Intelligent eye occupancy sensor
- Weekly timer for programmable comfort
- Low ambient heat operation down to 0° F
- Low ambient cooling kit available
- 12 year limited parts and compressor warranty with online registration
- IR controller included
- Air filter (prefilter)
- External Static Pressure .12inAq
- Hot start technology
- Auto-restart (after power failure)

BENEFITS

- Quiet operation
- Quiet operation
- 12 year limited parts and compressor warranty with online registration
- 5 Year limited parts warranty for commercial applications





Submittal Data Sheet

FDXS12LVJU - FDXS12LVJU

Project: Luminato

Submitted by: Anne Charpentier of F W WEBB CO on 11/4/2016

Submitted to: No Engineer Name Specified

PERFORMANCE

Indoor Unit Model No.	FDXS12LVJU	Indoor Unit Name:	FDXS12LVJU
Type:	Ducted	Rated Cooling Conditions:	Indoor (°F DB/WB): 80 / 67 Ambient (°F DB/WB): 95 / 75
Rated Cooling Capacity (Btu/hr):	12,000	Rated Heating Conditions:	Indoor (°F DB/WB): 70 / 60 Ambient (°F DB/WB): 47 / 43
Sensible Capacity (Btu/hr):		Rated Piping Length(ft):	
Cooling Input Power (kW):		Rated Height Separation (ft):	
Rated Heating Capacity (Btu/hr):	12,000		

INDOOR UNIT DETAILS

Power Supply (V/Hz/Ph):	208-230 / 60 / 1	Airflow Rate (H/M/L/SL) (CFM):	305/280/260/235
Power Supply Connections:	See Outdoor Unit for Electrical Specs	Moisture Removal (Gal/hr):	4.0
Min. Circuit Amps MCA (A):		Gas Pipe Connection (inch):	3/8
Max Overcurrent Protection (MOP) (A):		Liquid Pipe Connection (inch):	1/4
Dimensions (HxWxD) (in):	7-7/8 x 27-9/16 x 24-7/16	Condensate Connection (inch):	1-1/32
Panel (HxWxD) (in):		Sound Pressure (H/M/L) (dBA):	35/33/31
Net Weight (lb):	47	Sound Power Level (dBA):	51
Panel Weight (lb):		Ext. Static Pressure (Rated/Max) (inWg):	0.12 / 0.12

Submittal Data Sheet

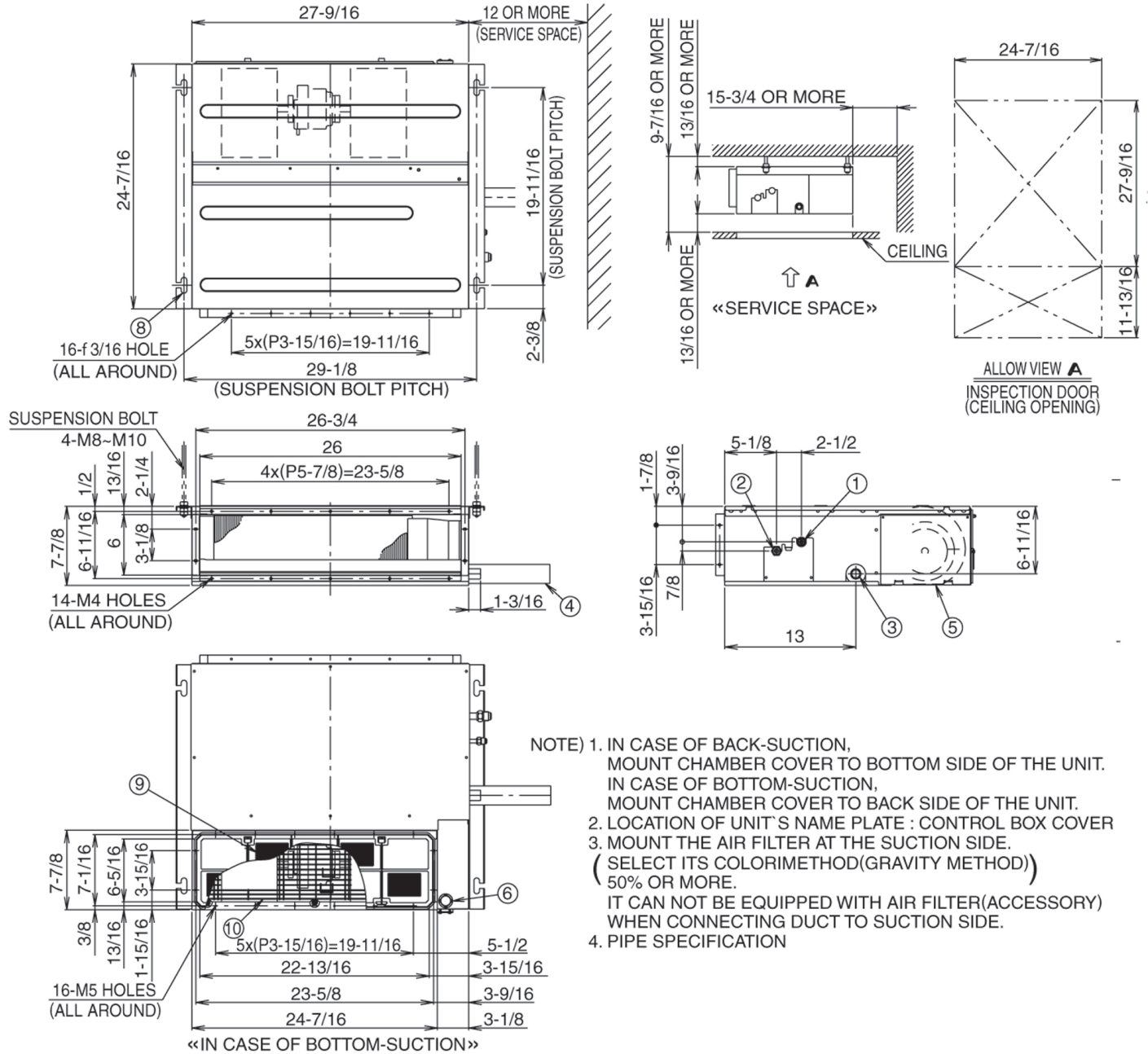
FDXS12LVJU - FDXS12LVJU

Project: Luminato

Submitted by: Anne Charpentier of F W WEBB CO on 11/4/2016

Submitted to: No Engineer Name Specified

DIMENSIONAL DRAWING





Submittal Data Sheet

FTXS09LVJU - FTXS09LVJU

Project: Luminato

Submitted by: Anne Charpentier of F W WEBB CO on 11/4/2016

Submitted to: No Engineer Name Specified

FEATURES

- IR controller included
- 3-D airflow - Auto-swing (up, down and right, left)
- Intelligent eye occupancy sensor
- Titanium apatite photocatalytic air purifying
- Hot start technology
- Auto-restart (after power failure)

BENEFITS

- 12 year limited parts and compressor warranty with online registration
- 5 Year limited parts warranty for commercial applications





Submittal Data Sheet

FTXS09LVJU - FTXS09LVJU

Project: Luminato

Submitted by: Anne Charpentier of F W WEBB CO on 11/4/2016

Submitted to: No Engineer Name Specified

PERFORMANCE

Indoor Unit Model No.	FTXS09LVJU	Indoor Unit Name:	FTXS09LVJU
Type:	Wall Mounted	Rated Cooling Conditions:	Indoor (°F DB/WB): 80 / 67 Ambient (°F DB/WB): 95 / 75
Rated Cooling Capacity (Btu/hr):	9,000	Rated Heating Conditions:	Indoor (°F DB/WB): 70 / 70 Ambient (°F DB/WB): 47 / 43
Sensible Capacity (Btu/hr):	8,100	Rated Piping Length(ft):	
Cooling Input Power (kW):	0.020	Rated Height Separation (ft):	
Rated Heating Capacity (Btu/hr):	9,000		
Heating Input Power (kW):	0.02		

INDOOR UNIT DETAILS

Power Supply (V/Hz/Ph):	208-230 / 60 / 1	Airflow Rate (H/M/L/SL) (CFM):	381/279/194/145
Power Supply Connections:	See Outdoor Unit for Electrical Specs	Moisture Removal (Gal/hr):	0.3
Min. Circuit Amps MCA (A):		Gas Pipe Connection (inch):	3/8
Max Overcurrent Protection (MOP) (A):		Liquid Pipe Connection (inch):	1/4
Dimensions (HxWxD) (in):	11-5/8 x 31-1/2 x 8-7/16	Condensate Connection (inch):	5/8
Panel (HxWxD) (in):		Sound Pressure (H/M/L/SL) (dBA):	41/33/25/22
Net Weight (lb):	20	Sound Power Level (dBA):	57
Panel Weight (lb):		Ext. Static Pressure (Rated/Max) (inWg):	0.00 / 0.00

Submittal Data Sheet

FTXS09LVJU - FTXS09LVJU

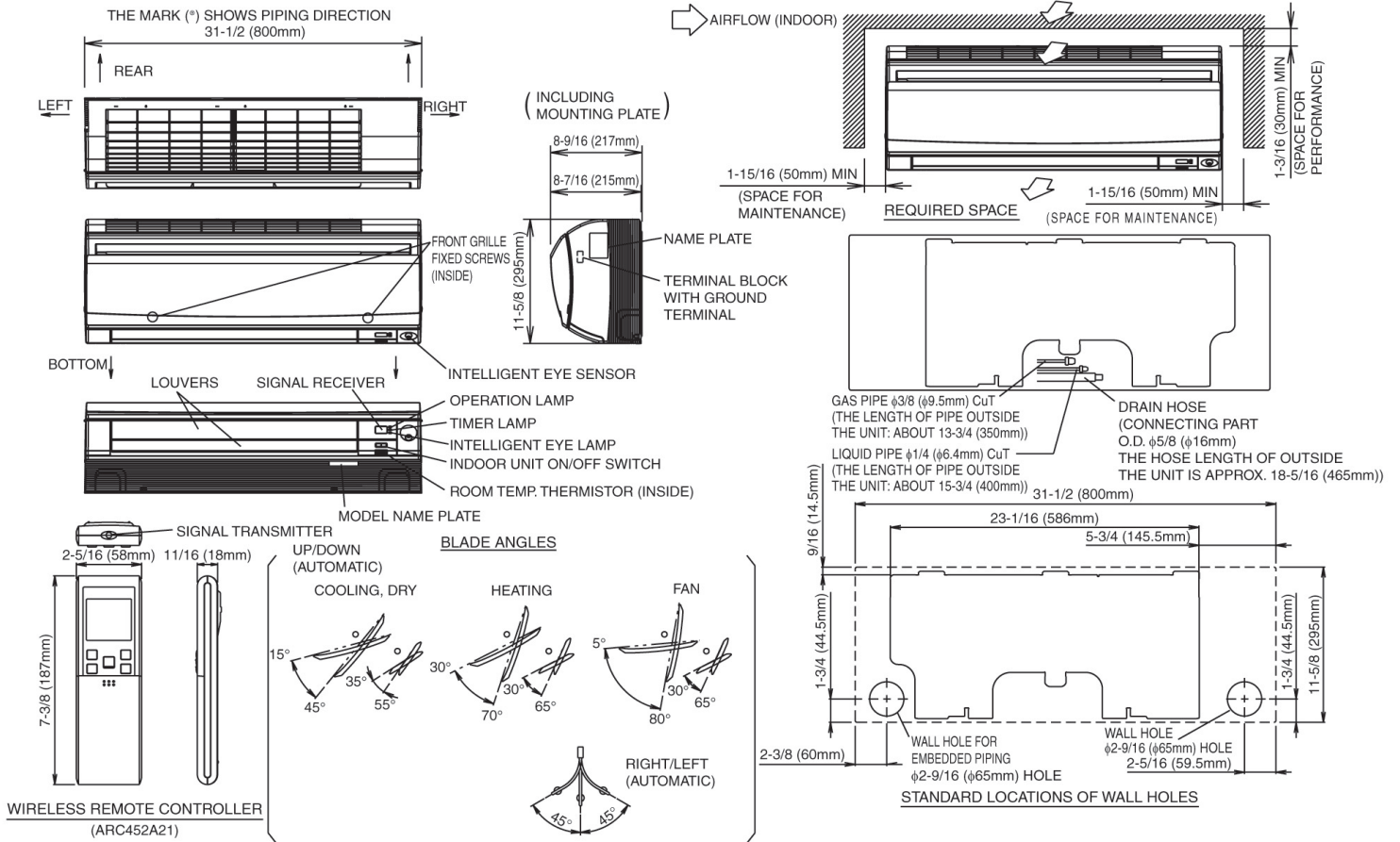
Project: Luminato

Submitted by: Anne Charpentier of F W WEBB CO on 11/4/2016

Submitted to: No Engineer Name Specified

DIMENSIONAL DRAWING

FTXS09,12LVJU





Submittal Data Sheet

FTXS15LVJU - FTXS15LVJU

Project: Luminato

Submitted by: Anne Charpentier of F W WEBB CO on 11/4/2016

Submitted to: No Engineer Name Specified

FEATURES

- Intelligent eye occupancy sensor
- Weekly timer for programmable comfort
- Low ambient heat operation down to 0° F
- Titanium apatite photocatalytic air purifying
- 12 year limited parts and compressor warranty with online registration
- IR controller included
- 3-D airflow - Auto-swing (up, down and right, left)
- Intelligent eye occupancy sensor
- Titanium apatite photocatalytic air purifying
- Hot start technology
- Auto-restart (after power failure)

BENEFITS

- Quiet operation
- 12 year limited parts and compressor warranty with online registration
- 5 Year limited parts warranty for commercial applications





Submittal Data Sheet

FTXS15LVJU - FTXS15LVJU

Project: Luminato

Submitted by: Anne Charpentier of F W WEBB CO on 11/4/2016

Submitted to: No Engineer Name Specified

PERFORMANCE

Indoor Unit Model No.	FTXS15LVJU	Indoor Unit Name:	FTXS15LVJU
Type:	Wall Mounted	Rated Cooling Conditions:	Indoor (°F DB/WB): 80 / 67 Ambient (°F DB/WB): 95 / 75
Rated Cooling Capacity (Btu/hr):	15,000	Rated Heating Conditions:	Indoor (°F DB/WB): 70 / 70 Ambient (°F DB/WB): 47 / 43
Sensible Capacity (Btu/hr):		Rated Piping Length(ft):	
Cooling Input Power (kW):	0.040	Rated Height Separation (ft):	
Rated Heating Capacity (Btu/hr):	15,000		
Heating Input Power (kW):	0.04		

INDOOR UNIT DETAILS

Power Supply (V/Hz/Ph):	208-230 / 60 / 1	Airflow Rate (H/M/L/SL) (CFM):	568/477/385/360
Power Supply Connections:	See Outdoor Unit for Electrical Specs	Moisture Removal (Gal/hr):	0.8
Min. Circuit Amps MCA (A):		Gas Pipe Connection (inch):	1/2
Max Overcurrent Protection (MOP) (A):		Liquid Pipe Connection (inch):	1/4
Dimensions (HxWxD) (in):	13-3/8 x 41-5/16 x 9-3/4	Condensate Connection (inch):	5/8
Panel (HxWxD) (in):		Sound Pressure (H/M/L/SL) (dBA):	45/40/35/32
Net Weight (lb):	31	Sound Power Level (dBA):	61
Panel Weight (lb):		Ext. Static Pressure (Rated/Max) (inWg):	0.00 / 0.00

Submittal Data Sheet

FTXS15LVJU - FTXS15LVJU

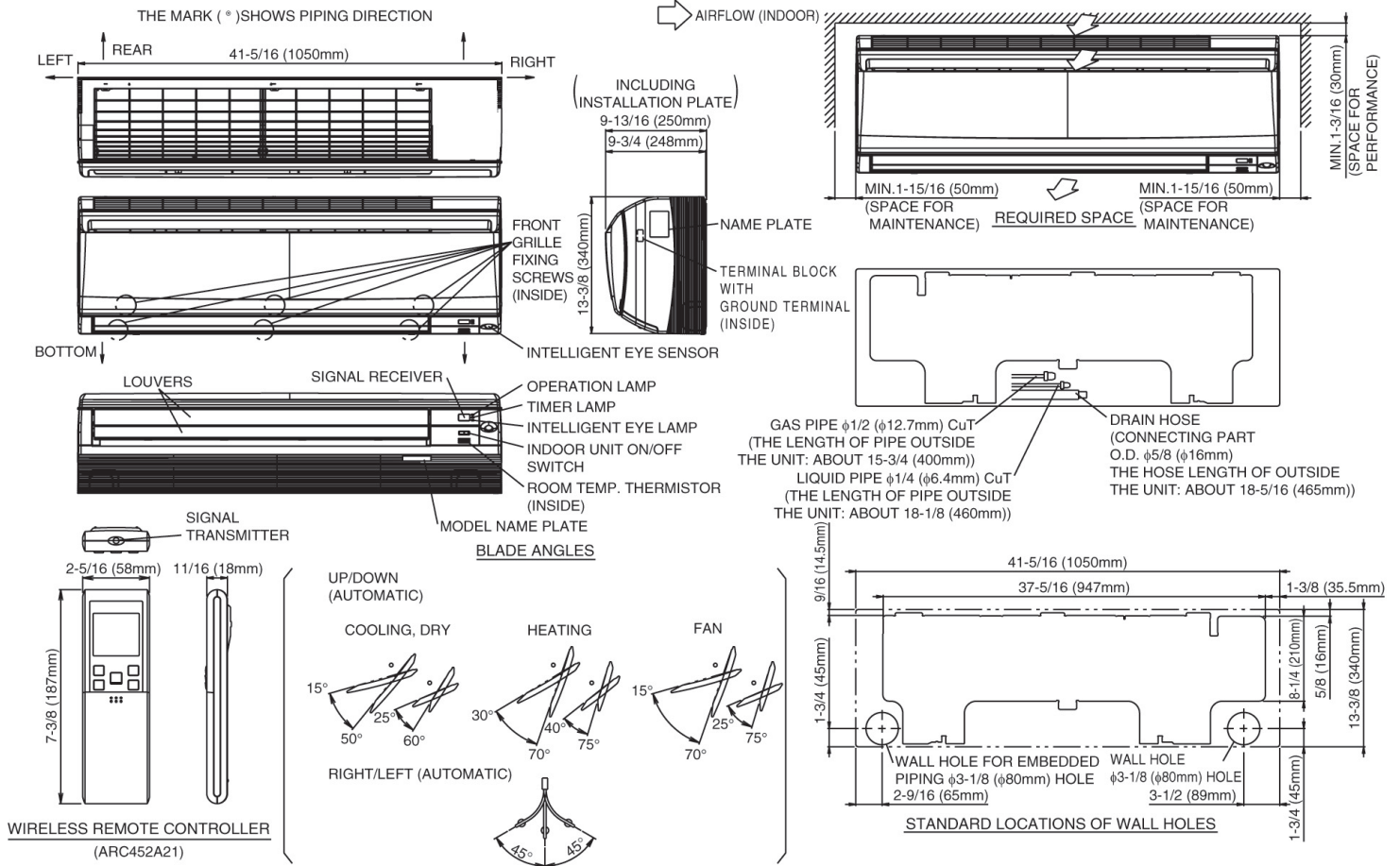
Project: Luminato

Submitted by: Anne Charpentier of F W WEBB CO on 11/4/2016

Submitted to: No Engineer Name Specified

DIMENSIONAL DRAWING

FTXS15,18_LVJU





Submittal Data Sheet

1.5-Ton DC Ducted Unit - FBQ18PVJURZQ18PVJU9

Project: Luminato

Submitted by: Anne Charpentier of F W WEBB CO on 11/4/2016

Submitted to: No Engineer Name Specified

FEATURES

- Medium external static pressure (ESP) capabilities up to 0.8â€ W.G.
- Three user selected fan speeds available plus fan "Auto" logic
- Built-in condensate pump
- Maximum piping length up to 164 ft. allows flexible placement of indoor unit
- Maximum piping height separation up to 98 ft.
- 10 year limited parts and compressor warranty

INDOOR UNIT



BENEFITS

- DC fan motor provides improved efficiency
- Bottom access for easy service
- Low ambient cooling operation down to 0°F (with optional wind baffle(s))

OUTDOOR UNIT





Submittal Data Sheet

1.5-Ton DC Ducted Unit - FBQ18PVJURZQ18PVJU9

Project: Luminato

Submitted by: Anne Charpentier of F W WEBB CO on 11/4/2016

Submitted to: No Engineer Name Specified

SYSTEM PERFORMANCE

Indoor Unit Model No.	FBQ18PVJU	Indoor Unit Name:	SKYAIR DC DUCTED
Outdoor Unit Model No.	RZQ18PVJU9	Outdoor Unit Name:	1.5-Ton SkyAir Heat Pump
Rated Cooling Capacity (Btu/hr):	18,000	Rated Cooling Conditions:	Indoor (°F DB/WB): 80 / 67 Ambient (°F DB/WB): 95 / 75
Sensible Capacity (Btu/hr):	14,800	Rated Piping Length(ft):	25
Max/Min Cooling Capacity (Btu/hr):	18,000 /	Rated Height Difference (ft):	98.00
Cooling Input Power (kW):	2.120	Rated Heating Conditions:	Indoor (°F DB/WB): 70 / 70 Ambient (°F DB/WB): 47 / 43
SEER (Non-Ducted/Ducted):	17.50 /	HSPF (Non-Ducted/Ducted):	10.6 /
EER (Non-Ducted/Ducted):	14.10 /		
Rated Heating Capacity (Btu/hr):	20,000		
Max/Min Heating Capacity (Btu/hr):	/ 20,000		
Heating Input Power (kW):	2.12		

SYSTEM DETAILS

Refrigerant Type:	R-410A	Cooling Operation Range (°F DB):	23 - 115
Holding Refrigerant Charge (lbs):	5.1	Heating Operation Range (°F WB):	0 - 77
Additional Charge (lb/ft):	0.04	Max. Pipe Length (Vertical) (ft):	98
Pre-charge Piping (Length) (ft):	0	Cooling Range w/Baffle (°F DB):	0 - 115
Max. Pipe Length (Total) (ft):	164	Heating Range w/Baffle (°F WB):	0 - 77
Max Height Separation (Ind to Ind ft):	98		



Submittal Data Sheet

1.5-Ton DC Ducted Unit - FBQ18PVJURZQ18PVJU9

Project: Luminato

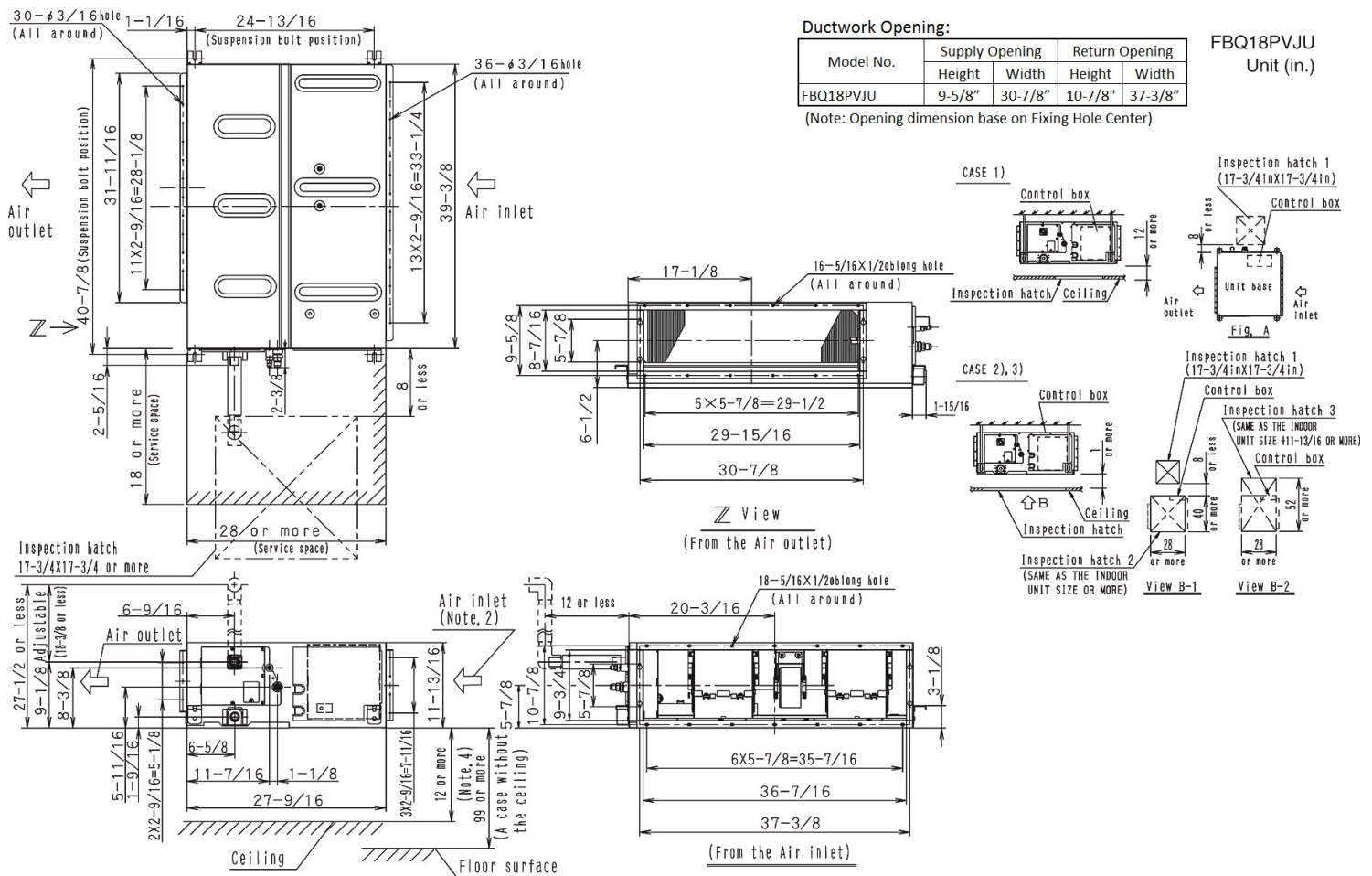
Submitted by: Anne Charpentier of F W WEBB CO on 11/4/2016

Submitted to: No Engineer Name Specified

INDOOR UNIT DETAILS

Power Supply (V/Hz/Ph):	208-230 / 60 / 1	Airflow Rate (H/M/L) (CFM):	635/582/529
Power Supply Connections:	L1, L2, Ground	Moisture Removal (Gal/hr):	
Min. Circuit Amps MCA (A):	1.60	Gas Pipe Connection (inch):	1/2
Max Overcurrent Protection (MOP) (A):	15.00	Liquid Pipe Connection (inch):	1/4
Dimensions (HxWxD) (in):	11-13/16 x 39-3/8 x 27-9/16	Condensate Connection (inch):	1
Panel (HxWxD) (in):		Sound Pressure (H/M) (dBA):	41/39
Net Weight (lb):	80	Sound Power Level (dBA):	
Panel Weight (lb):		Ext. Static Pressure (Rated/Max) (inWg):	0.80 / 0.80

DIMENSIONAL DRAWING - INDOOR UNIT



Daikin North America LLC, 5151 San Felipe, Suite 500, Houston, TX, 77056

Daikin City Generated Submittal Data

www.daikinac.com www.daikincomfort.com

(Daikin's products are subject to continuous improvements. Daikin reserves the right to modify product design, specifications and information in this data sheet without notice and without incurring any obligations)

