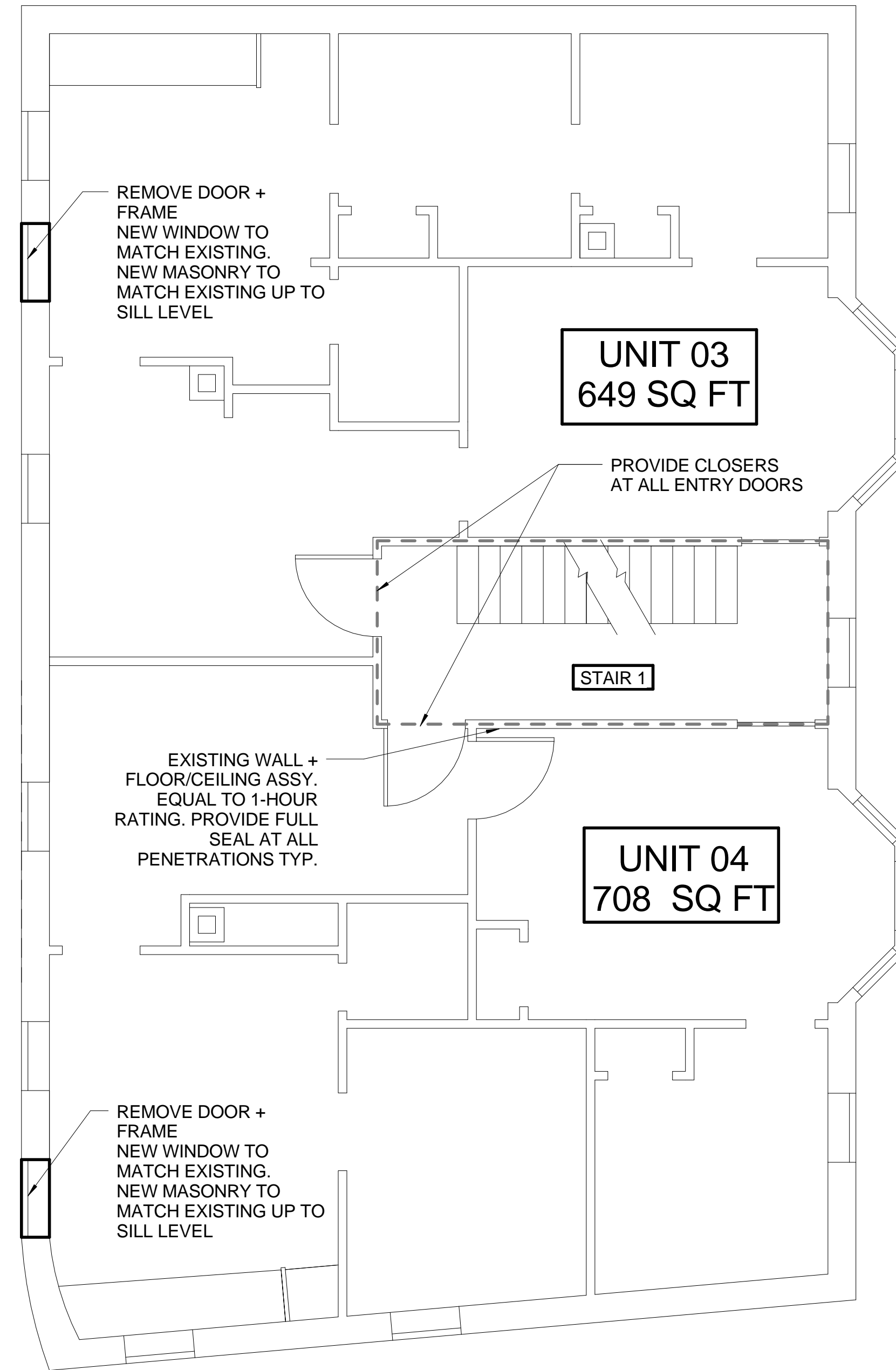


2ND FLOOR GROSS SQUARE FOOTAGE: 1680SQ FT

1 | SECOND FLOOR - DEMO
1/4" = 1'-0"



2ND FLOOR GROSS SQUARE FOOTAGE: 1680 SQ FT

2 | SECOND FLOOR - NEW
1/4" = 1'-0"

NOTES:

- SPRINKLE IN ACCORDANCE WITH NFPA 13R
- EXISTING APT. DOORS MUST MEET REQUIREMENTS OF 1 3/4" THICK SOLID WOOD, WITH 3/4" FRAME
- IF EXIST. DOORS DO NOT MEET THIS, PROVIDE 20 MIN RATED DOORS + FRAMES, WITH CLOSERS + SELF-LATCHING HARDWARE

Prepared For:

Consultant:

Architect:
ARCHETYPE architects
48 Union Wharf Portland, Maine 04101
(207) 772-6022 ARCHETYPE@ARCHETYPEA.COM

Project:
96 FEDERAL STREET
APARTMENTS
96 Federal Street
Portland, ME

Revisions:

Date:
21 JULY 15

Scale:
1/4" = 1'-0"

SECOND FLOOR PLAN
DEMO AND NEW WORK

A1.02