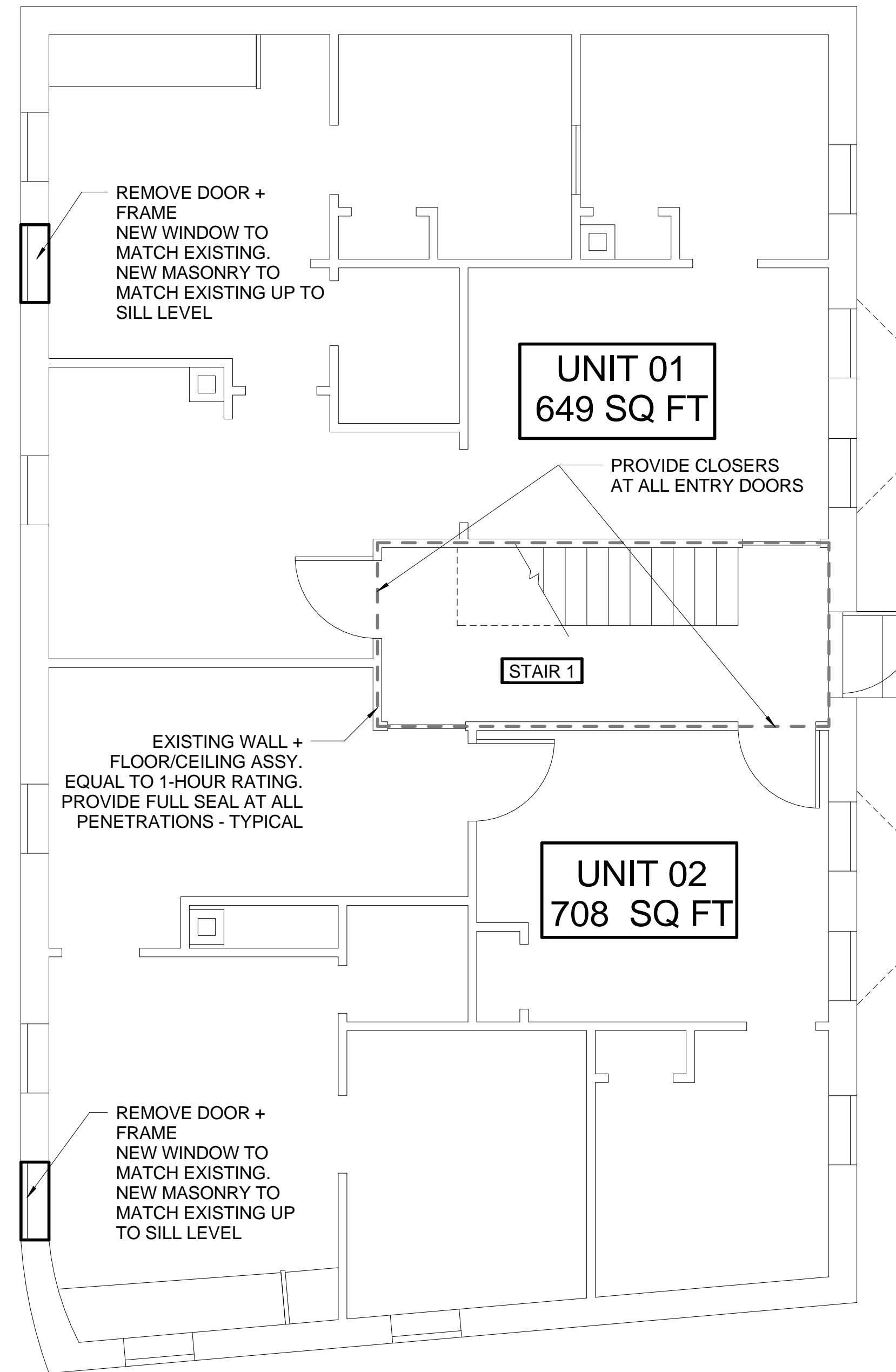


1ST FLOOR GROSS SQUARE FOOTAGE: 1656 SQ FT

1 | FIRST FLOOR- DEMO
1/4" = 1'-0"



1ST FLOOR GROSS SQUARE FOOTAGE: 1656 SQ FT

2 | FIRST FLOOR - NEW
1/4" = 1'-0"

RELEVANT CODES

INTERNATIONAL EXISTING BUILDING CODE - 2009	REFERENCE
OCCUPANCY R-2 (RESIDENTIAL) ALTERATION LEVEL 2	310 404
SINGLE EXIT ACCEPTABLE IN BUILDINGS IN GROUP R-2 OF ANY HEIGHT WITH NOT MORE THAN FOUR DWELLING UNITS PER FLOOR; WITH A SMOKEPROOF ENCLOSURE AS AN EXIT, WITH SUCH EXIT LOCATED WITHIN 20 FT. OF TRAVEL TO THE ENTRANCE DOORS TO ALL DWELLING UNITS.	705.3.1.1 (9)
EXISTING PLASTER AND LATH ON WOOD STUDS PROVIDES 1-HOUR RATING	1103.7
INTERNATIONAL BUILDING CODE - 2009 (MUBEC)	REFERENCE
OCCUPANCY R-2 (RESIDENTIAL) CONSTRUCTION TYPE 5B SPRINKLED W/NFPA 13R ALLOWABLE AREA - 7,000 SQ.FT. (TABULAR AREA WITHOUT SPRINKLER INCREASE) PROPOSED (EXISTING) FLOOR AREA (1,656 SQ.FT.) ALLOWABLE HEIGHT (3) STORIES (TABULAR HGT. PLUS SPRINKLER INCREASE) PROPOSED/EXISTING HEIGHT (3) STORIES	310 T601 903.0.1.1 T503 T503 504.2
FIRE RESISTANCE RATING: FIRE RESISTANCE RATING STRUCTURAL FRAME (0 HOUR) FIRE RESISTANCE RATING BEARING WALLS (0 HOUR) FIRE RESISTANCE RATING NON-BEARING WALLS AND PARTITIONS (0 HOUR) FIRE RESISTANCE RATING FLOOR CONSTRUCTION (0 HOUR) FIRE RESISTANCE RATING ROOF CONSTRUCTION (0 HOUR) EXIT STAIRS - 1 HOURS SHAFT ENCLOSURES: 1 HOUR (3 STORIES OR LESS)	T601 T601 T601 T601 T601 1022.1 708.4
FIRE PARTITIONS CORRIDOR FIRE PARTITIONS: 1/2 HOUR CORRIDOR DOORS: 33 HOUR IN 1-HOUR WALL CORRIDOR DOORS TO HAVE SMOKE CONTROL DWELLING/GUEST ROOM SEPARATION: 1 HOUR	T1018.1 T715.4 715.4.3.1 709.3 (EX1)
FIRE PROTECTION NFPA 13R SPRINKLER SYSTEM	903.3.1.2
MEANS OF EGRESS SINGLE MEANS OF EGRESS IN GROUP R-2 WHERE THE BUILDING IS SPRINKLED IN ACCORDANCE WITH 903.3.1.2	1015.1 (1)
NFPA 101 LIFE SAFETY - 2009 OCCUPANCY R-2 (RESIDENTIAL) SECONDARY MEANS OF ESCAPE NOT REQD WHEN SPRINKLED SPRINKLED WITH NFPA 13R MEANS OF ESCAPE SHALL COMPLY WITH SECTION 24.2 (SEE ABOVE) EXIT STAIR DOORS FROM UNITS INTO STAIRWELL SHALL BE 1-3/4" THICK, SOLID BONDED WOOD CORE DOORS THAT ARE SELF-CLOSING AND SELF-LATCHING WITH SOLID WOOD, 3/4" FRAMES. AREA OF REFUGE NOT REQD SINGLE EXIT WHERE BUILDING IS NOT MORE THAN 3 STORIES IN HGT. EXISTING STAIRS: MIN. WIDTH CLEAR: 36 INCHES MAX. HEIGHT OF RISER: 8 INCH MIN. TREAD DEPTH: 9 INCH MIN. HEADROOM: 6 FT. 8 IN. MAX. HEIGHT BETWEEN LANDINGS: 12 FT. EXISTING HANDRAILS NOT < 30 IN. AND NOT > 38IN.	310 24.2.2.1.2 (EX. 1) 24.3.5.2 31.2.1.2 31.2.2.1.3 31.2.2.1.2 31.2.4.4 T7.2.2.2.1.1(b) 7.2.2.4.2

NOTES:

- SPRINKLE IN ACCORDANCE WITH NFPA 13R
- EXISTING APT. DOORS MUST MEET REQUIREMENTS OF 1 3/4" THICK SOLID WOOD, WITH 3/4" FRAME
- IF EXIST. DOORS DO NOT MEET THIS, PROVIDE 20 MIN RATED DOORS + FRAMES, WITH CLOSERS + SELF-LATCHING HARDWARE

Prepared For:

Consultant:

Architect:

Project:

Revisions:

Scale:

Date:

ARCHETYPE
architects
48 Union Wharf Portland, Maine 04101
(207) 772-6022 ARCHETYPE@ARCHETYPEA.COM

96 FEDERAL STREET
APARTMENTS
Portland, ME

21 JULY 15
FIRST FLOOR PLAN
DEMO AND NEW WORK

A1.01