

Gas Condensing Technology
VITODENS® 200-W, B2HB

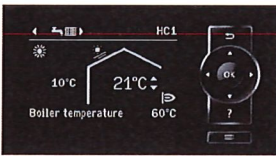
VIESSMANN
climate of innovation



Gas Condensing Technology



The Vitodens 200 is ENERGY STAR® qualified. By choosing the Vitodens 200, you are helping to promote cleaner air and a healthier environment.



Vitotronic 200 control with graphic user interface

Vitodens 200-W, B2HB – 12 to 199 MBH

Multi-boiler installation – 32 to 1592 MBH (for models 45 and 57)

Gas-fired condensing technology for outstanding performance, reliability and comfort

Intelligent combustion control

The new Vitodens 200, B2HB is optimized for maximum performance with the intelligent Lambda Pro combustion management system, which adapts combustion to changing gas qualities and operating conditions automatically. This unique function becomes increasingly important as gas supplies vary in quality and heating value.

Efficient by design

At the core of the new Vitodens 200, B2HB are the Viessmann stainless steel Inox-Radial heat exchanger and MatriX cylinder burner. Together, they allow the greatest amount of heat extraction to be achieved with minimal loss (see diagram for more information).

Award winning control unit

The intuitive Viessmann-made Vitotronic 200, HO1B control manages the entire heating system and ensures economical performance

and maximum comfort at all times. The user-friendly, menu-driven control is capable of displaying multi-line text and graphics on a backlit display. The high-contrast, monochrome display offers excellent readability under poor lighting conditions.

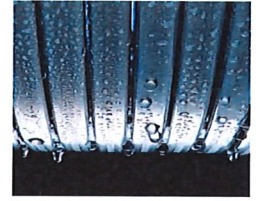
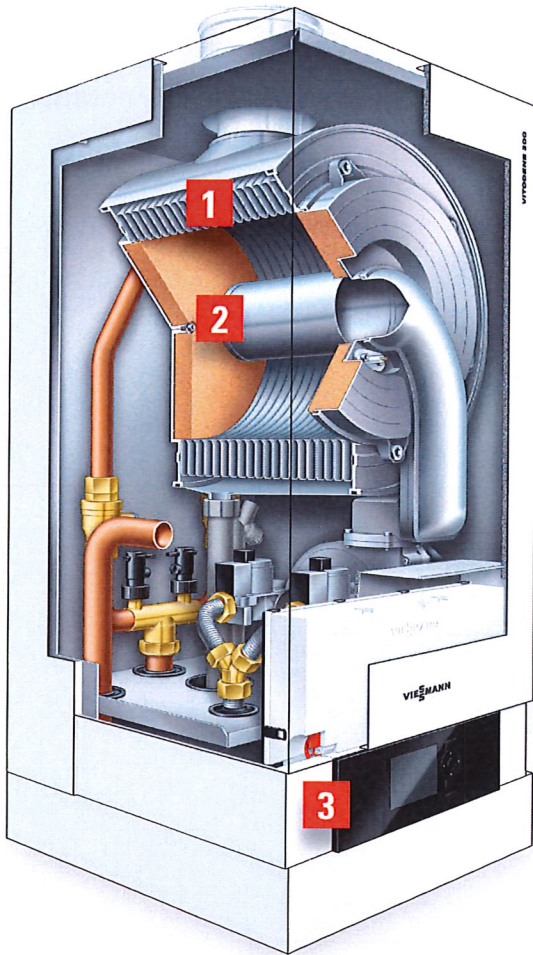
The outdoor reset function automatically adapts the boiler operating temperature to the changing outdoor temperature. This reduces fuel consumption up to 15%, giving you excellent returns year after year on a modest initial investment. Plus, with system control for multiple zone space and DHW heating, the Vitotronic 200, HO1B offers even greater heating flexibility without additional external controls.

Your environmental choice

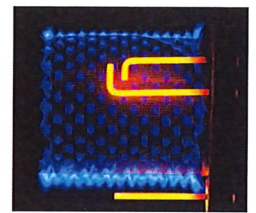
The Vitodens 200 is your efficient and environmentally-friendly choice for all applications. The low-emission MatriX cylinder burner guarantees clean, low-NOx combustion, while Lambda Pro ensures the highest efficiency at all times. With the Vitodens 200 you can actively contribute to protecting the environment – and your wallet – without compromising your warmth and comfort.



Product not exactly as illustrated.



Stainless steel Inox-Radial heat exchanger



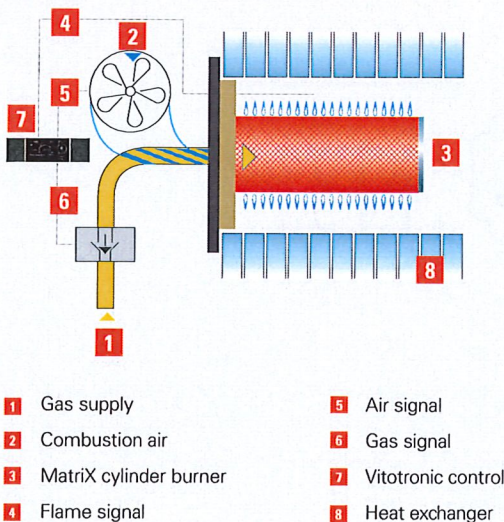
Low-emission, Viessmann-made Matrix cylinder burner

- 1 Inox-Radial heat exchanger
- 2 Modulating Matrix cylinder burner
- 3 Vitotronic 200 control with graphic user interface

Product may not be exactly as shown.

What is Lambda Pro?

By continuously monitoring the flame quality of the Matrix cylinder burner, the Lambda Pro combustion management system automatically adjusts the gas and combustion air ratio. Without any manual adjustments or conversions, the Vitodens 200, B2HB always maintains optimal performance.



Specifications

- Viessmann-made SA240 316 Ti stainless steel Inox-Radial heat exchanger constructed to CSA B51 and ASME Section IV
- Viessmann-made stainless steel Matrix cylinder burner
- 5 models from 12 to 199 MBH
- Efficiency up to 98% at full modulation and 95% AFUE
- Suitable for altitude levels up to 10,000 ft. / 3,000 m

For technical data, see back page.

Benefits at a glance

- Best value in its class with new industry-leading technology and the most standard features
- Low-emission combustion for environmentally-friendly operation
- Intelligent Lambda Pro gas management system automatically adjusts to different gas qualities for optimum efficiency and performance
- Vitotronic 200 control features large display with text and graphics for user-friendly operation
- Modulation ratio up to 6.5:1 ensures extremely high efficiency
- Multiple venting options and greater venting flexibility with vent length up to 180 ft.
- Multiple boiler installation for models 45 and 57 - 32 to 1592 MBH

Technical Data



Vitodens 200-W, B2HB gas-fired wall-mounted condensing boiler
Multi-boiler installation - 32 to 1592 MBH for models 45 and 57



| | | B2HB | | | | |
|---------------------|--------|-------|-------|--------|--------|--------|
| Model | | 19 | 26 | 35 | 45 | 57 |
| Rated Input* | MBH | 12-68 | 19-94 | 19-125 | 32-160 | 32-199 |
| Efficiency | % AFUE | 95% | 95% | 95% | 95% | 95% |
| Dimension | | | | | | |
| Width | in. | 17.75 | 17.75 | 17.75 | 19 | 19 |
| Height | in. | 41 | 41 | 41 | 43.5 | 43.5 |
| Depth | in. | 15.7 | 15.7 | 15.7 | 21 | 21 |
| Weight | lbs | 110 | 110 | 110 | 210 | 210 |

* Input based on natural gas



Energy Verified



NSF/ANSI 372

