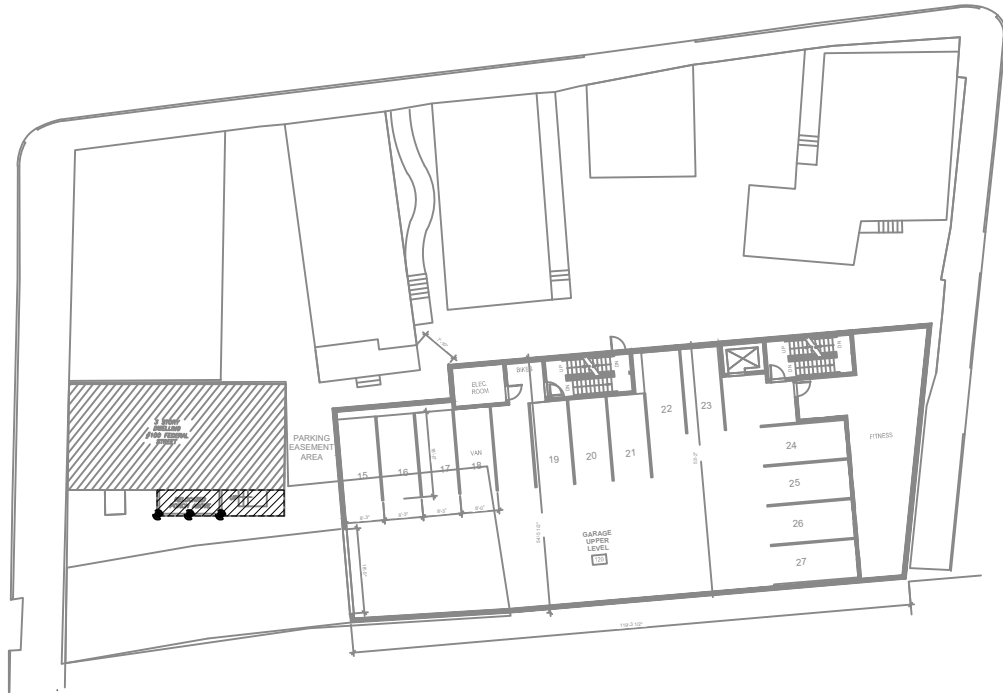
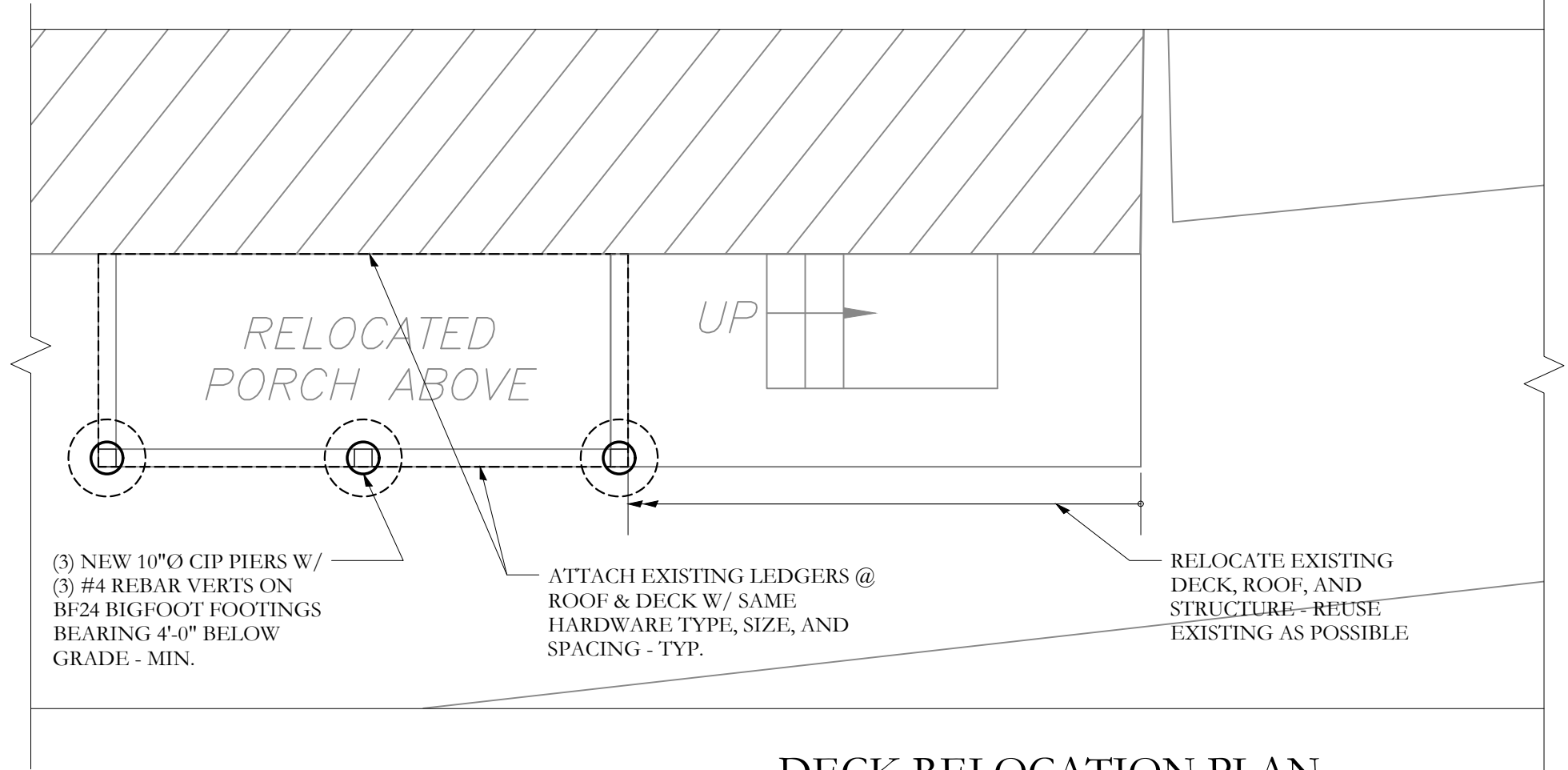


**CONCRETE AND REINFORCEMENT:**

- \* Concrete shall conform to applicable provisions of ACI-301 and 318.  
Minimum 28 day compressive strength (F'c)  
as follows:  
Footings :           3,000       psi
- \* Cement Type: I/II
- \* Deformed reinforcement: ASTM A615 grade 60, except bars specified to be field-bent, stirrups, and ties which shall be grade 40.
- \* Reinforcement shall be fabricated and placed per ACI Manual of Standard Practice (ACI-315). At splices, lap bars 50 diameters unless noted otherwise.
- \* Concrete cover over reinforcing: 1 1/2" for concrete placed against forms; 3" for concrete placed against earth. See also drawings.
- \* In continuous members, splice top bars at mid span and bottom bars over supports.
- \* Keep reinforcement clean and free of dirt, oil, and scale. Oil forms prior to placing reinforcement.



**KEY PLAN**  
N.T.S.



**DECK RELOCATION PLAN**  
SCALE: 1/4" = 1'-0"

**S1**

Date:  
01/04/2016

Scale:  
As indicated

PLAN

Project:  
**LUMINATO**  
Deck Relocation

Portland, Maine

Architect:  
**ARCHETYPE**  
architects  
48 Union Wharf Portland, Maine 04101  
(207) 772-6022 ARCHETYPE@ARCHETYPEPA.COM

**Structural Integrity**  
Consulting Engineers

77 Oak Street  
Portland, ME, 04101  
p. 207-774-4614  
f. 866-793-7835  
www.structuralinteg.com  
BUILD WITH CONFIDENCE  
© 2015 Aaron C. Jones, P.E.

SI# 15-0263



01/04/16