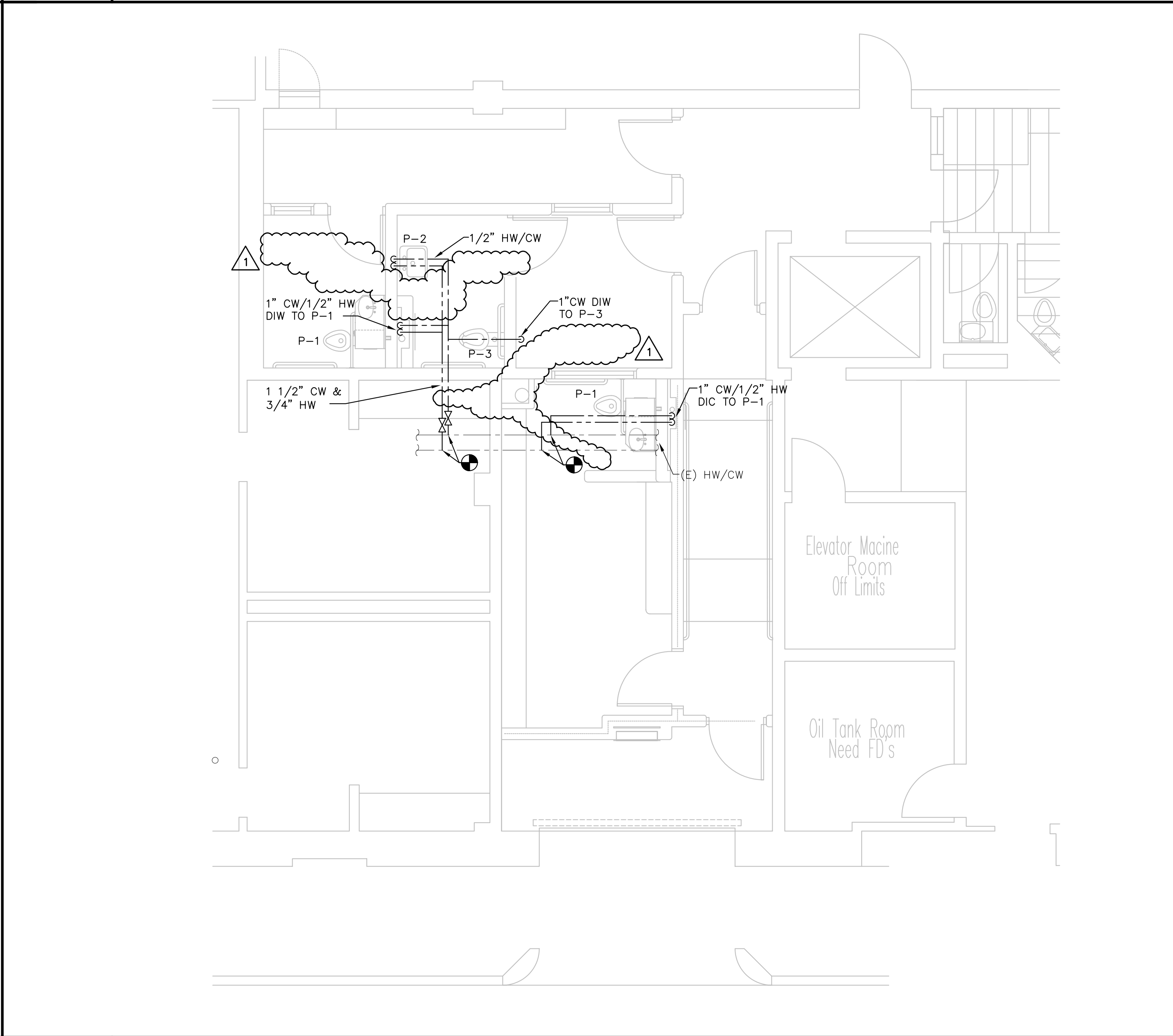
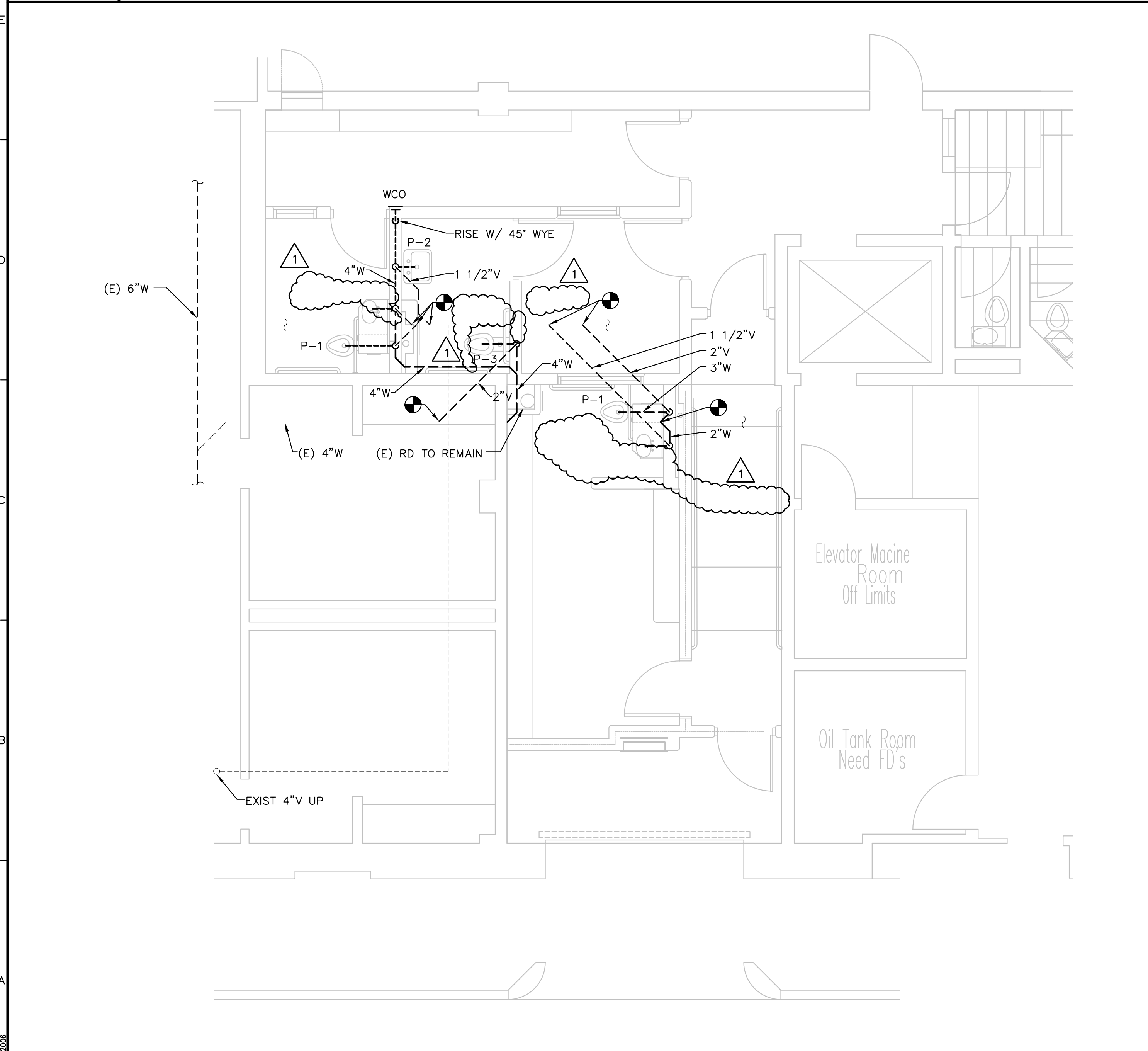


1 REMOVE EXISTING PLUMBING FIXTURE COMPLETE. REMOVE WASTE TO BELOW FINISHED FLOOR AND CAP. REMOVE VENT, DOMESTIC COLD, AND DOMESTIC HOT WATER PIPING BACK TO MAIN AND CAP. FOR PIPE MAINS ABOVE CEILINGS OR WITHIN WALLS (NOT SCHEDULED FOR DEMOLITION) BRANCH MAY BE CAPPED BEYOND FINISHED SURFACE.

E1 PLUMBING KEYPLAN  
1/16" = 1'-0"

E6 PLUMBING DEMOLITION PLAN  
1/4" = 1'-0"



A1 WASTE & VENT PIPING PLAN  
1/4" = 1'-0"

A6 DOMESTIC WATER PIPING PLAN  
1/4" = 1'-0"

Winton Scott Architects  
Portland, ME

**allied**  
engineering, inc.  
One Westbrook Commons  
Westbrook, Maine 04092-2804  
Telephone: 207-854-8126  
Fax: 207-854-0603

REVISIONS	
NUMBER	DESCRIPTION

Scale: As Noted  
Date: 10-04-2005  
Drawn By: VAG  
Checked By: ASD  
Project Mgr: WPF  
Project No: 04084  
Cad File: 04084P.DWG  
Print Scale: 1 - 1

PLUMBING DEMOLITION AND PLUMBING PLANS  
DETENTION AREA RENOVATIONS  
CUMBERLAND COUNTY COURTHOUSE  
PORTLAND, MAINE