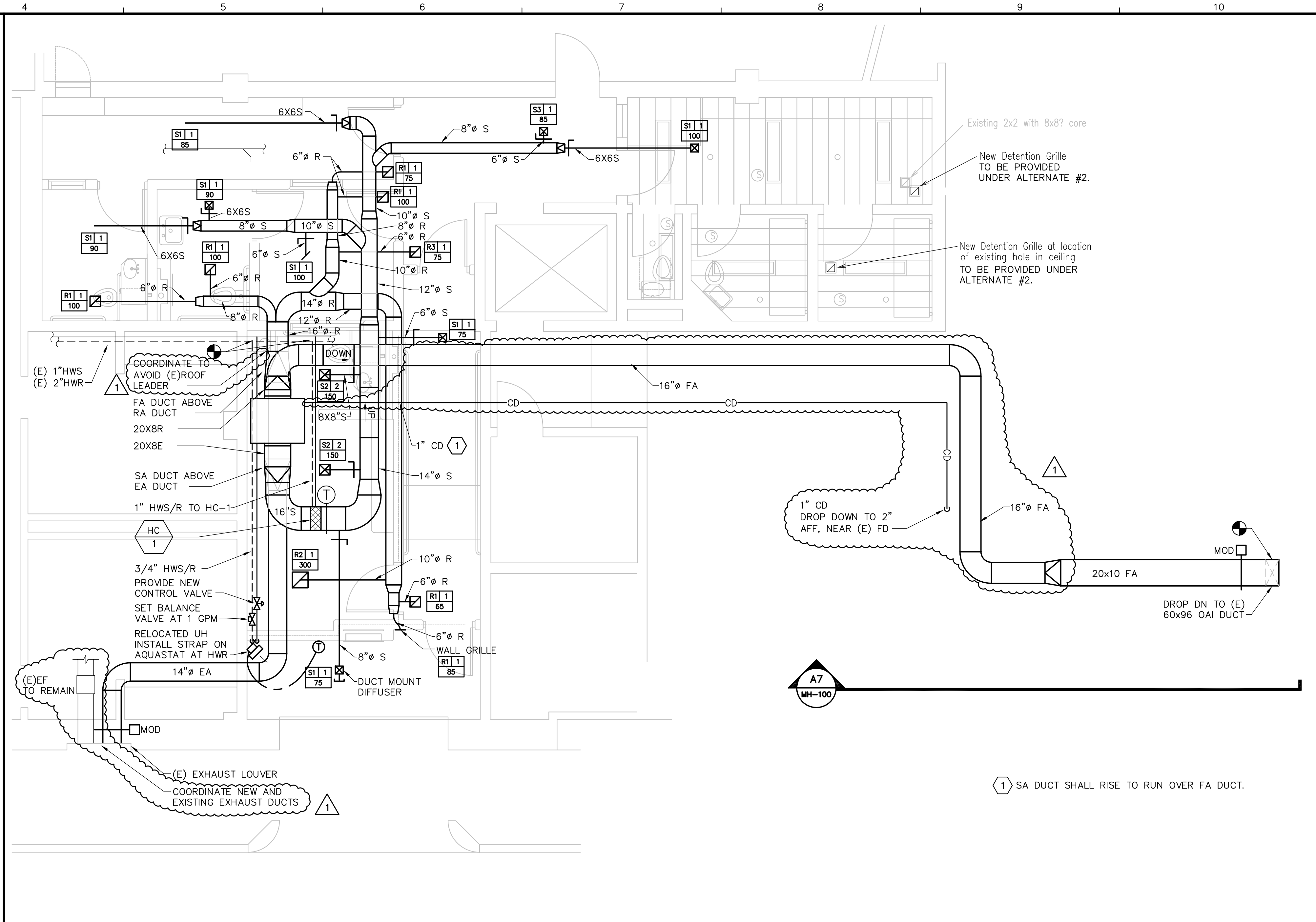
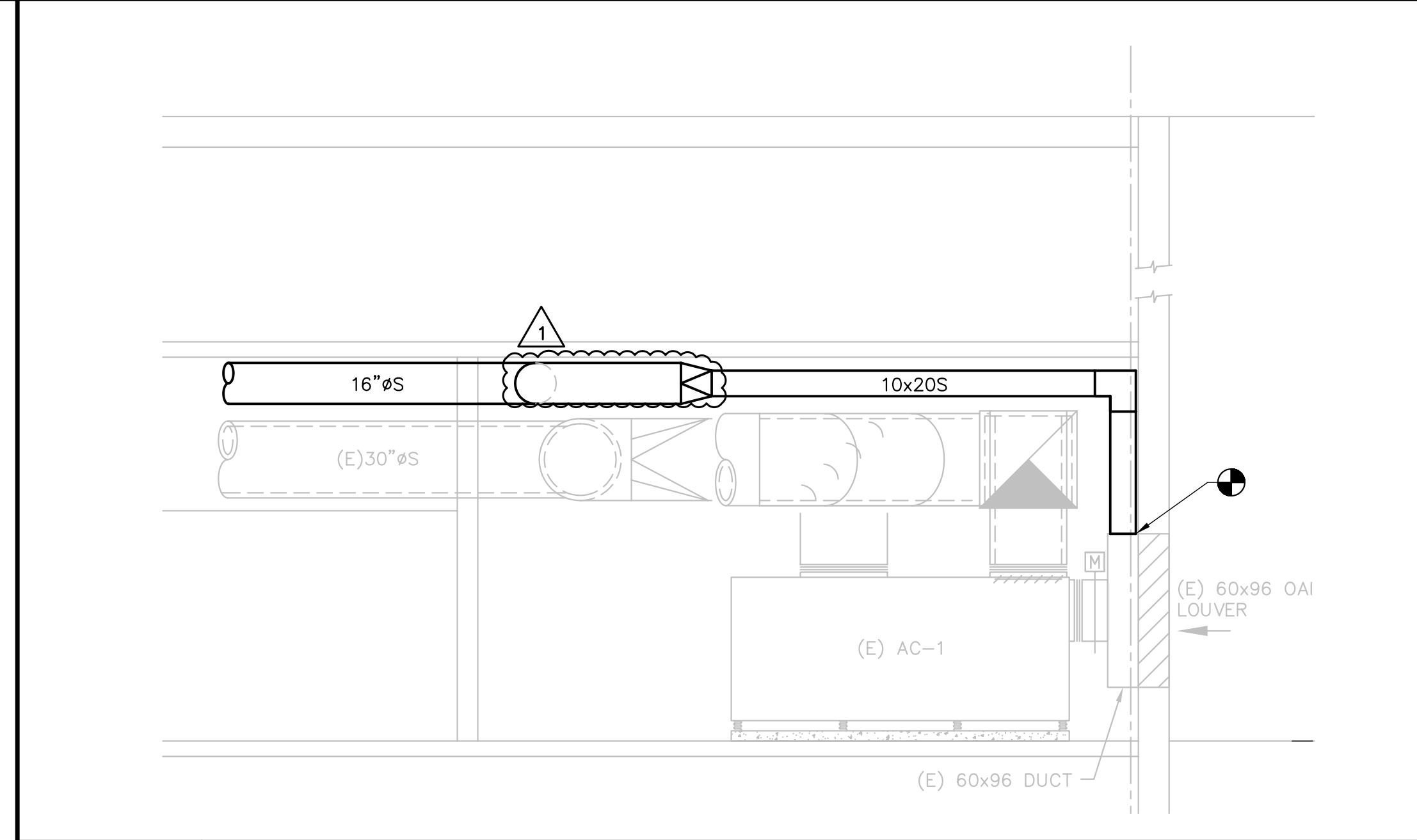


C1 MECHANICAL DEMOLITION PLAN
1/4" = 1'-0"



E6 MECHANICAL PLAN
1/4" = 1'-0"



A7 MECHANICAL SECTION
1/4" = 1'-0"

Winton Scott Architects
Portland, ME

allied
engineering, inc.
One Westbrook Commons
Westbrook, Maine 04092-2804
Telephone: 207-954-8126
Fax: 207-954-0603

R E V I S I O N S		NUMBER	DATE	BY	DESCRIPTION

Scale: As Noted
Date: 10-04-2005
Drawn By: VAG
Checked By: ASD
Project Mgr: WFF
Project No: 04084
Cad File: 04084M.DWG
Print Scale: 1 - 1

MECHANICAL DEMOLITION AND MECHANICAL PLANS
DETENTION AREA RENOVATIONS
CUMBERLAND COUNTY COURTHOUSE
PORTLAND, MAINE
© copyright 2005 Allied Subcontractors, Inc.

MH-100