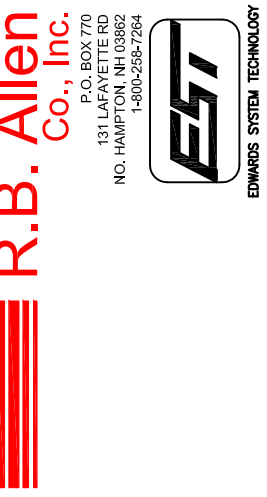
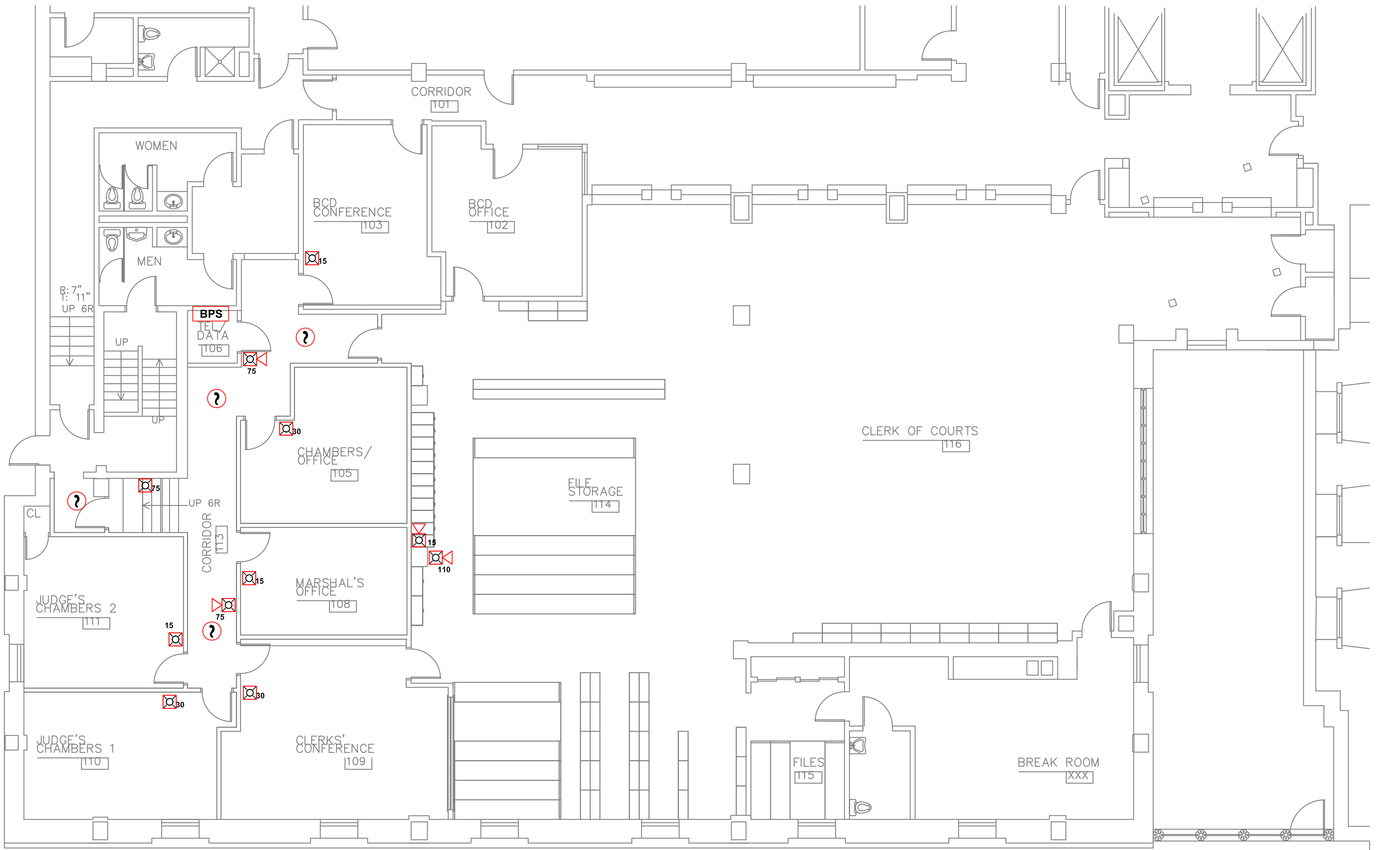


LEGEND:

RISER DIAG SYM	NFPA SYMBOL*	DESCRIPTION	CATALOG #
FACP	FACP	Fire Alarm Control Panel (existing)	Gamewell 650
BPS	FACU	Booster Power Supply	HPFF8
?	?	Addressable Smoke Detector w/ Base	XP95-P XP95-B6EZ
☒	☒	Strobe Unit (Adjustable Candela)	STW
☒#	☒	Horn/Strobe Unit (Adjustable Candela)	HSW

*NFPA 170 (2009)
Tables: 6.5, 6.7.1, 6.7.2, & 6.7.3



JOB NAME:

REV.	DESCRIPTION	DATE	DRWN:	TRD:	IRW/D:
0	Original Issue	2/17	kmb	TRD	

SCALE: 1/8" = 1'0"