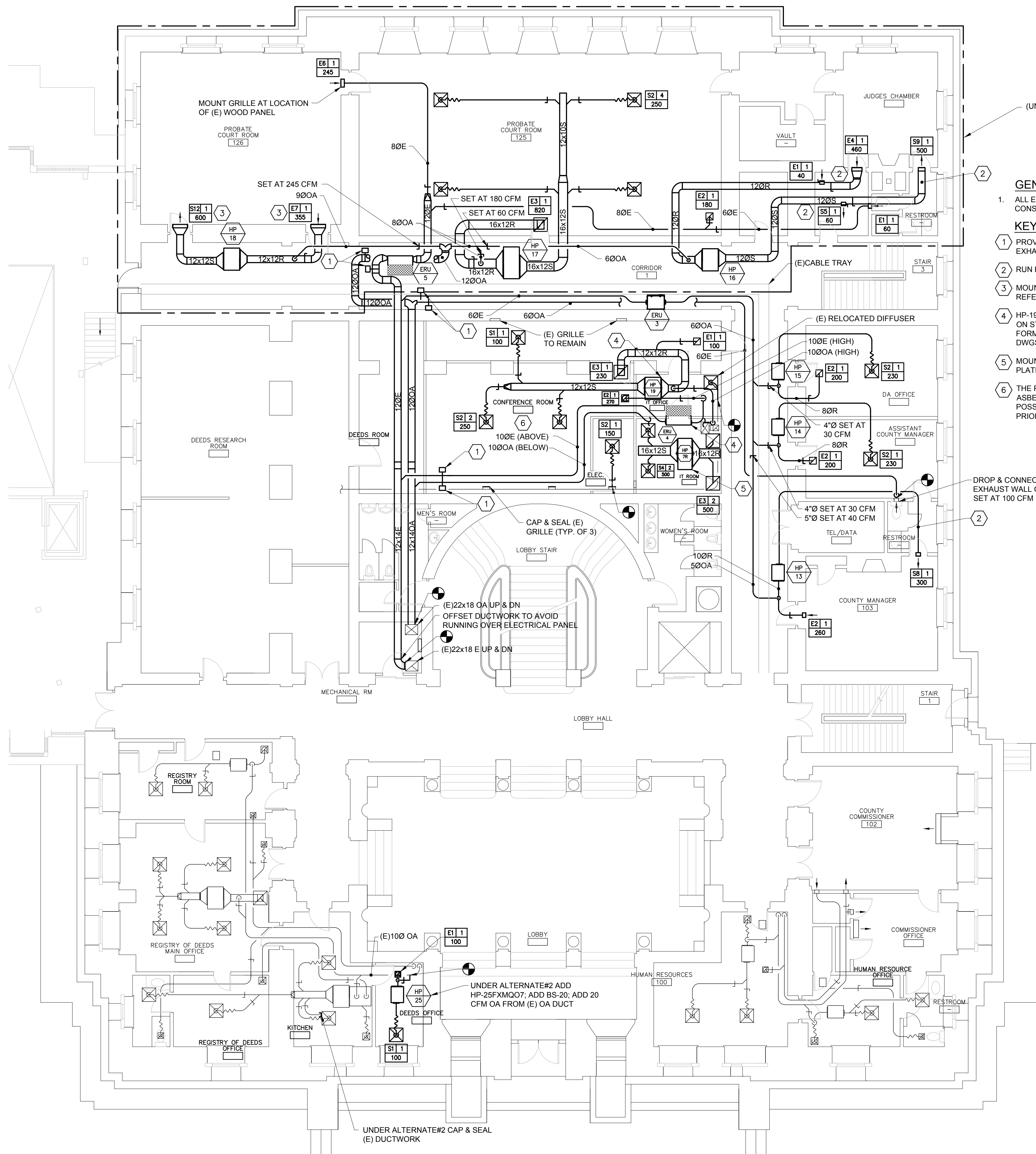
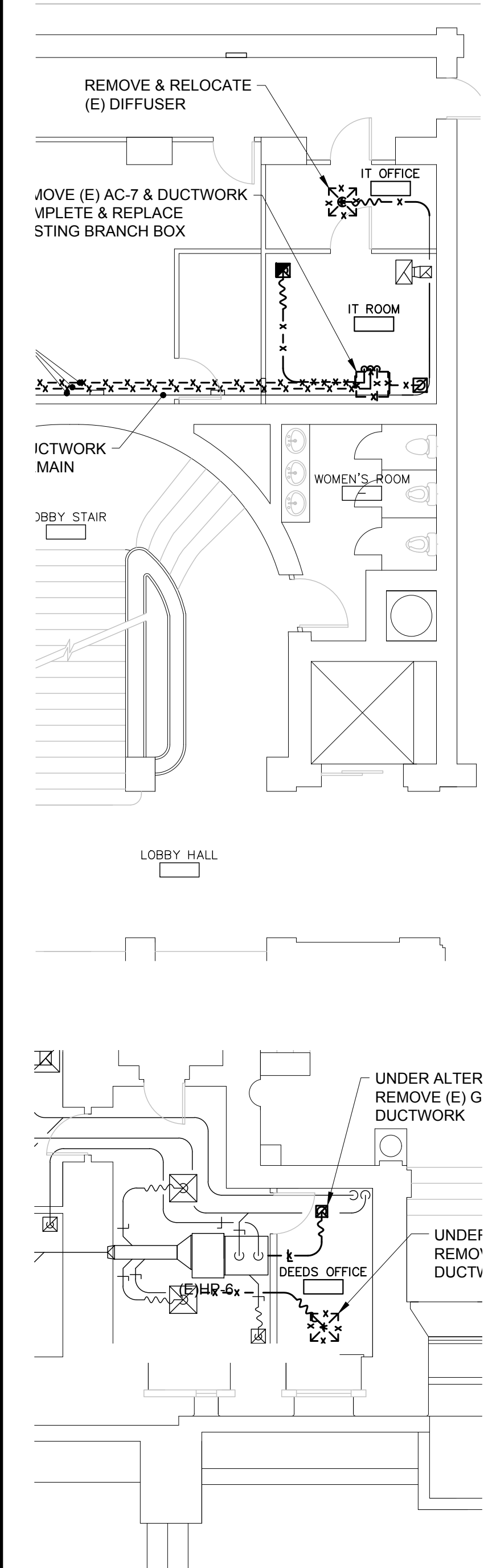


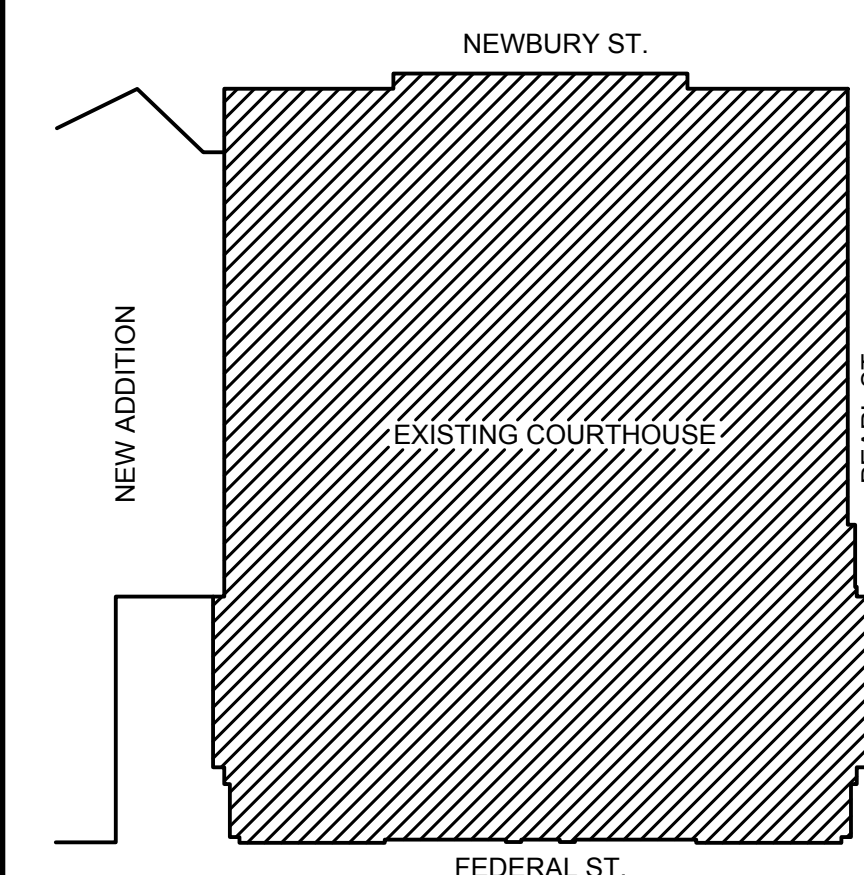
N:\Projects\2017\17051 - CCH AC and Heating Upgrades\1 Design Phase\2 DRAWINGS\17051.M.dwg Dec 22, 2017 - 10:48am



- GENERAL NOTES:**
1. ALL EXPOSED DUCTWORK SHALL BE ROUND, SPIRAL CONSTRUCTION, FIELD PAINTED BY DIVISION 9.
- KEYED NOTE:**
1. PROVIDE MOTORIZED DAMPER AT OUTSIDE AIR AND EXHAUST AIR CONNECTIONS TO UNIT.
 2. RUN EXPOSED BELOW (E) CEILING.
 3. MOUNT HIGH IN WOOD MOLDING AT FLAT PROFILE. REFER TO ARCHITECTURAL PLANS.
 4. HP-19 & ERU-4 SHALL BE MOUNTED ABOVE IT OFFICE ON STRUCTURAL PLATFORM TO AVOID SUSPENSION FORM CEILING ABOVE - REFER TO STRUCTURAL DWGS.
 5. MOUNT HP-7R IN IT ROOM, SUSPENDED FROM PLATFORM ABOVE.
 6. THE PLASTER CEILING IN THIS AREA IS POSITIVE FOR ASBESTOS. AVOID IMPACT TO THE EXTENT POSSIBLE. COORDINATE STRICTLY WITH OWNER PRIOR TO ANY IMPACT ASSOCIATED.



C9 MECHANICAL DEMOLITION
1/8" = 1'-0"
FIRST FLOOR PART PLANS



A9 KEY PLAN
NONE

160 Veranda Street
Portland, Maine 04103
T: 207.221.2260
F: 207.221.2266
Web: www.allied-eng.com

Allied Engineering
Structural Mechanical Electrical Commissioning

ANTHONY S. JAWIS
No. 6884
Professional Engineer
State of Maine

REVISIONS	NUMBER	DATE	BY	DESCRIPTION

Date: DECEMBER 22, 2017
Drawn By: SCL
Checked By: ASD
Project Mgr: ASD
Project No.: 17051
Cad File: 17051M.DWG
Graphic Scale: 0'

MECHANICAL FIRST FLOOR PLAN

AIR CONDITIONING AND HEATING UPGRADES
CUMBERLAND COUNTY COURTHOUSE
142 FEDERAL STREET, PORTLAND, MAINE

MH-100