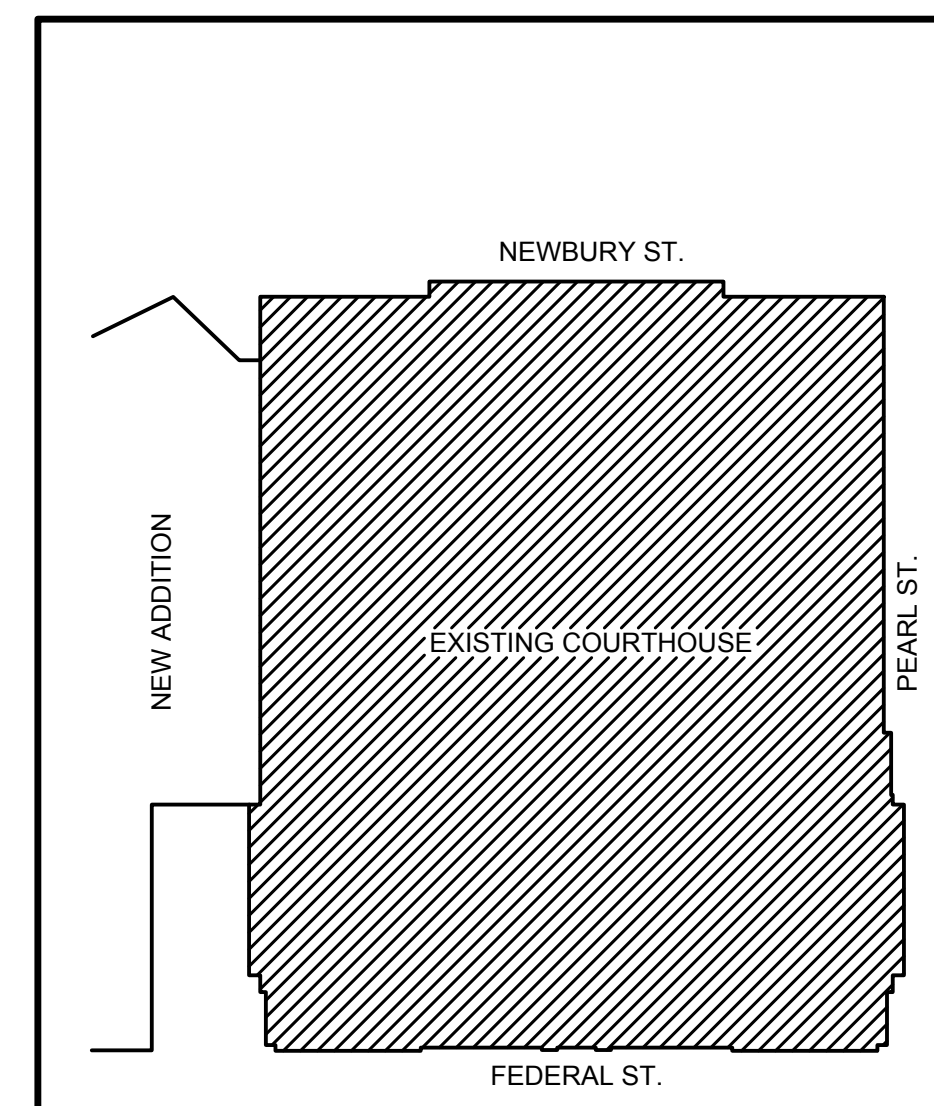
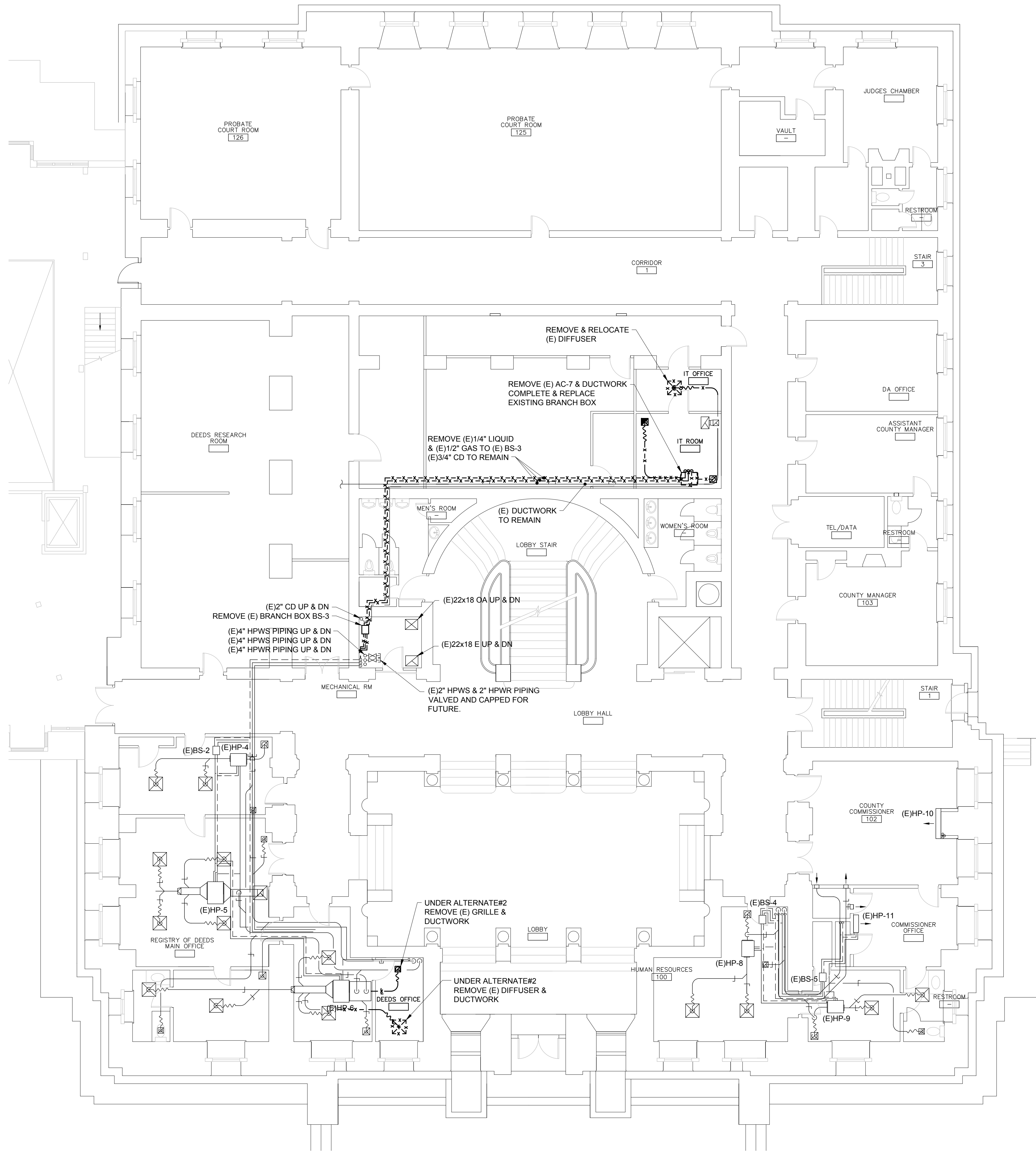
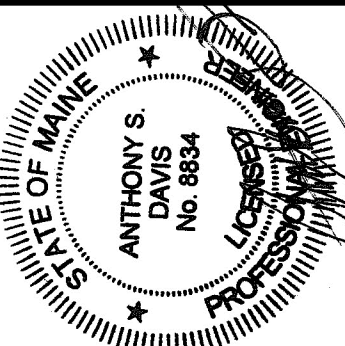


N:\Projects\2017\17051 - CCH AC and Heating Upgrades\1 Design Phase\2 DRAWINGS\17051.M.dwg Dec 22, 2017 - 10:48am



160 Veranda Street  
Portland, Maine 04103  
T: 207.221.2260  
F: 207.221.2266  
Web: www.allied-eng.com

**Allied Engineering**  
Structural Mechanical Electrical Commissioning



| REVISIONS |             |
|-----------|-------------|
| NUMBER    | DESCRIPTION |
|           |             |
|           |             |
|           |             |
|           |             |

|                |                   |
|----------------|-------------------|
| Date:          | DECEMBER 22, 2017 |
| Drawn By:      | SCL               |
| Checked By:    | ASD               |
| Project Mgr:   | ASD               |
| Project No.:   | 17051             |
| Cad File:      | 17051M.DWG        |
| Graphic Scale: | 0 1" = 1'-0"      |

**MECHANICAL DEMOLITION FIRST FLOOR PLAN**  
AIR CONDITIONING AND HEATING UPGRADES  
CUMBERLAND COUNTY COURTHOUSE  
142 FEDERAL STREET, PORTLAND, MAINE

A1 MECHANICAL DEMOLITION FIRST FLOOR PLAN

A9 KEY PLAN

**MD-100**