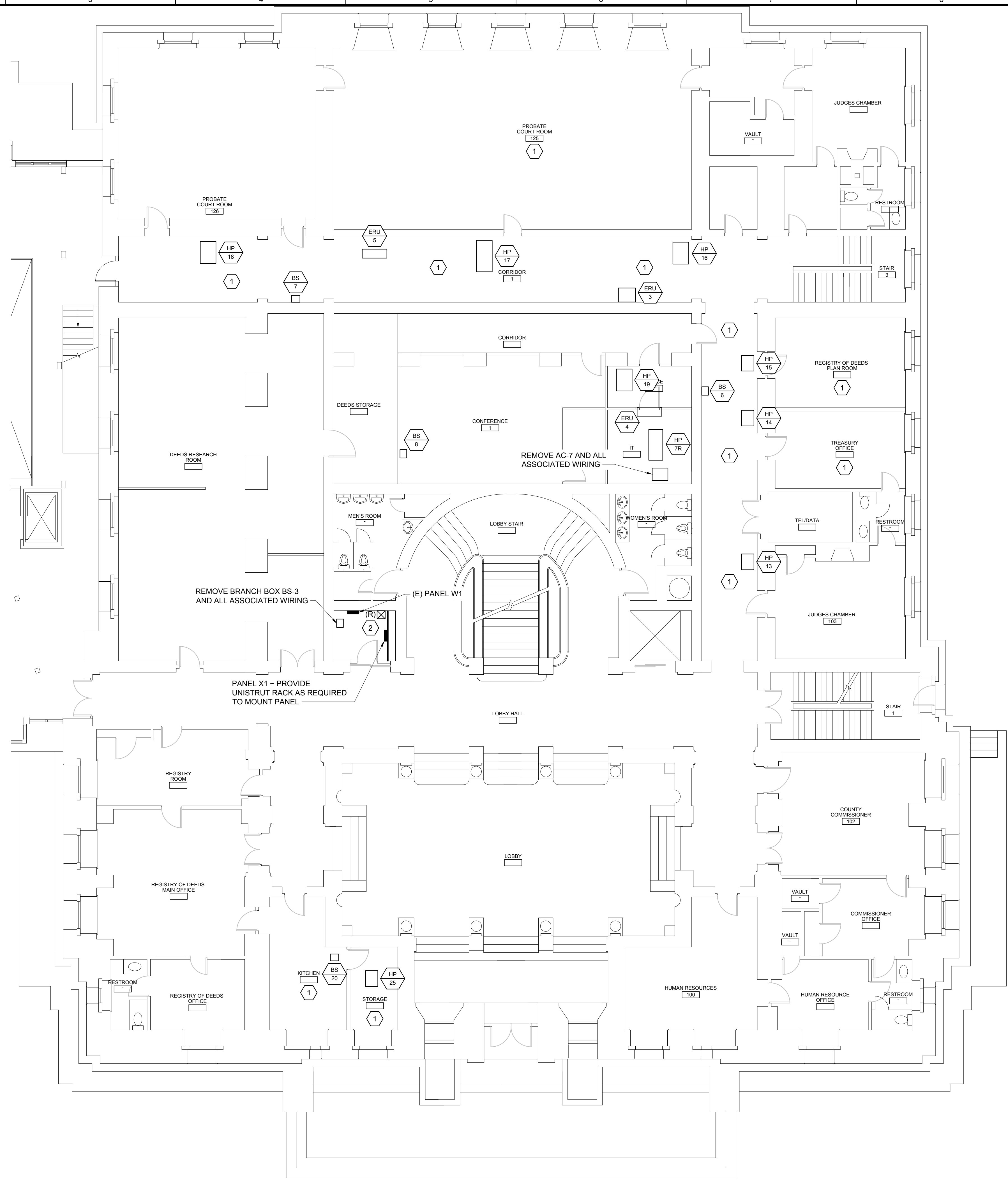
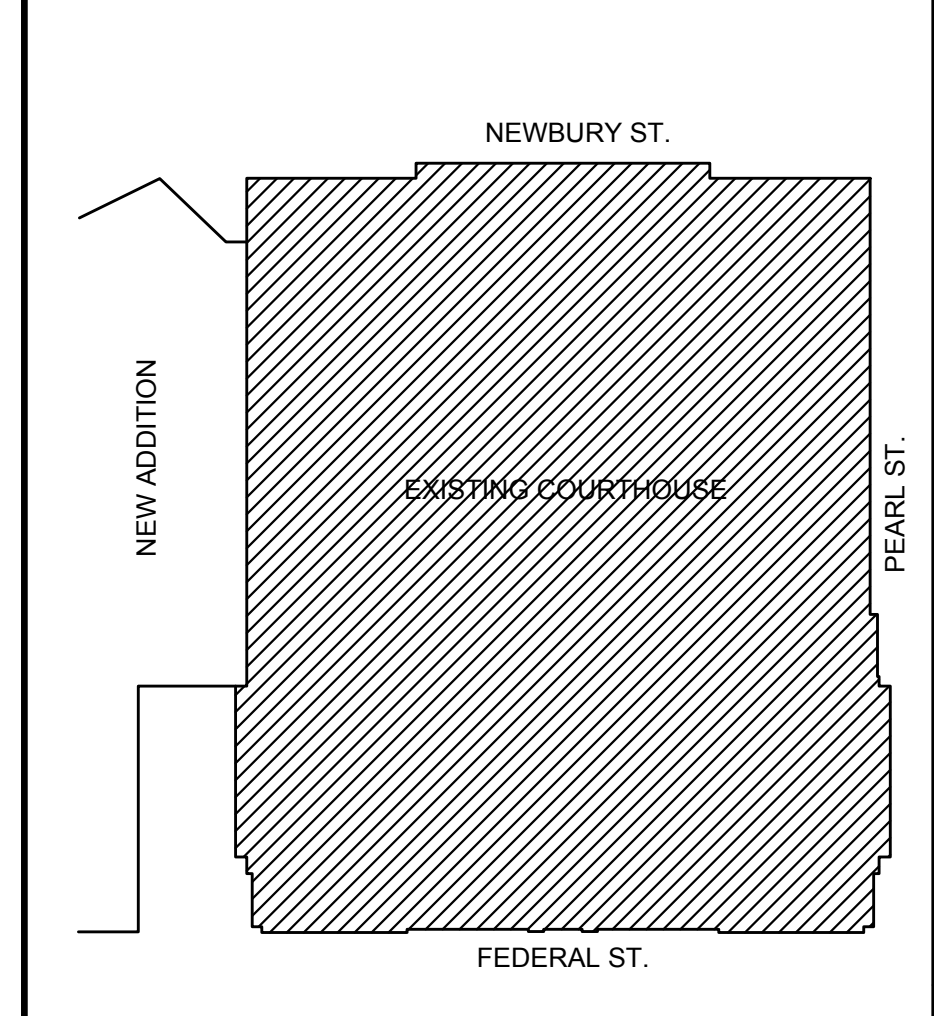


C:\Users\Gschertler\AppData\Local\Temp\AcPublish_9156\17051E.dwg Dec. 22, 2017 - 9:05am



- 1 EXISTING ACOUSTICAL CEILING IN THIS AREA WILL BE REMOVED AND RE-INSTALLED UNDER OTHER DIVISIONS. REMOVE, PROTECT, AND RE-INSTALL EXISTING CEILING MOUNTED ELECTRICAL ITEMS. PROVIDE SUPPORTS AS REQUIRED TO SUPPORT ABOVE-CEILING WIRING IN ACCORDANCE WITH CODE REQUIREMENTS.
- 2 REMOVE EXISTING STARTER FOR EXISTING COOLING TOWER CT-1 FAN. WIRE AND CONNECT FAN VIA VFD FURNISHED BY DIVISION 23. SEE SHEET E-102 FOR VFD LOCATION.

C9 KEYNOTES



A9 KEY PLAN

160 Veranda Street
Portland, Maine 04103
T: 207.221.2260
F: 207.221.2266
Web: www.allied-eng.com

Allied Engineering
Structural Mechanical Electrical Commissioning

REVISIONS			
NUMBER	DATE	BY	DESCRIPTION

Date: DECEMBER 22, 2017
Drawn By: GMC
Checked By: SRM
Project Mgr: ASD
Project No: 17051
Car File: 17051E.DWG
Graphic Scale: 0 1"

ELECTRICAL FIRST FLOOR PLAN

AIR CONDITIONING AND HEATING UPGRADES
CUMBERLAND COUNTY COURTHOUSE
142 FEDERAL STREET, PORTLAND, MAINE

A1 ELECTRICAL FIRST FLOOR PLAN
SCALE: 1/8"=1'-0"

E-100