

**CLERKS' OFFICE RENOVATIONS**  
 CUMBERLAND COUNTY COURTHOUSE  
 PORTLAND, MAINE



93 Pitt Street  
 Portland, ME 04103  
 207.747-5975 voice  
 822 Grover Hill Rd.  
 Bethel, ME 04217  
 207.824.7237 voice/fax  
 info@smithreuter.com

FIRST FLOOR REFLECTED CEILING PLAN

BGS #2720  
 SRL 239-18  
 10/28/16

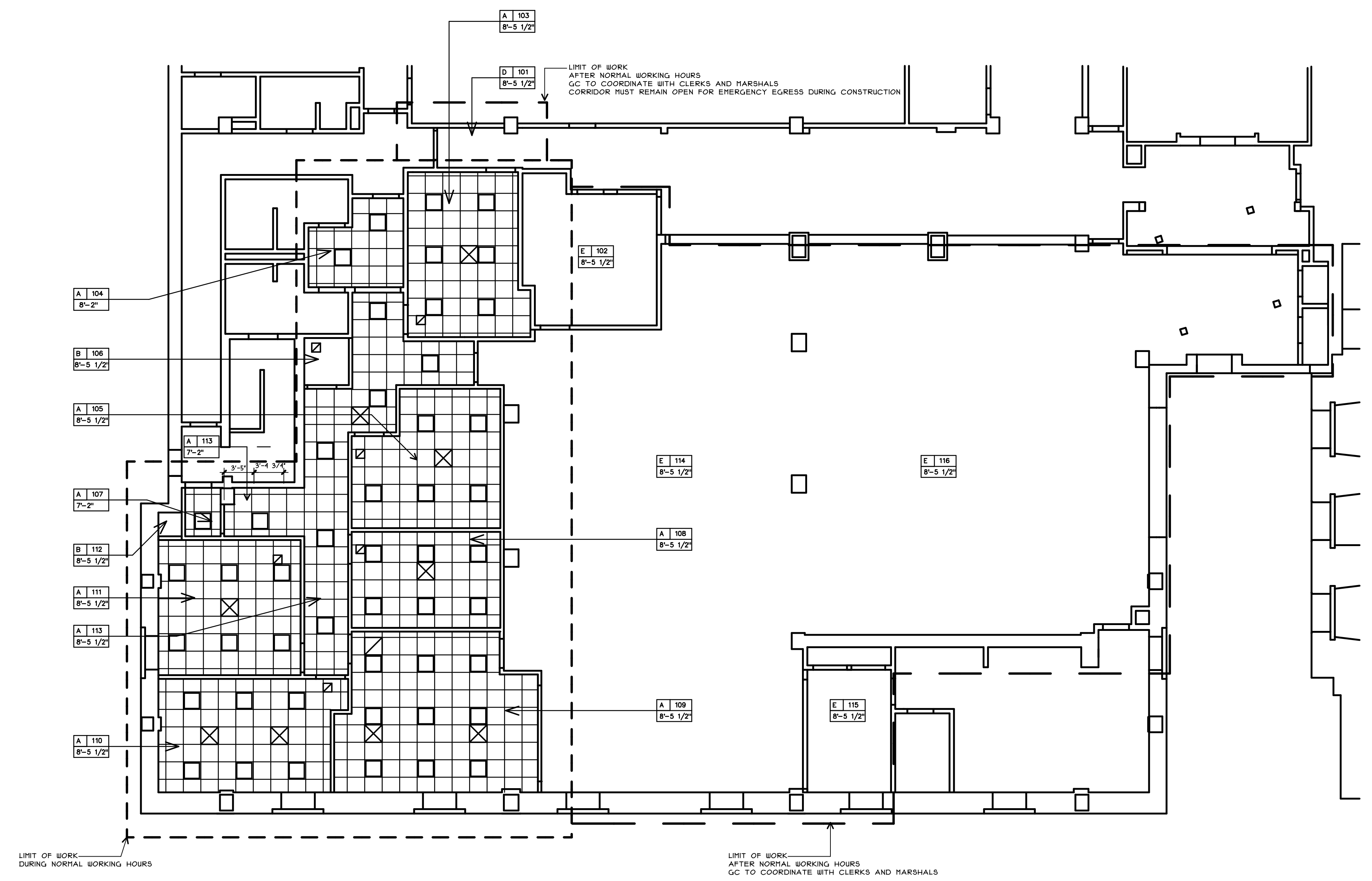
A3

**CEILING TYPES:**

A	2 X 2 SUSPENDED ACOUSTICAL TILE CEILING W/ REGULAR EDGE 1 STANDARD GRID
B	GYPSON WALLBOARD - TYPE 'X' - SUSPENDED
C	EXPOSED CONSTRUCTION
D	PATCH AND EXTEND EXISTING GRID AND TILES
E	NO WORK

**LEGEND**

	CEILING TYPE
	ROOM NUMBER
	CEILING HEIGHT
	RECESSED 2X2 FLUORESCENT FIXTURE
	RECESSED 1X4 FLUORESCENT FIXTURE
	SURFACE MOUNTED 2X4 FLUORESCENT FIXTURE
	SURFACE MOUNTED 1X4 FLUORESCENT FIXTURE
	SURFACE MOUNTED 1X8 FLUORESCENT FIXTURE
	RECESSED DOWNLIGHT
	SURFACE MOUNTED FIXTURE
	PENDANT FIXTURE
	WALL MOUNTED LIGHT FIXTURE
	EGGCRATE LENS W/ RECESSED FIXTURE
	TRACK LIGHTING
	SUPPLY AIR DIFFUSER
	RETURN AIR REGISTER OR EXHAUST GRILLE



**FIRST FLOOR REFLECTED CEILING PLAN**

1/8" = 1'-0"

**GRAPHIC SCALE**

