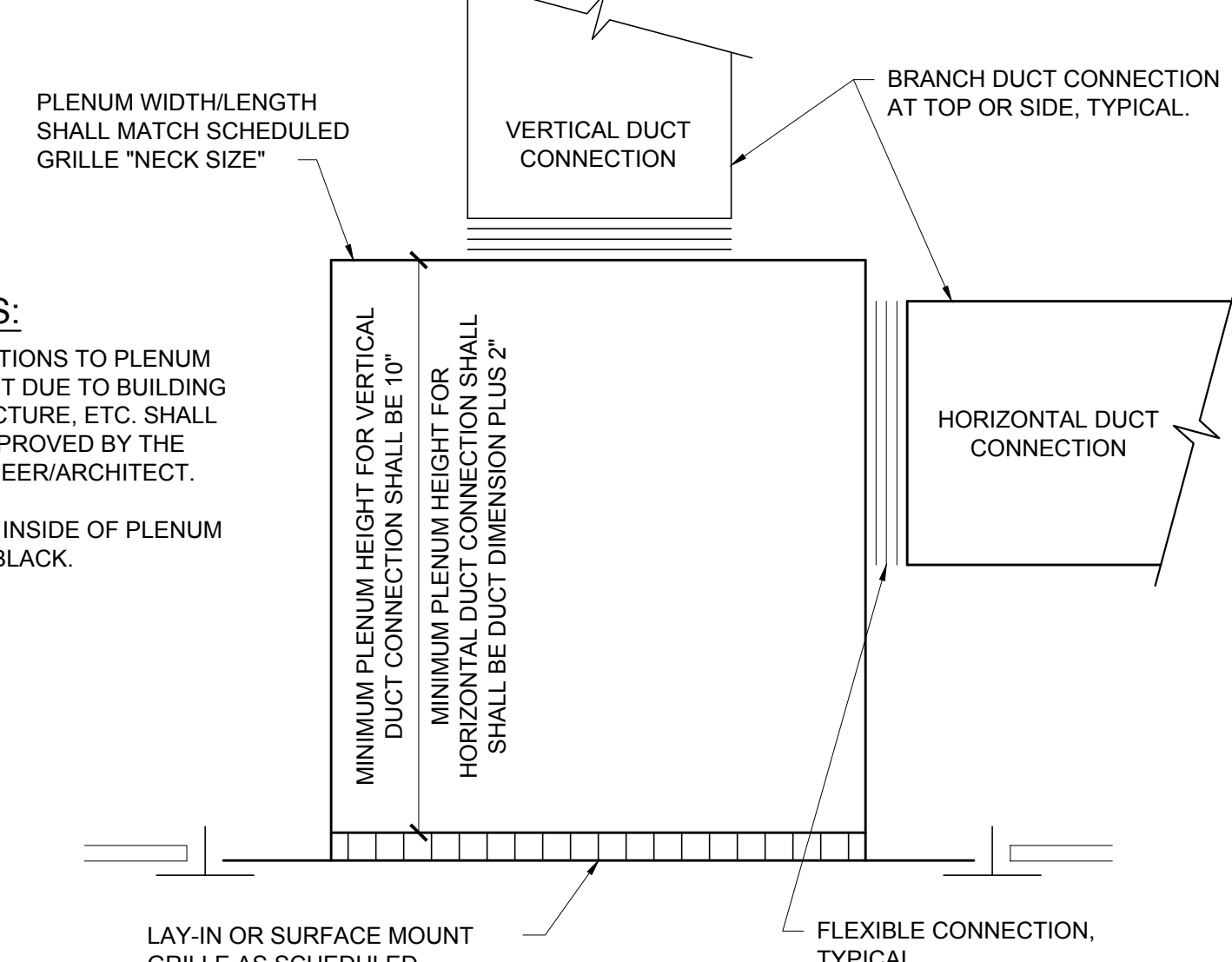


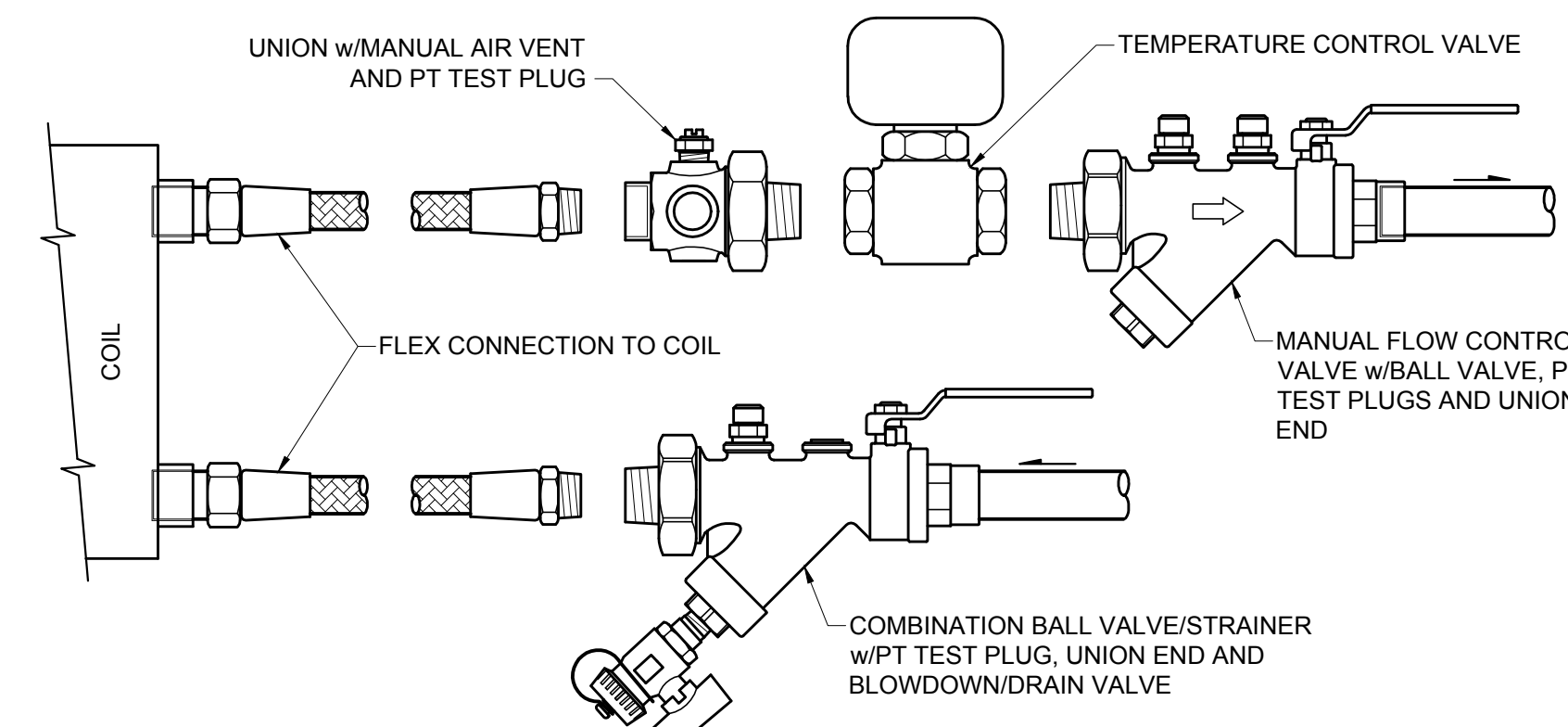
FLEX DUCT NOTES:

1. FLEX DUCT SHOULD EXTEND STRAIGHT FOR SEVERAL INCHES FROM A CONNECTION BEFORE BENDING.
2. FLEX DUCT SHALL HAVE A MAXIMUM OF 1/2" SAG PER FOOT OF SUPPORT SPACING.
3. CLOSER MAXIMUM INTERVALS MAY BE SPECIFIED AS A CONDITION OF U.L. LISTING, PARTICULARLY IN FIRE RATED FLOOR-CEILING ASSEMBLIES.
4. MINIMUM BEND RADIUS (R) SHALL BE EQUAL TO OR GREATER THAN THE FLEX DUCT DIAMETER (D), TYPICAL.



NOTES:

1. VARIATIONS TO PLENUM HEIGHT DUE TO BUILDING STRUCTURE, ETC. SHALL BE APPROVED BY THE ENGINEER/ARCHITECT.
2. PAINT INSIDE OF PLENUM FLAT BLACK.



F1 DETAIL ~ DIFFUSER BRANCH AND TAKE-OFF

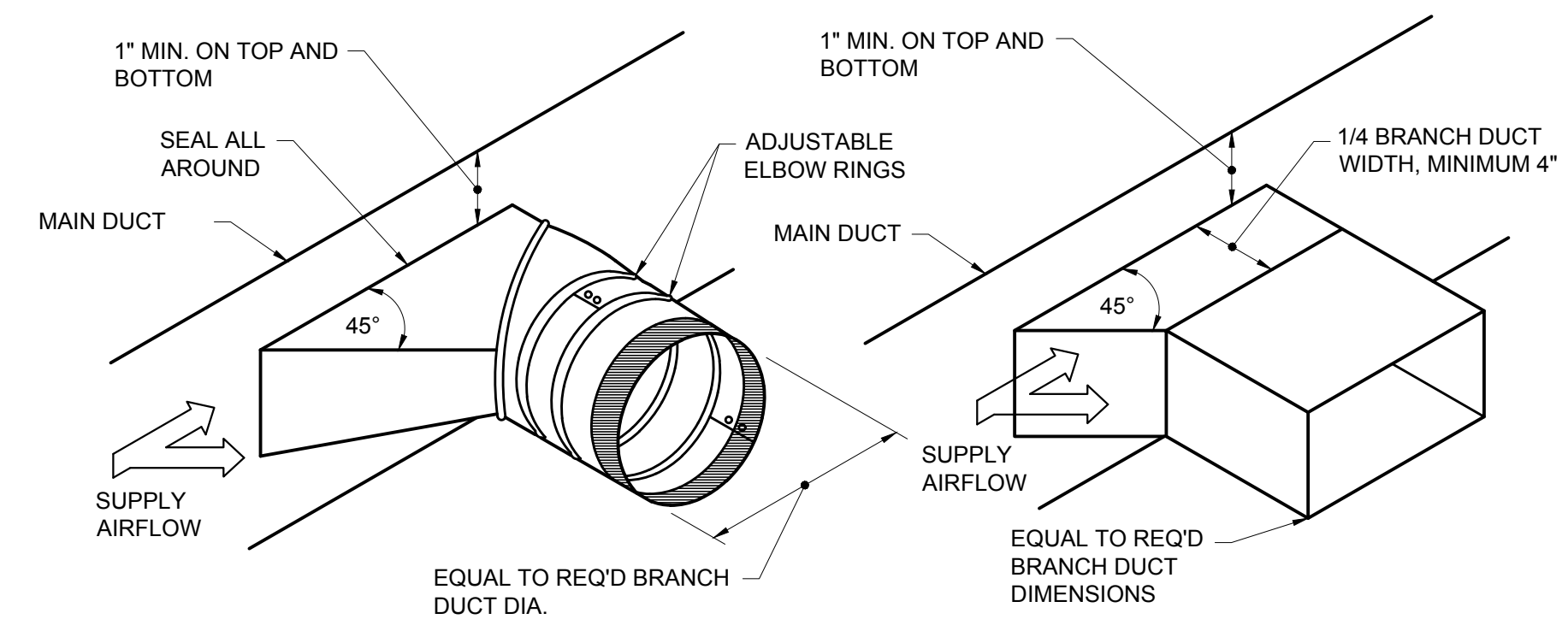
NONE

F1 DETAIL ~ RETURN DUCT CONNECTION

NONE

F8 DETAIL ~ 2-WAY COIL PAK PIPING

NONE



D1 DETAIL ~ RETURN DUCT CONNECTION

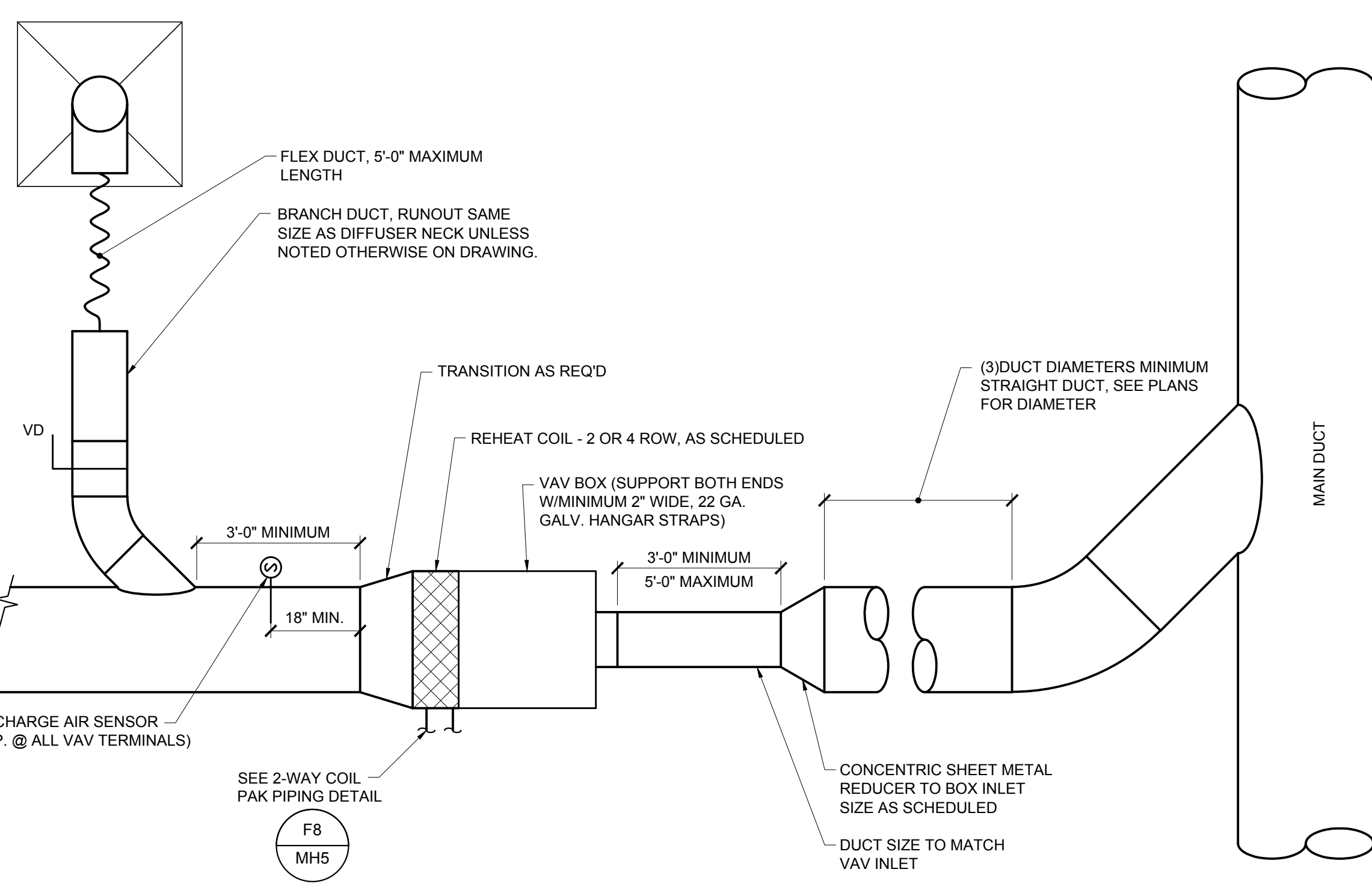
NONE

SINGLE DUCT AIR TERMINAL SCHEDULE																			
TAG	SERVES	Trane Model No.	INLET SIZE	CFM MIN	HEAT CFM	CFM MAX	OUTLET SIZE	MAX RAD. & DISCH. NC	A.P.D. AT MAX. COOLING	COIL MBH	GPM	MAX WPD	EWT	LWT	EAT	ROOM TEMP	LAT	ROWS	RUNOUT SIZE
VAV C-1	BCD OFFICE	VCWF05	5	105	125	210	10"x 8"	30	0.17"	7.9	0.5	0.3'	180	150	55	70	90	2	1/2"
VAV C-2	BCD CONERENCE	VCWF06	6	200	240	400	10"x 8"	30	0.32"	15.1	1.0	0.3'	180	150	55	70	90	2	3/4"
VAV C-3	CHAMBERS OFFICE	VCWF05	5	105	125	215	10"x 8"	30	0.17"	8.1	0.5	0.3'	180	150	55	70	90	2	1/2"
VAV C-4	MARSHAL'S OFFICE	VCWF05	5	85	105	170	10"x 8"	30	0.17"	6.4	0.4	0.3'	180	150	55	70	90	2	1/2"
VAV C-5	JUDGE'S CHAMBERS 2	VCWF05	5	130	190	255	10"x 8"	30	0.17"	9.6	0.6	0.3'	180	150	55	70	90	2	1/2"
VAV C-6	JUDGE'S CHAMBERS 1	VCWF06	6	170	245	340	10"x 8"	30	0.32"	12.9	0.9	0.3'	180	150	55	70	90	2	3/4"
VAV C-7	CLERKS CONFERENCE	VCWF08	8	245	310	490	11"x 10"	30	0.34"	18.5	1.2	2.3'	140	110	55	70	90	2	3/4"

NOTES:

1. VAV BOX MANUFACTURER: BOX, AIRFLOW PICKUP, AND HW COIL.
2. CONTROL CONTRACTOR: DAMPER ACTUATOR, VALVE ACTUATOR, TRANSFORMERS, AND WIRING BETWEEN THE JUNCTION BOX AND VAV BOX.
3. ELECTRICAL CONTRACTOR: LINE VOLTAGE WIRING TO THE JUNCTION BOX.

REGISTERS - GRILLES - DIFFUSERS (RGD) SCHEDULE										
TAG	PRICE MODEL	TYPE	NECK SIZE	FACE SIZE	CFM RANGE	MAX TOTAL P.D. (IN.W.C.)	MAX NC LEVEL	BORDER TYPE	BLOW	NOTES
S-1	SCD	SQ. CEILING SUPPLY DIFFUSER	6" DIA	24" X 24"	0-140	0.07"	16	LAY-IN	4-WAY	
S-2	SCD	SQ. CEILING SUPPLY DIFFUSER	8" DIA	24" X 24"	141-270	0.07"	19	LAY-IN	4-WAY	
S-3	SCD	SQ. CEILING SUPPLY DIFFUSER	10" DIA	24" X 24"	271-370	0.07"	22	LAY-IN	4-WAY	
S-4	SCD	SQ. CEILING SUPPLY DIFFUSER	12" DIA	24" X 24"	371-630	0.07"	24	LAY-IN	4-WAY	
S-5	SCD	SQ. CEILING SUPPLY DIFFUSER	14" DIA	24" X 24"	631-800	0.07"	26	LAY-IN	4-WAY	
R-1	530	STEEL RETURN, 3/4" SPACING, 45 DEG VANES	8" X 8"	9.75" X 9.75"	0-110	0.05"	20	SURFACE MT.	-----	6" DIA RUNOUT
R-2	530	STEEL RETURN, 3/4" SPACING, 45 DEG VANES	12" X 12"	13.75" X 13.75"	171-220	0.05"	20	SURFACE MT.	-----	8" DIA RUNOUT
R-3	530	STEEL RETURN, 3/4" SPACING, 45 DEG VANES	12" X 12"	13.75" X 13.75"	221-380	0.05"	20	SURFACE MT.	-----	10" DIA RUNOUT
R-4	530	STEEL RETURN, 3/4" SPACING, 45 DEG VANES	22" X 22"	23.75" X 23.75"	361-600	0.05"	20	LAY-IN	-----	12" DIA RUNOUT
R-5	530	STEEL RETURN, 3/4" SPACING, 45 DEG VANES	22" X 22"	23.75" X 23.75"	601-900	0.05"	20	LAY-IN	-----	14" DIA RUNOUT



A1 DETAIL ~ VAV BOX SCHEMATIC

NONE

A4 SCHEDULES ~ MECHANICAL

NONE



Allied Engineering
Structural Mechanical Electrical Commissioning
160 Veranda Street
Portland, Maine 04103
T: 207.221.2268
F: 207.221.2266
Web: www.allied-eng.com

AEI Project No: 16057

GROUND FLOOR CLERK'S RENOVATIONS
 CUMBERLAND COUNTY COURTHOUSE
 PORTLAND, MAINE



93 Pitt Street
Portland, ME 04103
207.747-5975 voice
822 Grover Hill Rd.
Bethel, ME 04217
207.824.7237 voice/fax
info@smithreuter.com

MECHANICAL SCHEDULES, DETAILS AND NOTES

BGS #2720
SRL 239-18

10/28/2016

MH5