



Allied Engineering
Structural Mechanical Electrical Commissioning

160 Veranda Street
Portland, Maine 04103
T: 207.221.2266
F: 207.221.2266
Web: www.allied-eng.com

AEI Project No: 16057

**GROUND FLOOR CLERK'S
RENOVATIONS**
CUMBERLAND COUNTY COURTHOUSE
PORTLAND, MAINE



SRL Architects
Bethel Portland

93 Pitt Street
Portland, ME 04103
207.747-5975 voice

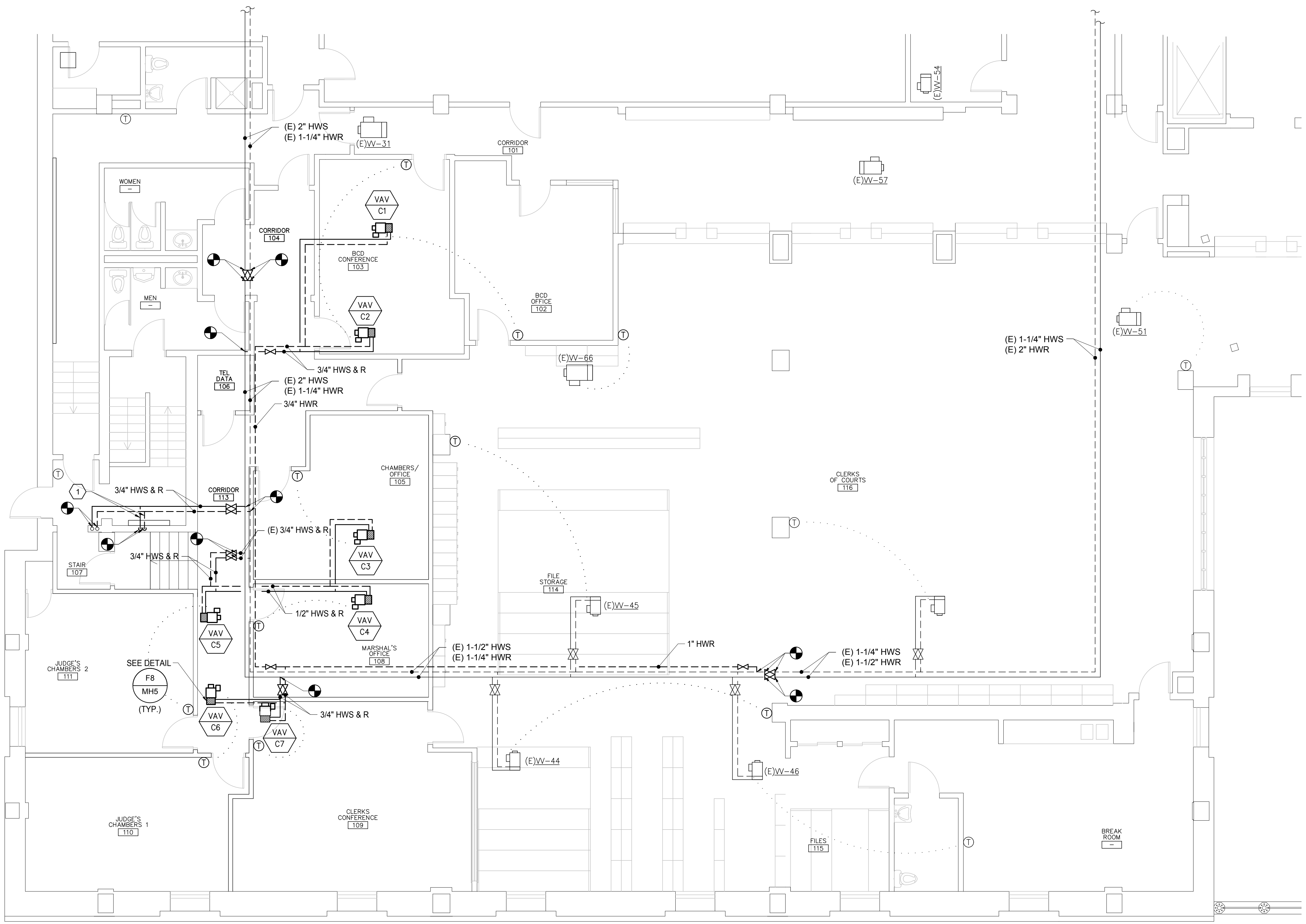
822 Grover Hill Rd.
Bethel, ME 04217
207.824.7237 voice/fax
info@smithreuter.com

MECHANICAL PIPING
PART PLAN -
GROUND FLOOR

BGS #2720
SRL 239-18

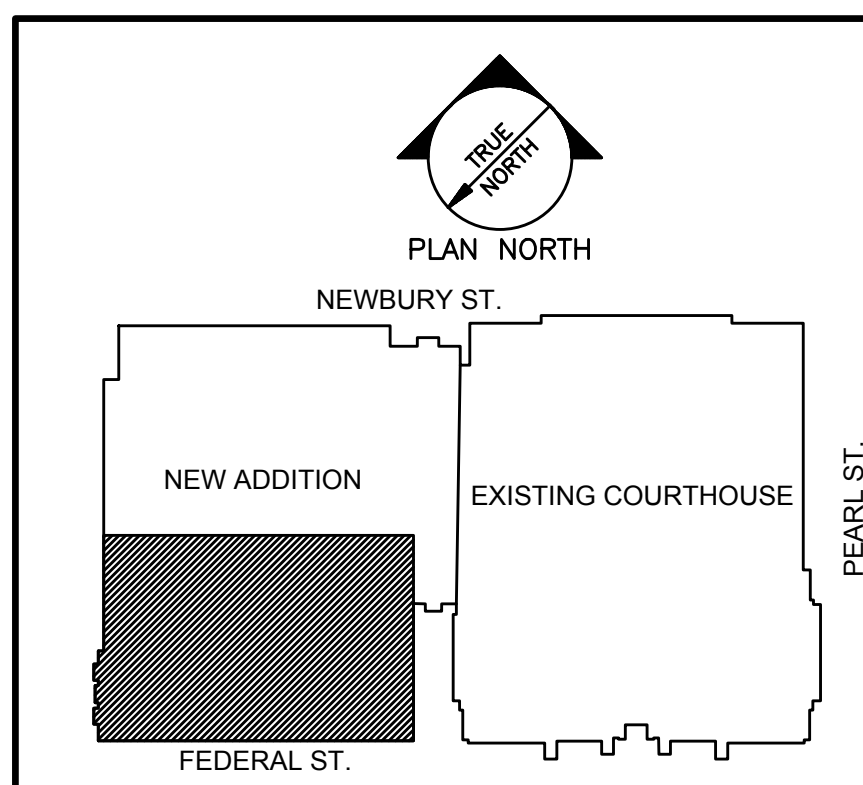
10/28/2016

MP1



KEYED NOTES:

1 INSTALL RELOCATED ISOLATION VALVES, BALANCE VALVE, AND CONTROL VALVE AT HOT WATER SUPPLY/RETURN PIPING TO SERVE CUH-1. SET FLOW AT CUH-1 TO 2.0 GPM.



A9

KEY PLAN

NONE

A1

MECHANICAL PIPING PART PLAN - GROUND FLOOR

3/16" = 1'-0"

N:\Projects\2016\16057 - CCHC Clerk's Office Renovations\1 Design Phase2\DRAWINGS\16057A.dwg Oct 28, 2016 10:26am