

**LIGHTING FIXTURE SCHEDULE**



Dimensions: Width = 24" Length = 24" Recess Height = 4.875"

**Type: A1**

**Description:** Recessed 2 x 2 recessed fluorescent with white acrylic diffuser, and with upper curved white metal reflector. Provide flush frame for mounting in suspended grid ceilings. Provide integral step-dim LED driver for 50% and 100% light output.

**Lamps:** 3500K LED (supplied with luminaire)

**Manufacturers:** Columbia Lighting #LTRE22-35MLG-RFA-ESD-U

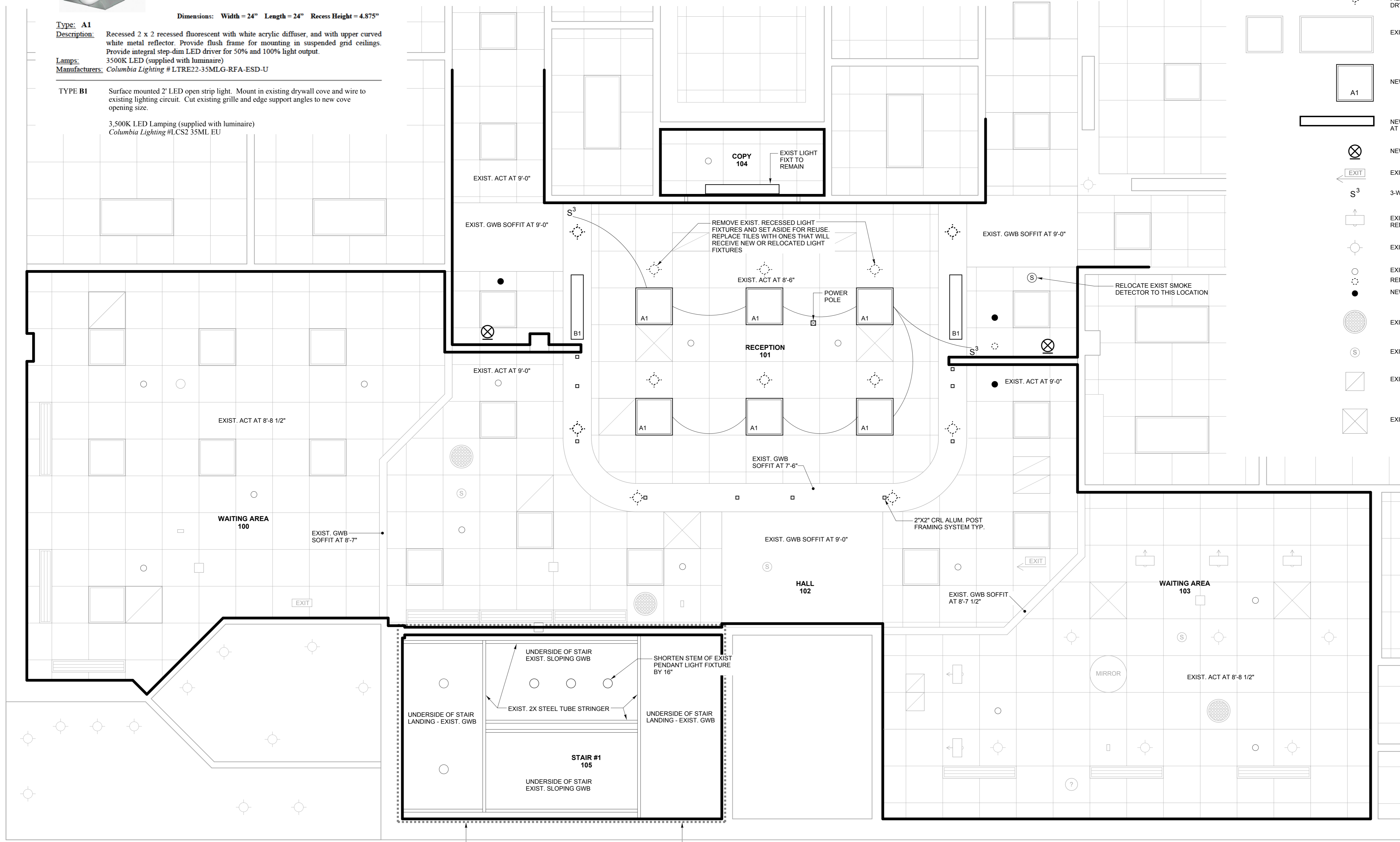
**TYPE B1**

Surface mounted 2" LED open strip light. Mount in existing drywall cove and wire to existing lighting circuit. Cut existing grille and edge support angles to new cove opening size.

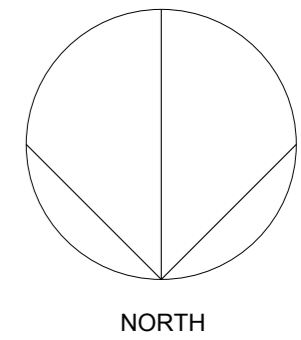
3,500K LED Lamping (supplied with luminaire)  
Columbia Lighting #LCS2 35ML EU

**LEGEND**

- EXISTING GWB COVE LIGHT FIXTURE TO BE REMOVED. FILL IN REMAINING OPENING WITH BLOCKING AND DRYWALL TO MATCH EXIST. SOFFIT.
- EXISTING RECESSED LIGHT FIXTURE TO BE REMOVED. FILL IN REMAINING OPENING WITH BLOCKING AND DRYWALL TO MATCH EXIST. SOFFIT.
- EXISTING RECESSED LIGHT FIXTURE TO REMAIN
- NEW RECESSED FLUORESCENT LIGHT FIXTURE
- NEW WALL MOUNTED 4' LONG LIGHT FIXTURE AT 7'-6" AFF
- NEW WALL MOUNTED EXIT SIGN
- EXISTING EXIT SIGN
- 3-WAY LIGHT SWITCH
- EXISTING SURFACE MOUNTED LIGHT FIXTURE TO REMAIN
- EXISTING RECESSED LIGHT FIXTURE TO REMAIN
- EXISTING SPRINKLER HEAD  
REMOVE EXISTING SPRINKLER HEAD  
NEW SPRINKLER HEAD
- EXISTING SPEAKER
- EXISTING SMOKE DETECTOR
- EXISTING RETURN GRILLE
- EXISTING SUPPLY AIR DIFFUSER



WORK IN THIS AREA UNDER ALTERNATE #1:  
SEE A300 SERIES PLANS



Architect  
**Winton Scott Architects**  
5 Milk Street  
Portland, Me 04101  
207-774-4811



**Reception Areas Renovation**  
Portland Family Medicine  
272 Congress Street  
Portland, Maine 04101

First Floor Reflected Ceiling Plan  
3/8" = 1'-0"  
0 4 8

**A 401**  
PERMIT SET  
May 16, 2016