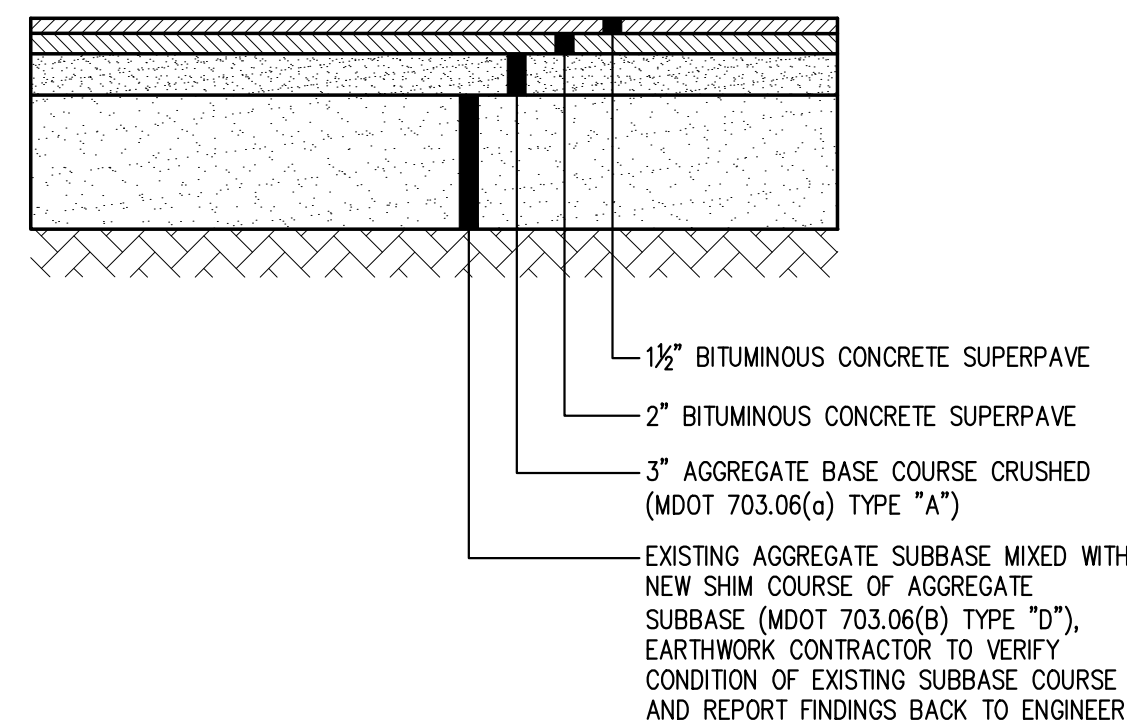


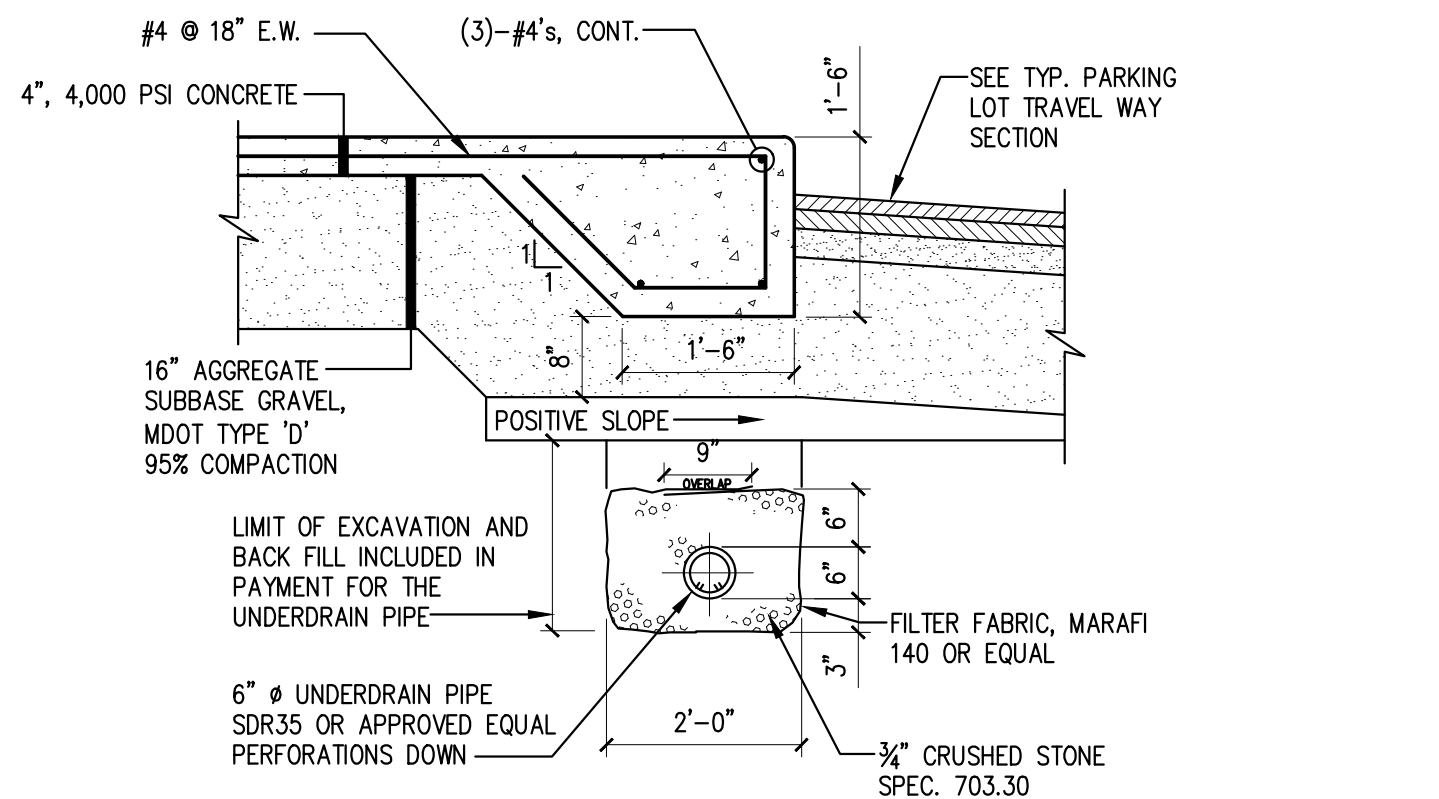
NOTE:
 1. COMPACT GRAVEL SUBBASE, BASE COURSE TO 95% OF MAXIMUM DENSITY USING HEAVY ROLLER COMPACTION.
 2. CONTRACTOR SHALL SET GRADE STAKES MARKING SUBBASE AND FINISH GRADE ELEVATIONS FOR CONSTRUCTION REFERENCE.

TYP. PARKING LOT TRAVEL WAY SECTION NTS



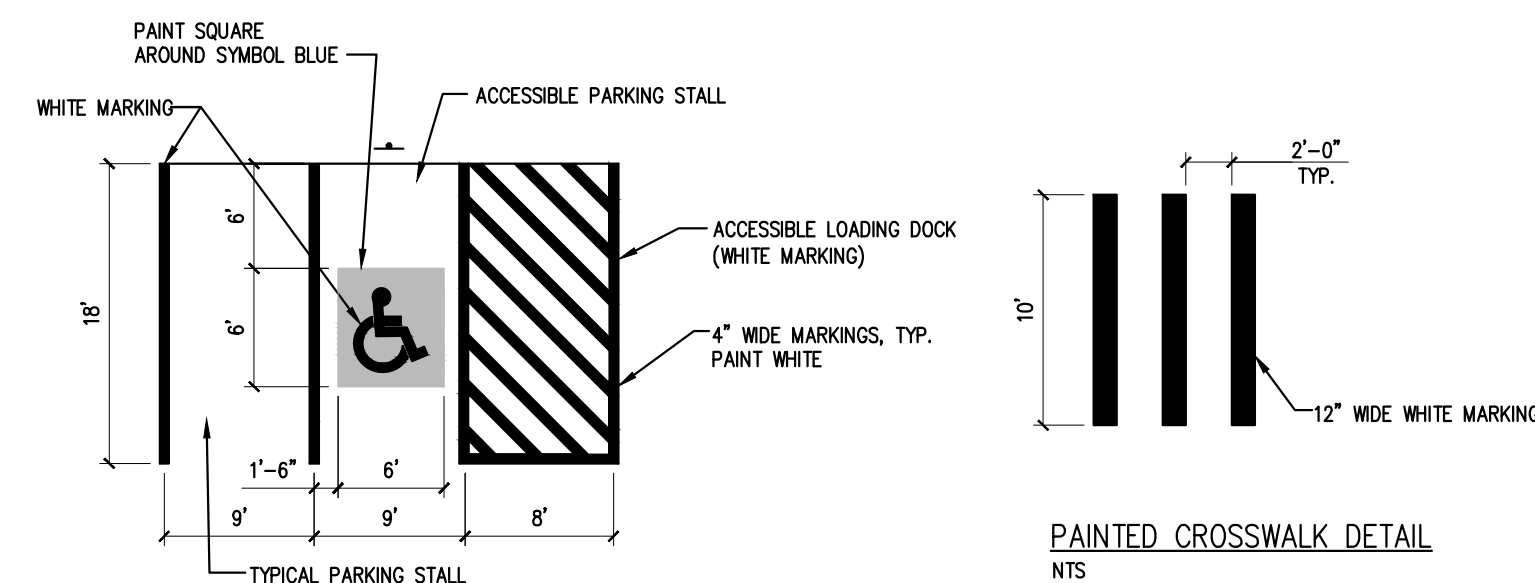
NOTE:
 1. COMPACT GRAVEL SUBBASE, BASE COURSE TO 95% OF MAXIMUM DENSITY USING HEAVY ROLLER COMPACTION.
 2. CONTRACTOR SHALL SET GRADE STAKES MARKING SUBBASE AND FINISH GRADE ELEVATIONS FOR CONSTRUCTION REFERENCE.

TYP. PARKING LOT SECTION NTS



NOTES:
 1. TOOL PAD EDGES TO PROVIDE A UNIFORM RADIUS.
 2. SIDEWALK CONTROL JOINTS AT 4'-0" ON CENTER. PROVIDE 1/4" TO 3/8" EXPANSION JOINTS AT 20'-0" ON CENTER. USE RUBBERIZED BIT. JOINT FILLER.

FRONT SIDEWALK AND DRAINAGE SECTION NTS

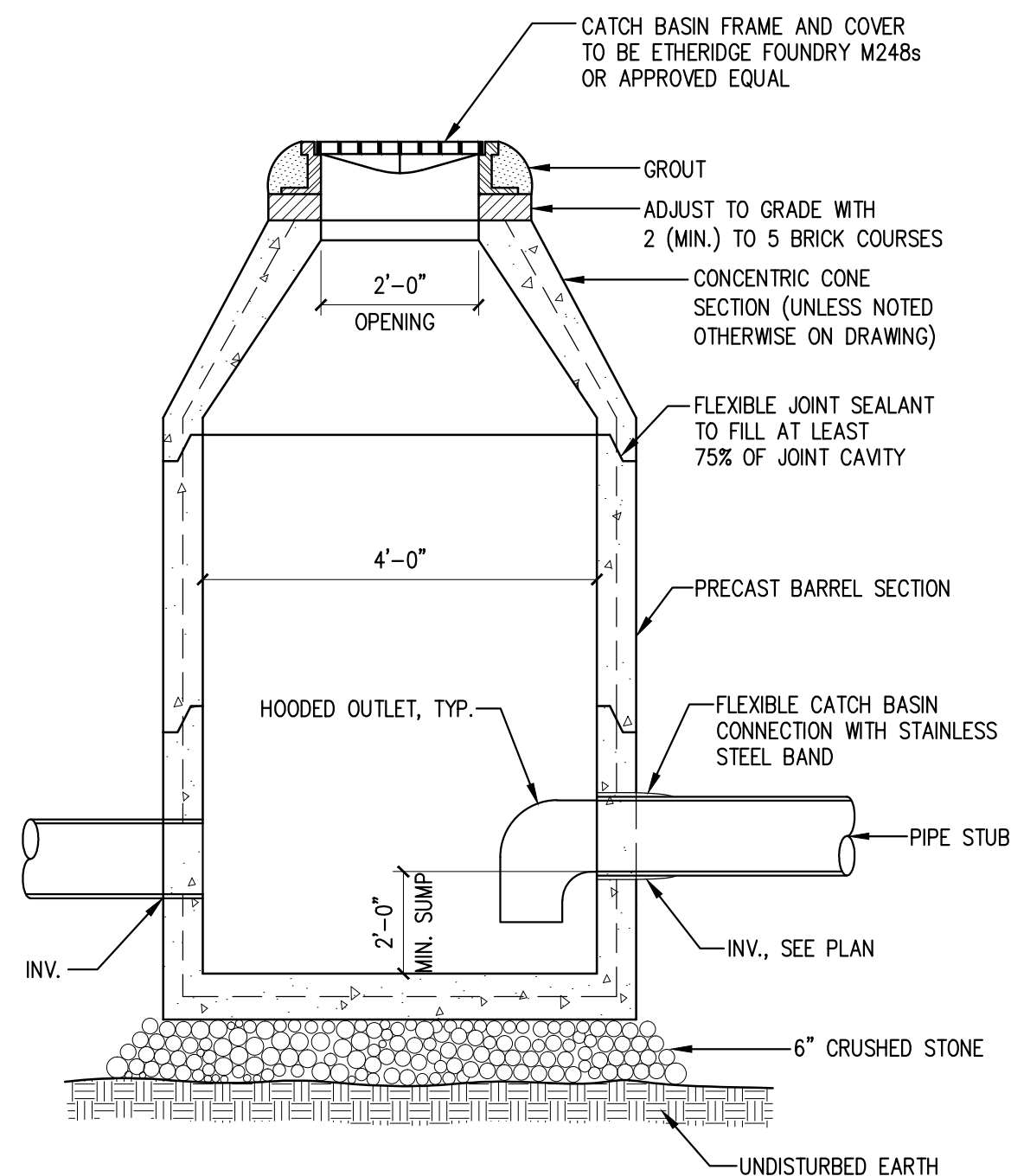


PARKING STALL DETAILS NTS

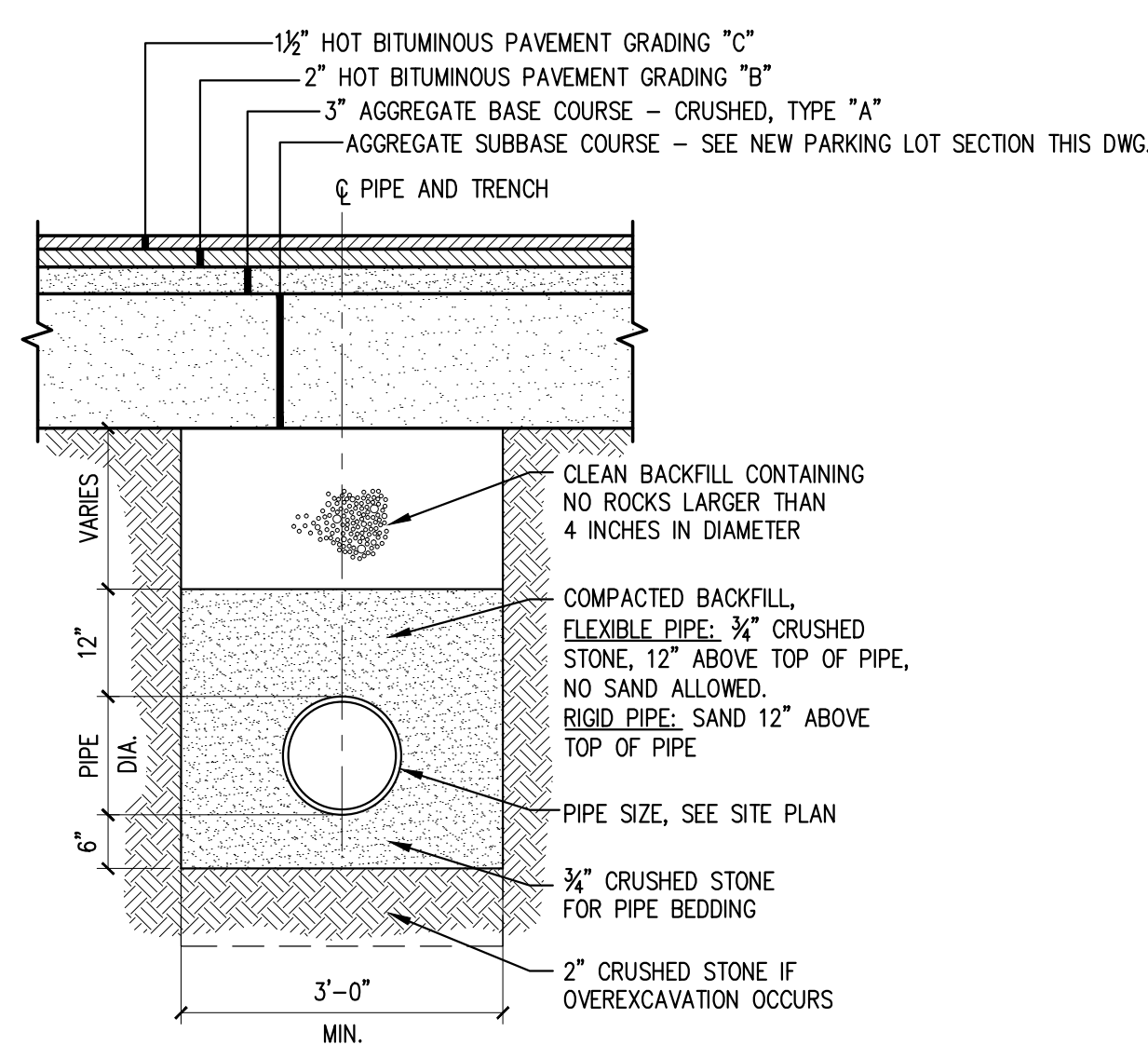
PAINTED PARKING STALL AND PAINTED CROSSWALK DETAILS NTS

GENERAL NOTES FOR MANHOLES AND CATCH BASINS

1. ALL CONCRETE SHALL BE CLASS "A" AND HAVE A MINIMUM ULTIMATE COMPRESSIVE STRENGTH OF 4000 PSI AT THE END OF 28 DAYS, UNLESS OTHERWISE NOTED.
2. PRECAST REINFORCED CONE BARREL MANUFACTURED PER ASTM SPEC. C-478-67
3. ALL NEW AND EXISTING STRUCTURES THAT ARE WORKED ON MUST BE VACUUM TESTED AFTER COMPLETION.
4. ALL MANHOLES SHALL HAVE BITUMINOUS WATERPROOFING APPLIED TO THE EXTERIOR SURFACE.
5. CASTINGS SHALL CONFORM TO ASTM DESIGNATION A48-CLASS 35. ALL PARTS OF CASTINGS, EXCEPT FINISHED SURFACE, SHALL RECEIVE A COAT OF COAL TAR PITCH VARNISH OR ASPHALTUM PAINT WHICH SHALL BE SMOOTH AND TOUGH BUT NOT BRITTLE.
6. MANHOLES SHALL BE CONSTRUCTED OF PRECAST REINFORCED CONCRETE.
7. ALL PRECAST MANHOLES AND CATCH BASINS SHALL BE IDENTIFIED BY STATION AND OFFSET, PAINTED ON THE SIDE OF THE STRUCTURE BY THE MANUFACTURER.
8. STORM AND SEWER MANHOLES SHALL HAVE SOLID COVERS WITH ONE DRILLED PICK HOLE.
9. EXISTING MANHOLES, CATCH BASINS, FRAMES, AND COVERS SHALL BE SALVAGED BY THE CONTRACTOR AND REMAIN THE PROPERTY OF THE CITY.

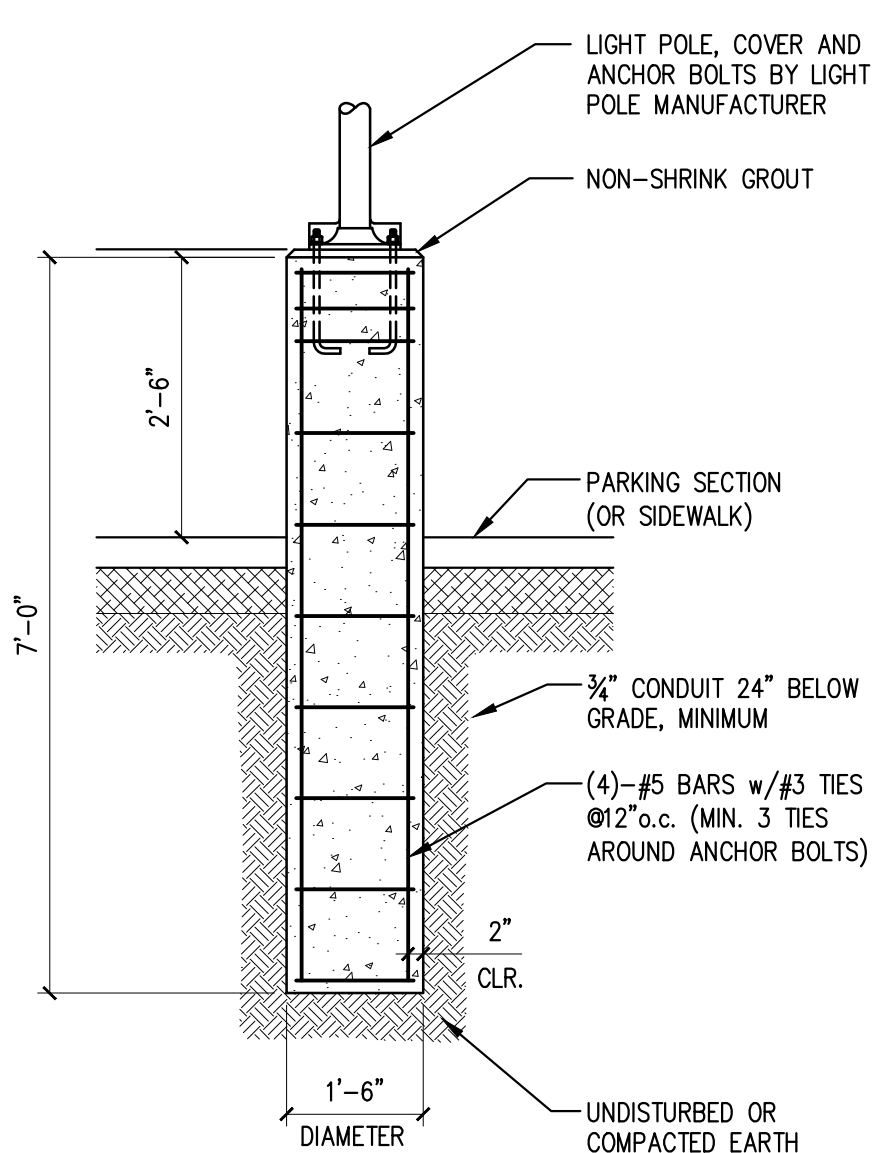


CATCH BASIN DETAIL AND NOTES NTS

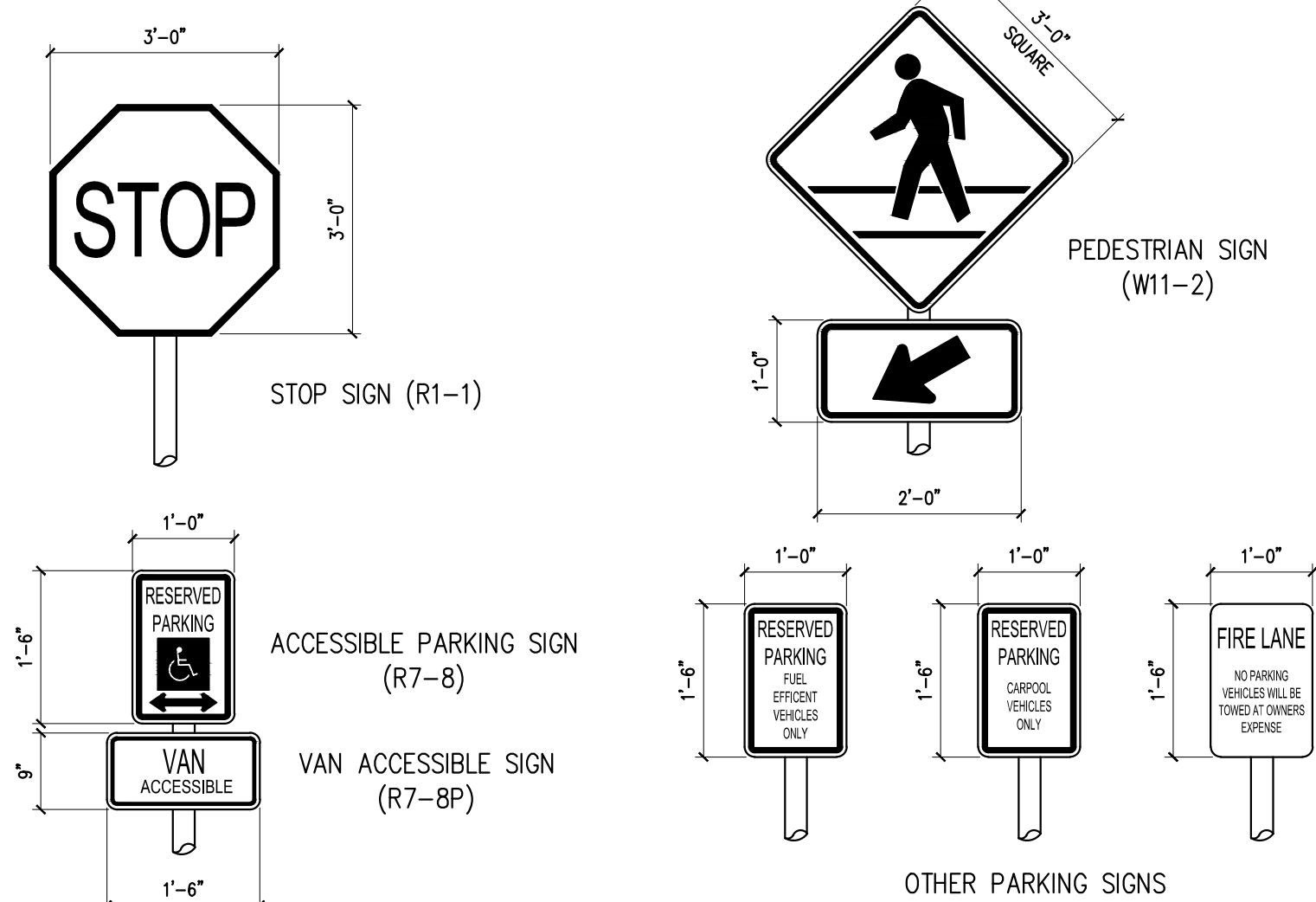


NOTE:
 ANY ALTERNATE TRENCHING OR PAYMENT METHODS SHALL BE APPROVED BY THE CITY.

TYPICAL UNDERGROUND TRENCH DETAIL NTS

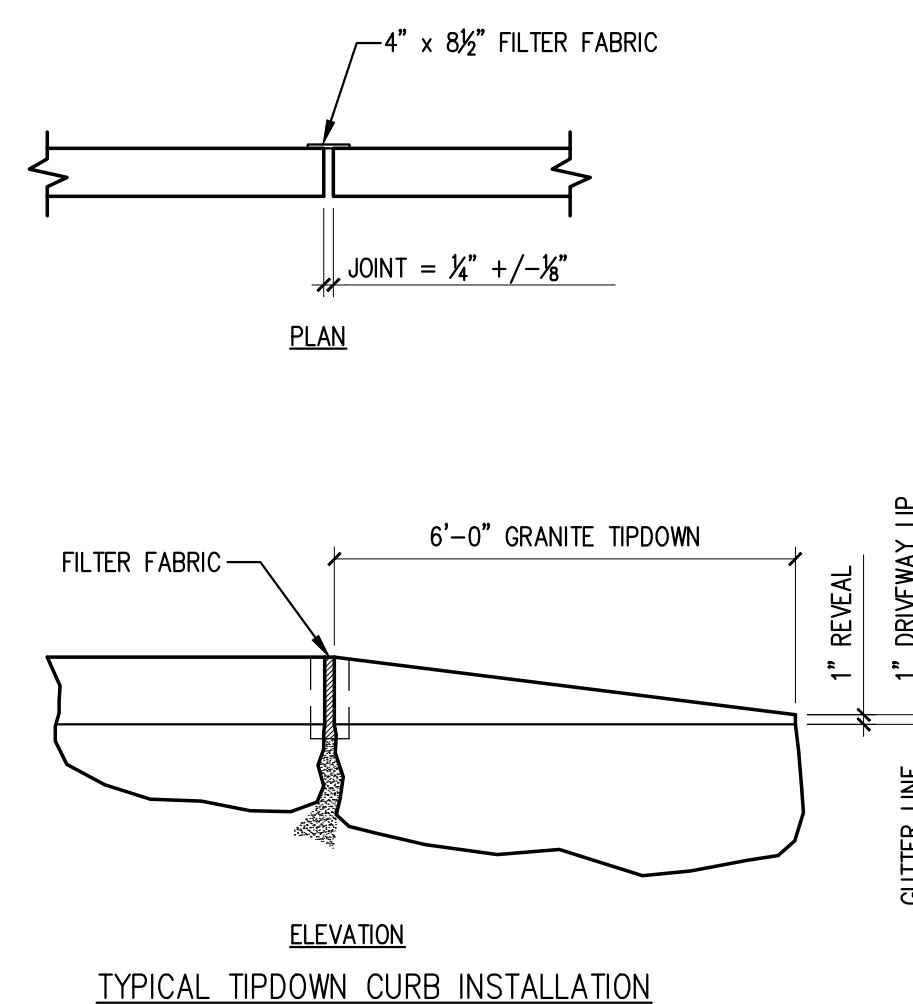


TYPICAL LIGHT POLE BASE DETAIL NTS

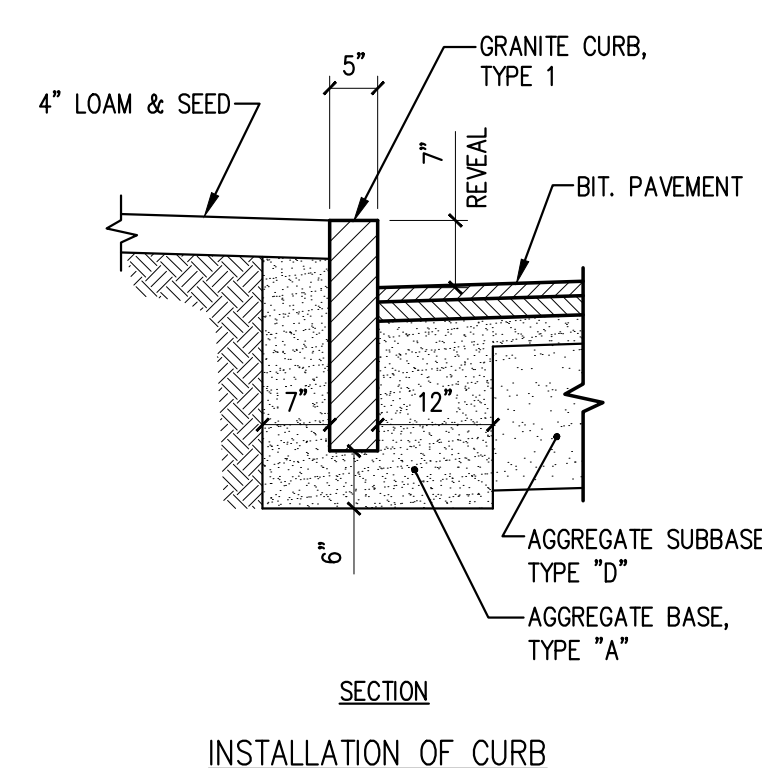


ALL SIGNS SHALL HAVE TYPE III HIGH INTENSITY REFLECTIVE SHEETING ON 0.08" ALUMINUM.
 REFERENCE "STANDARD SPECIFICATIONS FOR CONSTRUCTION OF ROADS AND BRIDGES ON FEDERAL HIGHWAY PROJECTS", FP-96, SECTION 718.01 AND "MANUAL ON UNIFORM TRAFFIC CONTROL DEVICES" 2009 EDITION

SIGNAGE DETAILS NTS



ALTERNATE - GRANITE CURB DETAIL NTS



INSTALLATION OF CURB

CASCO BAY ENGINEERING
 424 Fore Street
 Portland, ME 04101
 Phone 207.842.2800
 Fax 207.842.2828
www.cascobayengineering.com

CLIENT:
WHIPPLE-CALLENDER ARCHITECTS
 136 PLEASANT AVENUE
 PORTLAND, ME 04103

ERIC DUJBE
 No. 12630
 Dube
 REGISTERED PROFESSIONAL ENGINEER

MAINE
 290 CONGRESS STREET
 PORTLAND

NO.	DATE	ISSUE FOR PRICING	FOR CONSTRUCTION
A	6-11-14		
O	7-16-14		

SHEET TITLE:
SITE DETAILS

DESIGNED: ED
 DRAWN: ED
 DATE: 6-4-14
 CADD FILE: 14-030-C200.DWG
 PROJECT NUMBER: 14-030

C200