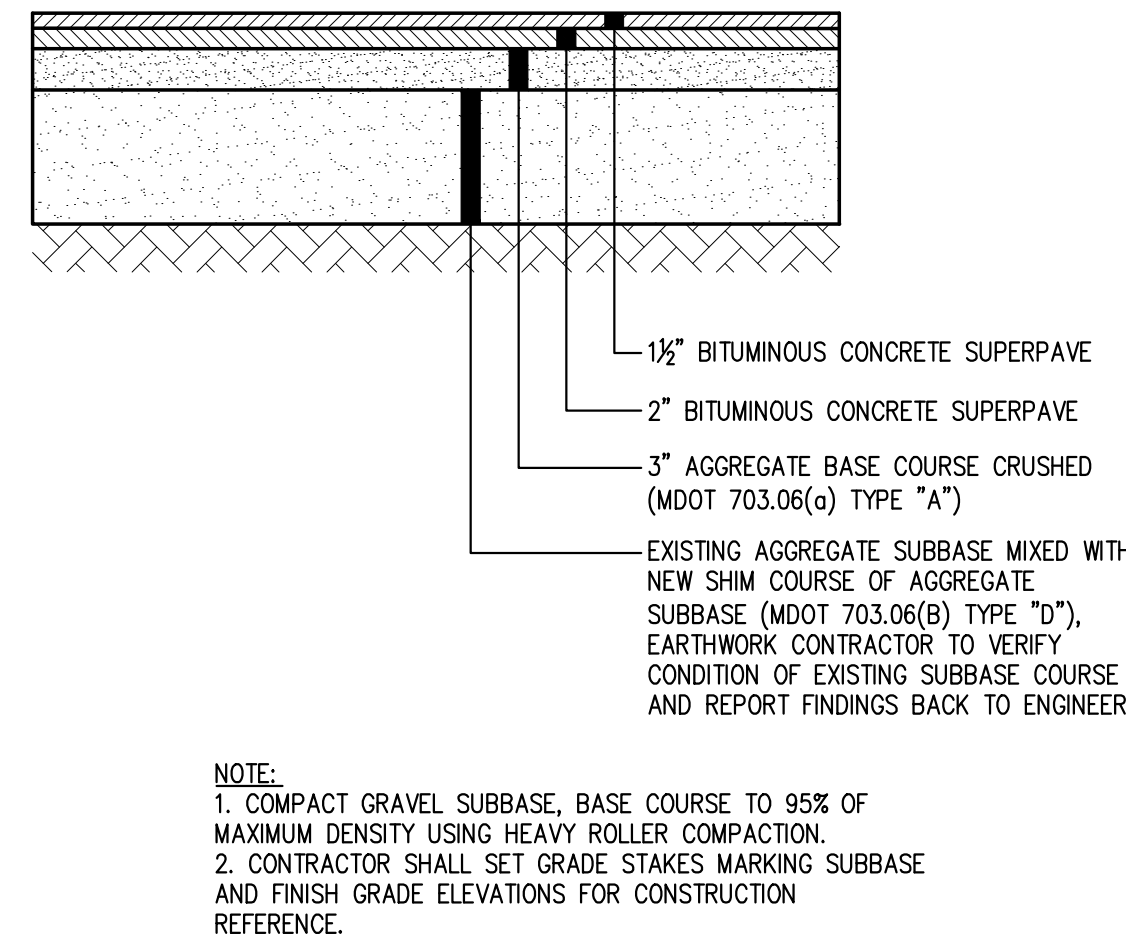
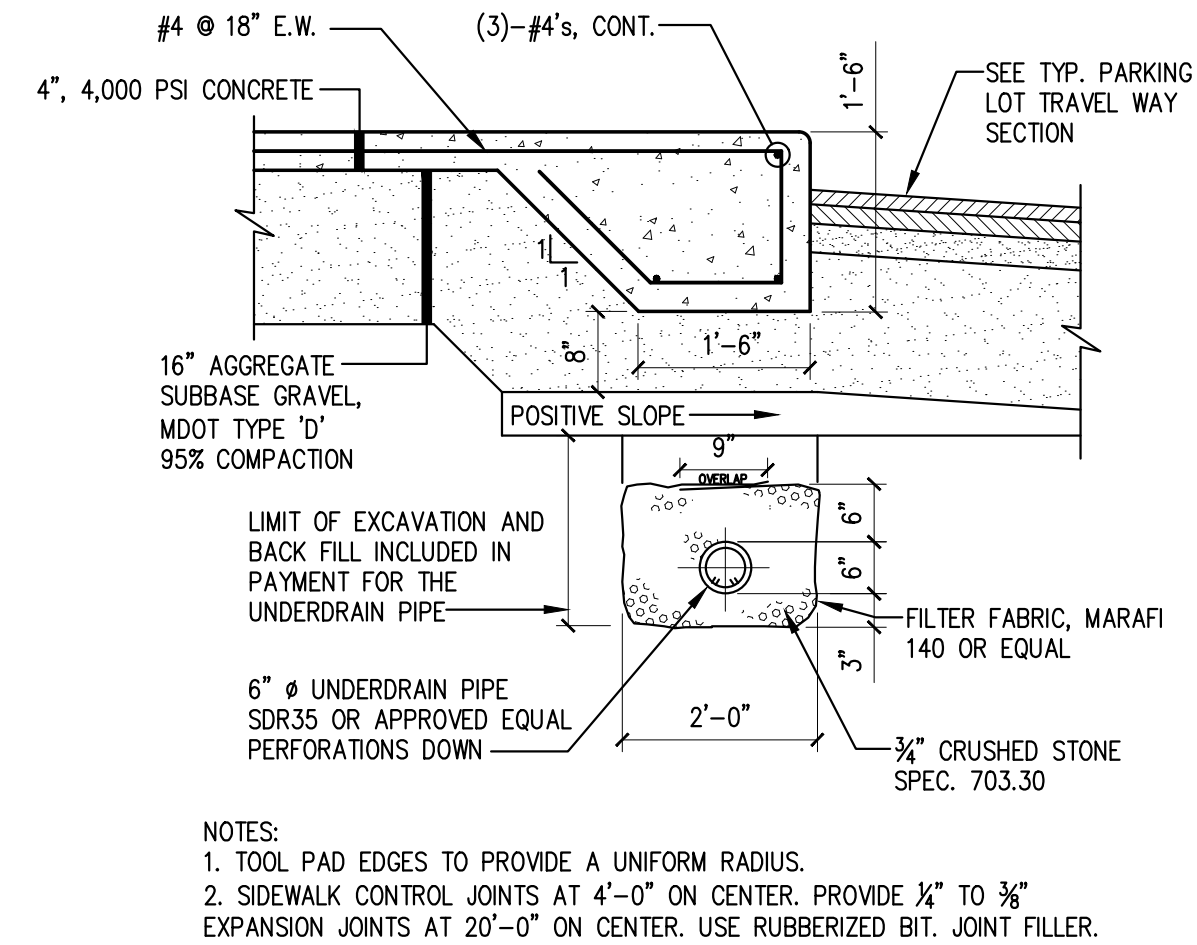


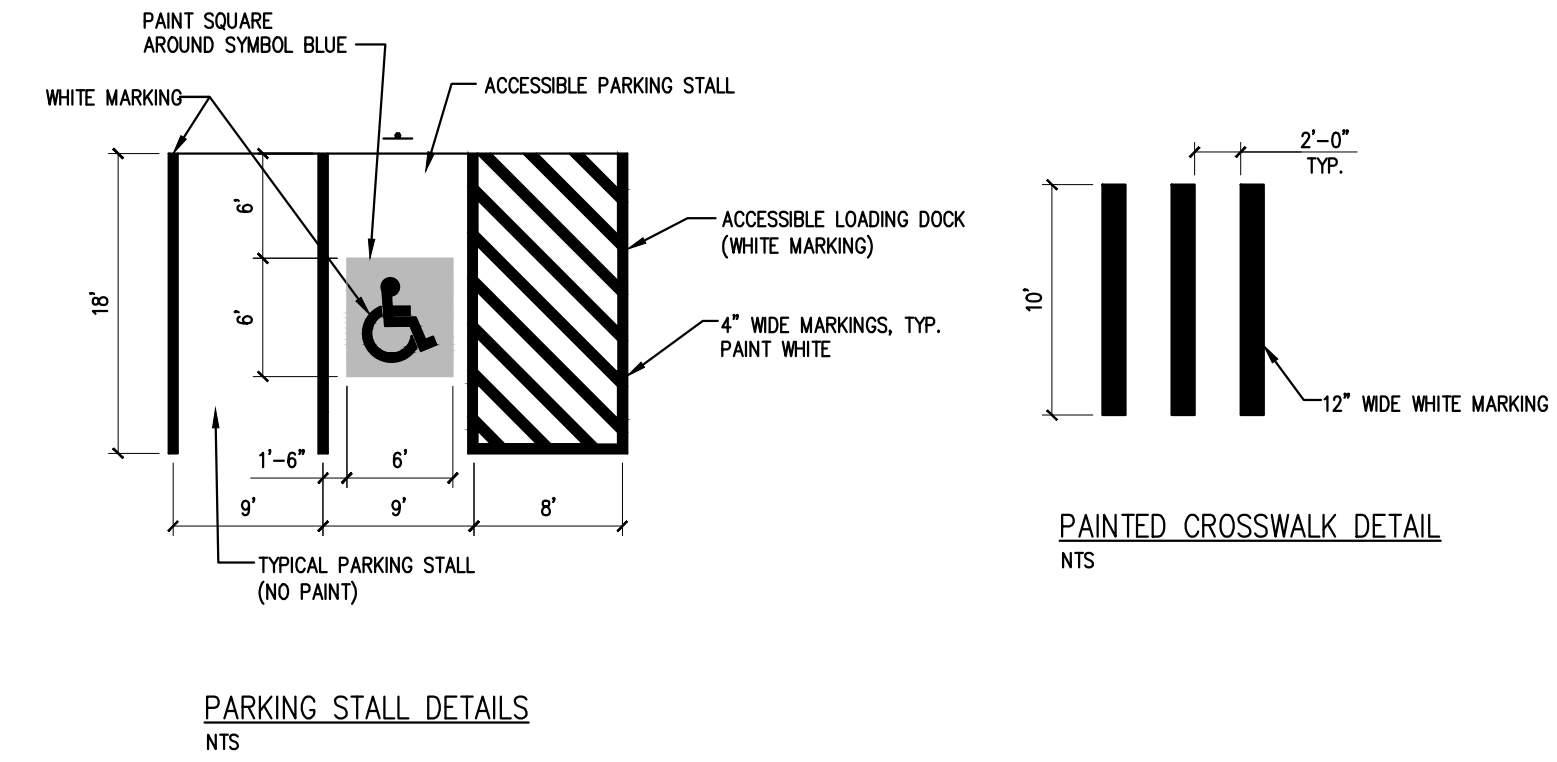
TYP. PARKING LOT TRAVEL WAY SECTION NTS



TYP. PARKING LOT SECTION NTS



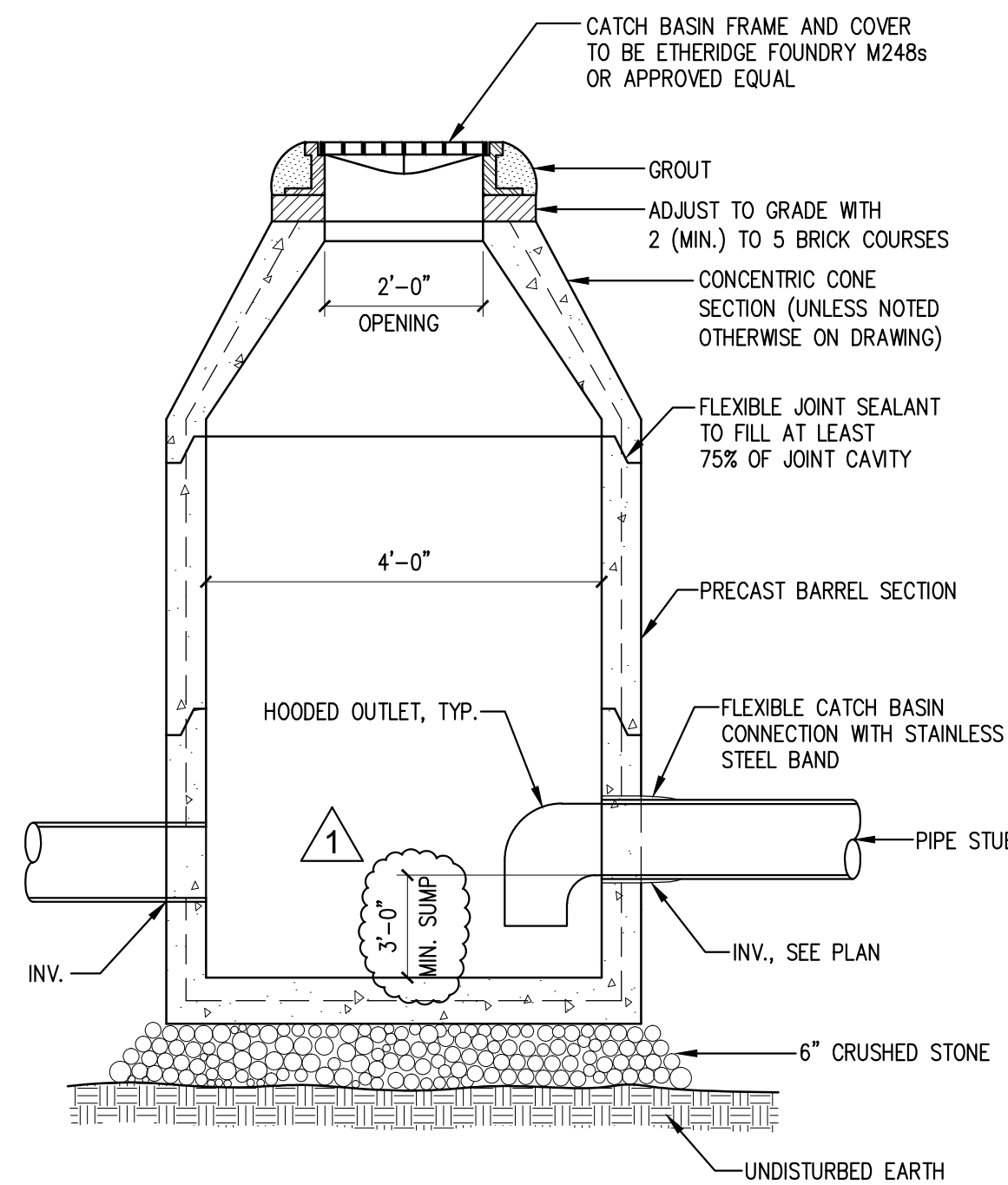
FRONT SIDEWALK AND DRAINAGE SECTION NTS



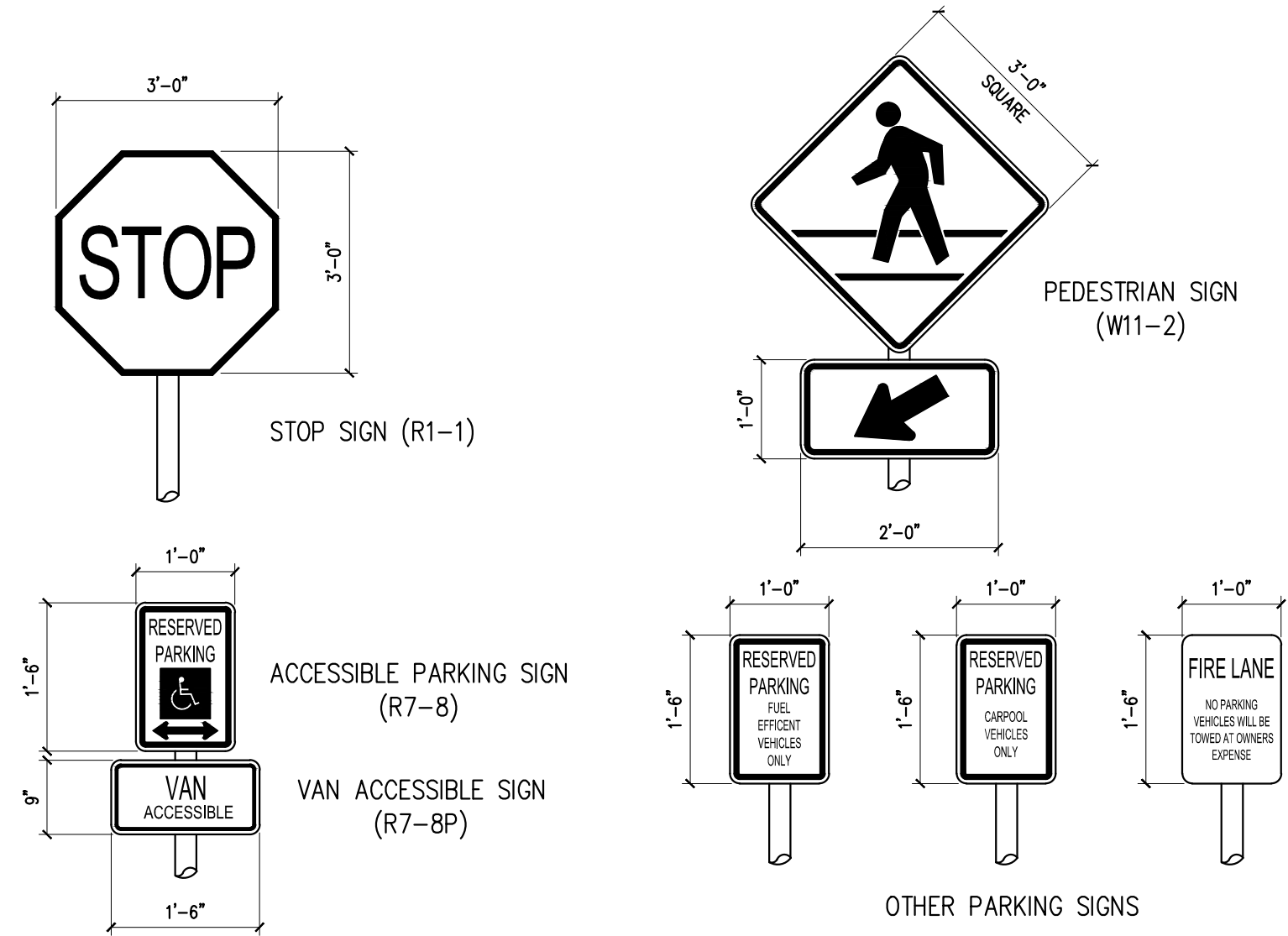
PAINTED PARKING STALL AND PAINTED CROSSWALK DETAILS NTS

GENERAL NOTES FOR MANHOLES AND CATCH BASINS

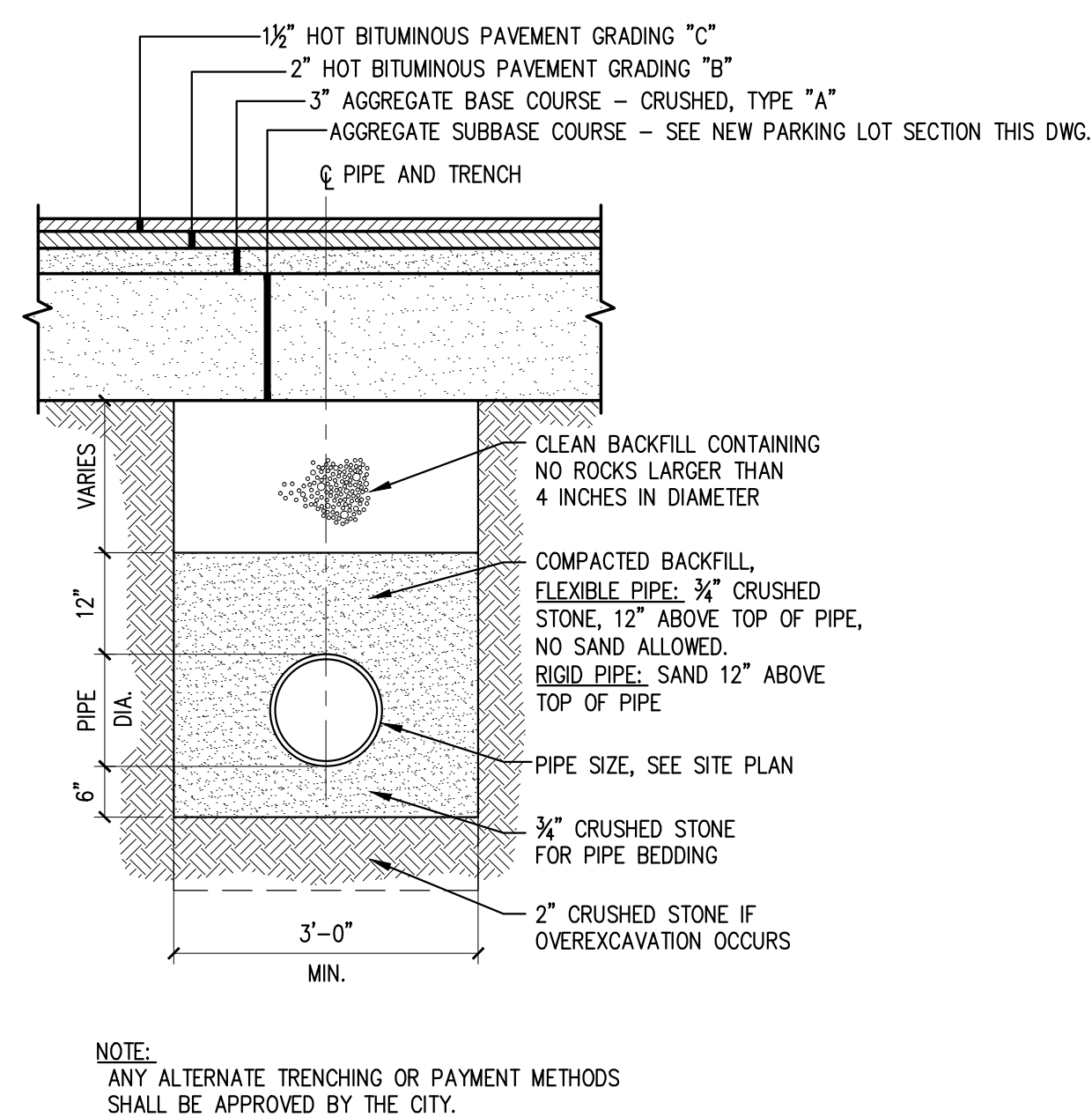
- ALL CONCRETE SHALL BE CLASS "A" AND HAVE A MINIMUM ULTIMATE COMPRESSIVE STRENGTH OF 4000 PSI AT THE END OF 28 DAYS, UNLESS OTHERWISE NOTED.
- PRECAST REINFORCED CONE BARREL MANUFACTURED PER ASTM SPEC. C-478-67
- ALL NEW AND EXISTING STRUCTURES THAT ARE WORKED ON MUST BE VACUUM TESTED AFTER COMPLETION.
- ALL MANHOLES SHALL HAVE BITUMINOUS WATERPROOFING APPLIED TO THE EXTERIOR SURFACE.
- CASTINGS SHALL CONFORM TO ASTM DESIGNATION A48-CLASS 35. ALL PARTS OF CASTINGS, EXCEPT FINISHED SURFACE, SHALL RECEIVE A COAT OF COAL TAR PITCH VARNISH OR ASPHALTUM PAINT WHICH SHALL BE SMOOTH AND TOUGH BUT NOT BRITTLE.
- MANHOLES SHALL BE CONSTRUCTED OF PRECAST REINFORCED CONCRETE.
- ALL PRECAST MANHOLES AND CATCH BASINS SHALL BE IDENTIFIED BY STATION AND OFFSET, PAINTED ON THE SIDE OF THE STRUCTURE BY THE MANUFACTURER.
- STORM AND SEWER MANHOLES SHALL HAVE SOLID COVERS WITH ONE DRILLED PICK HOLE.
- EXISTING MANHOLES, CATCH BASINS, FRAMES, AND COVERS SHALL BE SALVAGED BY THE CONTRACTOR AND REMAIN THE PROPERTY OF THE CITY.



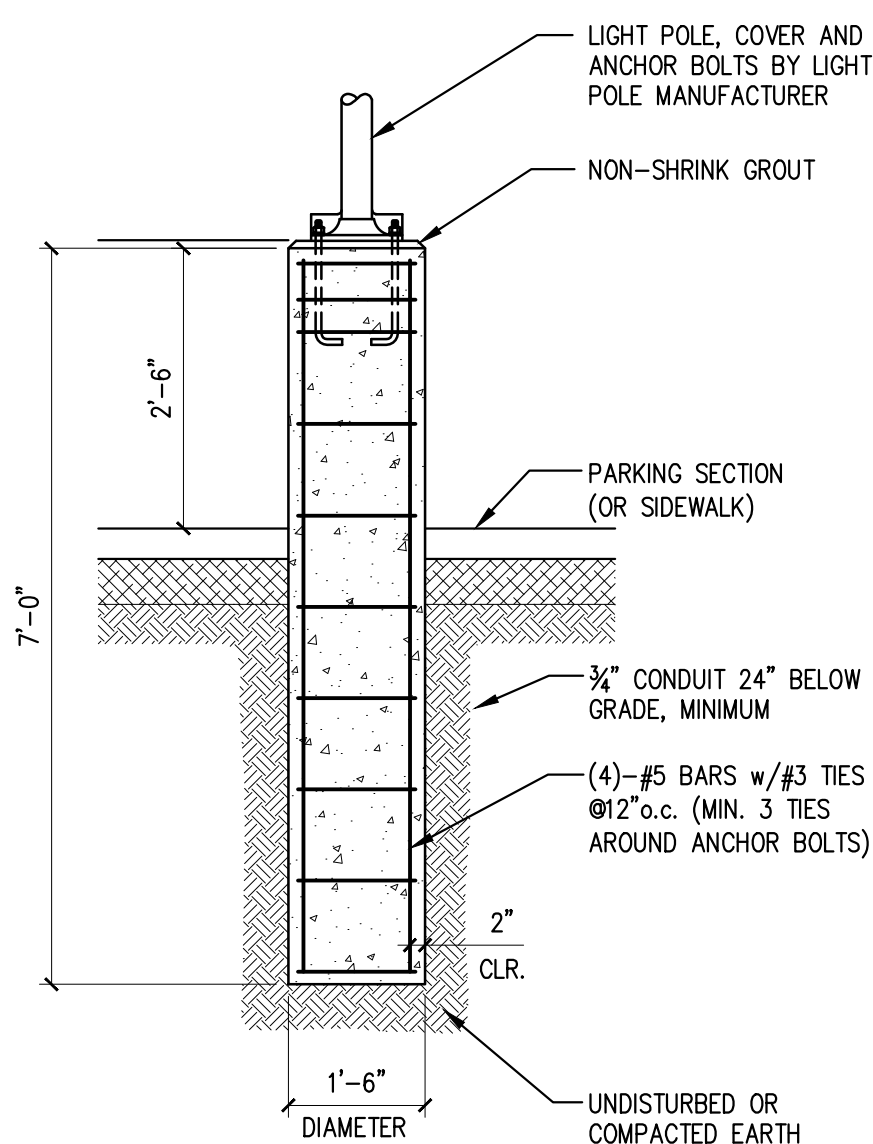
CATCH BASIN DETAIL AND NOTES NTS



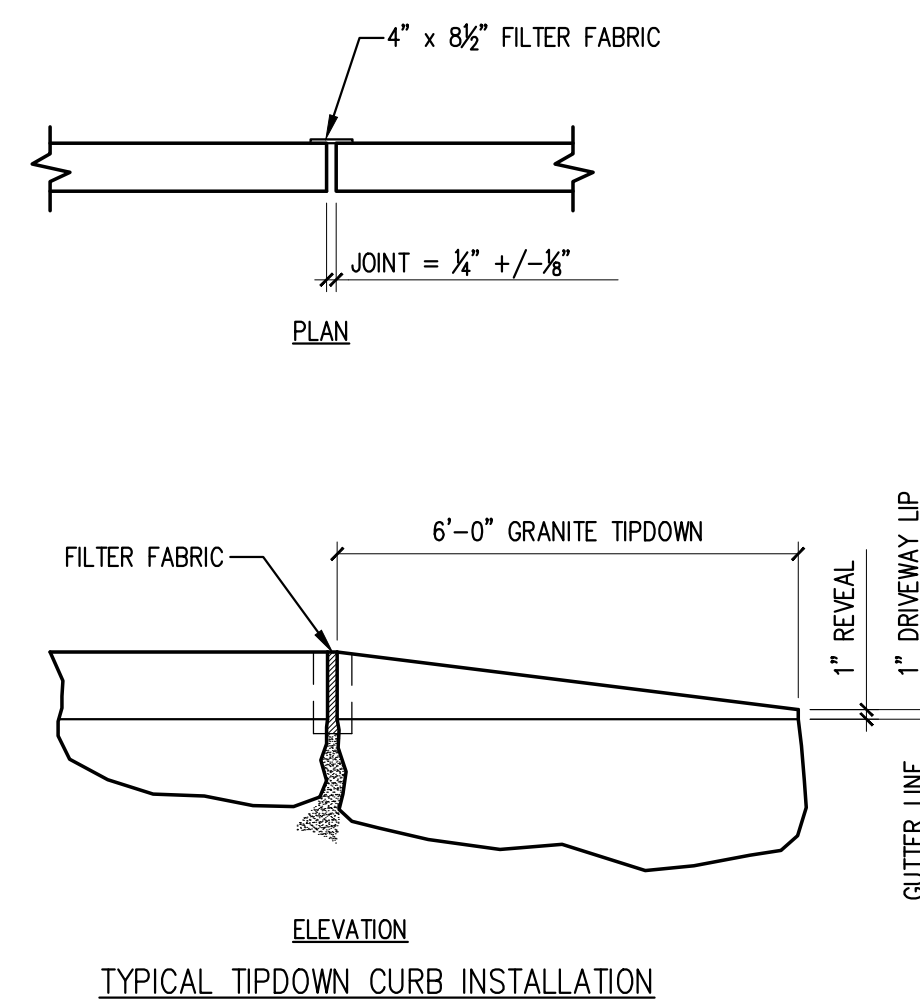
SIGNAGE DETAILS NTS



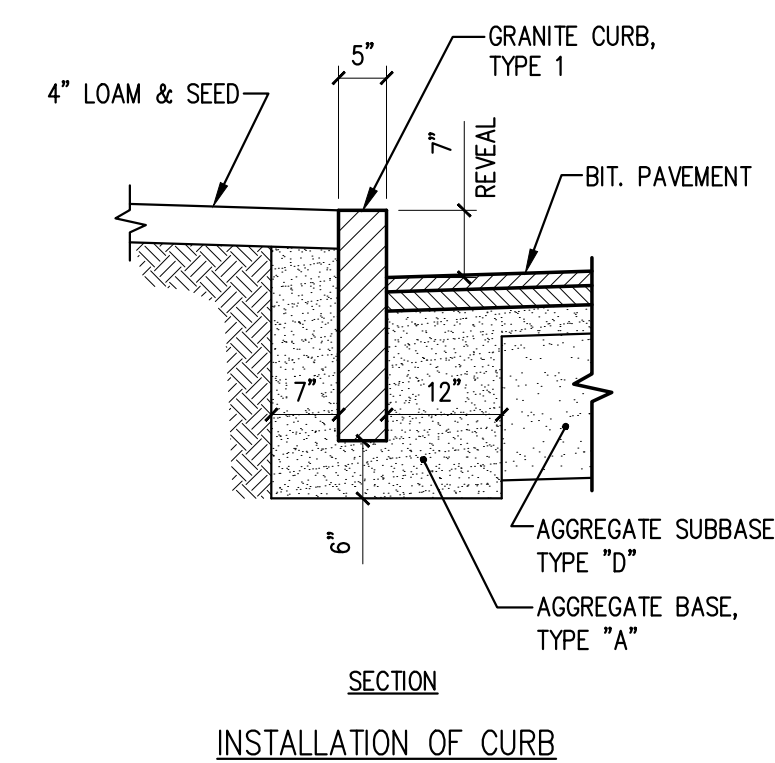
TYPICAL UNDERGROUND TRENCH DETAIL NTS



TYPICAL LIGHT POLE BASE DETAIL NTS



ALTERNATE - GRANITE CURB DETAIL NTS



NTS

CASCO BAY ENGINEERING
 424 Fore Street
 Portland, ME 04101
 Phone 207.842.2800
 Fax 207.842.2828
 www.cascobayengineering.com

CLIENT:
WHIPPLE-CALLENDER ARCHITECTS
 136 PLEASANT AVENUE
 PORTLAND, ME 04103

ERIC DUBO
 No. 12630
 DUBO
 PROFESSIONAL ENGINEER

290 CONGRESS STREET
 PORTLAND
 MAINE

NO.	DATE	ISSUE
1	8-11-14	FOR PRICING
0	7-18-14	FOR CONSTRUCTION
1	7-24-14	REVISED FOR CONSTRUCTION

SHEET TITLE:

SITE DETAILS

DESIGNED:	ED
DRAWN:	ED
DATE:	6-4-14
CADD FILE:	14-030-C200.DWG
PROJECT NUMBER:	14-030

C200