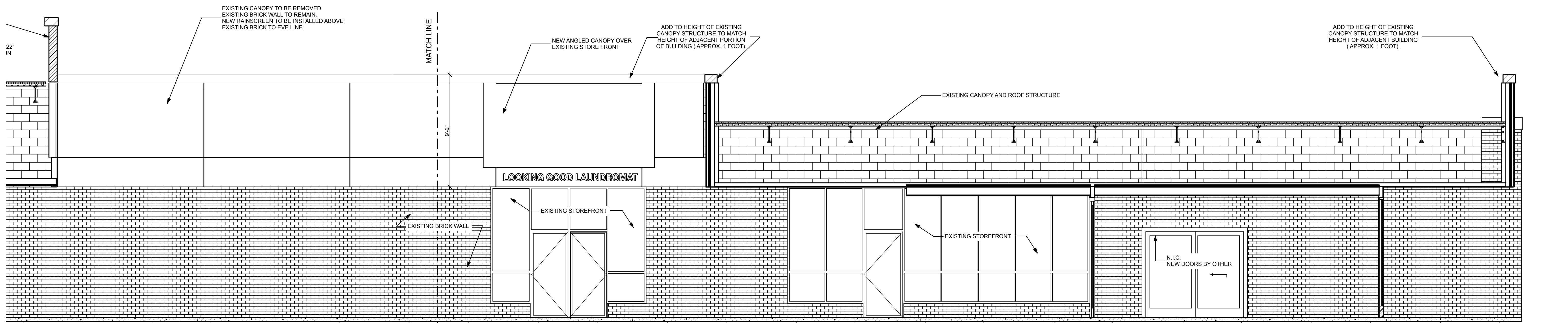
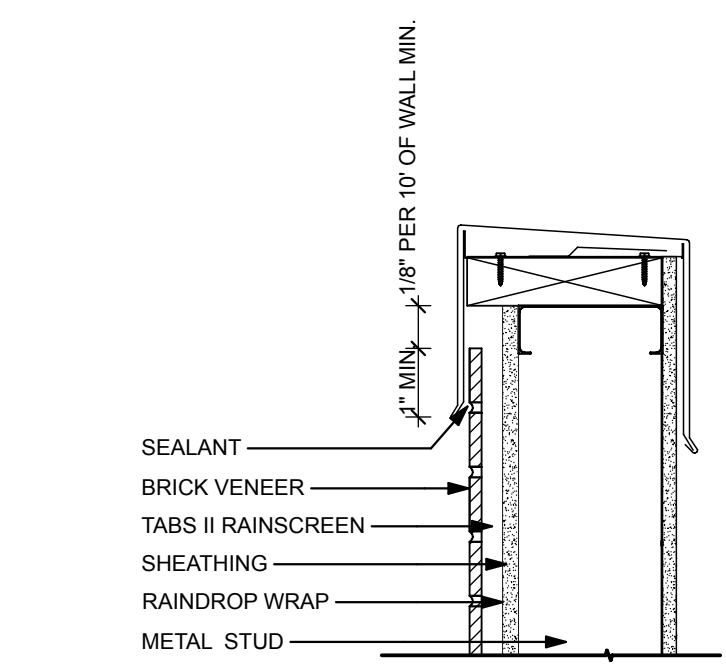


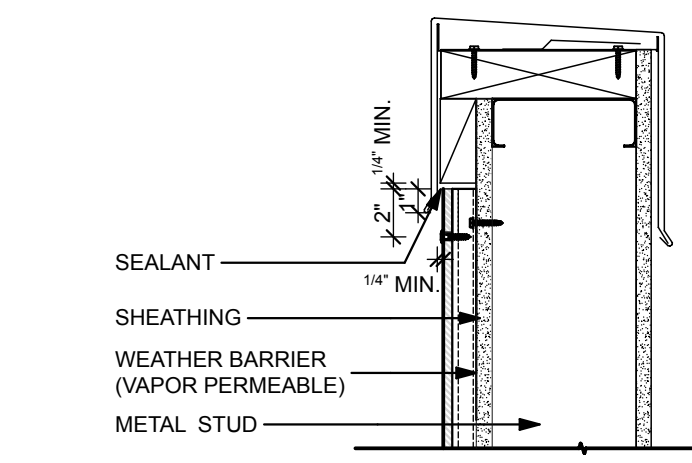
1 SECTION AT LENGTH OF CANOPY
SCALE: 1/4" = 1'-0"



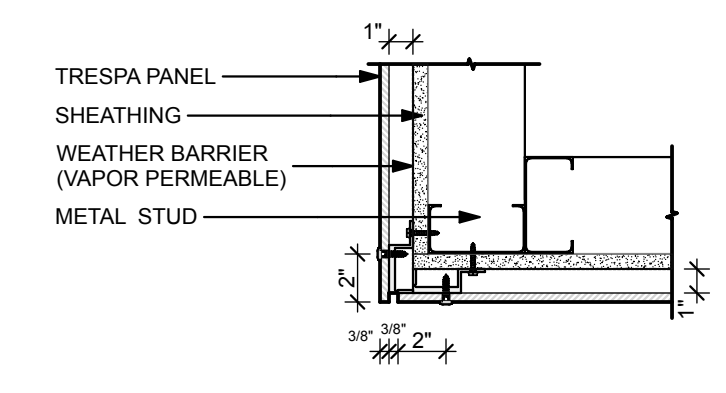
2 SECTION AT LENGTH OF CANOPY
SCALE: 1/4" = 1'-0"



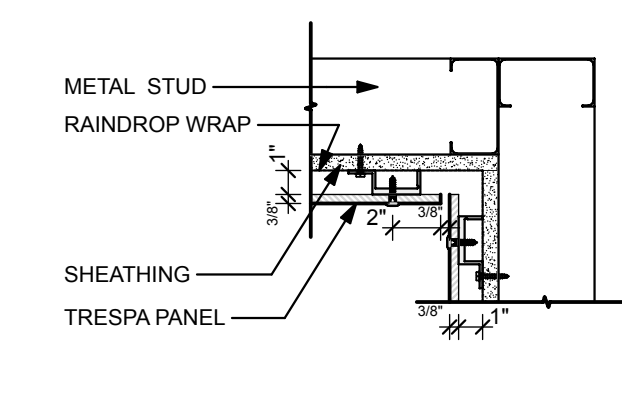
3 BRICK VENEER PARAPET
SCALE: 1 1/2" = 1'-0"



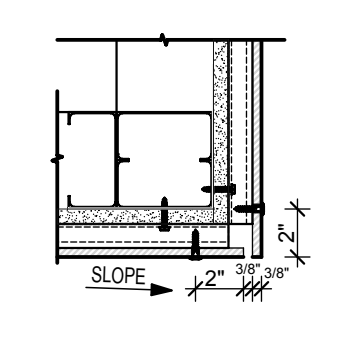
4 TRESPA PARAPET
SCALE: 1 1/2" = 1'-0"



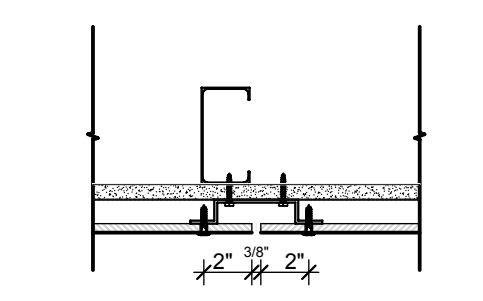
5 TRESPA OUTSIDE CORNER
SCALE: 1 1/2" = 1'-0"



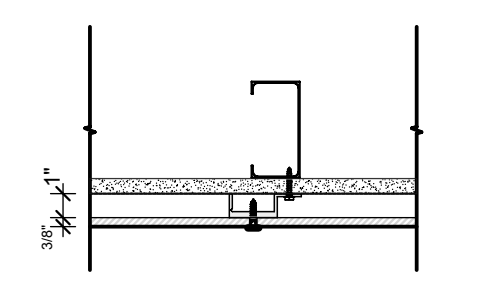
6 TRESPA INSIDE CORNER
SCALE: 1 1/2" = 1'-0"



7 TRESPA SOFFIT
SCALE: 1 1/2" = 1'-0"

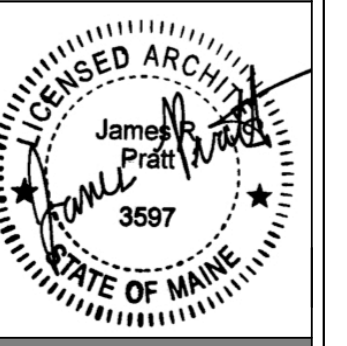


8 TRESPA VERT. PANEL JOINT
SCALE: 1 1/2" = 1'-0"



9 TRESPA VERT. MID PANEL
SCALE: 1 1/2" = 1'-0"

CANOPY RENOVATION
290 CONGRESS STREET
PORTLAND, ME



WHIPPLE | CALLENDER ARCHITECTS
P.O. BOX 1276
PORTLAND, ME 04104
P 207.775.2696
F 207.775.3631
www.whipplecallender.com

DATE	DESCRIPTION
06/05/14	PERMIT AND BIDDING SET

DATE: 06/05/14
CHECKED BY: AEC
DRAWN BY: JRP/AEC
JOB: 14-CPF
SHEET TITLE: CANOPY SECTIONS
TRESPA DETAILS

A3.1